



CRANE MODEL 2200

280 W. 3rd St., Box 169 • Garner, IA 50438 • Phone: 641-923-3741 • Fax: 641-923-2812

UPDATED 08/01/01

TABLE OF CONTENTS

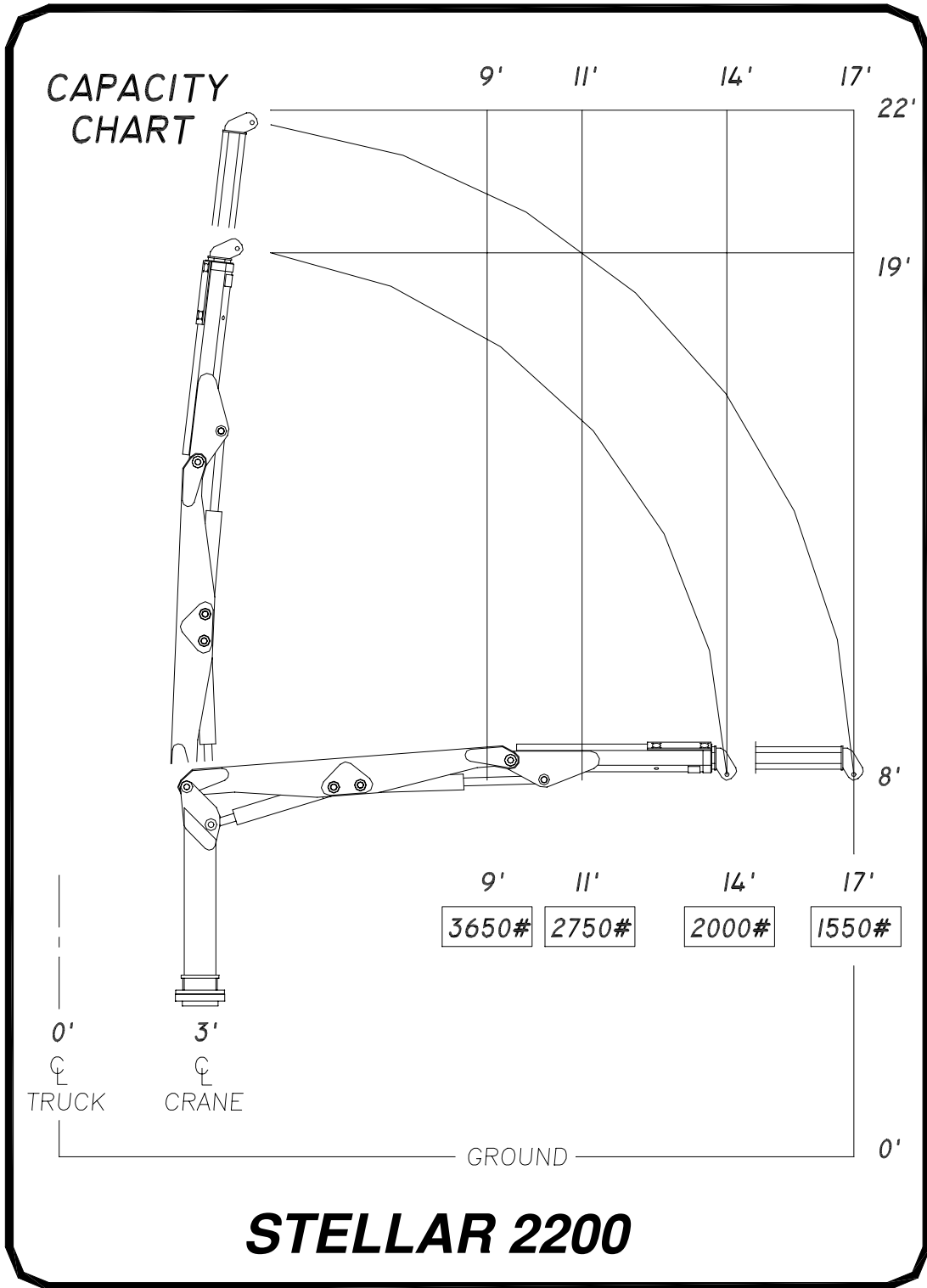
STELLAR CRANE 2200

PAGE	DESCRIPTION
3.)	SPECIFICATION SHEET
4.)	CAPACITY CHART
5.)	CRANE OPERATION
6.)	MANUAL OPERATION
7.)	BASE ASSEMBLY
8.)	MAST ASSEMBLY
9.)	MAIN BOOM ASSEMBLY
10.)	EXTENSION BOOM ASSEMBLY
11.)	CONTROL KIT
12.)	HYDRAULIC KIT
13.)	INSTALLATION KIT
14.)	DECAL KIT
15.)	WARRANTY

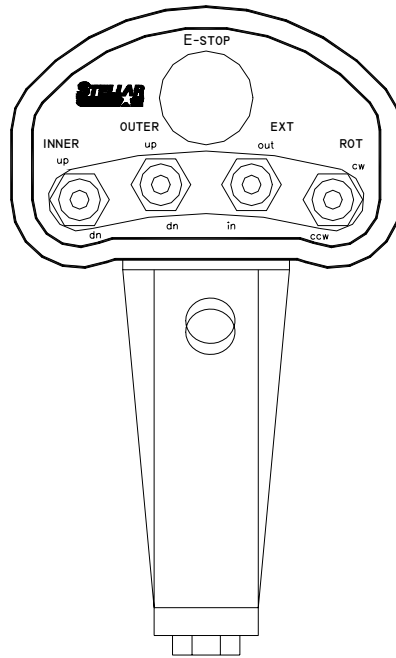
SPECIFICATION SHEET

Crane Rating	22,000 foot/pounds
Standard Boom Length	11 foot-from CL of Crane 14 foot-from CL of Truck
Boom Extension	Hydraulic 32 inches
Maximum Horizontal Reach	14 foot-from CL of Crane 17 foot-from CL of Truck
Maximum Vertical Lift (from truck frame)	19 foot
Inner Lift Cylinder	3 ½ inch bore with integral pilot operated counterbalance valves.
Outer Lift Cylinder	3 ½ inch bore with integral pilot operated counterbalance valves.
Extension Cylinder	2 ½ inch bore with integral pilot operated counterbalance valves.
Rotation	320 degree power (hourglass worm gear)
Lifting Capacities	3,650 pounds @ 9 foot 2,750 pounds @ 11 foot 2,000 pounds @ 14 foot 1,150 pounds @ 17 foot
Power Supply Required	PTO & Pump (4 gpm @ 2800 psi)
Controls	Proportional Radio Control Standard.
Stowed Height (above truck frame)	65 inches
Mounting Space Required	24 inches
Approximate Shipping Weight	1350 pounds

CAPACITY CHART



CRANE OPERATION



CRANE OPERATION

THIS CRANE IS OPERATED BY A RADIO CONTROL SYSTEM WHICH OPERATES AN ELECTRONIC VALVE BANK. THE CONTROLLER (AS SHOWN) OPERATES THE FOLLOWING FUNCTIONS:

- INNER BOOM UP & DOWN
- OUTER BOOM UP & DOWN
- EXTENSION BOOM IN & OUT
- ROTATION CW & CCW

TO OPERATE THE CRANE ACTIVATE THE DESIRED TOGGLE SWITCH. THE CRANE WILL NOT FUNCTION UNTIL THE TRIGGER ON THE REMOTE HANDLE IS ACTIVATED. THE CRANE SPEED WILL CHANGE AS THE TRIGGER IS PULLED OR RELEASED.

NOTE: IF THE CRANE DOES NOT OPERATE CHECK THE BATTERIES LOCATED IN THE REMOTE HANDLE AND REPLACE IF NECESSARY.

MANUAL OPERATION

IN CASE OF RADIO FAILURE THE CRANE CAN BE OPERATED USING THE MANUAL OVERRIDES LOCATED ON THE VALVE BANK. USE THE MANUAL OVERRIDES **ONLY** TO GET THE CRANE INTO A STOWED POSITION FOR TRAVEL. HAVE THE EQUIPMENT SERVICED FOR NORMAL RADIO USE.

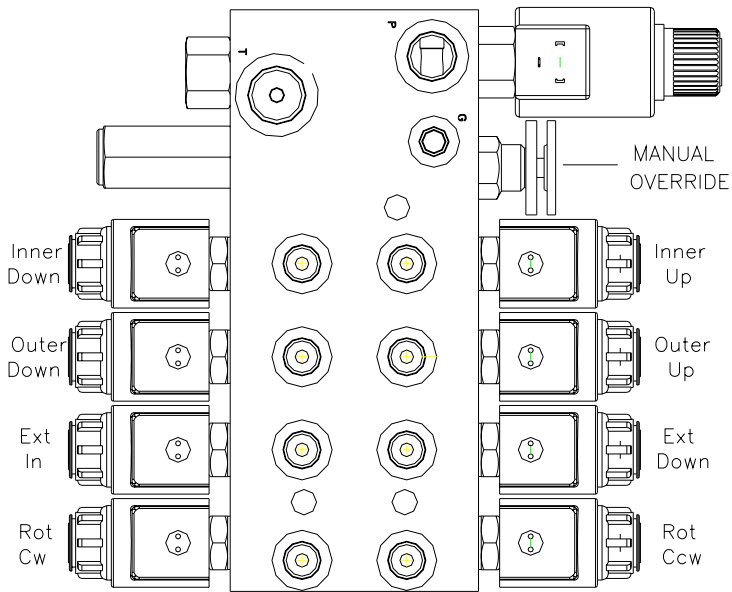
WARNING

PROLONGED MANUAL OPERATION WILL CAUSE SEVERE DAMAGE TO THE HYDRAULIC SYSTEM.

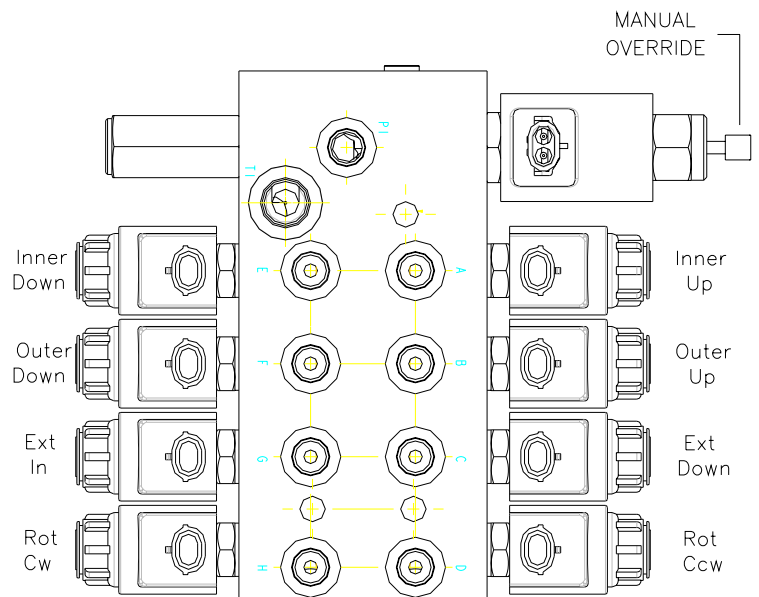
TO OPERATE CRANE MANUALLY:

- 1.)ACTIVATE MANUAL OVERRIDE VALVE BY TURNING STEM.
- 2.)OPERATE FUNCTIONS AS NEEDED TO STOW CRANE BY PUSHING ON THE END OF THE SOLENOID.
- 3.)RESTORE MANUAL OVERRIDE VALVE TO ORIGINAL POSITION.
- 4.)HAVE UNIT SERVICED.

Prior to 8/01/01



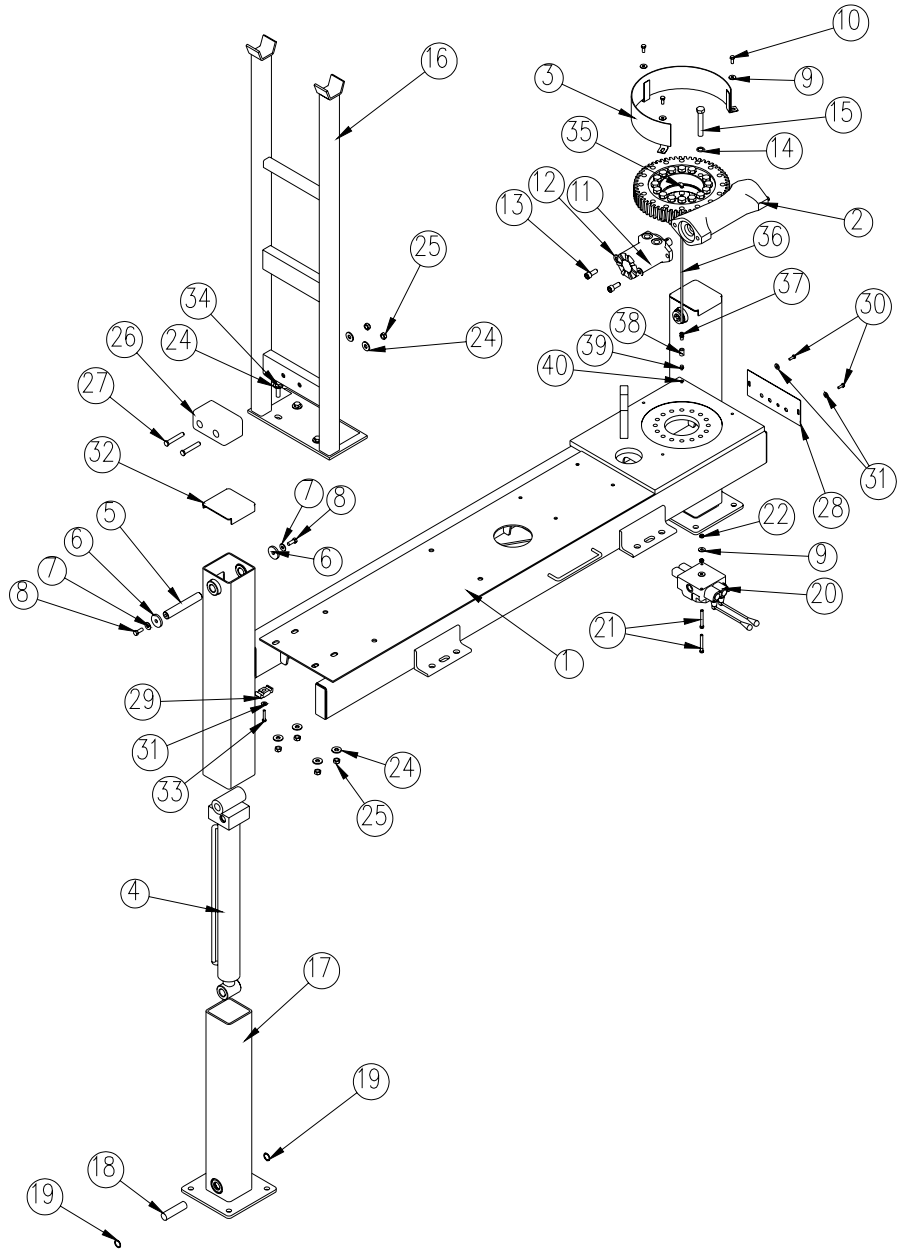
As of 8/01/01



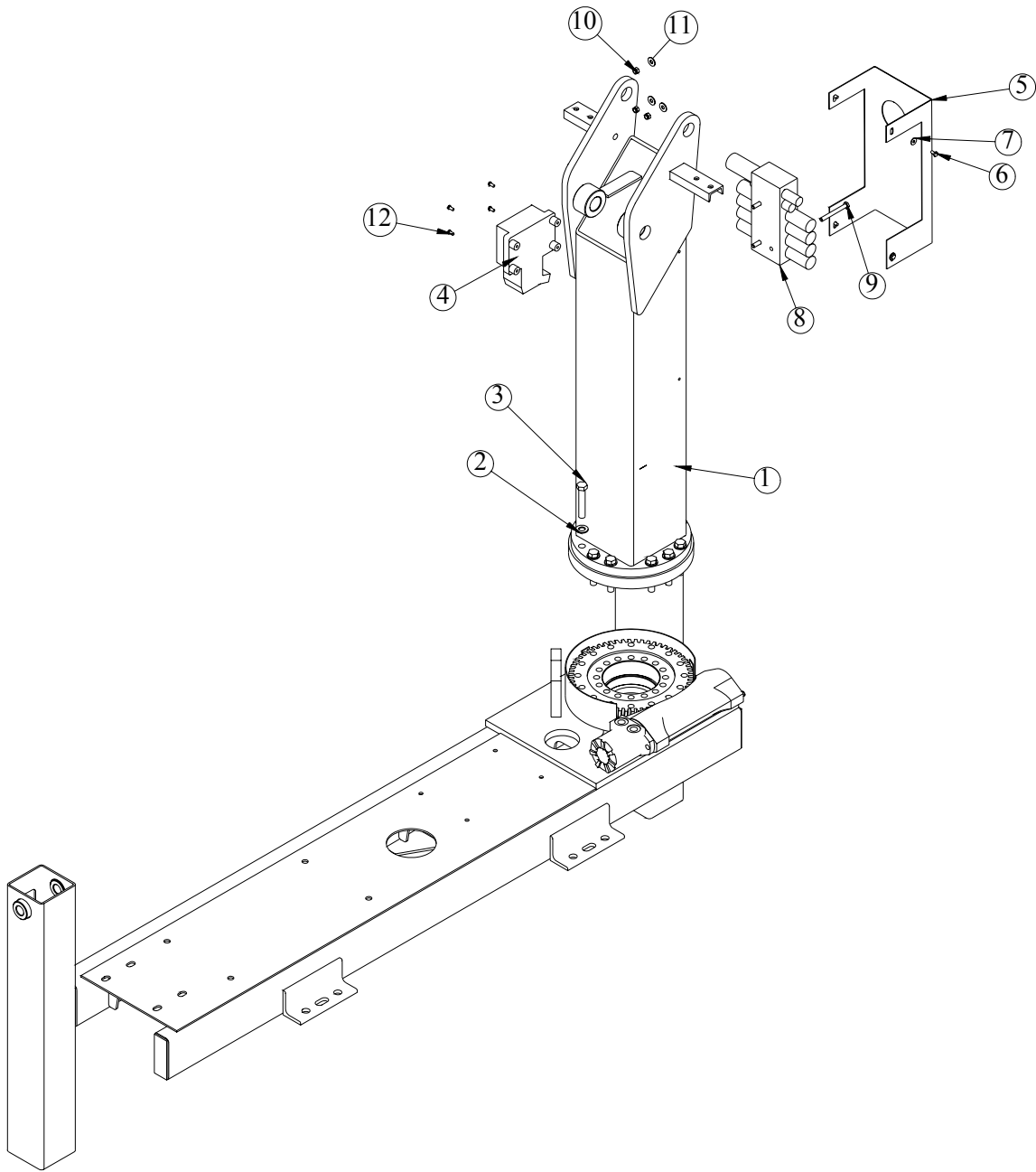
BASE ASSEMBLY

P/N 18032

ITEM NO.	PART NO.	DESCRIPTION	QTY.
1	10903	BASE 2200	1
2	9781	BEARING SWING DRIVE 2200 ROTATOR	1
3	10668	GEAR GUARD WELDMENT 2200	1
4	3783	CYLINDER 2.00X18.75	2
5	11688	PIN 1.00X6.25D&T	2
6	9320	PIN CAP 0.44X1.75X0.25 SS	4
7	C6353	WASHER 0.38 FLAT GR8	4
8	0351	CAP SCR 0.38-16X1.00 HHGR5	4
9	0343	WASHER 0.31 FLAT	5
10	0420	CAP SCR 0.31-18X0.75 HHGR5	3
11	C6069	MOTOR HYD ROSS MK080613AAAB	1
12	D0790	WASHER 0.50 FLAT GR8	2
13	D1307	CAP SCR 0.50-13X1.25 SH	2
14	12152	WASHER 0.63 FLAT SP	16
15	11692	CAP SCR 0.63-11X3.75 HHGR8	16
16	12648	SADDLE, 2200 NON ADJUSTABLE	1
17	12987	OUTRIGGER 2200	2
18	D0977	PIN 1.00X3.75	2
19	3875	SNAP RING 1.00 INTERNAL	4
20	10974	VB 2 SECT W/PB BM40/2-FU-MOA1X2	1
21	0489	CAP SCR 0.31-18X2.50 HHGR5	2
22	0342	NUT 0.31-18 HH NYLOC	2
24	0352	WASHER 0.50 USS FLAT ZINC	10
25	C6106	NUT 0.50-13 HHGR5 NYLOC	6
26	3945	BUMPER DOCK 3X3.38X6	1
27	0504	CAP SCR 0.50-13X3.00 HHGR5	2
28	12703	PLATE SWITCH MTG 2200	1
29	8622	CLAMP HOSE/TUBE AG-2	2
30	0479	CAP SCR 0.25-20X0.75 HHGR5	2
31	0340	WASHER 0.25 FLAT	4
32	19248	OUTRIGGER CAP ASM	2
33	0220	CAP SCR 0.25-20 X 1.50 HHGR5	2
34	0500	CAP SCR 0.50-13X1.75 HHGR5	4
35	D0240	FTG ELL 0.13 CPRSN TUBE TO NPT	1
36	D1810	TBE AIR SAEJ844 TYPE A .25	1
37	D1345	FTG CPRSN 0.12NPT/0.25 TUBE	1
38	C2256	FTG COUPLER PIPE 0.13	1
39	c1592	ZERK 1/8 NPT STRAIGHT	1
40	C4808	CAP PLASTIC (RED)	1

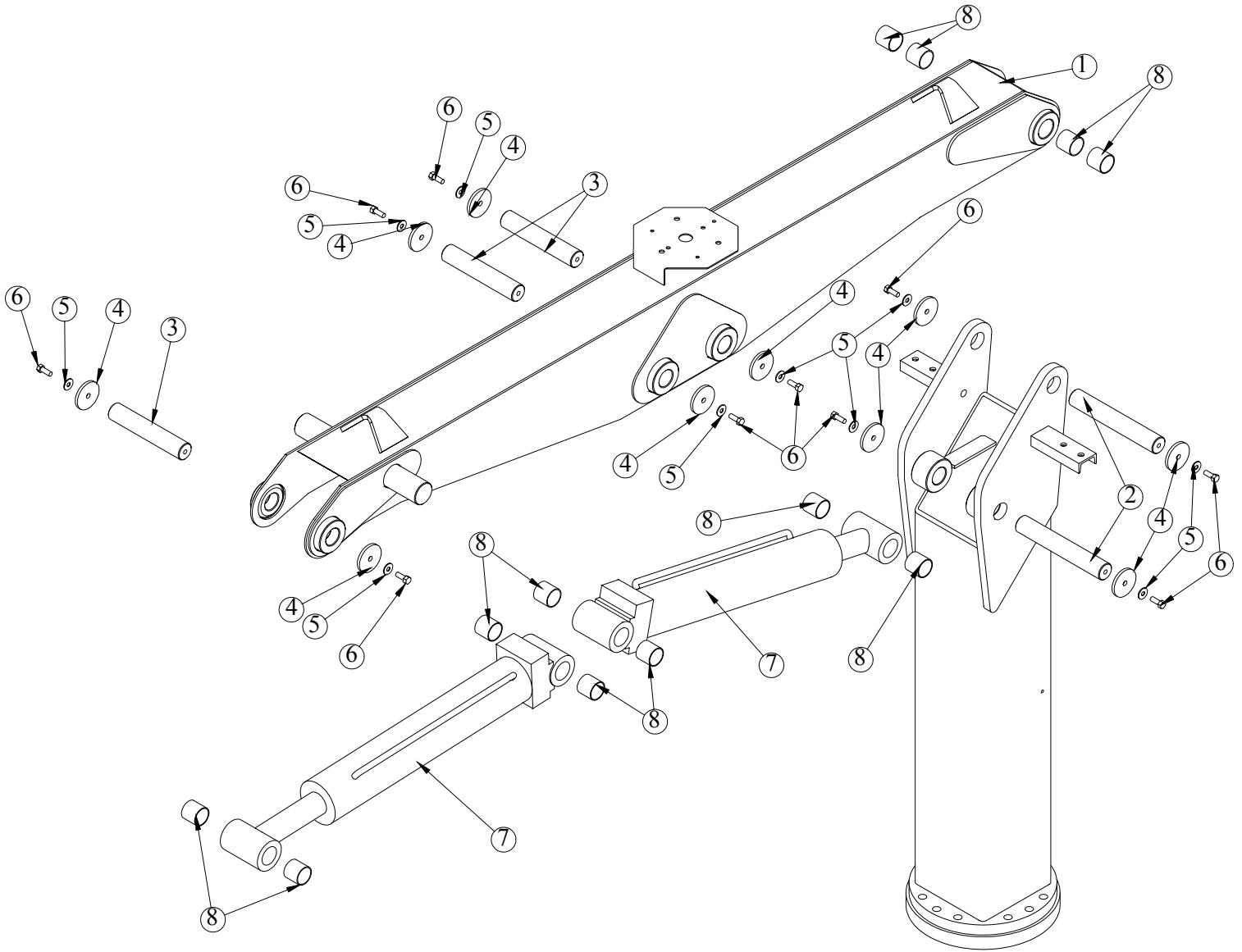


MAST ASSEMBLY P/N 18033



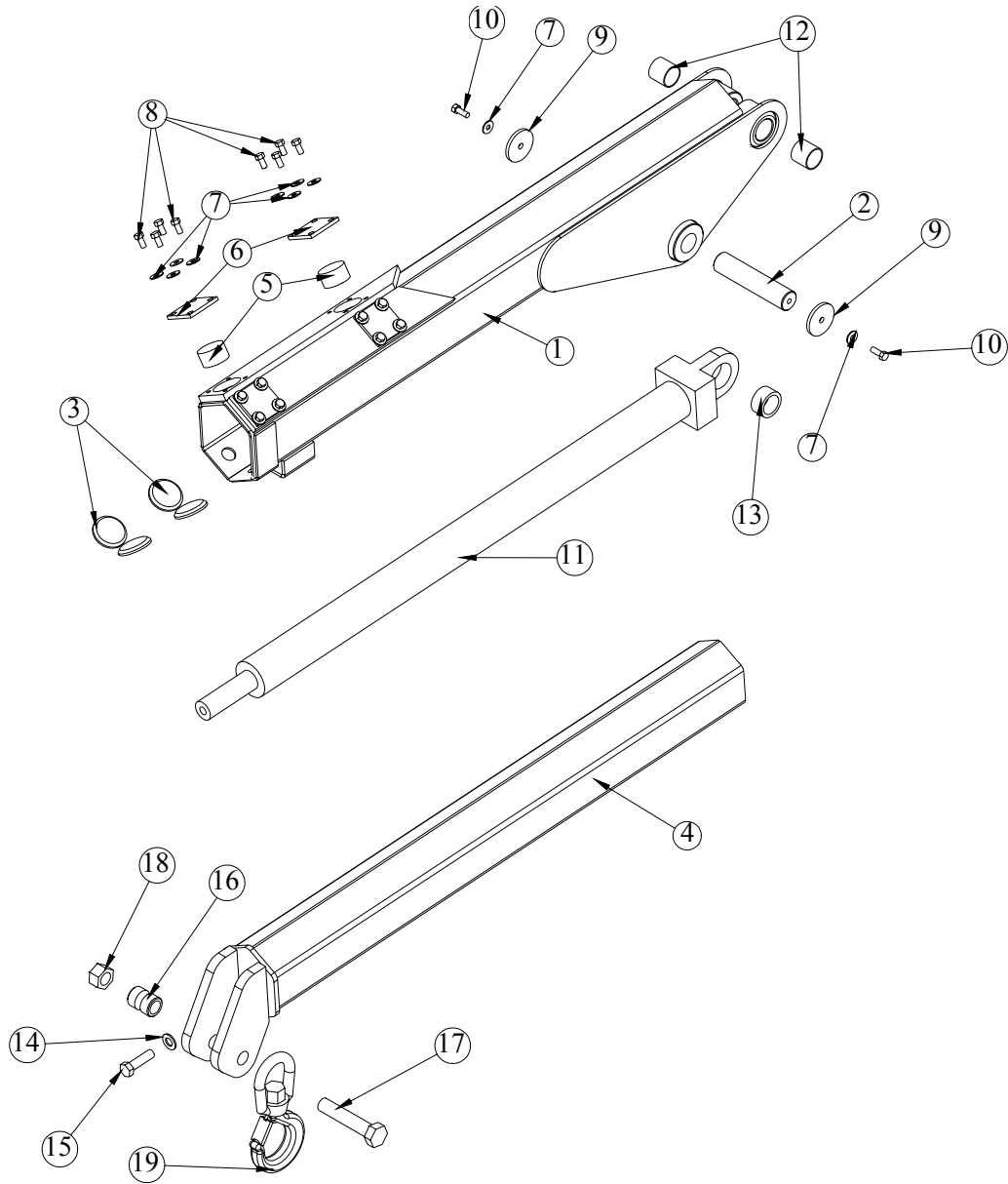
ITEM NO.	PART NO.	DESCRIPTION	QTY.
1	10533	MAST 2200	1
2	C5902	WASHER 0.63 FLAT GR8	12
3	D1312	CAP SCR 0.63-11X3.50 HHGR8	12
4	11847	RADIO RECEIVER	1
5	12710	GUARD VB 2200	1
6	0478	CAP SCR 0.25-20X0.50 HHGR5	4
7	D0917	WASHER 0.25 FLAT SS	4
8	12810	VB 4 SECT ELECT W/PROP VLV HYDAK	1
9	0531	CAP SCR 0.38-16X3.50 HHGR5	3
10	0347	NUT 0.38-16 HH NYLOC	3
11	0346	WASHER 0.38 FLAT	3
12	10976	CAP SCR 6MMX12MM HHGR8	4

MAIN BOOM ASSEMBLY P/N 18034



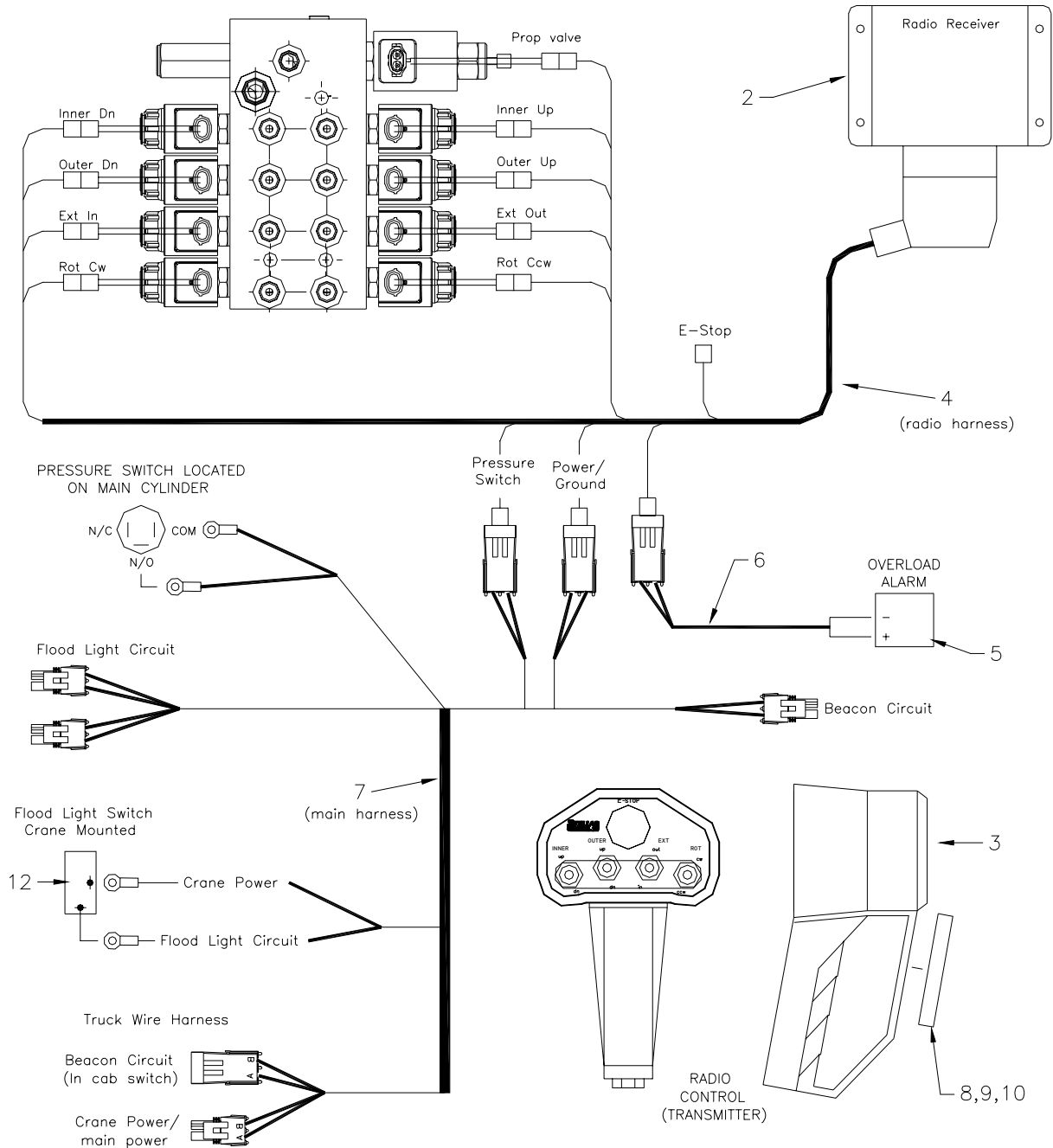
ITEM NO.	PART NO.	DESCRIPTION	QTY.
1	10504	INNER BOOM 2200	1
2	10541	PIN 1.50X9.63 D&T	2
3	10545	PIN 1.50x8.13 D&T	3
4	7403	PIN CAP 0.44X2.50X.252	10
5	C6353	WASHER 0.38 FLAT GR8	10
6	0351	CAP SCR 0.38-16X1.00 HHGR5	10
7	11188	CYLINDER 3.50X17.38	2
8	0067	BUSHING QSI-2426-24	12

EXTENSION BOOM ASSEMBLY P/N 18035



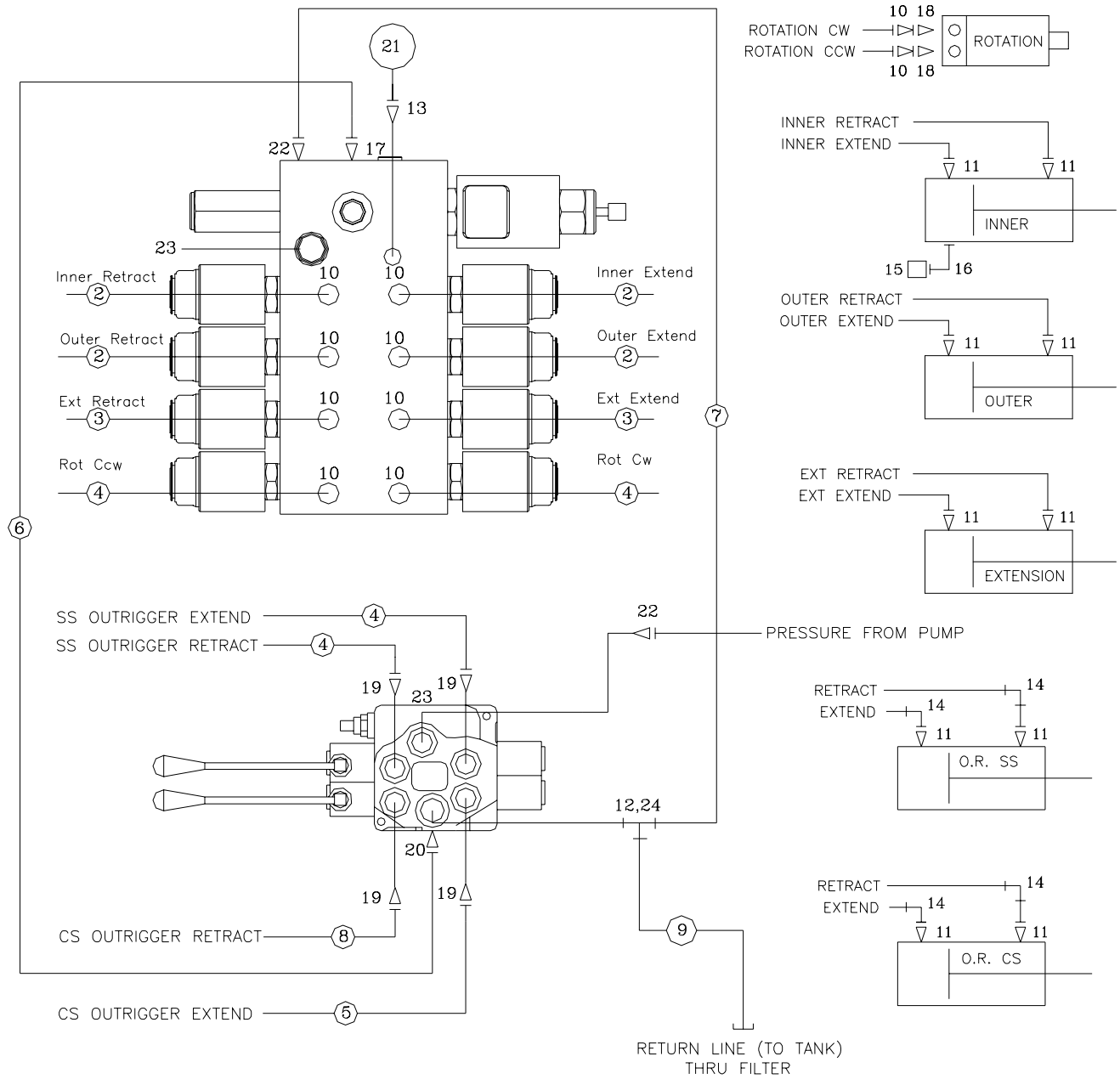
ITEM NO.	PART NO.	DESCRIPTION	QTY.	ITEM NO.	PART NO.	DESCRIPTION	QTY.
1	10399	OUTER BOOM 2200	1	11	D0770	CYLINDER EXT 3200	1
2	10547	PIN 1.50X6.88 D&T	1	12	0067	BUSHING QSI-2426-24	2
3	6252	WEAR PAD 0.34X2.50 RND NYLATRON	4	13	11189	BUSHING 1.50IDX2.00OD	1
4	D0583	EXTENSION BOOM 3200	1	14	C5902	WASHER 0.63 FLAT GR8	1
5	9363	WEAR PAD 1.12X2.00 RND NYLATRON	4	15	C4736	CAP SCR 0.63-11X2.25 HH Z	1
6	9361	PLATE WEAR PAD COVER 3200	4	16	4485	BUSHING HOOK 3200	1
7	C6353	WASHER 0.38 FLAT GR8	18	17	4541	CAP SCR 1.00-8X5.00 HHGR5	1
8	9843	CAP SCR 0.38-16X0.75 HHGR8	16	18	0991	NUT 1.00 HH NYLOC	1
9	7403	PIN CAP 0.44X2.50X.252	2	19	3863	HOOK 5 TON	1
10	0351	CAP SCR 0.38-16X1.00 HHGR5	2				

CONTROL KIT



12	C4815	SWITCH TOGGLE ON/OFF	1
11	16255	BATTERY CHARGER W/BTRY 110-3.6V	1
10	C4956	NUT #10-24 HH NYLOC SS	1
09	D1711	CAP SCR #10-24X0.50 BTNHD SS	1
08	6629	MAGNET	1
07	19076	WIRE HARNESS - CRANE	1
06	12981	WIRE HARNESS OVERLOAD ALARM	1
05	D0045	OVERLOAD ALARM	1
04	12135	WIRE HARNESS - RADIO	1
03	11833	TRANSMITTER (PART OF 1)	1
02	11847	RECEIVER (PART OF 1)	1
01	11832	RADIO SYSTEM 4 FUNCTION	1
ITEM	PART No.	DESCRIPTION	QTY

HYDRAULIC KIT P/N 13016

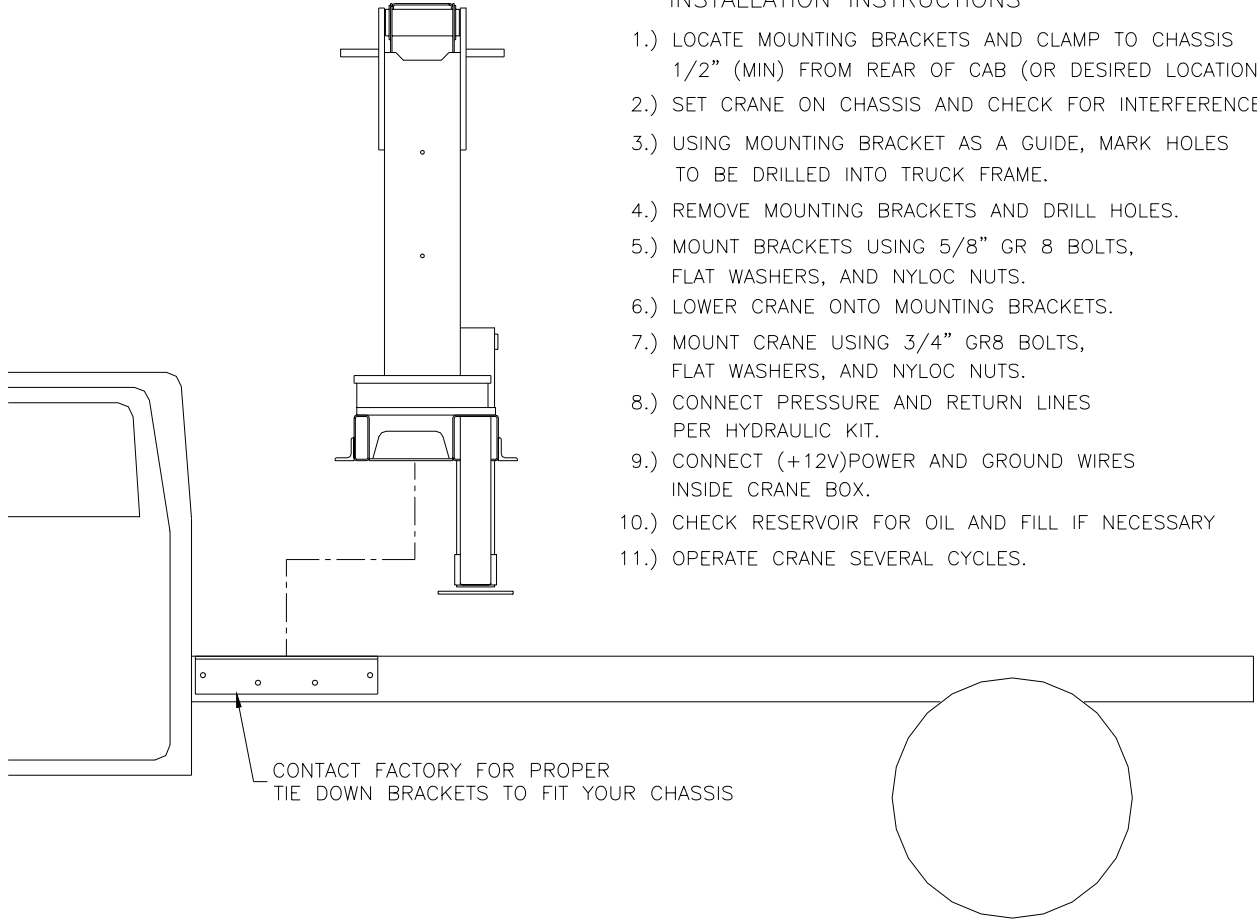


12	7350	FTG ST RUN TEE 8R50LO	1	24	14441	FTG ADAPT MSTR/FSTR 10-8 F50G5	1
11	D1291	FTG ADAPT 4-F50LO-S	10	23	D1535	PLUG STR HOLLOW HEX 0.50	1
10	3338	FTG ADAPT 4-6C50LO	10	22	1554	FTG ADAPT 8-F50LO-S	2
09	13020	HOSE .50 X 66.00	1ref	21	6397	GUAGE OIL	1
08	13011	HOSE .25 X 26.00	1ref	20	C1854	FTG ADAPT 6-8 F50LO-S	1
07	13013	HOSE .38 X 88.00	1ref	19	12160	FTG ADAPT 4-8 F50LO-S	4
06	13014	HOSE .50 X 90.00	1ref	18	C1111	FTG ADAPT MSTR/FSTR 10-6 F50G5	2
05	13438	HOSE .25 X 26.00	1ref	17	0279	FTG ADAPT 6-F50LO-S	1
04	13010	HOSE .25 X 99.00	4ref	16	3861	FTG ML FM O-RING 90 DEG	1
03	13437	HOSE .25 X 118.00	2ref	15	3862	SWITCH PRES OVERLD	1
02	4534	HOSE .25 X 68.00	4ref	14	D1314	FTG SWIVEL NUT ELBOW 4-C6LO-S	4
01	13008	HOSE KIT 2200	1	13	D1430	FTG ADAPT O-RING FMP 6-1/4 F50G-S	1
ITEM	PART No.	DESCRIPTION	QTY	ITEM	PART No.	DESCRIPTION	QTY

INSTALLATION KIT

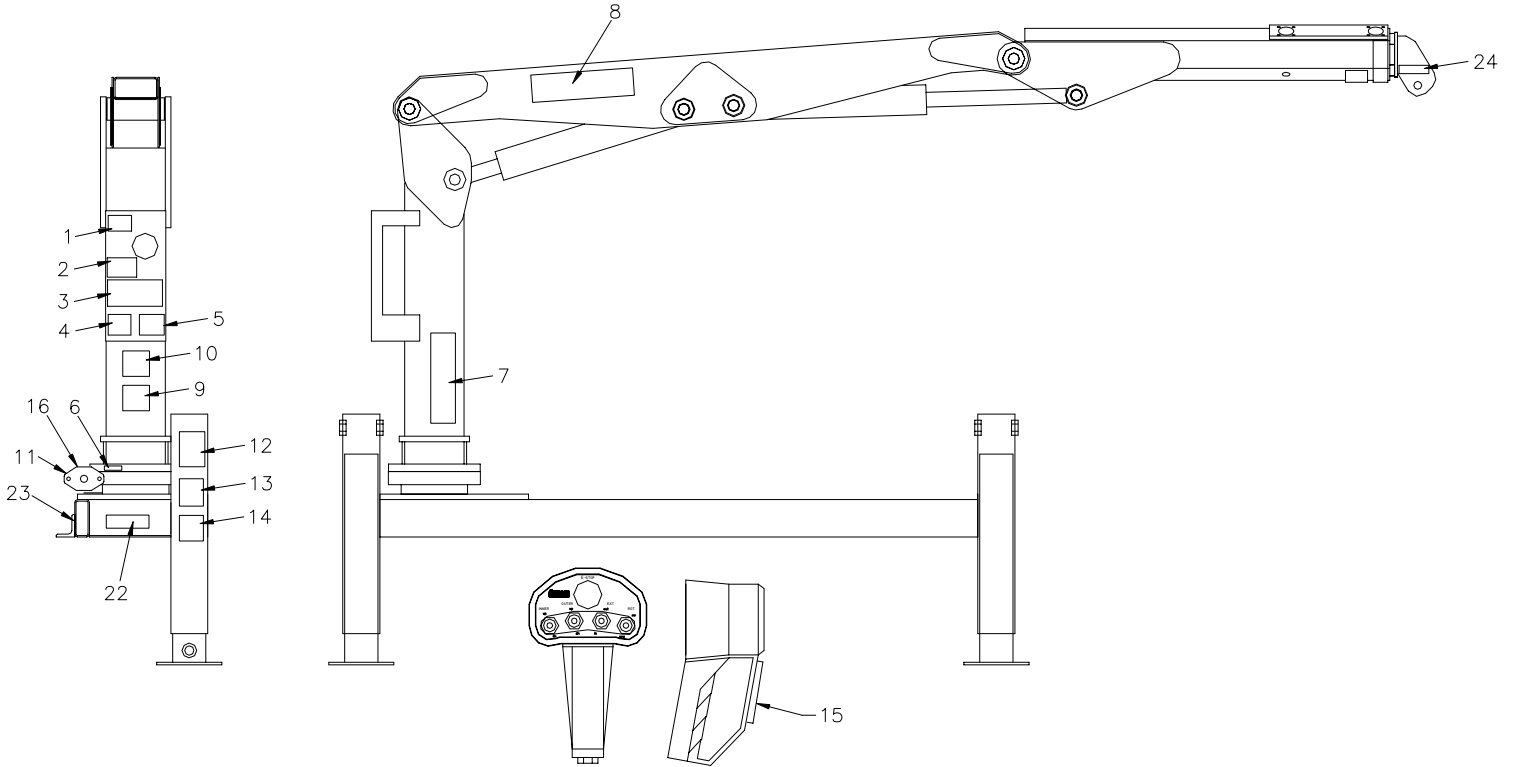
INSTALLATION INSTRUCTIONS

- 1.) LOCATE MOUNTING BRACKETS AND CLAMP TO CHASSIS 1/2" (MIN) FROM REAR OF CAB (OR DESIRED LOCATION).
- 2.) SET CRANE ON CHASSIS AND CHECK FOR INTERFERENCES.
- 3.) USING MOUNTING BRACKET AS A GUIDE, MARK HOLES TO BE DRILLED INTO TRUCK FRAME.
- 4.) REMOVE MOUNTING BRACKETS AND DRILL HOLES.
- 5.) MOUNT BRACKETS USING 5/8" GR 8 BOLTS, FLAT WASHERS, AND NYLOC NUTS.
- 6.) LOWER CRANE ONTO MOUNTING BRACKETS.
- 7.) MOUNT CRANE USING 3/4" GR8 BOLTS, FLAT WASHERS, AND NYLOC NUTS.
- 8.) CONNECT PRESSURE AND RETURN LINES PER HYDRAULIC KIT.
- 9.) CONNECT (+12V)POWER AND GROUND WIRES INSIDE CRANE BOX.
- 10.) CHECK RESERVOIR FOR OIL AND FILL IF NECESSARY
- 11.) OPERATE CRANE SEVERAL CYCLES.



06	C0538	NUT, 0.75-10 NYLOC	4
05	C6219	WASHER, 0.75 FLAT SAE	8
04	4974	CAP SCR, 0.75-10 X 2.50 HHGR8	4
03	2826	NUT, 0.63-11 NYLOC	8
02	C5902	WASHER, 0.63 FLAT SAE	16
01	C1025	CAP SCR, 0.63-11 X 2.00 HHGR8	8
ITEM	PART No.	DESCRIPTION	QTY

DECAL KIT



25	15172	DECAL ASME/ANSI B30.22/B30.5	1
24	16973	DECAL USE STELLAR APPROVED ATTACHMT	2
23	13036	DECAL CRANE OUTRIGGER	1
22	4158	DECAL 3200 PANEL	1
*21	C0568	DECAL DIESEL ONLY	2
*20	C5910	DECAL STELLAR LOGO 4.00X9.50	1
*19	C4545	DECAL DANGER ELECTROCUTION	4
*18	C1179	DECAL DANGER ELECTROCUTION HORTL	2
*17	4305	DECAL FLOOD LIGHTS 1.13X0.88	1
16	15171	DECAL GREASE WORM DRIVE BEARINGS	1
15	6832	DECAL-MAGNET COVER	1
14	C4795	DECAL DANGER FOOT	2
13	C5918	DECAL CAUTION STAND CLEAR	2
12	C4541	DECAL WARNING	2
11	9188	DECAL WORM GEAR LUBRICATION	1
10	C4544	DECAL CAUTION	1
09	4189	DECAL DANGER OPERATION RESTRICTION	1
08	12822	DECAL IDENTIFICATION 2200	2
07	12821	DECAL CAPACITY 2200	2
06	4188	DECAL ROTATIONAL ALIGNMENT	1
05	C4540	DECAL DANGER	1
04	4190	DECAL DANGER OPERATION CONDITION	1
03	4187	DECAL DANGER REMT ELECTROCUTN LARGE	1
02	4214	DECAL CONTACT STELLAR	1
01	C5911	DECAL STELLAR LOGO 2.00X4.50	3
ITEM	PART No.	DESCRIPTION	QTY

* THESE DECALS NOT SHOWN(USE WITH BODY PACKAGE)

Limited Warranty Statement

for Stellar Tire Service Trucks, Truck-mounted Cranes, Truck-mounted Stellarc Welders & Truck-mounted Compressed Air Systems ONLY

Stellar Industries, Inc. (Stellar) warrants products designed and manufactured by Stellar to be free from defects in material and workmanship under proper use and maintenance. Products must be installed and operated in accordance with Stellar's written instructions and stated lifting capacities. The warranty period shall be Twelve (12) month warranty on all Stellar designed and fabricated parts, and Ninety (90) days repair labor.

The warranty period shall begin from the date recorded by Stellar as the in-service date. This date will be derived from the completed warranty registration card. In the event a warranty registration card is not received by Stellar, the factory ship date will be used. Stellar's obligation under this warranty is limited to, and the sole remedy for any such defect shall be, the repair and/or replacement (at Stellar's option) of the part and/or component in question. Stellar after-sales service personnel must be notified by telephone, fax, e-mail, or mail of any warranty-applicable damage within fourteen (14) days of its occurrence. If at all possible, Stellar will ship the replacement part within 24-hours of notification by the most economical, yet expedient, means possible. Expedited freight delivery will be at the expense of the owner.

Warranty claims must be submitted and shall be processed in accordance with Stellar's established warranty claim procedure. Stellar Service personnel must be contacted prior to any warranty claim. A return materials authorization (RMA) account number must be issued to the claiming party prior to the return of any warranty parts. Parts returned without prior authorization will not be recognized for warranty consideration. All damaged parts must be returned to Stellar freight prepaid; freight collect returns will be refused.

Warranty service will be performed by any Stellar new equipment distributor, or by any Stellar-recognized service center authorized to service the type of product involved, or at the Stellar factory. At the time of requesting warranty service, the owner must present evidence of date of delivery of the product. The owner shall be obligated to pay for any overtime labor requested of the servicing company by the owner, any field service call charges, and any towing and/or transportation charges associated with moving the equipment to the designated repair/service provider.

All obligations of Stellar and its authorized dealers and service providers shall be voided if someone other than an authorized Stellar dealer provides other than routine maintenance service without prior written approval from Stellar. In the case repair work is performed on the Stellar-manufactured product, original Stellar parts must be used to keep the warranty in force. The warranty may also be voided if the product is modified or altered in any way not approved, in writing, by Stellar engineering.

The owner/operator is responsible for furnishing proof of the date of original purchase of the Stellar product in question. Warranty registration is the ultimate responsibility of the owner and may be accomplished by the completion and return of the Stellar product registration card provided with the product. If the owner is unsure of registration, he is encouraged to contact Stellar at the address below to confirm registration of the product in question. This warranty covers only defective material and workmanship. It does not cover depreciation or damage caused by normal wear and tear, accident, mishap, untrained operators, or improper or unintended use. The owner has the obligation of performing routine care and maintenance duties as stated in Stellar's written instructions, recommendations, and specifications. Any damage resulting from owner/operator failure to perform such duties shall void the coverage of this warranty. The cost of labor and supplies associated with routine maintenance will be paid by the owner.

The only remedies the owner has in connection with the breach or performance of any warranty on the Stellar product specified are those set above. In no event will Stellar, the Stellar distributor/dealer, or any company affiliated with Stellar be liable for business interruptions, costs of delay, or for any special, indirect, incidental, or consequential costs or damages. Such costs may include, but are not limited to, loss of time, loss of revenue, loss of use, wages, salaries, commissions, lodging, meals, towing, hydraulic fluid, or any other incidental cost.

All products purchased by Stellar from outside vendors shall be covered by the warranty offered by that respective manufacturer only. Stellar does not participate in, or obligate itself to, any such warranty.

Hydraulic cylinders used in Stellar products are subject to the same warranty provisions stated above. Should a cylinder defect develop within the above stated warranty period, notify Stellar immediately. Stellar will ship, freight prepaid, by the most effective, expedient, means a new or re-manufactured cylinder of the same size and type. An authorization for return of the original part will be issued at the time the order is placed. The defective cylinder is to be returned to Stellar freight prepaid by the owner. Cylinders returned freight collect will be refused. Should the defective cylinder not be returned within 30 days of shipping the replacement cylinder, the owner is responsible to pay Stellar the full purchase price of the replacement part.

Stellar reserves the right to make changes in design or improvement upon its products without imposing upon itself the same upon its products theretofore manufactured.

This warranty will apply to all Stellar Tire Service Trucks, Truck-mounted Cranes, Truck-mounted Stellarc Welders & Truck-mounted Compressed Air Systems shipped from Stellar's factory after January 1, 1997. The warranty is for the use of the original owner only and is not transferable without prior written permission from Stellar.

THIS WARRANTY IS EXPRESSLY IN LIEU OF ANY OTHER WARRANTIES, EXPRESS OR IMPLIED, INCLUDING ANY WARRANTY OF MERCHANTABILITY OR FITNESS FOR A PARTICULAR PURPOSE. REMEDIES UNDER THIS WARRANTY ARE LIMITED TO THE PROVISION OF MATERIAL AND SERVICES, AS SPECIFIED HEREIN. STELLAR INDUSTRIES, INC. IS NOT RESPONSIBLE FOR INCIDENTAL OR CONSEQUENTIAL DAMAGES.

Stellar Industries, Inc. • 280 West Third Street • Garner, Iowa 50438 • U.S.A.

E-Mail • sales@stellar-industries.com

Telephone: 800/321-3741; 641/923-3741 • Fax: 641/923-2812; 641/923-2811

REVISED 10/05/2000