



CRANE
MODEL 23000/
TM12154

280 W. 3rd St., Box 169 • Garner, IA 50438 • Phone: 641-923-3741 • Fax: 641-923-2812

UPDATED 9/6/02

TABLE OF CONTENTS
23000/TM12154

PAGE	DESCRIPTION
3.)	SPECIFICATION SHEET-23000
4.)	SPECIFICATION SHEET-TM12154
5.)	CAPACITY CHART-23000
6.)	CAPACITY CHART-TM12154
7.)	CRANE OPERATION
8.)	BASE ASSEMBLY
9.)	MAST ASSEMBLY
10.)	BOOM ASSEMBLY-23000
11.)	BOOM ASSEMBLY-TM12154
12.)	TIRE MANIPULATOR ASSEMBLY
13.)	CONTROL KIT
14.)	HYDRAULIC KIT
15.)	WARRANTY

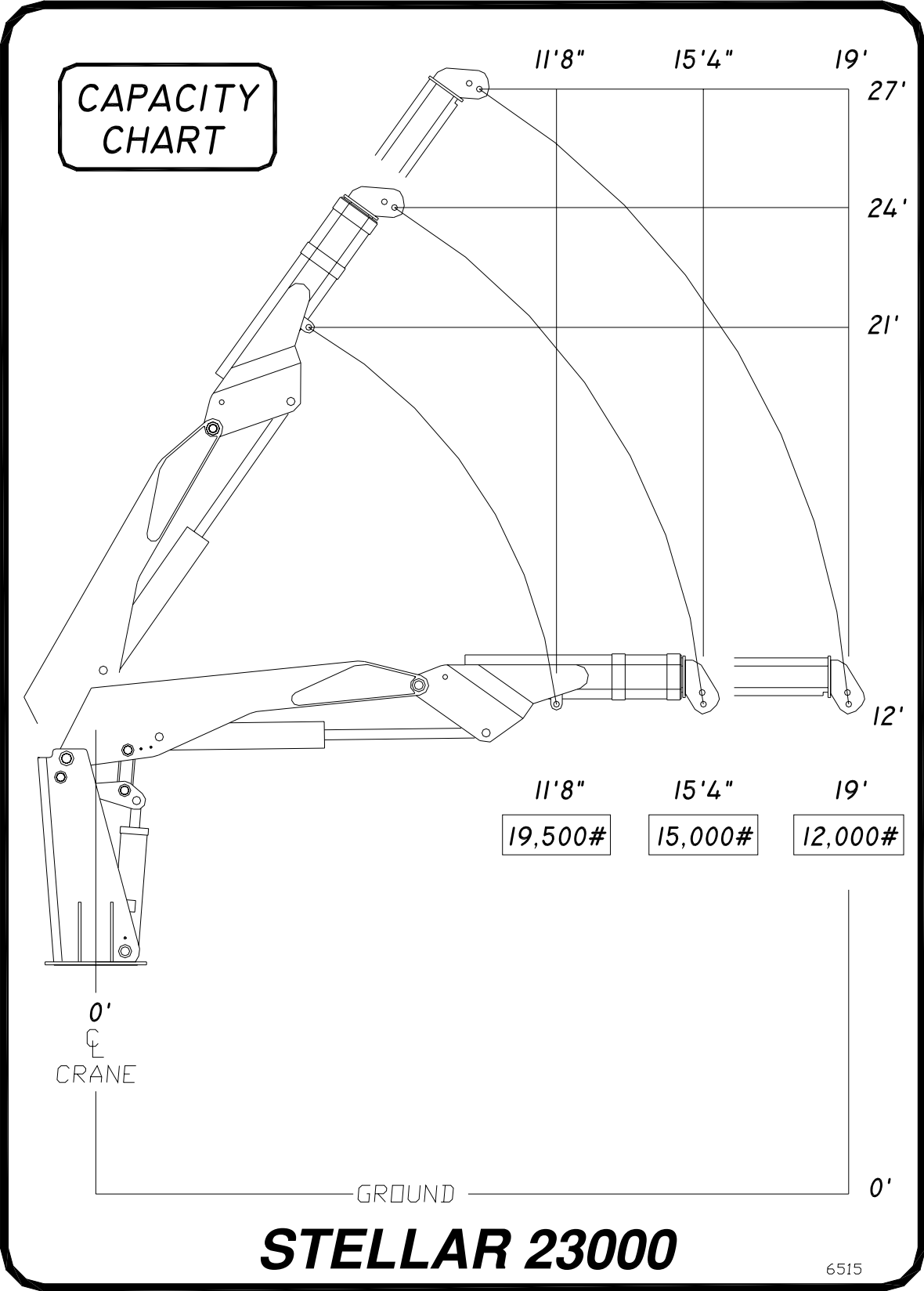
Model 23000 HYDRAULIC ARTICULATED CRANE

Crane Rating	230,000 ft/pounds
Standard Boom Length	15'4" -from CL of Crane
Boom Extension	Hydraulic 44 inches
Maximum Horizontal Reach	19 ft-from CL of Crane
Maximum Vertical Lift (From truck frame)	24 ft
Inner Lift Cylinder	7 inch bore with integral pilot operated counterbalance valves.
Outer Lift Cylinder	7 inch bore with integral pilot operated counterbalance valves.
Extension Cylinder	4 inch bore with integral pilot operated counterbalance valves.
Rotation	360 degree (continuous)
Lifting Capacities (From CL of Truck)	19,500 pounds @ 11'8" 15,000 pounds @ 15'4" 12,000 pounds @ 19'
Power Supply Required	PTO & Pump (16 gpm @ 4200 psi)
Controls	Radio controlled Proportional remote
Stowed Height (Above truck frame)	103 inches
Mounting Space required:	48 inches
Approximate Shipping Weight	9000 pounds

MODEL TM12154 HYDRAULIC TIRE MANIPULATOR

Manipulator Rating	230,000 ft/pounds
Clamp Span	48 inches to 154 inches
Maximum Horizontal Reach	17 ft-from CL of Crane
Inner Lift Cylinder	7 inch bore with integral pilot operated counterbalance valves.
Outer Lift Cylinder	7 inch bore with integral pilot operated counterbalance valves.
Manipulator Articulating Cylinder	6 inch bore with integral pilot operated counterbalance valves.
Clamp Cylinder	4 inch bore with integral pilot operated counterbalance valves.
Tire Manipulator Mast Rotation	360 degree (continuous)
Tire Manipulator Body Rotation	360 degree (continuous)
Clamping Pad Rotation	360 degree (continuous)
Lifting Capacities (From CL of Truck)	12,000 pounds @ 17'
Power Supply Required	PTO & Pump (16 gpm @ 4200 psi)
Controls	Radio controlled Proportional remote
Stowed Height (Above truck frame)	103 inches
Mounting Space required:	48 inches
Approximate Shipping Weight	12000 pounds

CAPACITY CHART-23000



CAPACITY CHART-TM12154



TIREMAN - TM12154
CAPACITY CHART

MAXIMUM CAPACITY

12,000 LBS
(5443 KG)

TIRE APPLICATION CHART

NARROW BASE TIRE SIZE

WIDE BASE TIRE SIZE

TIRE SIZE	MAX TIRE DIA.(in)	TIRE & RIM WEIGHT (lbs)	TIRE SIZE	MAX TIRE DIA.(in)	TIRE & RIM WEIGHT (lbs)
18.00-25	66	1,100	23.5-25	66	1,500
18.00-33	74	1,650	26.5-25	71	2,000
21.00-35	82	2,050	29.5-29	79	2,300
24.00-35	87	2,400	33.25-29	83	1,600
24.00-49	101	4,600	35/65-33	81	2,900
27.00-49	107	4,600	33.25-35	91	3,400
30.00-51	115	5,900	37.25-35	96	4,000
33.00-51	122	6,500	40/65-39	96	4,200
36.00-51	129	8,300	37.5-39	103	4,300
37.00-57	136	10,000	45/65-45	108	6,300
40.00-57	143	11,000	37.5-51	114	4,900
48/95-57	151	12,400	50/65-51	121	8,000
50/90-57	151	12,700	67.5/65-51	138	13,000
55/80-63	153	16,400	50/80-57	144	11,000
<div style="border: 1px solid black; padding: 5px; margin-bottom: 5px;">Wide base tire weights DO NOT include rim.</div> <div style="border: 1px solid black; padding: 5px;">Any tires which are shaded are NOT within Tireman-TM12154 capacity</div>			55.5/80-57	147	12,000
			49.5/85-57	156	12,900
			55/80-57	147	12,900
			53.5/85-57	154	13,800



Figures derived from Bridgestone/Firestone,
Michelin North America and Rimtec/Topy.

280 West Third Street P.O. BOX 169 Garner, Iowa 50438
Phone: 800/321-3741 Fax 641/923-2812

16794

CRANE OPERATION

THIS CRANE IS CONTROLLED BY AN ELECTRONICALLY OPERATED VALVE BANK.

THE CONTROLLER FOR THIS VALVE IS SHOWN BELOW.

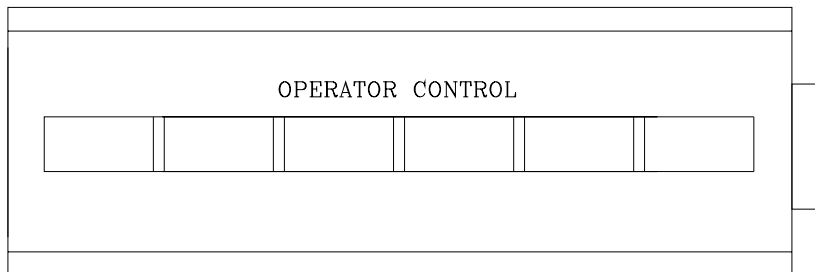
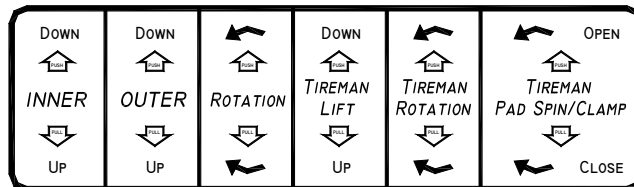
THE FUNCTIONS THAT IT CONTROLS ARE AS FOLLOWS:

- INNER BOOM UP & DOWN
- OUTER BOOM UP & DOWN
- EXTENSION BOOM IN & OUT
- ROTATION CW & CCW
- TIREMAN CLAMP
- TIREMAN ROTATION

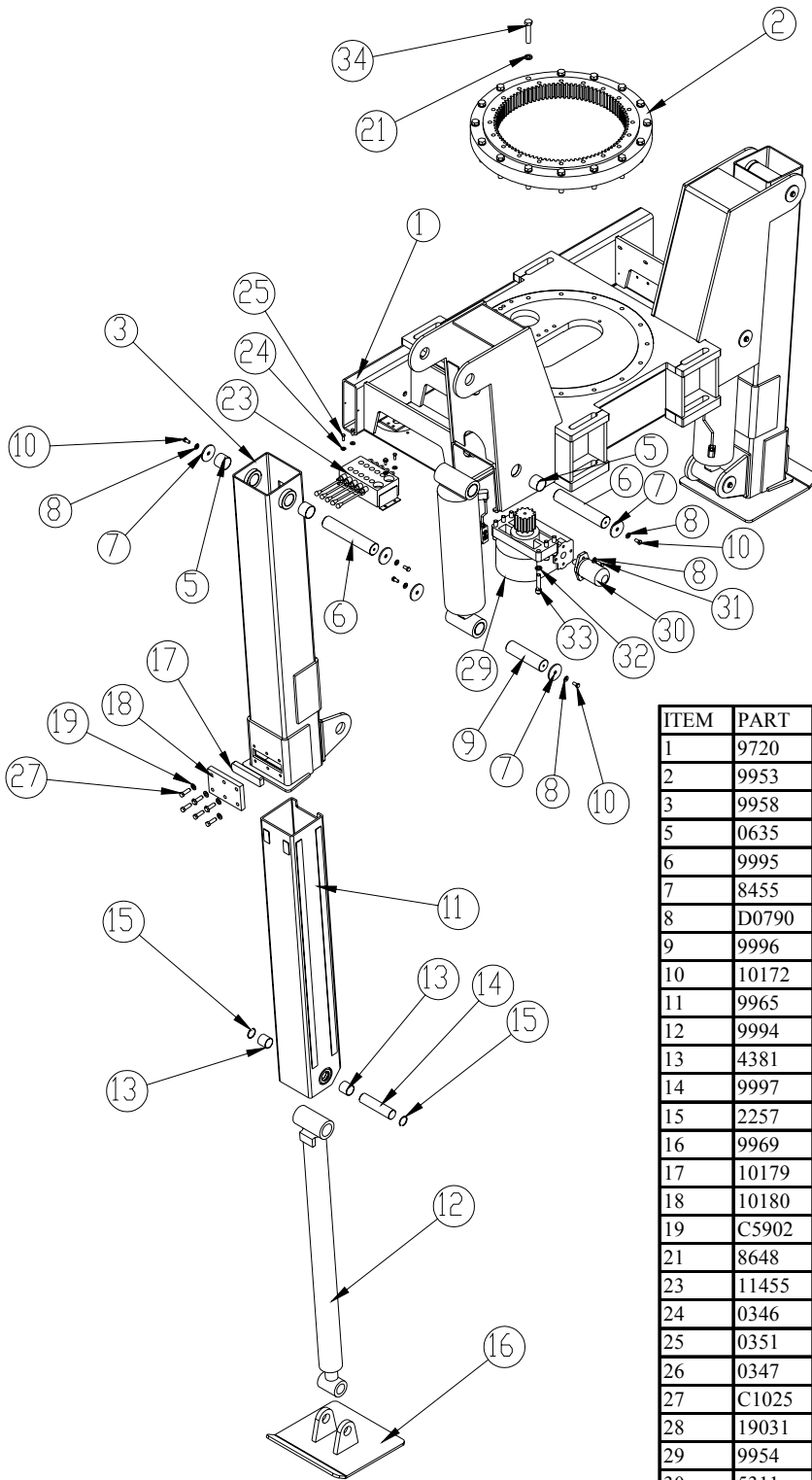
THIS IS A FULLY PROPORTIONAL HYDRAULIC SYSTEM.

TO OPERATE A FUNCTION, PUSH OR PULL THE PADDLE A DESIRED DISTANCE TO VARY THE SPEED.

NOTE: IN THE EVENT THAT CRANE HYDRAULICS WILL NOT OPERATE WITH THE HANDLE, USE THE MANUAL OVERRIDES LOCATED ON THE VALVE BANK.

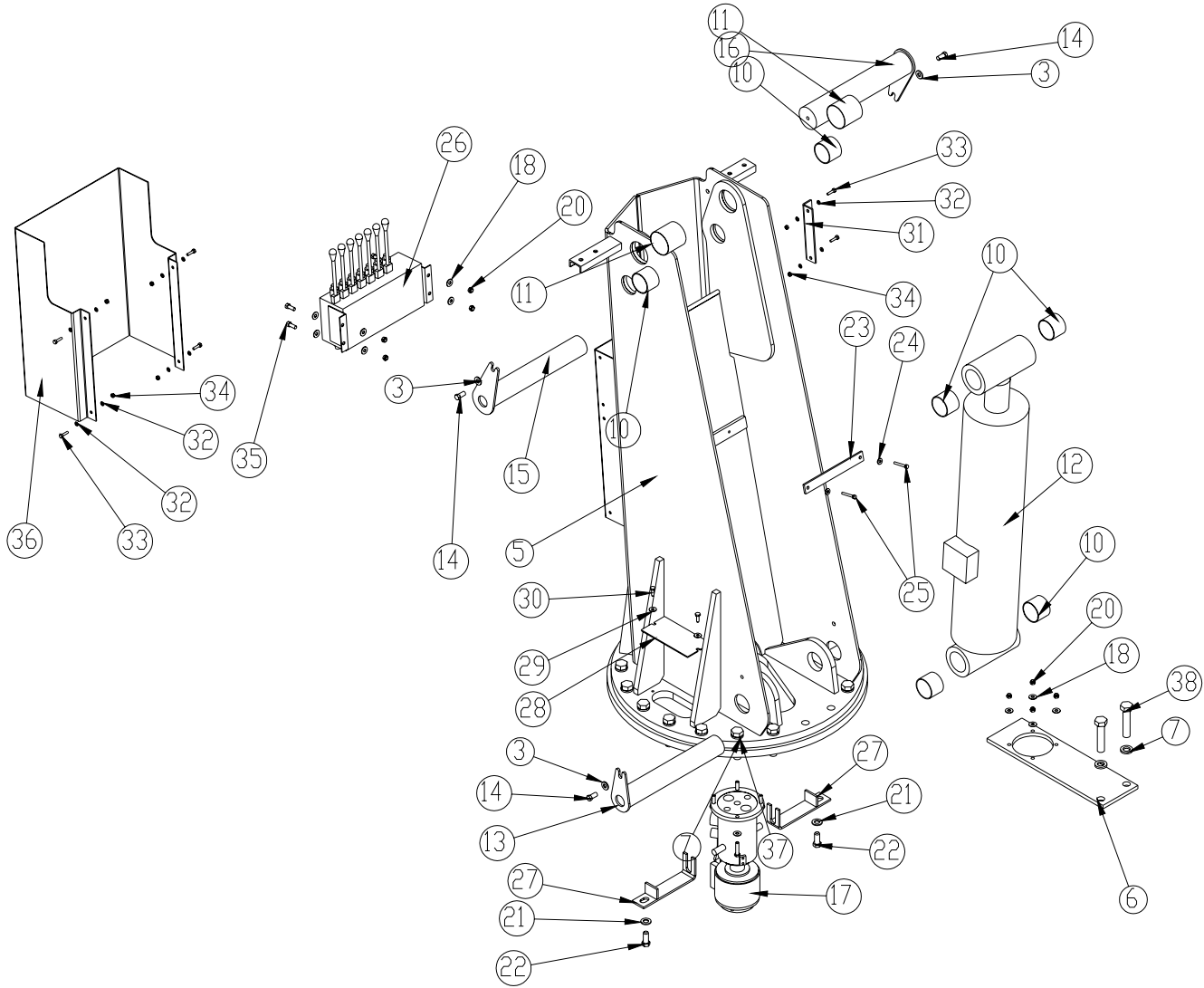


BASE ASSEMBLY



ITEM	PART	DESCRIPTION	QTY
1	9720	BASE CRANE 23000	1
2	9953	TURNTABLE BEARING 23000	1
3	9958	OUTRIGGER 23000	2
5	0635	BUSHING 40DXR32 GARLOCK	8
6	9995	PIN 2.50X13.38 D&T	4
7	8455	PIN CAP 0.69X3.50X0.25 SS	12
8	D0790	WASHER 0.50 FLAT GR8	14
9	9996	PIN 2.50X9.38 D&T	2
10	10172	CAP SCR 0.50-13X1.00 HHGR8 ZY	12
11	9965	OUTRIGGER LEG 23000	2
12	9994	CYLINDER 4.00X50.00	2
13	4381	BUSHING 32DXR32 2.00X2.00 GARLOCK	4
14	9997	PIN 2.00x8.25	2
15	2257	SNAP RING INSIDE 2.00	4
16	9969	OUTRIGGER PAD 23000	2
17	10179	WEAR PAD OUTRIGGER 23000	2
18	10180	COVER WEAR PAD 23000	2
19	C5902	WASHER 0.63 FLAT GR8	12
21	8648	WASHER 0.88 SAE FLAT YELLOW GR8	16
23	11455	VB 5 SECT FPS TM12154	1
24	0346	WASHER 0.38 FLAT	9
25	0351	CAP SCR 0.38-16X1.00 HHGR5	4
26	0347	NUT 0.38-16 HH NYLOC	4
27	C1025	CAP SCR 0.63-11X2.00 HHGR8 ZY	12
28	19031	CYLINDER ASM 9993	2
29	9954	GEAR BOX 23000	1
30	5311	MOTOR HYD ROSS MG140611AAAB	1
31	0498	CAP SCR 0.50-13X1.25 HHGR5	2
32	C6219	WASHER 0.75 SAE FLAT YELLOW GR8	6
33	11298	CAP SCR 0.75-10X3.50 SHGR8	6
34	17962	CAP SCR 0.88-9X4.50 HHGR9 ZY	16
35	11689	PLATE SWITCH MTG 23000 CRANE	1

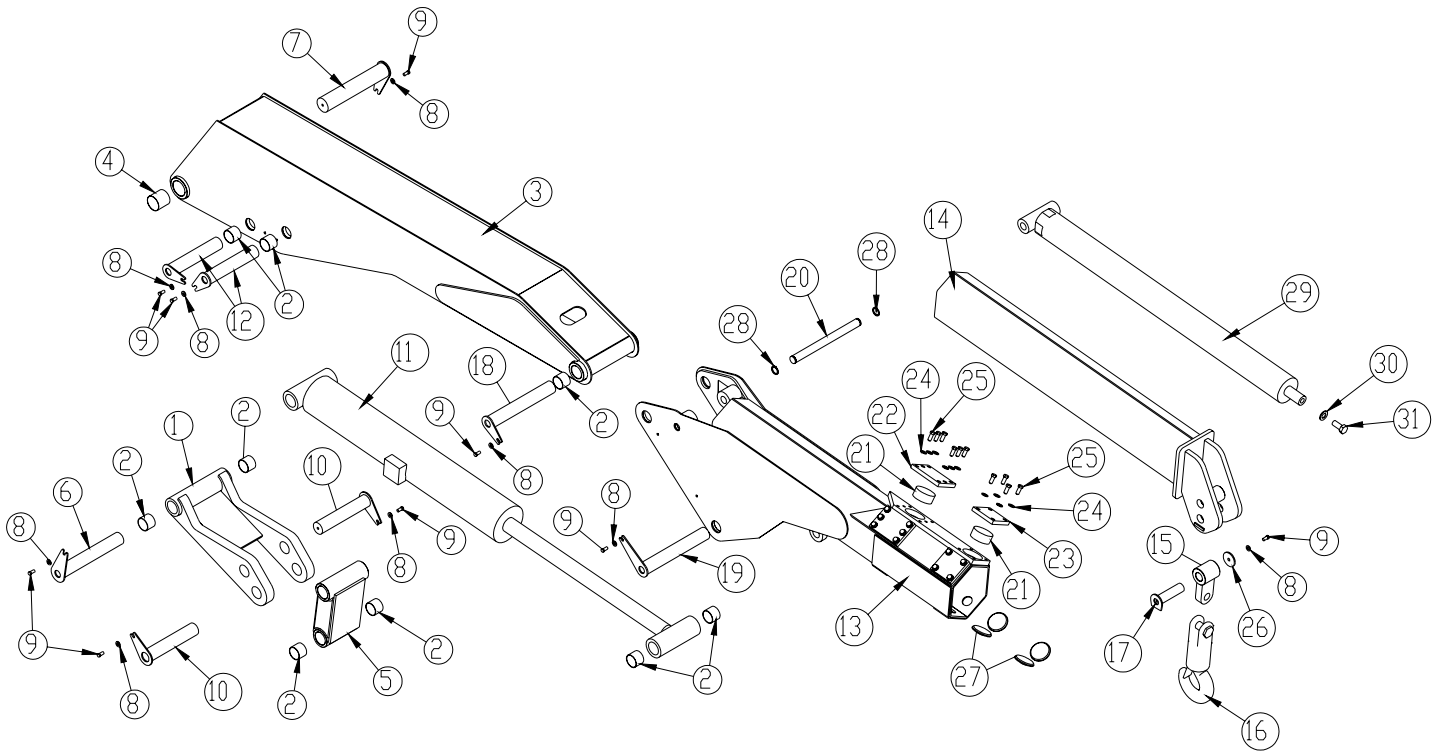
MAST ASSEMBLY



ITEM	PART	DESCRIPTION	QTY	ITEM	PART	DESCRIPTION	QTY
3	D0790	WASHER 0.50 FLAT GR8	3	23	8608	FLAT 0.25X1.25X10.00	1
5	4207	MAST 23000	1	24	0340	WASHER 0.25 FLAT	2
6	6701	PLATE ROTARY MANIFOLD MOUNT	1	25	0481	CAP SCR 0.25-20X2.00 HHGR5	2
7	8648	WASHER 0.88 SAE FLAT YELLOW GR8	20	26	9672	VB 7 SECT FPS TM12154	1
10	0635	BUSHING 40DXR32 GARLOCK	6	27	12027	MOUNTING BRACKET TM12154 ROTATOR	2
11	2227	BUSHING 48DXR48 GARLOCK	2	28	11297	PLATE INSPECTION MAST 23000	1
12	4205	CYLINDER 7.00X23.00	1	29	0343	WASHER 0.31 FLAT	2
13	4377	PIN TEAR DROP 2.50X16.50	1	30	C0922	CAP SCR 0.31-18X1.00 HHGR5	2
14	0350	CAP SCR 0.50-13X1.00 HHGR5	3	31	8301	PLATE VB MTG TM12154	1
15	4371	PIN LOCK PLATE 2.50X16.50	1	32	C1033	WASHER 0.25 USS FLAT ZINC	12
16	4370	PIN LOCK PLATE 3.00X16.50	1	33	0480	CAP SCR 0.25-20X1.00 HHGR5	6
17	6562	HYD SWIVEL 4-PORT W/6 WIRE ELEC	1	34	0333	NUT 0.25-20 HHGR5 NYLOC	6
18	0346	WASHER 0.38 FLAT	16	35	0351	CAP SCR 0.38-16X1.00 HHGR5	4
19	C0944	CAP SCR 0.38-16X1.75 HHGR5	4	36	8605	GUARD VB TM12154	1
20	0347	NUT 0.38-16 HH NYLOC	8	37	17963	CAP SCR 0.88-9X3.50 HHGR9 ZY	18
21	C5902	WASHER 0.63 FLAT GR8	2	38	23900	CAP SCR 0.88-9X4.00 HHGR9	2
22	0356	CAP SCR 0.63-11X1.50 HHGR8 ZY	2				

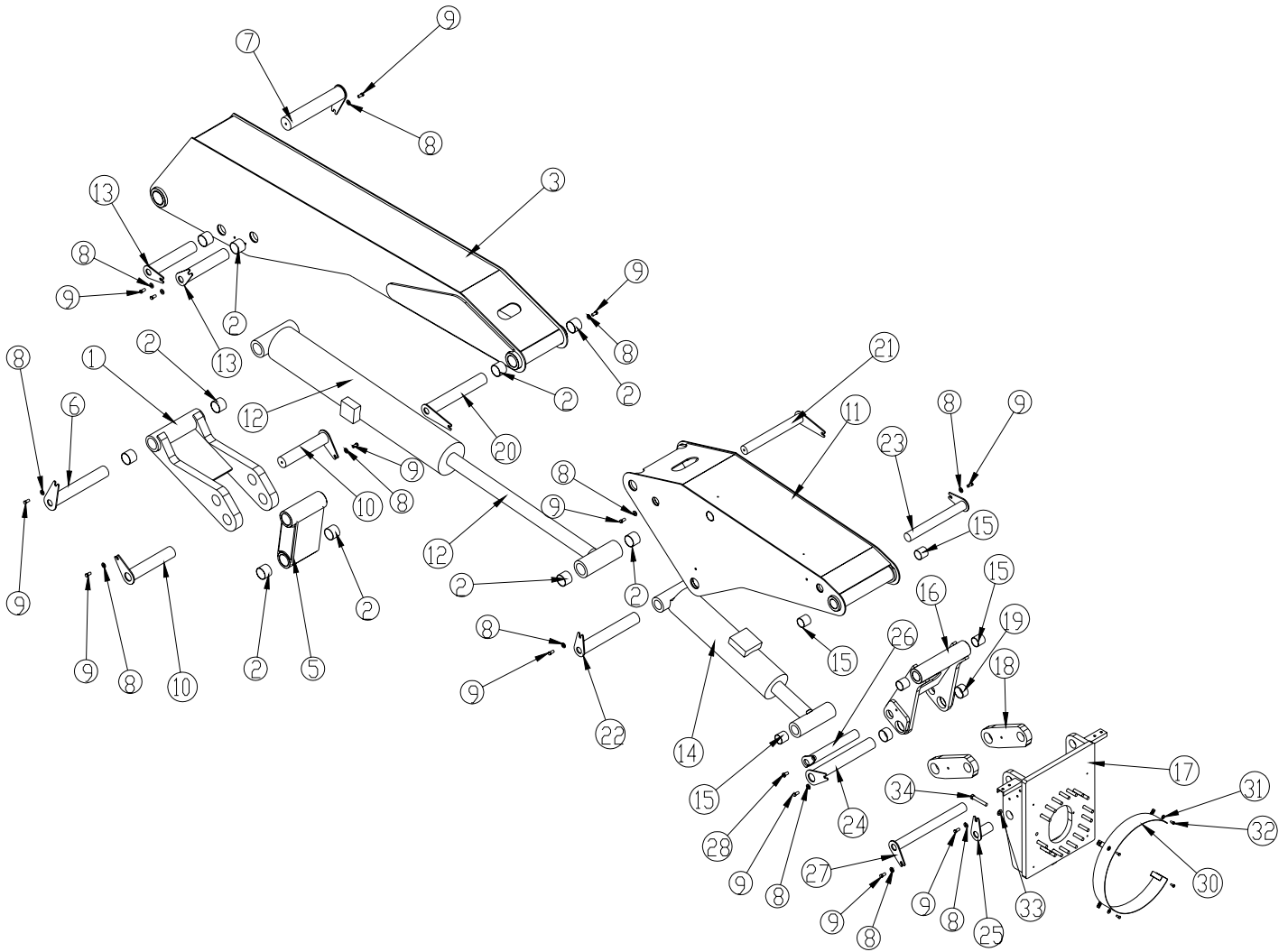
BOOM ASSEMBLY

23000



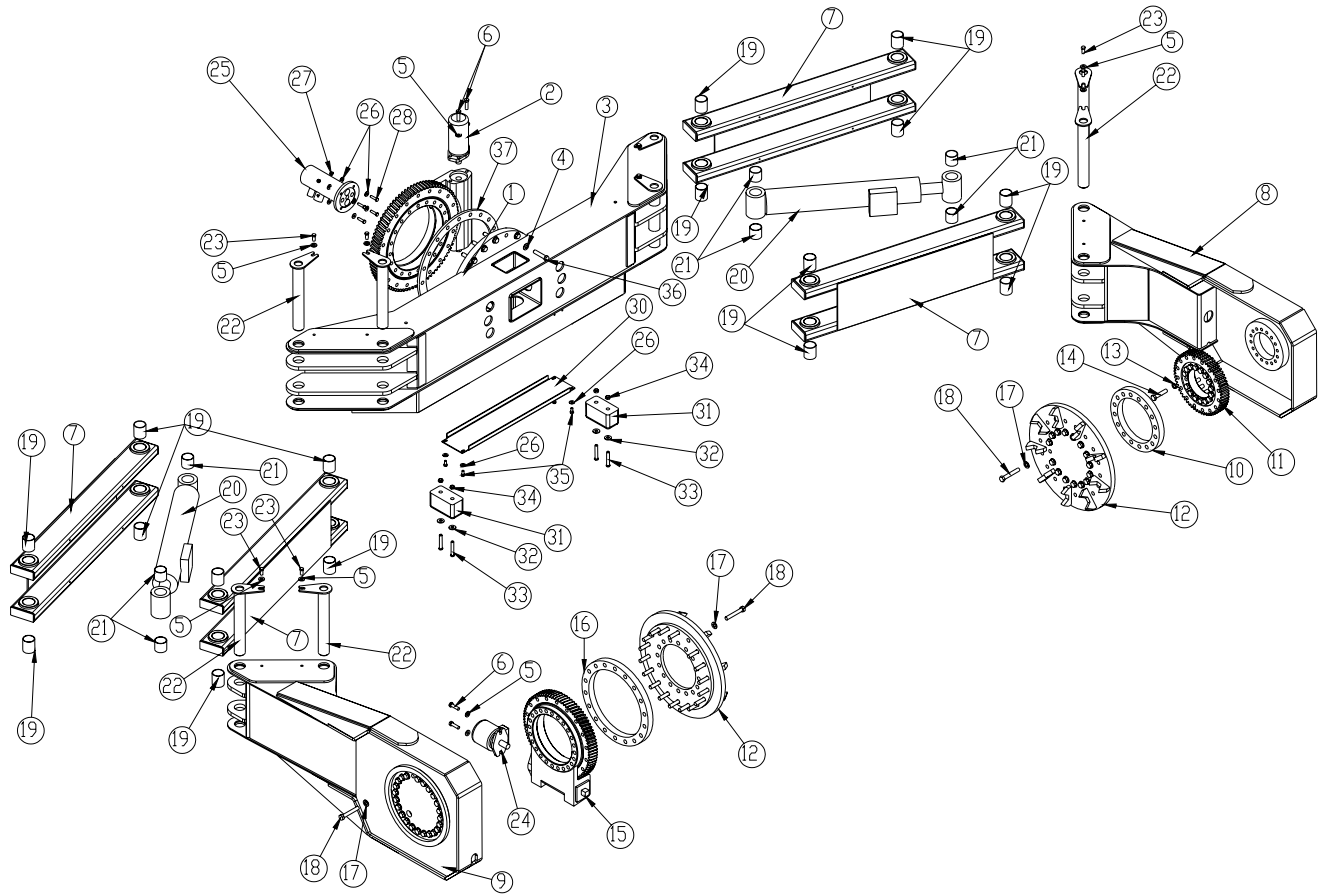
ITEM	PART	DESCRIPTION	QTY.	ITEM	PART	DESCRIPTION	QTY.
1	5494	LINK ARM WLDMNT TM12154 MAIN	1	17	6767	PIN WLDMT 1.75X6.50	1
2	0635	BUSHING 40DXR32 GARLOCK	12	18	4361	PIN TEAR DROP 2.50X17.00	1
3	4222	INNER BOOM 23000	1	19	4367	PIN LOCK PLATE 2.50X17.00	1
4	2227	BUSHING 48DXR48 GARLOCK	2	20	3720	PIN 1.50X17.88	1
5	5459	LINK WLDMT TM12154 MAIN	1	21	9683	WEAR PAD 1.69X4.00 RND NYLATRON	4
6	4371	PIN LOCK PLATE 2.50X16.50	1	22	10398	PLATE WEAR PAD COVER 23000	2
7	4370	PIN LOCK PLATE 3.00X16.50	1	23	9682	PLATE WEAR PAD COVER 23000	2
8	D0790	WASHER 0.50 FLAT GR8	9	24	C5902	WASHER 0.63 FLAT GR8	20
9	0350	CAP SCR 0.50-13X1.00 HHGR5	9	25	0356	CAP SCR 0.63-11X1.50 HHGR8 ZY	20
10	4375	PIN LOCK PLATE 2.50X13.00	2	26	5145	PIN CAP 0.56X3.00X.25	1
11	4211	CYLINDER 7.00X23.00	1	27	6355	WEAR PAD 0.38X4.00 RND NYLATRON	4
12	4368	PIN TEAR DROP 2.50X13.25	2	28	0246	SNAP RING ID 7200 150	2
13	6322	OUTER BOOM 23000 CRANE	1	29	6321	CYLINDER EXT 23019	1
14	6272	EXT BOOM 23019 CRANE	1	30	6538	WASHER 1.00 SAE FLAT YELLOW GR8	1
15	6381	SWIVEL LINK 23000 CRANE	1	31	5191	CAP SCR 1.00-8X2.25 HHGR5	1
16	6761	HOOK 10 TON SWIVEL 297618	1				

BOOM ASSEMBLY TM12154



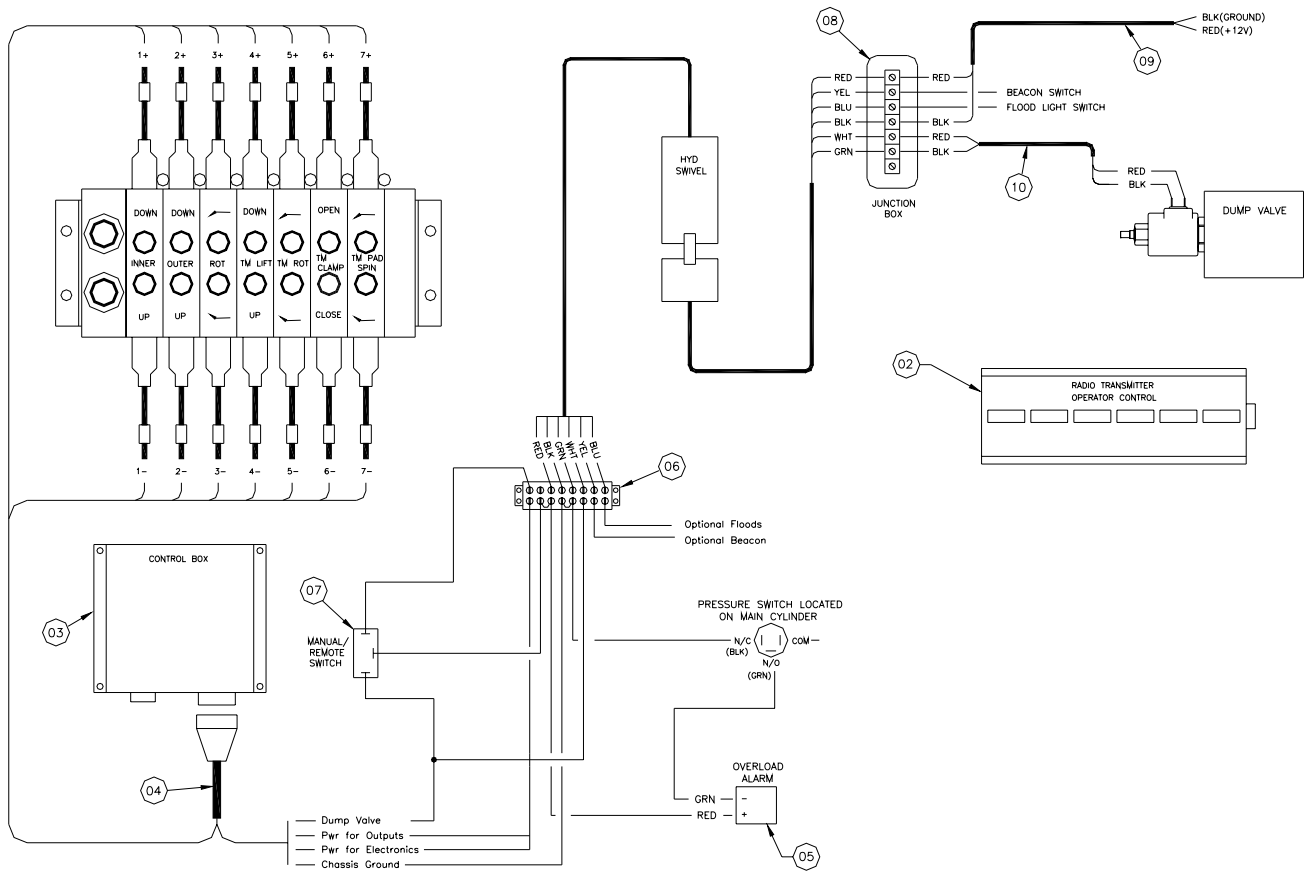
ITEM	PART	DESCRIPTION	QTY.	ITEM	PART	DESCRIPTION	QTY.
1	5494	LINK ARM WLDMNT TM12154 MAIN	1	19	13817	BUSHING 40DXR24 2.50X1.50 GARLOCK	2
2	0635	BUSHING 40DXR32 GARLOCK	12	20	4367	PIN LOCK PLATE 2.50X17.00	1
3	4222	INNER BOOM 23000	1	21	4363	PIN LOCK PLATE 2.00X17.00	1
4	2227	BUSHING 48DXR48 GARLOCK	2	22	4361	PIN TEAR DROP 2.50X17.00	1
5	5459	LINK WLDMT TM12154 MAIN	1	23	4359	PIN TEAR DROP 2.00X17.00	1
6	4371	PIN LOCK PLATE 2.50X16.50	1	24	13303	PIN TEAR DROP 2.50X18.00	1
7	4370	PIN LOCK PLATE 3.00X16.50	1	25	4356	PIN TEAR DROP 2.00X4.00	2
8	D0790	WASHER 0.50 FLAT GR8	14	26	4382	PIN TEAR DROP 2.00X14.75	1
9	0350	CAP SCR 0.50-13X1.00 HHGR5	14	27	4355	PIN TEAR DROP 2.00X21.00	1
10	4375	PIN LOCK PLATE 2.50X13.00	2	28	4484	CAP SCR 0.50-13X1.00 FSHH	1
11	4274	SECONDARY 23000	1	29	8606	BRKT WLDMT HYD SWIVEL TM12154	1
12	4211	CYLINDER 7.00X23.00	1	30	4874	GUARD TTB 6000	1
13	4368	PIN TEAR DROP 2.50X13.25	2	31	0343	WASHER 0.31 FLAT	4
14	4203	CYLINDER 6.00X21.25	1	32	0420	CAP SCR 0.31-18X0.75 HHGR5	4
15	4381	BUSHING 32DXR32 2.00X2.00 GARLOCK	7	33	16733	WASHER 0.63 FLAT GR9	18
16	4310	TM LINKAGE 12,000 INNER	1	34	16655	CAP SCR 0.63-11X4.00 HHGR9 ZY	18
17	16666	BASE WLDMT TM12154	1	35	4380	BUSHING 32DXR24 2.00X1.50 GARLOCK	2
18	4309	LINK 12,000 TM12154	1				

FIRE MANIPULATOR ASSEMBLY



ITEM	PART	DESCRIPTION	QTY.	ITEM	PART	DESCRIPTION	QTY.
1	4032	BEARING SWING DRIVE S-HG-80-101-B-X	1	20	4163	CYLINDER 7.00X23.00	2
2	5665	MOTOR HYD ROSS MG240101AAAB	1	21	4381	BUSHING 32DXR32 2.00X2.00 GARLOCK	8
3	4300	BODY TM12154	1	22	4352	PIN TEAR DROP 2.00X14.25	8
4	16733	WASHER 0.63 FLAT GR9	16	23	0350	CAP SCR 0.50-13X1.00 HHGR5	8
5	D0790	WASHER 0.50 FLAT GR8	12	24	5456	MOTOR HYD NICHOLS 111A-129-AS-O	1
6	9004	CAP SCR 0.50-13X1.75 HHGR8	4	25	6202	HYD SWIVEL 4-PORT W/6 WIRE ELEC	1
7	4295	LINK TM12154	4	26	0346	WASHER 0.38 FLAT	12
8	10758	ARM TM12154(KAYDON BEARING)	1	27	0347	NUT 0.38-16 HH NYLOC	4
9	5452	ARM WLDMT TM12154 (MOTOR)	1	28	0345	CAP SCR 0.38-16X1.50 HHGR5	4
10	10550	RISER RING 1210	1	29	8606	BRKT WLDMT HYD SWIVEL TM12154	1
11	10757	BEARING SWING DRIVE TM12154	1	30	8197	COVER TM12154 HOSE	1
12	10902	PAD TM12154(KAYDON BEARING)	2	31	3945	BUMPER DOCK 3X3.38X6	2
13	12152	WASHER 0.63 FLAT SP	16	32	0352	WASHER 0.50 USS FLAT ZINC	4
14	D1034	CAP SCR 0.63-11 X 3.00 HHGR8 ZY	16	33	0504	CAP SCR 0.50-13X3.00 HHGR5	4
15	D0955	BEARING SWING DRIVE S-SW-65-85-A-R	1	34	C6106	NUT 0.50-13 HHGR5 NYLOC	4
16	5458	PLATE ARM SPACER (PAD) TM12154	1	35	0492	CAP SCR 0.38-16X0.75 HHGR5	4
17	C5902	WASHER 0.63 SAE FLAT YELLOW GR8	58	36	28505	CAP SCR 0.63-11X2.50 HHGR9 ZY	16
18	D1313	CAP SCR 0.63-11X4.00 HHGR8 ZY	58	37	28504	BASE PLATE BODY TM12154	1
19	4379	BUSHING 32DXR40 2.00X2.50 GARLOCK	16				

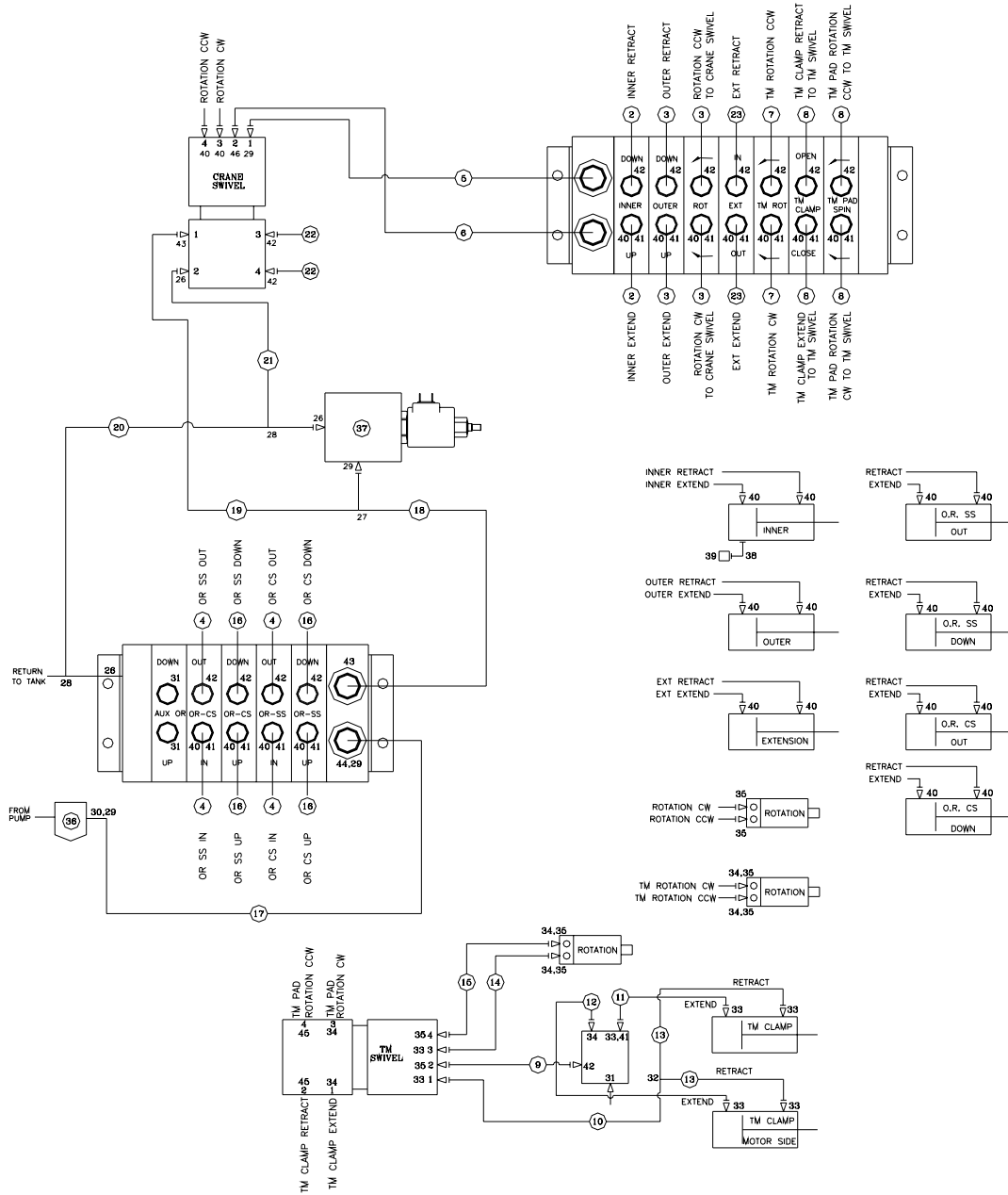
CONTROL KIT P/N 9989



ITEM	PART No.	DESCRIPTION	QTY
01	9673	CONTROLLER ASSEMBLY (incl:2-3)	1
02	.	HANDLE ASSEMBLY	1
03	.	CONTROL BOX	1
04	12905	VALVE BANK WIRING PIGTAIL	1
05	D0045	ALARM, CAPACITY ALERT	1
06	11191	TERMINAL STRIP 8	1
07	8623	SWITCH, TOGGLE ON/OFF	1
08	C2331	JUNCTION BOX	1
09	C6202	WIRE 14/2 (RED & BLK)	15'
10	C6202	WIRE 14/2 (RED & BLK)	5'
11	11292	BATTERY CHARGER AUTOMOTIVE	1
12	11291	BATTERY 9.6V	1

HYDRAULIC KIT

P/N 11460



23	16675	HOSE-HYD 0.38 X 192	2ref	46	C2142	FTG ADAPT 12-F50LO-S	1
22	16674	HOSE-HYD 0.38 X 22	2ref	46	D1302	FTG MF/MSTR 90 6-10 C50LO-S	1
21	16673	HOSE-HYD 0.75 X 40	1ref	44	C2376	FTG ADAPT 8-C6LO-S	1
20	16672	HOSE-HYD 0.75 X 27	1ref	43	C4227	FTG MF/MSTR 90 8-12 C50LO-S	2
19	16671	HOSE-HYD 0.50 X 38	1ref	42	C5547	FTG ADAPT 6-B C50LO-S	7
18	16670	HOSE-HYD 0.50 X 14	1ref	41	C2248	FTG ADAPT 6 C6LO-S	4
17	16627	HOSE-HYD 0.50 X 24	1ref	40	C1854	FTG ADAPT 6-B F50LO-S	8
16	16493	HOSE-HYD 0.38 X 84	2ref	39	3961	FTG, ELBOW 6815-6-6	1
15	11668	HOSE-HYD 0.38 X 134	1ref	38	16974	PRESSURE SWITCH	1
14	11685	HOSE-HYD 0.38 X 128	1ref	37	9333	SOLENOID VALVE	1
13	11684	HOSE-HYD 0.38 X 66	2ref	36	9334	HIGH PRESSURE FILTER	1
12	11683	HOSE-HYD 0.38 X 78	1ref	36	C1855	FTG ADAPT 6-10 F50LO-S	8
11	11682	HOSE-HYD 0.38 X 48	1ref	34	C0338	FTG ADAPT 6 C50LO-S	8
10	11681	HOSE-HYD 0.38 X 6	1ref	33	0279	FTG ADAPT 6 F50LO-S	8
09	11680	HOSE-HYD 0.38 X 14	1ref	32	1662	FTG TEE 6 JLO-S	1
08	11679	HOSE-HYD 0.38 X 246	4ref	31	D1535	PLUG STR HOLLOW HEX 0.50 8-HP50N	2
07	11678	HOSE-HYD 0.38 X 252	2ref	30	D1311	FTG ADAPT MSTR/FSTR 20-12F50GS	1
06	11676	HOSE-HYD 0.75 X 100	1ref	29	C1180	FTG ADAPT 8-12 F50LO-S	4
05	11675	HOSE-HYD 0.50 X 100	1ref	28	D0525	FTG TEE O'RING F SL 12 R6LO-S	2
04	11674	HOSE-HYD 0.38 X 102	4ref	27	D0165	FTG TEE 8-R6LO-S	1
03	11673	HOSE-HYD 0.38 X 100	4ref	26	C5968	FTG MF/MSTR 90 12-C50LO-S	3
02	11672	HOSE-HYD 0.38 X 106	2ref	25			
01	11671	HOSE KIT 23000/TM1214 (incl:2-23)	1	24			
ITBM	PART No.	DESCRIPTION	QTY	ITEM	PART No.	DESCRIPTION	QTY

Limited Warranty Statement

for Stellar Tire Service Trucks, Truck-mounted Cranes, Truck-mounted Stellarc Welders & Truck-mounted Compressed Air Systems ONLY

Stellar Industries, Inc. (Stellar) warrants products designed and manufactured by Stellar to be free from defects in material and workmanship under proper use and maintenance. Products must be installed and operated in accordance with Stellar's written instructions and stated lifting capacities. The warranty period shall be Twelve (12) month warranty on all Stellar designed and fabricated parts, and Ninety (90) days repair labor.

The warranty period shall begin from the date recorded by Stellar as the in-service date. This date will be derived from the completed warranty registration card. In the event a warranty registration card is not received by Stellar, the factory ship date will be used. Stellar's obligation under this warranty is limited to, and the sole remedy for any such defect shall be, the repair and/or replacement (at Stellar's option) of the part and/or component in question. Stellar after-sales service personnel must be notified by telephone, fax, e-mail, or mail of any warranty-applicable damage within fourteen (14) days of its occurrence. If at all possible, Stellar will ship the replacement part within 24-hours of notification by the most economical, yet expedient, means possible. Expedited freight delivery will be at the expense of the owner.

Warranty claims must be submitted and shall be processed in accordance with Stellar's established warranty claim procedure. Stellar Service personnel must be contacted prior to any warranty claim. A return materials authorization (RMA) account number must be issued to the claiming party prior to the return of any warranty parts. Parts returned without prior authorization will not be recognized for warranty consideration. All damaged parts must be returned to Stellar freight prepaid; freight collect returns will be refused.

Warranty service will be performed by any Stellar new equipment distributor, or by any Stellar-recognized service center authorized to service the type of product involved, or at the Stellar factory. At the time of requesting warranty service, the owner must present evidence of date of delivery of the product. The owner shall be obligated to pay for any overtime labor requested of the servicing company by the owner, any field service call charges, and any towing and/or transportation charges associated with moving the equipment to the designated repair/service provider.

All obligations of Stellar and its authorized dealers and service providers shall be voided if someone other than an authorized Stellar dealer provides other than routine maintenance service without prior written approval from Stellar. In the case repair work is performed on the Stellar-manufactured product, original Stellar parts must be used to keep the warranty in force. The warranty may also be voided if the product is modified or altered in any way not approved, in writing, by Stellar engineering.

The owner/operator is responsible for furnishing proof of the date of original purchase of the Stellar product in question. Warranty registration is the ultimate responsibility of the owner and may be accomplished by the completion and return of the Stellar product registration card provided with the product. If the owner is unsure of registration, he is encouraged to contact Stellar at the address below to confirm registration of the product in question. This warranty covers only defective material and workmanship. It does not cover depreciation or damage caused by normal wear and tear, accident, mishap, untrained operators, or improper or unintended use. The owner has the obligation of performing routine care and maintenance duties as stated in Stellar's written instructions, recommendations, and specifications. Any damage resulting from owner/operator failure to perform such duties shall void the coverage of this warranty. The cost of labor and supplies associated with routine maintenance will be paid by the owner.

The only remedies the owner has in connection with the breach or performance of any warranty on the Stellar product specified are those set above. In no event will Stellar, the Stellar distributor/dealer, or any company affiliated with Stellar be liable for business interruptions, costs of delay, or for any special, indirect, incidental, or consequential costs or damages. Such costs may include, but are not limited to, loss of time, loss of revenue, loss of use, wages, salaries, commissions, lodging, meals, towing, hydraulic fluid, or any other incidental cost.

All products purchased by Stellar from outside vendors shall be covered by the warranty offered by that respective manufacturer only. Stellar does not participate in, or obligate itself to, any such warranty.

Hydraulic cylinders used in Stellar products are subject to the same warranty provisions stated above. Should a cylinder defect develop within the above stated warranty period, notify Stellar immediately. Stellar will ship, freight prepaid, by the most effective, expedient, means a new or re-manufactured cylinder of the same size and type. An authorization for return of the original part will be issued at the time the order is placed. The defective cylinder is to be returned to Stellar freight prepaid by the owner. Cylinders returned freight collect will be refused. Should the defective cylinder not be returned within 30 days of shipping the replacement cylinder, the owner is responsible to pay Stellar the full purchase price of the replacement part.

Stellar reserves the right to make changes in design or improvement upon its products without imposing upon itself the same upon its products theretofore manufactured.

This warranty will apply to all Stellar Tire Service Trucks, Truck-mounted Cranes, Truck-mounted Stellarc Welders & Truck-mounted Compressed Air Systems shipped from Stellar's factory after January 1, 1997. The warranty is for the use of the original owner only and is not transferable without prior written permission from Stellar.

THIS WARRANTY IS EXPRESSLY IN LIEU OF ANY OTHER WARRANTIES, EXPRESS OR IMPLIED, INCLUDING ANY WARRANTY OF MERCHANTABILITY OR FITNESS FOR A PARTICULAR PURPOSE. REMEDIES UNDER THIS WARRANTY ARE LIMITED TO THE PROVISION OF MATERIAL AND SERVICES, AS SPECIFIED HEREIN. STELLAR INDUSTRIES, INC. IS NOT RESPONSIBLE FOR INCIDENTAL OR CONSEQUENTIAL DAMAGES.

Stellar Industries, Inc. • 280 West Third Street • Garner, Iowa 50438 • U.S.A.

E-Mail • sales@stellar-industries.com

Telephone: 800/321-3741; 641/923-3741 • Fax: 641/923-2812; 641/923-2811

Revised 10/05/2000