



CRANE

MODEL 28000

280 W. 3rd St., Box 169 • Garner, IA 50438 • Phone: 641-923-3741 • Fax: 641-923-2812

UPDATED 05/02/05

TABLE OF CONTENTS
STELLAR CRANE 28,000

SPECIFICATION SHEET3

CAPACITY CHART4

CRANE OPERATION5

MANUAL CRANE OPERATION6

BASE ASSEMBLY7

OUTRIGGER ASSEMBLY.....8

MAST ASSEMBLY9

MAIN BOOM ASSEMBLY.....10

MAIN BOOM ASSEMBLY.....11

EXTENSION BOOM ASSEMBLY12

INSTALLATION KIT.....13

OIL TANK ASSEMBLY WITHOUT HEATER.....14

OIL TANK ASSEMBLY WITH HEATER15

CONTROL KIT RADIO CONTROL16

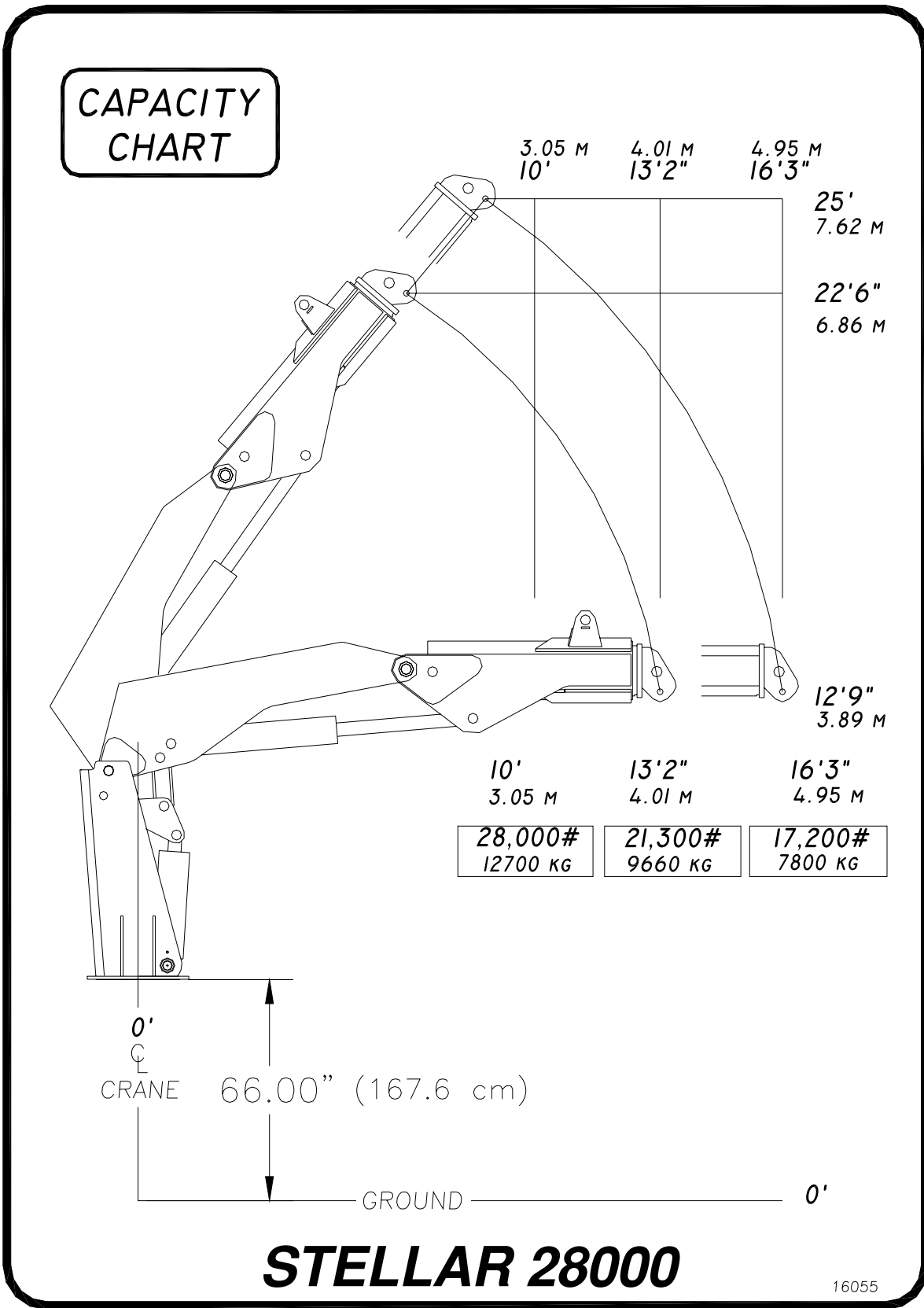
HYDRAULIC KIT17

DECAL KIT18

SPECIFICATION SHEET

Crane Rating	280,000 ft-lbs(38.71 ton-meters)
Standard Boom Length	13' 2"(4.01 m)-from CL of Crane
Boom Extension	Hydraulic 37"(94.0 cm)
Maximum Horizontal Reach	16' 3"(4.95 m)-from CL of Crane
Maximum Vertical Lift (from truck frame)	25'(7.62 m)
Inner Lift Cylinder	9"(22.9 cm) bore with integral pilot operated counterbalance valves.
Outer Lift Cylinder	7"(17.8 cm) bore with integral pilot operated counterbalance valves.
Extension Cylinder	6"(15.2 cm) bore with integral pilot operated counterbalance valves.
Rotation	315 degree power (planetary gear with pinion)
Lifting Capacities	28,000 lbs @ 10' (12700 kg @ 3.05 m) 21,300 lbs @ 13' 2" (9660 kg @ 4.01 m) 17,200 lbs @ 16' 3" (7800 kg @ 4.95 m)
Power Supply Required	PTO & Pump (16 gpm @ 4200 psi) (60.6 lpm @ 290 bars)
Controls	Fully proportional paddle controls for all functions
Stowed Height (Above truck frame)	114 inches (289.6 cm)
Mounting Space Required	48 inches (121.9 cm)
Approximate Shipping Weight	13,000 pounds (5895 kg)

CAPACITY CHART



CRANE OPERATION

CRANE OPERATION

THIS CRANE IS CONTROLLED BY AN ELECTRONICALLY OPERATED VALVE BANK. THE CONTROLLER FOR THIS VALVE IS SHOWN BELOW.

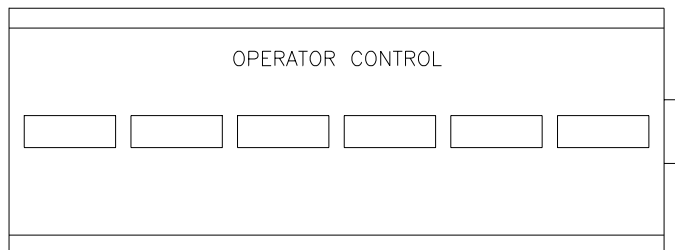
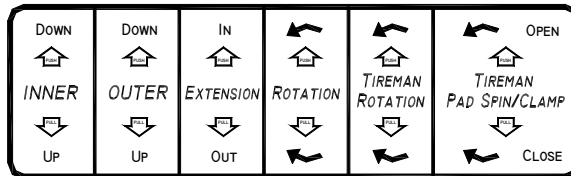
THE FUNCTIONS THAT IT CONTROLS ARE AS FOLLOWS:

- INNER BOOM UP & DOWN
- OUTER BOOM UP & DOWN
- EXTENSION BOOM IN & OUT
- ROTATION CW & CCW
- TIREMAN CLAMP
- TIREMAN ROTATION

THIS IS A FULLY PROPORTIONAL HYDRAULIC SYSTEM.

TO OPERATE A FUNCTION, PUSH OR PULL THE PADDLE A DESIRED DISTANCE TO VARY THE SPEED.

NOTE: IN THE EVENT THAT CRANE HYDRAULICS WILL NOT OPERATE WITH THE HANDLE, USE THE MANUAL OVERRIDES LOCATED ON THE VALVE BANK



MANUAL CRANE OPERATION

To operate the crane by using the manual control functions, follow the steps below:

1. Locate the switch on the crane base labeled manual/remote.



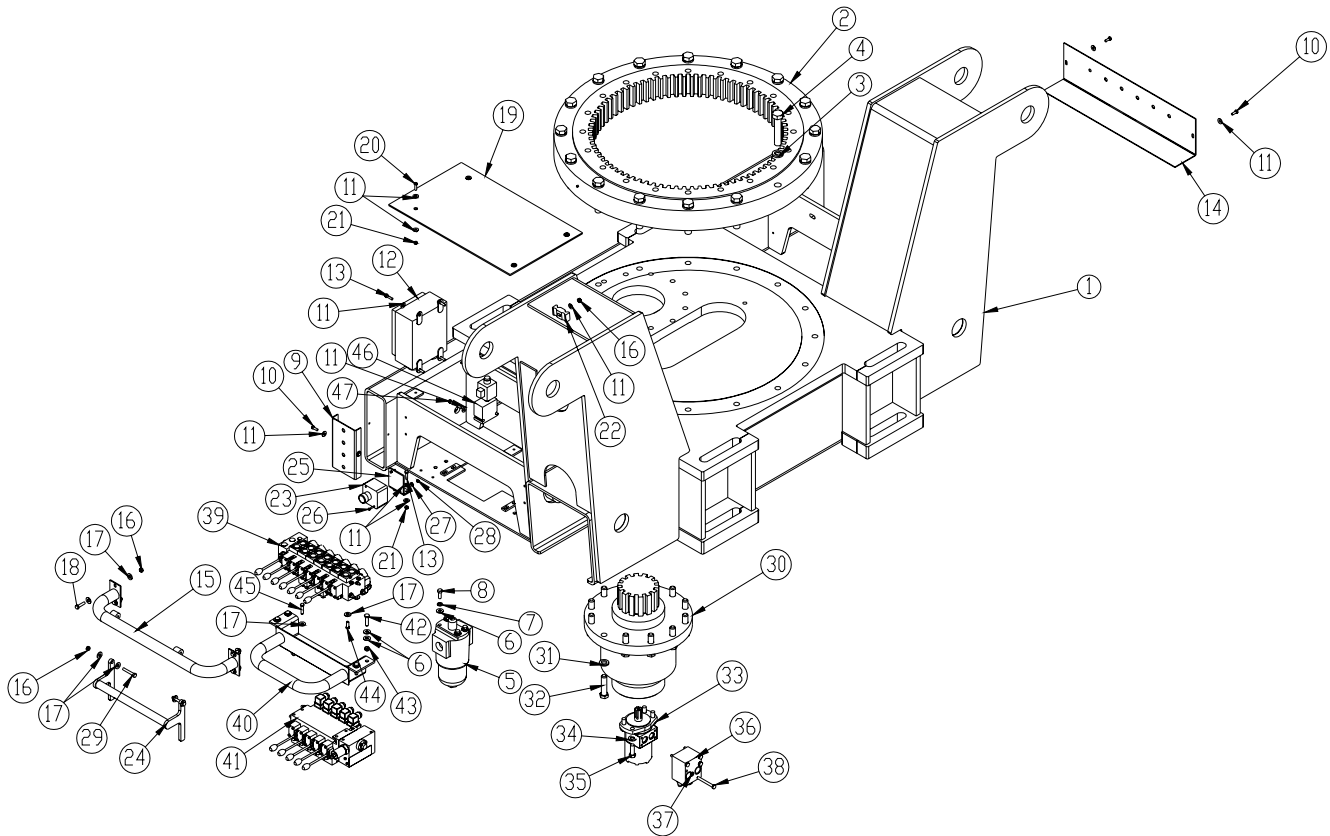
2. Switch to the manual position.
3. Operate the crane functions using the handles located on the 7-section valve stack located on the crane base. Use decal located above the valve stack to identify the handle functions.

UP	UP	↶	OUT	↶	CLOSE	↶
↑	↑	↑	↑	↑	↑	↑
INNER	OUTER	ROTATION	EXTENSION	TIREMAN ROTATION	TIREMAN CLAMP	TIREMAN PAD SPIN
DOWN	DOWN	↷	IN	↷	OPEN	↷
↓	↓	↓	↓	↓	↓	↓
USE MANUAL CONTROLS ONLY IN CASE OF RADIO CONTROL FAILURE. ACTIVATE WITH MANUAL OVERRIDE SWITCH.						

4. Return the manual/remote switch to the remote mode to operate via the radio control.

BASE ASSEMBLY

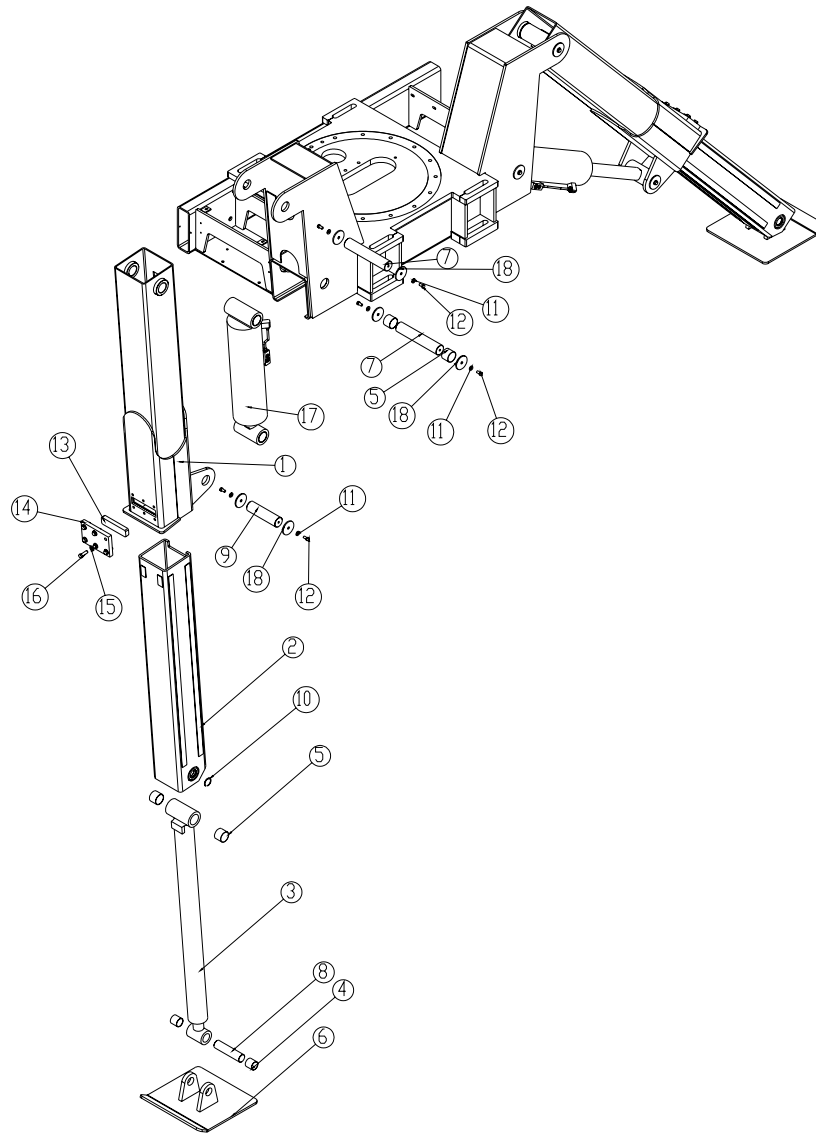
P/N 18070



ITEM	PART	DESCRIPTION	QTY.	ITEM	PART	DESCRIPTION	QTY.
1	33294	BASE 28000 96	1	25	22918	BRACKET E-STOP 28000	1
2	18471	TURNTABLE BEARING 23000	1	26	22183	CAP SCR #8-32X0.75 BTNHD SS	2
3	18041	WASHER 0.88 SAE FLAT YELLOW GR9	16	27	22185	WASHER 0.19 FLAT SS	2
4	17962	CAP SCR 0.88-9X4.50 HHGR9 ZY	16	28	22186	NUT #8-32 HH NYLOC SS	2
5	9334	FILTER PRESSURE 15000 CRANE	1	29	0488	CAP SCR 0.31-18X2.00 HHGR5	2
6	0346	WASHER 0.38 FLAT	12	30	22929	GEARBOX PLANETARY 28000	1
7	0523	WASHER 0.38 LOCK	4	31	C6219	WASHER 0.75 SAE FLAT YELLOW GR8	12
8	11691	CAP SCR 0.38-24X1.00 HHGR8	4	32	C1028	CAP SCR 0.75-10X3.00 HHGR8 ZY	12
9	15407	PLATE SWITCH MTG 28000	1	33	22934	MOTOR HYD ROSS MG082511AAAB	1
10	0479	CAP SCR 0.25-20X0.75 HHGR5	4	34	D0790	WASHER 0.50 FLAT GR8	4
11	0340	WASHER 0.25 FLAT	24	35	10548	CAP SCR 0.50-13X1.50 HHGR8	4
12	13390	RECEIVER OMNEX RADIO	1	36	22935	VALVE BLOCK CBCA-LAN-XTS	1
13	0480	CAP SCR 0.25-20X1.00 HHGR5	6	37	5591	WASHER 0.31 SAE FLAT YELLOW GR8	4
14	11689	PLATE SWITCH MTG 23000 CRANE	1	38	C0930	CAP SCR 0.31-18X3.00 HHGR5	4
15	16501	GUARD VB 28000	1	39	30837	VB 7 SECT HAWE 2H1/200-2	1
16	0342	NUT 0.31-18 HH NYLOC	8	40	31668	BRACKET MNT WLDMT VB5 28000	1
17	0343	WASHER 0.31 USS FLAT ZINC	20	41	30838	VB 5 SECT HAWE PSL4Y1/200-3-ZPL 32	1
18	0485	CAP SCR 0.31-18X1.25 HHGR5	4	42	0345	CAP SCR 0.38-16X1.50 HHGR5	4
19	16606	PLATE COVER 28000	1	43	0347	NUT 0.38-16 HH NYLOC	4
20	C6022	CAP SCR 0.25-20X1.00 BTNHD SS	4	44	31777	CAP SCR 8MMX22MM HHGR5	4
21	0333	NUT 0.25-20 HHGR5 NYLOC	6	45	31778	CAP SCR 8MMX35MM HHGR5	4
22	8621	CLAMP HOSE/TUBE AG-3	2	46	9333	SOLENOID VALVE	1
23	22921	E-STOP PANIC BAR 28000	1	47	0481	CAP SCR 0.25-20X2.00 HHGR5	2
24	22917	BAR PANIC 28000	7				

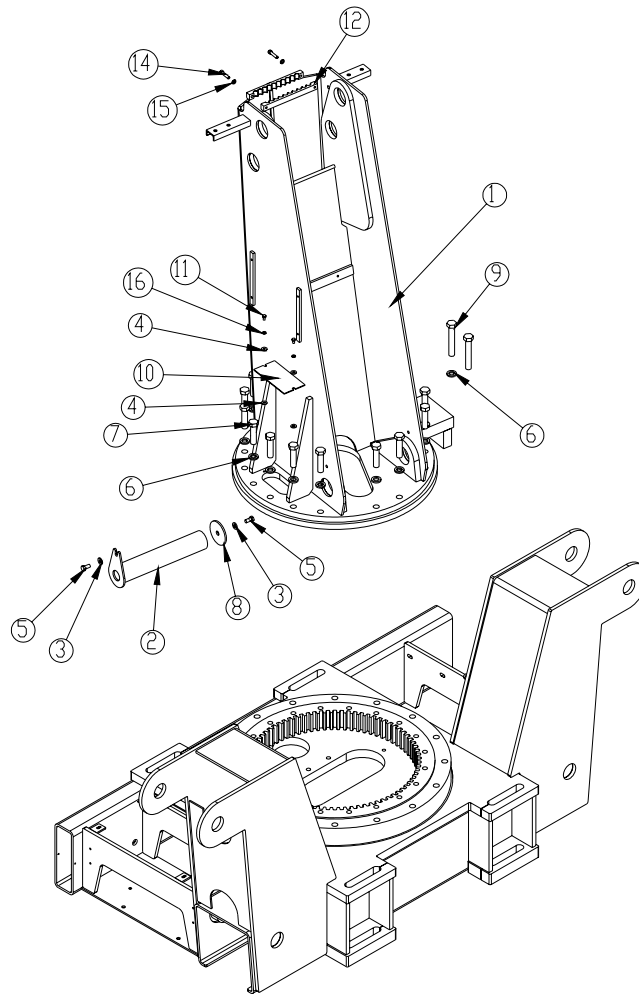
OUTRIGGER ASSEMBLY

P/N 18072



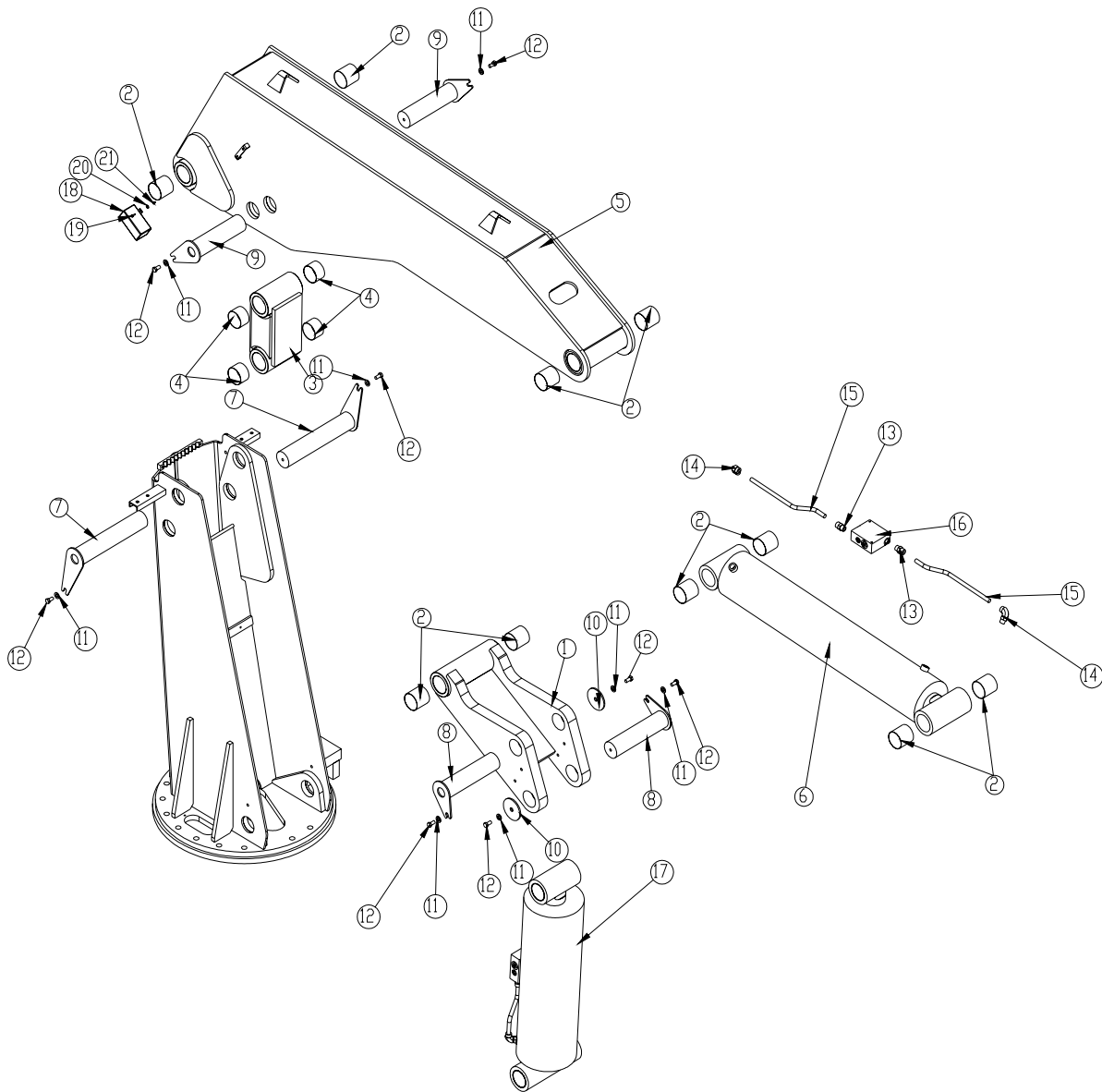
ITEM	PART	DESCRIPTION	QTY.	ITEM	PART	DESCRIPTION	QTY.
1	15504	OUTRIGGER 28000	2	12	10172	CAP SCR 0.50-13X1.00 HHGR8 ZY	12
2	15502	OUTRIGGER LEG 28000	2	13	10179	WEAR PAD OUTRIGGER 23000	2
3	9994	CYLINDER 4.00X50.00	2	14	10180	COVER WEAR PAD 23000	2
4	4381	BUSHING 32DXR32 2.00X2.00 GARLOCK	4	15	C5902	WASHER 0.63 FLAT GR8	12
5	0635	BUSHING 40DXR32 GARLOCK	8	16	C1025	CAP SCR 0.63-11X2.00 HHGR8 ZY	12
6	9969	OUTRIGGER PAD 23000	2	17	19031	CYLINDER ASM 9993	2
7	9995	PIN 2.50X13.38 D&T	4	18	8377	PIN CAP 0.56X3.50X.25	12
8	9997	PIN 2.00X8.25	2	19	8621	CLAMP HOSE/TUBE AG-3	2
9	9996	PIN 2.50X9.38 D&T	2	20	0340	WASHER 0.25 FLAT	2
10	2257	SNAP RING INSIDE 2.00	4	21	0342	NUT 0.31-18 HH NYLOC	2
11	D0790	WASHER 0.50 FLAT GR8	12				

MAST ASSEMBLY P/N 18073



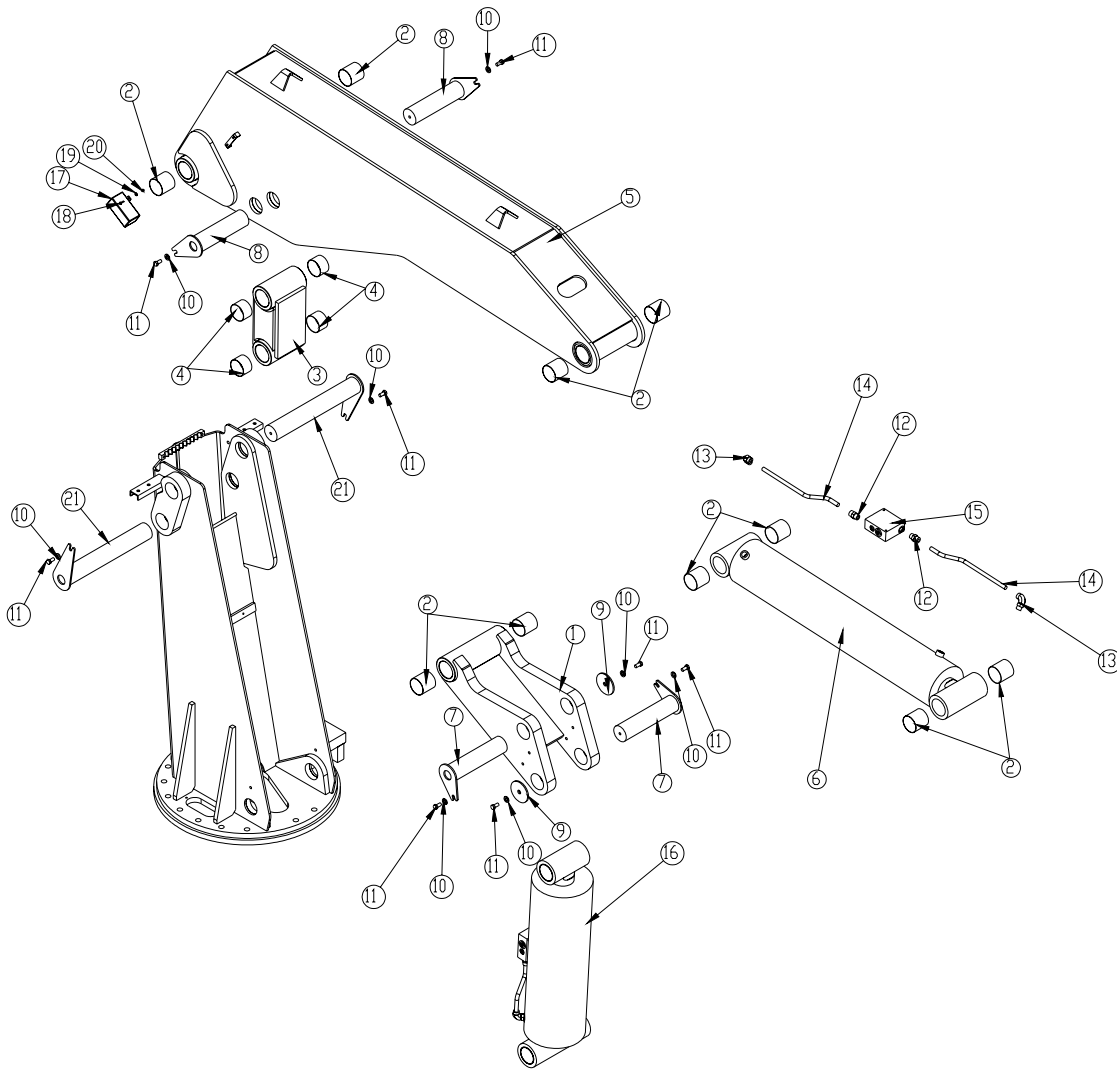
ITEM	PART	DESCRIPTION	QTY.
1	15403	MAST 28000	1
2	15755	TEAR DROP PIN 3.00X16.13	1
3	D0790	WASHER 0.50 FLAT GR8	2
4	0343	WASHER 0.31 FLAT	4
5	10172	CAP SCR 0.50-13X1.00 HHGR8 ZY	2
6	18041	WASHER 0.88 SAE FLAT YELLOW GR9	18
7	17963	CAP SCR 0.88-9X3.50 HHGR9 ZY	16
8	8597	PIN CAP 0.69x4.00x0.25 SS	1
9	17964	CAP SCR 0.88-9X5.50 HHGR8	2
10	11297	PLATE INSPECTION MAST 23000	1
11	0484	CAP SCR 0.31-18 X 0.50 HHGR5	2
12	17133	HOSE CLAMP 28000	1
14	11882	CAP SCR 0.38-16X1.75 SH ZC	2
15	0523	WASHER 0.38 LOCK	2
16	0522	WASHER 0.31 LOCK	2

MAIN BOOM ASSEMBLY P/N 18074(BEFORE 10/11/04)



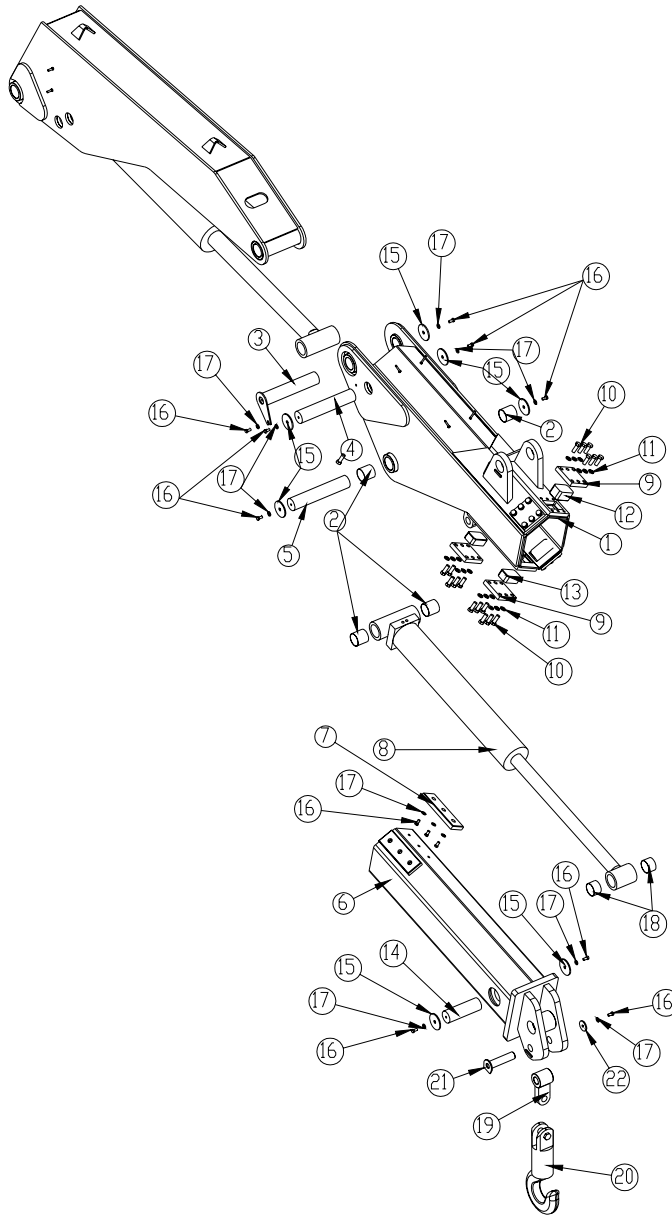
ITEM	PART	DESCRIPTION	QTY.	ITEM	PART	DESCRIPTION	QTY.
1	15495	LINK MAIN 28000	1	12	10172	CAP SCR 0.50-13X1.00 HHGR8 ZY	8
2	2227	BUSHING 48DXR48 GARLOCK	10	13	16152	FTG ADAPT 10-F5OLO-S	2
3	15497	LINK WLDMT 28000 MAIN	1	14	16153	FTG ADAPT 10-C5OLO-S	2
4	0865	BUSHING 48DXR32 GARLOCK	4	15	16158	TUBE ASM 0.63X16.09	2
5	15398	INNER BOOM 28000	1	16	15995	MANIFOLD ASM DUAL T2A 5000PSI	1
6	15604	CYLINDER 7.00X38.25	1	17	20694	CYLINDER ASM 28000 MAST	1
7	15758	TEAR DROP PIN 3.00X16.13	2	18	28833	LOAD MOMENT INDICATOR CERG	1ref
8	15763	TEAR DROP PIN 3.00X12.63	2	19	D0894	SCREW #10-24X0.75 BTN HD SS	2
9	15760	TEAR DROP PIN 3.00X11.63	2	20	D0178	WASHER #10 SAE FLAT ZINC	2
10	8597	PIN CAP 0.69x4.00x0.25 SS	2	21	26034	NUT #10-24 HH NYLOC	2
11	D0790	WASHER 0.50 FLAT GR8	8				

MAIN BOOM ASSEMBLY P/N 18074(AFTER 10/11/04)



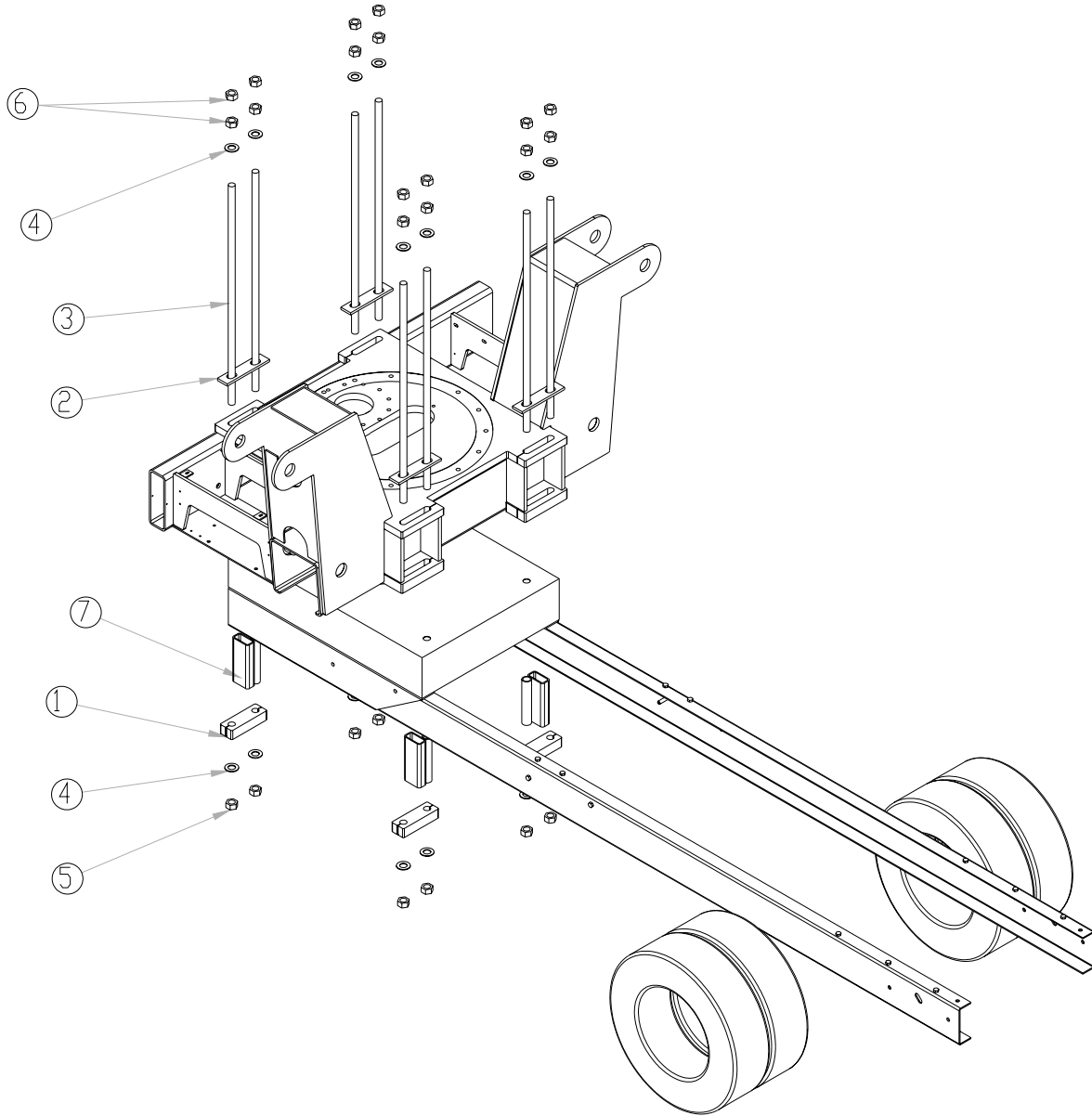
ITEM	PART	DESCRIPTION	QTY.	ITEM	PART	DESCRIPTION	QTY.
1	15495	LINK MAIN 28000	1	12	16152	FTG ADAPT 10-F5OLO-S	2
2	2227	BUSHING 48DXR48 GARLOCK	10	13	16153	FTG ADAPT 10-C5OLO-S	2
3	15497	LINK WLDMT 28000 MAIN	1	14	16158	TUBE ASM 0.63X16.09	2
4	0865	BUSHING 48DXR32 GARLOCK	4	15	15995	MANIFOLD ASM DUAL T2A 5000PSI	1
5	15398	INNER BOOM 28000	1	16	20694	CYLINDER ASM 28000 MAST	1
6	15604	CYLINDER 7.00X38.25	1	17	28833	LOAD MOMENT INDICATOR CERG	1
7	15763	TEAR DROP PIN 3.00X12.63	2	18	D0894	SCREW #10-24X0.75 BTN HD SS	2
8	15760	TEAR DROP PIN 3.00X11.63	2	19	D0178	WASHER #10 SAE FLAT ZINC	2
9	8597	PIN CAP 0.69x4.00x0.25 SS	2	20	26034	NUT #10-24 HH NYLOC	2
10	D0790	WASHER 0.50 FLAT GR8	8	21	31056	TEAR DROP PIN 3.00X20.13	2
11	10172	CAP SCR 0.50-13X1.00 HHGR8 ZY	8				

EXTENSION BOOM ASSEMBLY P/N 18075



ITEM	PART	DESCRIPTION	QTY.	ITEM	PART	DESCRIPTION	QTY.
1	15393	OUTER BOOM 28000	1	12	15778	WEAR PAD 3.00X5.00X2.44	2
2	2227	BUSHING 48DXR48 GARLOCK	4	13	15779	WEAR PAD 3.00X5.00X1.75	4
3	15765	TEAR DROP PIN 3.00X15.38	1	14	15769	PIN 3.00X9.13 D&T	1
4	34802	PIN 3.00X15.38 D&T	1	15	8597	PIN CAP 0.69x4.00x0.25 SS	7
5	15768	PIN 3.00X15.88 D&T	1	16	10172	CAP SCR 0.50-13X1.00 HHGR8 ZY	15
6	15388	EXT BOOM 28000	1	17	D0790	WASHER 0.50 FLAT GR8	15
7	15601	WEAR PAD 1.00X4.00X12.00	2	18	0865	BUSHING 48DXR32 GARLOCK	2
8	15608	CYLINDER 6.00x37.00	1	19	16054	SWIVEL LINK 28000 CRANE	1
9	15609	PLATE WEAR PAD COVER 28000	6	20	16052	HOOK 15 TON SWIVEL 297814	1
10	4543	CAP SCR 0.75-10X2.00 HHGR8 ZY	36	21	16028	PIN TEAR DROP 1.75X7.06	1
11	C6219	WASHER 0.75 SAE FLAT YELLOW GR8	36	22	9142	PIN CAP 0.56X2.50X.25	1

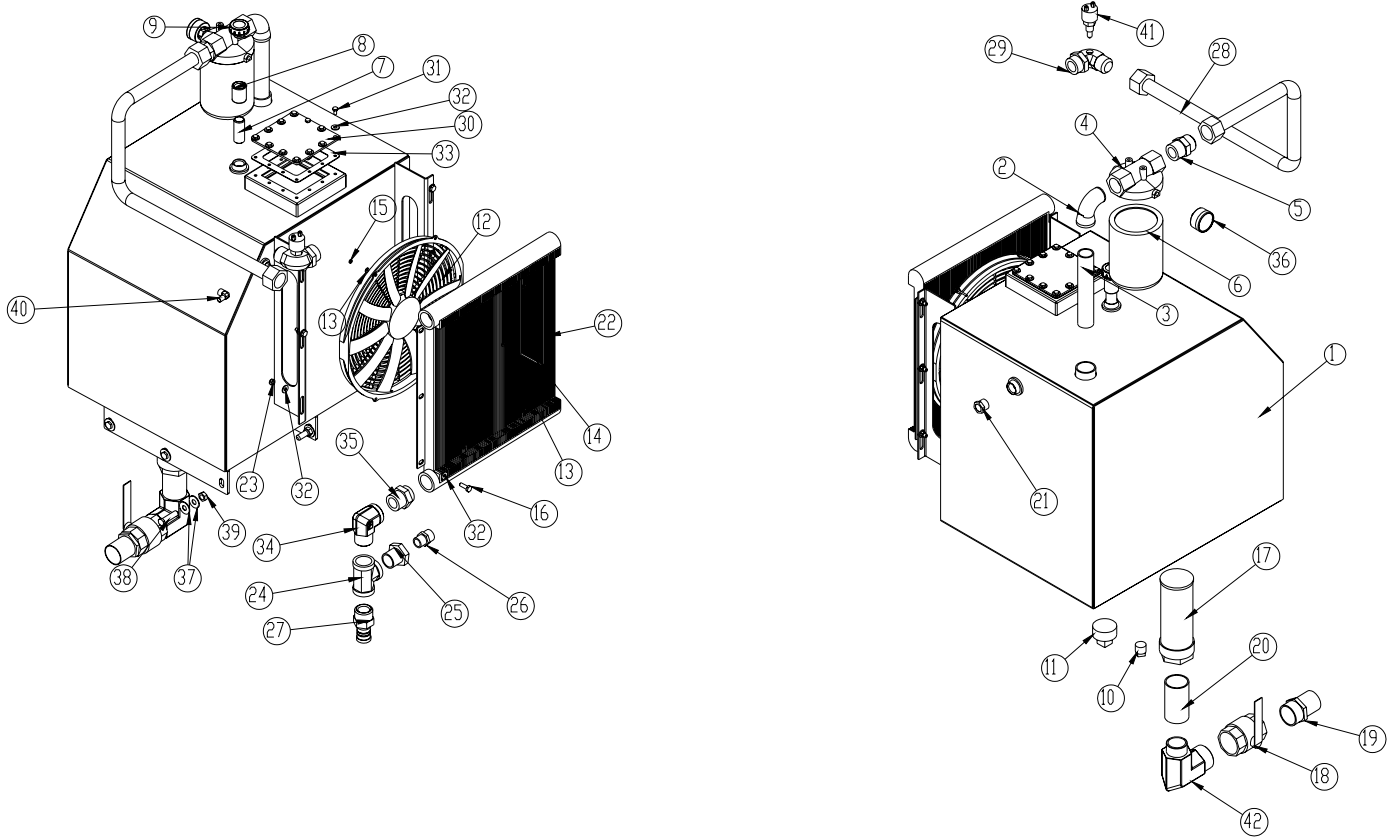
INSTALLATION KIT P/N 16659



ITEM	PART	DESCRIPTION	QTY.	ITEM	PART	DESCRIPTION	QTY.
1	8054	MTG BLOCK 15000	4	5	8834	NUT 1.25-7 HHGR8 TOP LOCKING	8
2	11677	PLATE MOUNTING 23000	4	6	8978	NUT 1.25-7 HHGR8	16
3	14498	TIE DOWN ROD	8	7	8202	FRAME SUPPORT 15000 CRANE	4
4	9180	WASHER 1.25 SAE FLAT YELLOW GR8	16				

OIL TANK ASSEMBLY WITHOUT HEATER

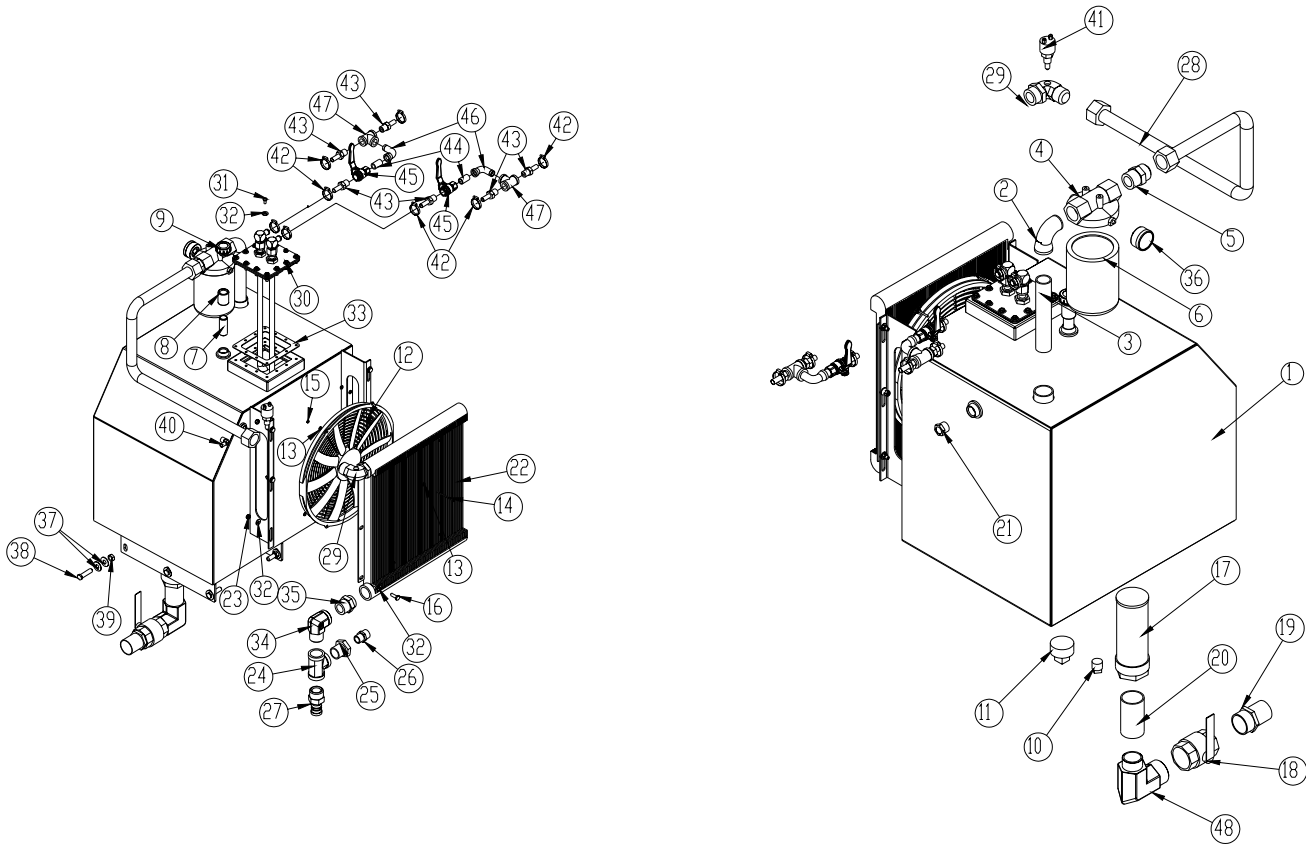
P/N 14296



ITEM	PART	DESCRIPTION	QTY.	ITEM	PART	DESCRIPTION	QTY.
1	10014	OIL TANK 45GAL	1	22	8240	COOLER OIL BLISSFIELD #65155SPECIAL	1
2	C4694	ST EL 1.25 90 DEG BLK	1	23	0342	NUT 0.31-18 HH NYLOC	6
3	C4745	NIPPLE 1.25X8.00 BLK PIPE	1	24	C6170	TEE 1.25 STL	1
4	C6228	FILTER HEAD SF120-25 1.3	1	25	C2375	FTG REDU 0102-20-12	1
5	10098	FTG MJIC/MNPT 20-FTX	1	26	C4952	FTG ADAPT 12 FLO-S	1
6	C6225	FILTER LARGE SE-10	1	27	C2282	FTG 1.25 NPT TO 1.25 BARB	1
7	C1053	NIPPLE 0.75X2.50 BLK PIPE	1	28	10964	TUBE ASM 1.25 CLR TO RSRVR 15000	1
8	C5930	COUPLER 0.75 BLK	1	29	24910	FTG MJIC/MSTR 90 20-C5OX MOD	1
9	C2151	CAP FILLER BREATHER	1	30	11442	PLATE COVER TANK HEATER FLANGE	1
10	C2126	MAGNETIC PLUG DRAIN 3/4"	1	31	0478	CAP SCR 0.25-20X0.50 HHGR5	12
11	C4847	PLUG 2.00 NPT SQ HD BLK	1	32	0340	WASHER 0.25 FLAT	24
12	8241	FAN 16.00 PUSH 12 VOLT	1	33	11149	GASKET ARCTIC FOX HEATER #A-611	1
13	5290	WASHER #8 SAE FLAT ZP	8	34	c6152	ST EL 1.25 90 DEG STL	1
14	D0075	SCREW #6-32X2.75 RH HD MACHINE	4	35	10957	FTG MJIC/MNPT 20-FTX	1
15	D0076	NUT #6-32 HH NYLOC	4	36	16145	GAUGE PRES FILTER SERVICE CI20	1
16	C0922	CAP SCR 0.31-18X1.00 HHGR5	6	37	0519	WASHER 0.44 USS FLAT ZINC	12
17	C6327	FILTER STRAINER 35GAL TF-2030	1	38	0501	CAP SCR 0.50-13X2.00 HHGR5	6
18	C4750	VALVE BALL 2.00	1	39	C6106	NUT 0.50-13 HHGR5 NYLOC	6
19	C4730	FTG HOSE BARB 2.00	1	40	D1263	FTG HOSE BARB 0.38 HOSE X 0.38 90DG	1
20	D1218	NIPPLE 2.00X6.00 BLK	1	41	D1862	SWITCH TEMP HT-2A-100R-.38NPT 25A	1
21	C4955	SIGHT GAUGE 3/4 NPT EYE	1	42	D0652	ST EL 2.00 90 DEG STL	1

OIL TANK ASSEMBLY WITH HEATER

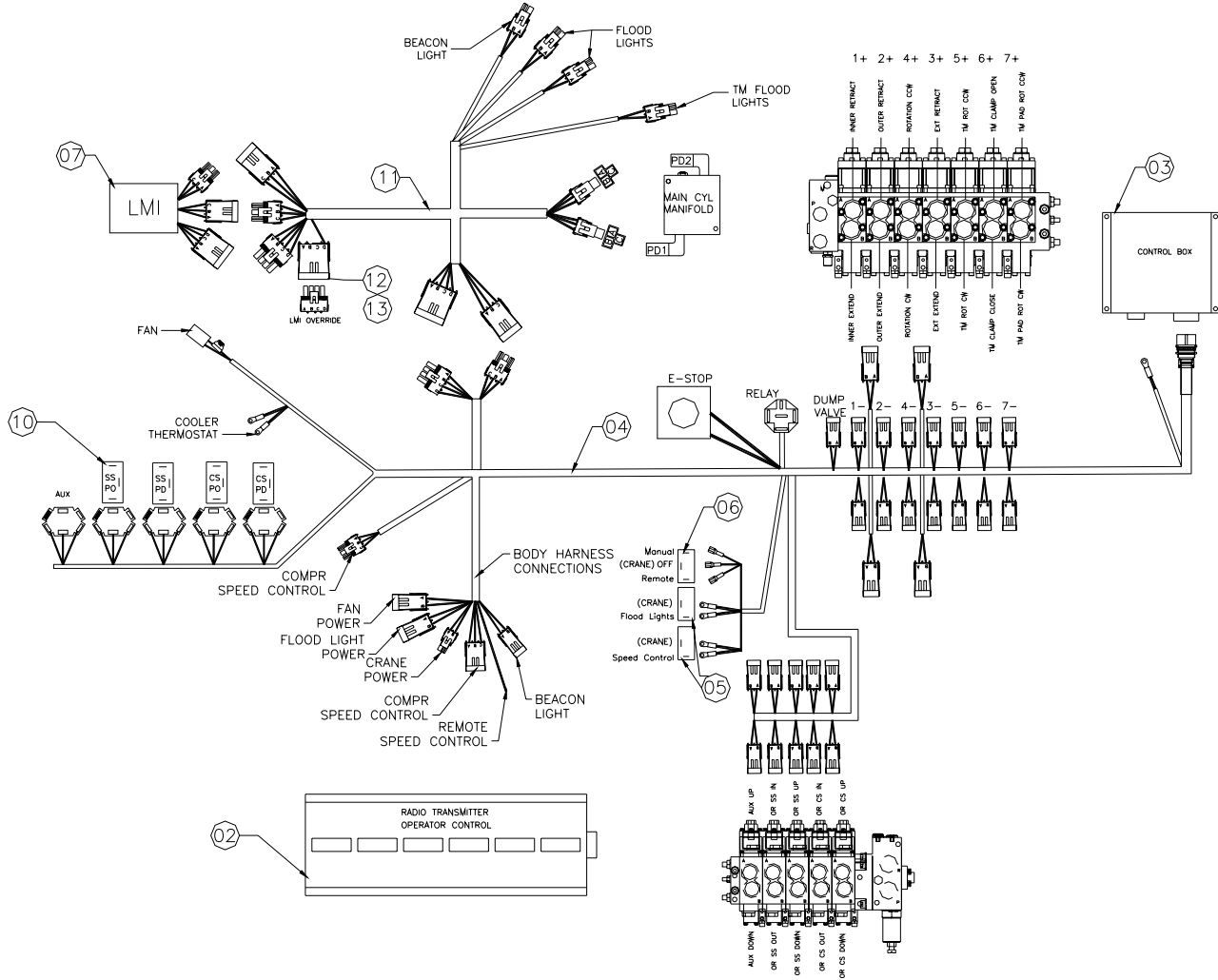
P/N 14297



ITEM	PART	DESCRIPTION	QTY.	ITEM	PART	DESCRIPTION	QTY.
1	10014	OIL TANK 45GAL	1	25	C2375	FTG REDU 0102-20-12	1
2	C4694	ST EL 1.25 90 DEG BLK	1	26	C4952	FTG ADAPT 12 FLO-S	1
3	C4745	NIPPLE 1.25X8.00 BLK PIPE	1	27	C2282	FTG 1.25 NPT TO 1.25 BARB	1
4	C6228	FILTER HEAD SF120-25 1.3	1	28	10964	TUBE ASM 1.25 CLR TO RSRVR 15000	1
5	10098	FTG MJIC/MNPT 20-FTX	1	29	24910	FTG MJIC/MSTR 90 20-C5OX MOD	1
6	C6225	FILTER LARGE SE-10	1	30	11147	HEATER TANK ARCTIC FOX #F-203-29	1
7	C1053	NIPPLE 0.75X2.50 BLK PIPE	1	31	478	CAP SCR 0.25-20X0.50 HHGR5	12
8	C5930	COUPLER 0.75 BLK	1	32	340	WASHER 0.25 FLAT	24
9	C2151	CAP FILLER BREATHER	1	33	11149	GASKET ARCTIC FOX HEATER #A-611	1
10	C2126	MAGNETIC PLUG DRAIN 3/4"	1	34	c6152	ST EL 1.25 90 DEG STL	1
11	C4847	PLUG 2.00 NPT SQ HD BLK	1	35	10957	FTG MJIC/MNPT 20-FTX	1
12	8241	FAN 16.00 PUSH 12 VOLT	1	36	16145	GAUGE PRES FILTER SERVICE CI20	1
13	5290	WASHER #8 SAE FLAT ZP	8	37	519	WASHER 0.44 USS FLAT ZINC	12
14	D0075	SCREW #6-32X2.75 RH HD MACHINE	4	38	501	CAP SCR 0.50-13X2.00 HHGR5	6
15	D0076	NUT #6-32 HH NYLOC	4	39	C6106	NUT 0.50-13 HHGR5 NYLOC	6
16	C0922	CAP SCR 0.31-18X1.00 HHGR5	6	40	D1263	FTG HOSE BARB 0.38 HOSE X 0.38 90DG	1
17	C6327	FILTER STRAINER 35GAL TF-2030	1	41	D1862	SWITCH TEMP HT-2A-100R-.38NPT 25A	1
18	C4750	VALVE BALL 2.00	1	42	C4665	HOSE CLAMP #8 SS	8
19	C4730	FTG HOSE BARB 2.00	1	43	C2278	FTG HOSE BARB 0.50 HOSE X 0.50 MNPT	6
20	D1218	NIPPLE 2.00X4.00 BLK	1	44	4583	NIPPLE 0.50XCLOSE BRASS 40-060	2
21	C4955	SIGHT GAUGE 3/4 NPT EYE	1	45	4446	VALVE BALL 0.50 BRONZE APOLLO	2
22	8240	COOLER OIL BLISSFIELD #65155SPECIAL	1	46	5417	FTG .50X90 DEG ST EL BRASS 44163	2
23	342	NUT 0.31-18 HH NYLOC	6	47	5420	FTG 0.50-TEE BRASS	2
24	C6170	TEE 1.25 STL	1	48	D0652	ST EL 2.00 90 DEG STL	1

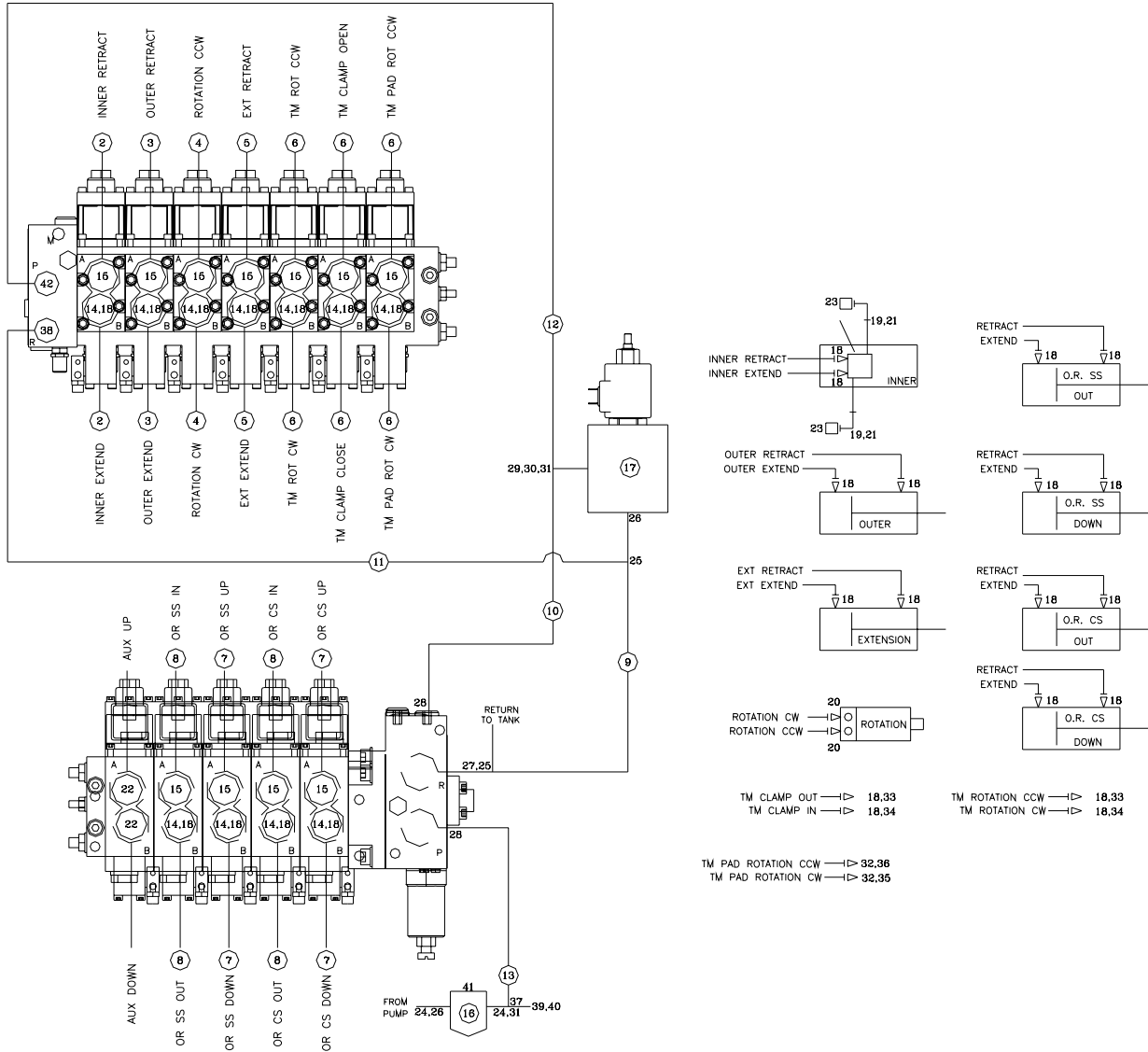
CONTROL KIT RADIO CONTROL

P/N 16505



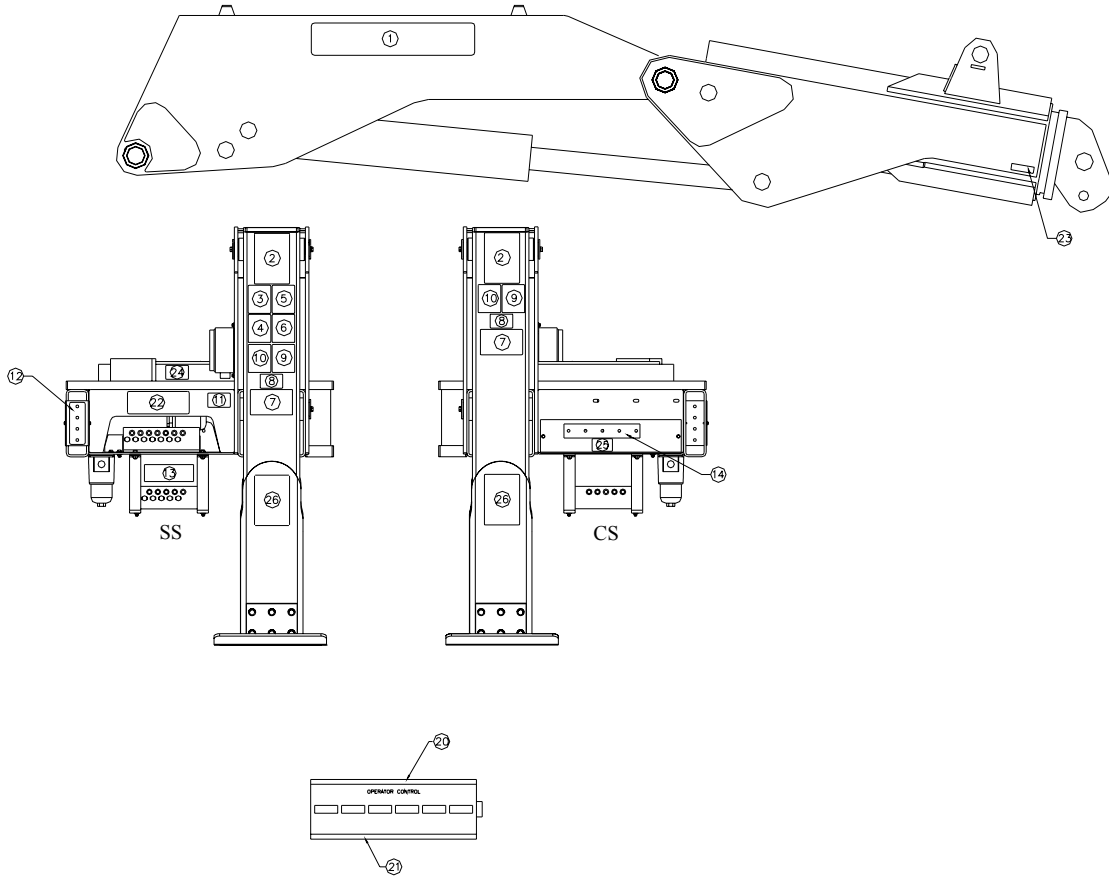
ITEM	PART No.	DESCRIPTION	QTY
01	9673	CONTROLLER ASSEMBLY (incl:2-3)	1
02	13976	HANDLE ASSEMBLY	1ref
03	13390	CONTROL BOX	1ref
04	31781	WIRE HARNESS 28000 CRANE	1
05	C4815	SWITCH, TOGGLE ON/OFF	2
06	8823	SWITCH TOGGLE ON-OFF-ON SGL P DBL T	1
07	28833	LOAD MOMENT INDICATOR SYSTEM	1
08	11292	BATTERY CHARGER AUTOMOTIVE	1
09	11291	BATTERY 9.6V	1
10	6394	SWITCH TOGGLE MOM/ON/OFF/ON	4
11	31782	WIRE HARNESS 28000 LMI&LIGHTS	1
12	8385	CONNECT 4 PIN TOWER PACKARD	1
13	9767	PLUG CAVITY 39010 PACKARD	4
14			
15			

HYDRAULIC KIT P/N 15775



22	D1535	PLUG STR HOLLOW HEX 0.50 8-HP50N	2					
21	15111	FTG ADAPT MSH/FSFH 6-4-F50G5	2					
20	C1865	FTG ADAPT 6-10 F50LO-S	2	42	1554	FTG ADAPT 8-F50LO-S		1
19	3861	FTG MSTR/FNPT 6-1/4	2	41	31527	PLUG BSPP HEX 0.50 8P470MNS		1
18	C1854	FTG ADAPT 6-8 F50LO-S	29	40	6397	GAUGE OIL LF 2.5 0-5000 CBM		1
17	9333	SOLENOID VALVE	1ref	39	30541	FTG ML O'RING/FM PIPE 6405-12-04		1
16	9334	HIGH PRESSURE FILTER	1ref	38	7344	FTG ADAPT 12-8 F50LO-S		1
15	C5547	FTG ADAPT 6-8 C50LO-S	11	37	C4227	FTG MF/MSTR 90 8-12 C50LO-S		1
14	C2248	FTG ADAPT 6 C6LO-S	11	36	13555	QUICK COUPLER 2FF114-38SAE-M		1
13	26731	HOSE-HYD 0.50X 18.00	1ref	35	13554	QUICK COUPLER 2FF114-38SAE-F		1
12	16626	HOSE-HYD 0.50X 26.00	1ref	34	13556	QUICK COUPLER 2FFN38-12SAE-F		2
11	31664	HOSE-HYD 0.75X 16.00	1ref	33	13557	QUICK COUPLER 2FFN38-12SAE-M		2
10	13169	HOSE-HYD 0.50 X 16.00	1ref	32	0279	FTG ADAPT 6-F50LO-S		2
09	31665	HOSE-HYD 0.75X 12.00	1ref	31	30542	FTG ST RUN TEE ML O'RING/FM ST 0.75		1
08	16493	HOSE-HYD 0.38X B4	4ref	30	D0165	FTG TEE 8-R6LO-S		1
07	11674	HOSE-HYD 0.38 X 102	4ref	29	C2053	FTG ADAPT MSTR/FSTR 12-8 F50G5-S		1
06	16663	HOSE-HYD 0.38 X 288	6ref	28	31659	FTG MF/MBSP 8-12 F42EDMLOS		2
05	15729	HOSE-HYD 0.38 X 240	2ref	27	31658	FTG MF/MBSP 12 F42EDMLOS		1
04	16662	HOSE-HYD 0.38 X 42	2ref	26	C2142	FTG ADAPT ML O'RING/ML 12-F50LO-S		2
03	16661	HOSE-HYD 0.38 X 180	2ref	25	D0525	FTG TEE O'RING F SL 12 R6LO-S		2
02	14872	HOSE-HYD 0.38 X 72	2ref	24	D1311	FTG ADAPT MSTR/FSTR 20-12F50G5		2
01	15767	HOSE KIT,28000 CRANE (incl:2-12)	1	23	28485	TRANSDUCER PRESSURE 5000 PSI		2
ITEM	PART No.	DESCRIPTION	QTY	ITEM	PART No.	DESCRIPTION	QTY	

DECAL KIT



ITEM NO.	PART NO.	DESCRIPTION	QTY.	ITEM NO.	PART NO.	DESCRIPTION	QTY.
1	16336	DECAL IDENTIFICATION 28000	2	14	16619	DECAL SWITCH PANEL 28000	1
2	16055	DECAL CAPACITY 28000	2	15	C4545	DECAL DANGER ELECTROCUTION	4
3	C4540	DECAL DANGER	1	16	8998	DECAL AIR DRAIN	1
4	4189	DECAL DANGER OPERATION RESTRICTION	1	17	8843	DECAL EXPLODING TANK	1
5	C4544	DECAL CAUTION	1	18	C5911	DECAL STELLAR LOGO 2.00X4.50	2
6	4190	DECAL DANGER OPERATION CONDITION	1	19	C5910	DECAL STELLAR LOGO 4.00X9.50	1
7	C1179	DECAL DANGER ELECTROCUTION HORTL	2	20	16657	DECAL CONTROL HANDLE 28000	1
8	C5918	DECAL CAUTION STAND CLEAR	2	21	15172	DECAL ASME/ANSI B30.22/B30.5	1
9	C4541	DECAL WARNING	2	22	16470	DECAL VB CONTROL 28000	1
10	C4795	DECAL DANGER FOOT	2	23	16973	DECAL USE STELLAR APPROVED ATTACHMT	2
11	4214	DECAL CONTACT STELLAR	1	24	22618	DECAL GREASE WEEKLY	1
12	16620	DECAL SWITCH PLATE 28000	1	25	22619	DECAL CHECK GEARBOX	1
13	16618	DECAL OUTRIGGERS 28000	1	26	16732	DECAL TIRE MAN OVERLOAD POSITION	2

Limited Warranty Statement

**for Stellar Tire Service Trucks, Truck-mounted Cranes, Truck-mounted Stellarc Welders
& Truck-mounted Compressed Air Systems ONLY**

Stellar Industries, Inc. (Stellar) warrants products designed and manufactured by Stellar to be free from defects in material and workmanship under proper use and maintenance. Products must be installed and operated in accordance with Stellar's written instructions and stated lifting capacities. The warranty period shall be Twelve (12) month warranty on all Stellar designed and fabricated parts, and Ninety (90) days repair labor.

The warranty period shall begin from the date recorded by Stellar as the in-service date. This date will be derived from the completed warranty registration card. In the event a warranty registration card is not received by Stellar, the factory ship date will be used. Stellar's obligation under this warranty is limited to, and the sole remedy for any such defect shall be, the repair and/or replacement (at Stellar's option) of the part and/or component in question. Stellar after-sales service personnel must be notified by telephone, fax, e-mail, or mail of any warranty-applicable damage within fourteen (14) days of it's occurrence. If at all possible, Stellar will ship the replacement part within 24-hours of notification by the most economical, yet expedient, means possible. Expedited freight delivery will be at the expense of the owner.

Warranty claims must be submitted and shall be processed in accordance with Stellar's established warranty claim procedure. Stellar Service personnel must be contacted prior to any warranty claim. A return materials authorization (RMA) account number must be issued to the claiming party prior to the return of any warranty parts. Parts returned without prior authorization will not be recognized for warranty consideration. All damaged parts must be returned to Stellar freight prepaid; freight collect returns will be refused.

Warranty service will be performed by any Stellar new equipment distributor, or by any Stellar-recognized service center authorized to service the type of product involved, or at the Stellar factory. At the time of requesting warranty service, the owner must present evidence of date of delivery of the product. The owner shall be obligated to pay for any overtime labor requested of the servicing company by the owner, any field service call charges, and any towing and/or transportation charges associated with moving the equipment to the designated repair/service provider. All obligations of Stellar and it's authorized dealers and service providers shall be voided if someone other than an authorized Stellar dealer provides other than routine maintenance service without prior written approval from Stellar. In the case repair work is performed on the Stellar-manufactured product, original Stellar parts must be used to keep the warranty in force. The warranty may also be voided if the product is modified or altered in any way not approved, in writing, by Stellar engineering.

The owner/operator is responsible for furnishing proof of the date of original purchase of the Stellar product in question. Warranty registration is the ultimate responsibility of the owner and may be accomplished by the completion and return of the Stellar product registration card provided with the product. If the owner is unsure of registration, he is encouraged to contact Stellar at the address below to confirm registration of the product in question. This warranty covers only defective material and workmanship. It does not cover depreciation or damage caused by normal wear and tear, accident, mishap, untrained operators, or improper or unintended use. The owner has the obligation of performing routine care and maintenance duties as stated in Stellar's written instructions, recommendations, and specifications. Any damage resulting from owner/operator failure to perform such duties shall void the coverage of this warranty. The cost of labor and supplies associated with routine maintenance will be paid by the owner.

The only remedies the owner has in connection with the breach or performance of any warranty on the Stellar product specified are those set above. In no event will Stellar, the Stellar distributor/dealer, or any company affiliated with Stellar be liable for business interruptions, costs of delay, or for any special, indirect, incidental, or consequential costs or damages. Such costs may include, but are not limited to, loss of time, loss of revenue, loss of use, wages, salaries, commissions, lodging, meals, towing, hydraulic fluid, or any other incidental cost.

All products purchased by Stellar from outside vendors shall be covered by the warranty offered by that respective manufacturer only. Stellar does not participate in, or obligate itself to, any such warranty.

Hydraulic cylinders used in Stellar products are subject to the same warranty provisions stated above. Should a cylinder defect develop within the above stated warranty period, notify Stellar immediately. Stellar will ship, freight prepaid, by the most effective, expedient, means a new or re-manufactured cylinder of the same size and type. An authorization for return of the original part will be issued at the time the order is placed. The defective cylinder is to be returned to Stellar freight prepaid by the owner. Cylinders returned freight collect will be refused. Should the defective cylinder not be returned within 30 days of shipping the replacement cylinder, the owner is responsible to pay Stellar the full purchase price of the replacement part.

Stellar reserves the right to make changes in design or improvement upon it's products without imposing upon itself the same upon it's products theretofore manufactured.

This warranty will apply to all Stellar Tire Service Trucks, Truck-mounted Cranes, Truck-mounted Stellarc Welders & Truck-mounted Compressed Air Systems shipped from Stellar's factory after January 1,1997. The warranty is for the use of the original owner only and is not transferable without prior written permission from Stellar.

THIS WARRANTY IS EXPRESSLY IN LIEU OF ANY OTHER WARRANTIES, EXPRESS OR IMPLIED, INCLUDING ANY WARRANTY OF MERCHANTABILITY OR FITNESS FOR A PARTICULAR PURPOSE. REMEDIES UNDER THIS WARRANTY ARE LIMITED TO THE PROVISION OF MATERIAL AND SERVICES, AS SPECIFIED HEREIN. STELLAR INDUSTRIES, INC. IS NOT RESPONSIBLE FOR INCIDENTAL OR CONSEQUENTIAL DAMAGES.

Stellar Industries, Inc. • 280 West Third Street • Garner, Iowa 50438 • U.S.A.

E-Mail • sales@stellar-industries.com

Telephone: 800/321-3741; 641/923-3741 • Fax: 641/923-2812; 641/923-2811

Revised 10/05/2000