



CRANE MODEL 3200A

TABLE OF CONTENTS

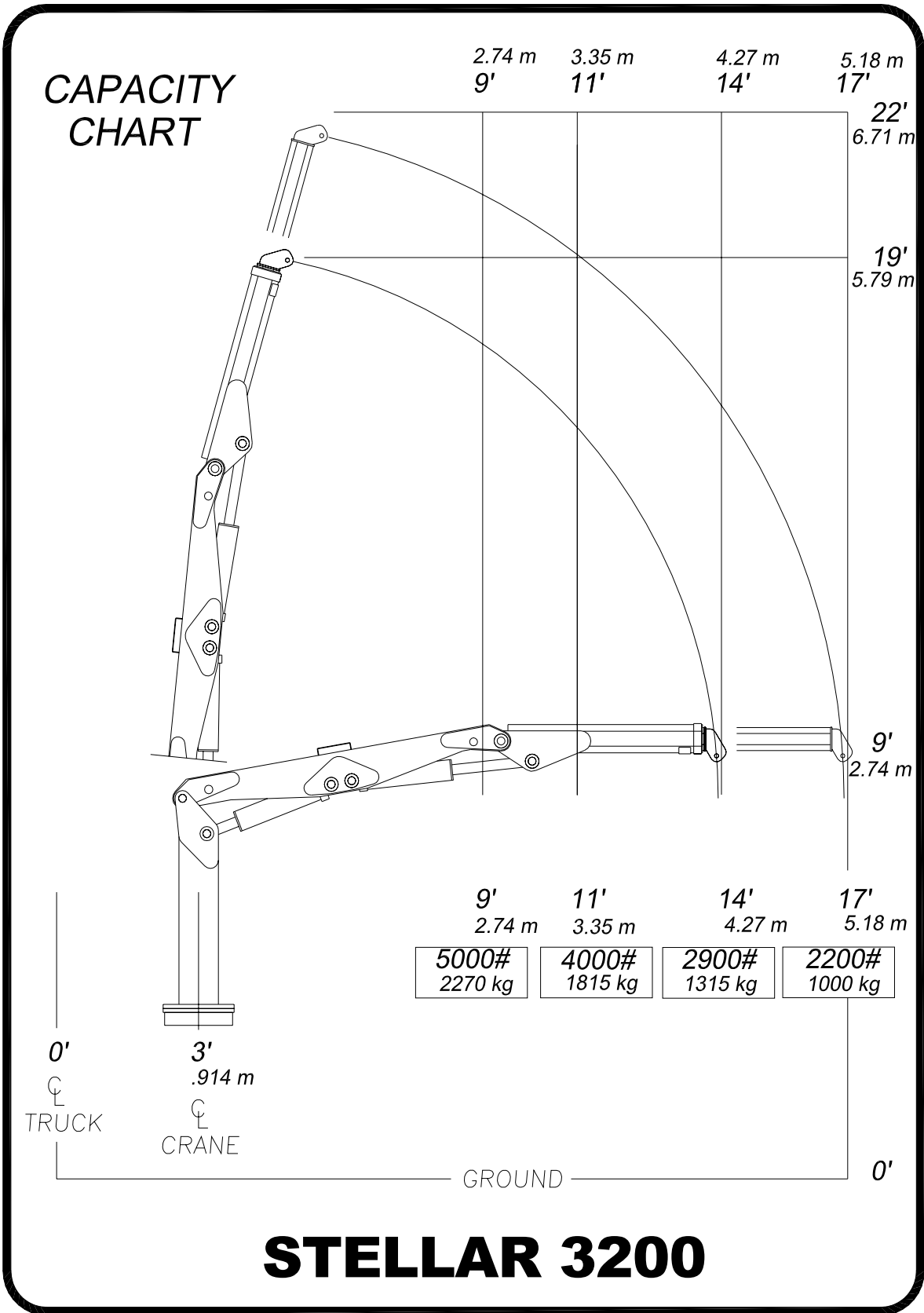
STELLAR CRANE 3200

PAGE	DESCRIPTION
3.)	SPECIFICATION SHEET
4.)	CAPACITY CHART
5.)	CRANE OPERATION
6.)	MANUAL OPERATION
7.)	BASE ASSEMBLY
8.)	MAST ASSEMBLY
9.)	MAIN BOOM ASSEMBLY
10.)	EXTENSION BOOM ASSEMBLY
11.)	CONTROL KIT
12.)	HYDRAULIC KIT
13.)	INSTALLATION KIT
14.)	DECAL KIT
15.)	WARRANTY

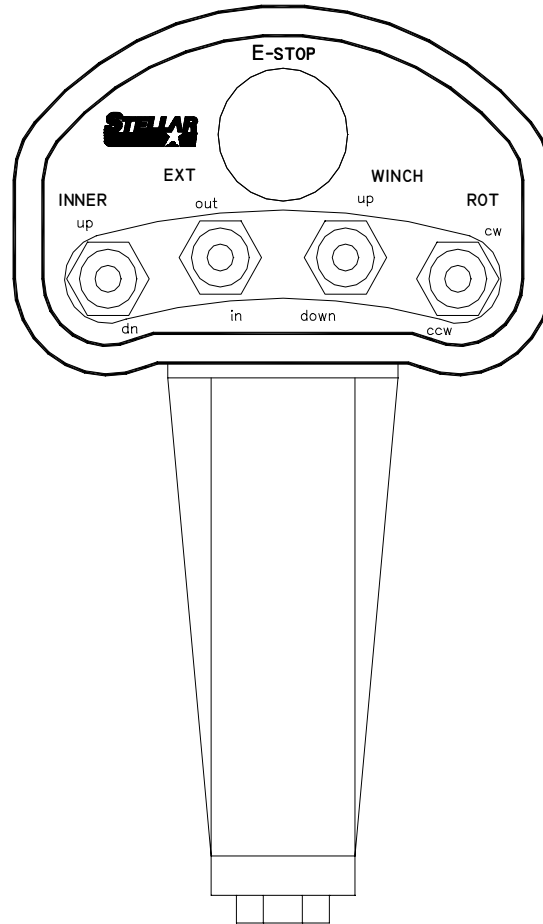
SPECIFICATION SHEET

Crane Rating	32,000 ft-lbs (4.42 ton-meters)
Standard Boom Length	11'(3.35 m)-from CL of Crane 14'(4.27 m)-from CL of Truck
Boom Extension	Hydraulic 32"(81.3 cm)
Maximum Horizontal Reach	14'(4.27 m)-from CL of Crane 17'(5.18 m)-from CL of Truck
Maximum Vertical Lift (from truck frame)	18'(5.49 m)
Inner Lift Cylinder	4 ½"(11.4 cm) bore with integral pilot operated counterbalance valves.
Outer Lift Cylinder	4 ½"(11.4 cm) bore with integral pilot operated counterbalance valves.
Extension Cylinder	2 ½"(6.35 cm) bore with integral pilot operated counterbalance valves.
Rotation	290 degree power (worm gear drive)
Lifting Capacities From CL of Truck	5,000 lbs @ 9'(2270 kg @ 2.74 m) 4,000 lbs @ 11'(1815 kg @ 3.35 m) 2,900 lbs @ 14'(1315 kg @ 4.27 m) 2,200 lbs @ 17' (1000 kg @ 5.18 m)
Power Supply Required	PTO & Pump (4 gpm @ 2800 psi) (15.14 lpm @ 193 bars)
Controls	Proportional Radio Controls standard for all functions
Stowed Height (above truck frame)	67 inches (170.2 cm)
Mounting Space Required	24 inches (61.0 cm)
Approximate Shipping Weight	1900 pounds (860 kg)

CAPACITY CHART



CRANE OPERATION



This crane is operated by a radio control system which operates an electronic valve bank. The controller (as shown) operates the following functions:

- main boom up and down
- extension boom in and out
- winch up and down
- rotation cw and ccw

To operate crane, activate the desired toggle switch. The crane will not function until the trigger on the remote handle is activated. The crane speed will change as the trigger is pulled or released.

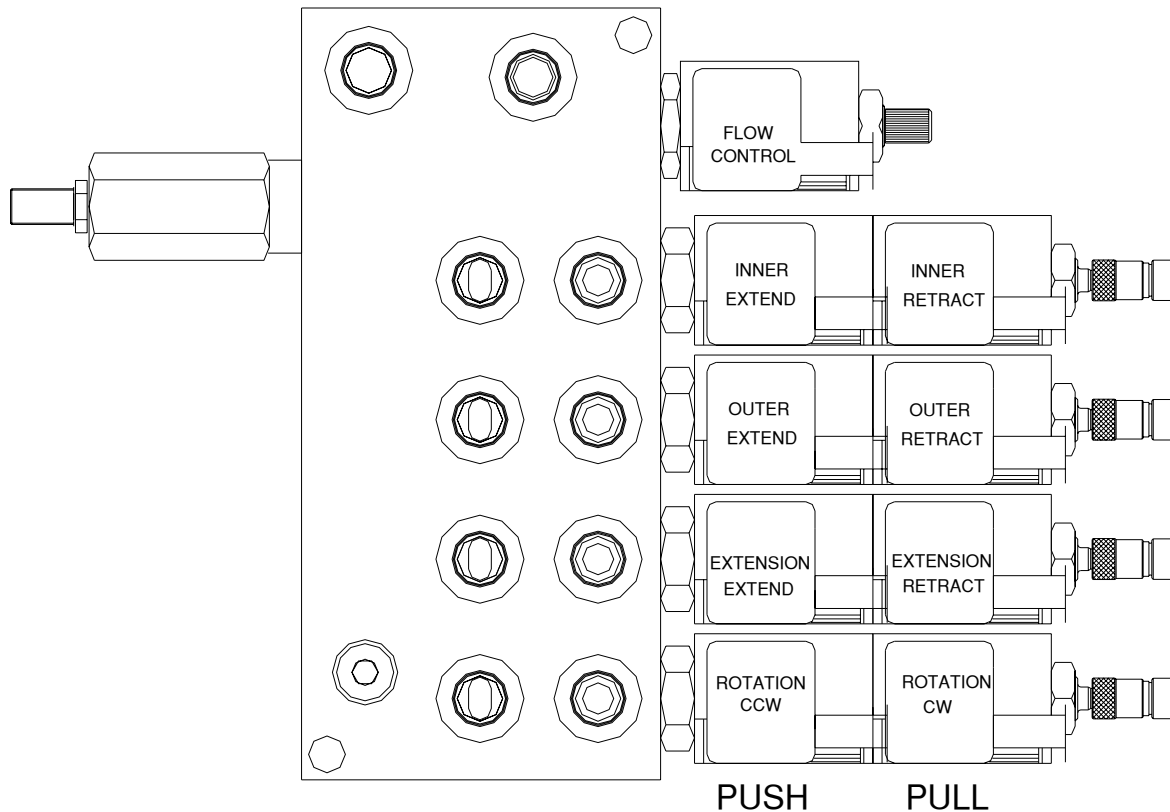
NOTE: If the crane does not operate, check the batteries located in the remote handle and replace if necessary.

MANUAL OPERATION

IN CASE OF RADIO FAILURE THE CRANE CAN BE OPERATED USING MANUAL OVERRIDES LOCATED ON THE VALVE BANK.

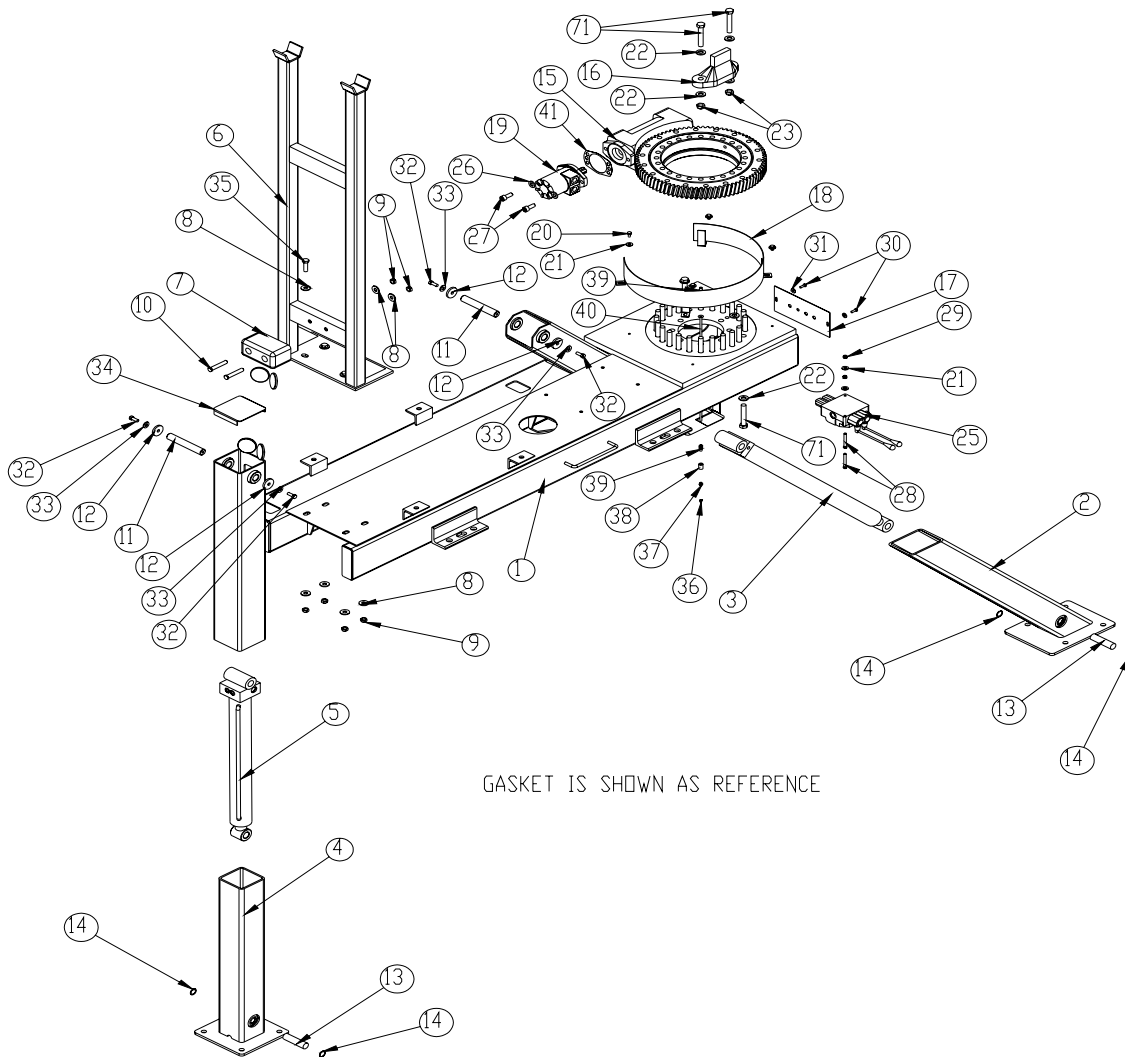
VALVE MANUAL OVERRIDE OPERATION

1. **ACTIVATE FLOW CONTROL**
TURN OVERRIDE SCREW ON FLOW CONTROL OUT.
2. **OPERATE SOLENOIDS**
UNLATCH THEN PUSH OR PULL TO OPERATE.
3. **DEACTIVATE FLOW CONTROL**
TURN OVERRIDE SCREW ON FLOW CONTROL IN.
4. **HAVE UNIT SERVICED**



BASE ASSEMBLY

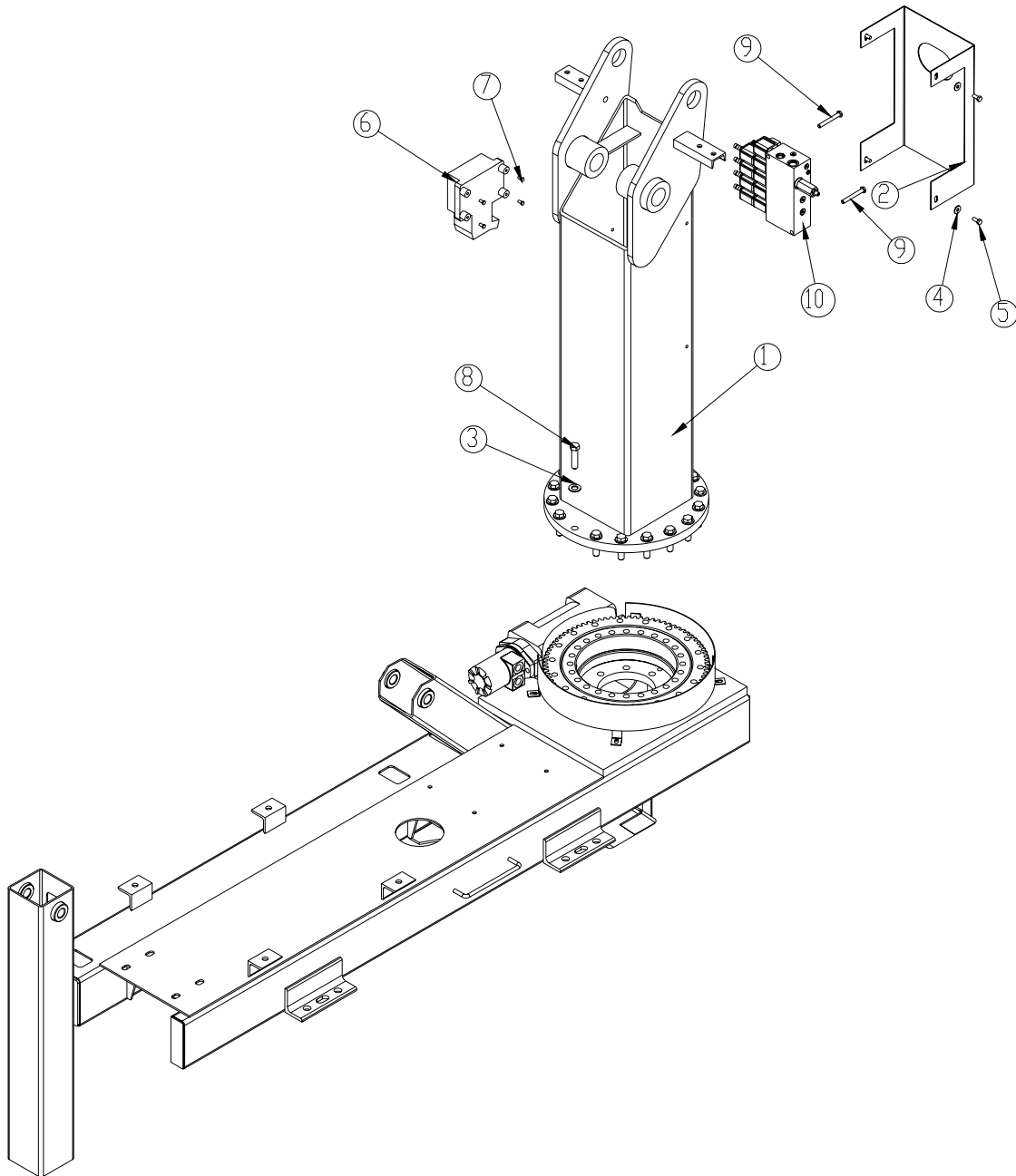
P/N 18156



GASKET IS SHOWN AS REFERENCE

ITEM PART	DESCRIPTION	QTY.	ITEM PART	DESCRIPTION	QTY.
1	D0802 BASE 3214		1	23 2826 NUT 0.63-11 HH NYLOC	2
2	D0967 OUTRIGGER 3214		1	25 10974 VB 2 SECT W/PB VDM6-4-4-YE-HP	1
3	D0773 CYLINDER 2.00X25.50		1	26 D0790 WASHER 0.50 FLAT GR8	2
4	3778 OUTRIGGER 3200		1	27 D1307 CAP SCR 0.50-13X1.25 SH	2
5	3783 CYLINDER 2.00X18.75		1	28 0489 CAP SCR 0.31-18X2.50 HHGR5	2
6	12648 SADDLE, 2200 NON ADJUSTABLE		1	29 0342 NUT 0.31-18 HH NYLOC	2
7	3945 BUMPER DOCK 3X3.38X6		1	30 0479 CAP SCR 0.25-20X0.75 HHGR5	2
8	0352 WASHER 0.50 USS FLAT ZINC		10	31 0340 WASHER 0.25 FLAT	2
9	C6106 NUT 0.50-13 HHGR5 NYLOC		6	32 13573 CAP SCR 0.38-16X1.00 HHGR8	4
10	0504 CAP SCR 0.50-13X3.00 HHGR5		2	33 C6353 WASHER 0.38 FLAT GR8	4
11	11688 PIN 1.00X6.25D&T		2	34 19248 OUTRIGGER CAP ASM	1
12	9320 PIN CAP 0.44X1.75X0.25 SS		4	35 0500 CAP SCR 0.50-13X1.75 HHGR5	4
13	D0977 PIN 1.00X3.75		2	36 C4808 CAP PLASTIC (RED)	1
14	3875 SNAP RING 1.00 INTERNAL		4	37 C1592 ZERK 1/8 NPT STRAIGHT	1
15	D0955 BEARING SWING DRIVE S-SW-65-85-A-R		1	38 C2256 FTG COUPLER PIPE 0.13	1
16	4074 STOP ROTATION 3200		1	39 D1345 FTG CPRSN 0.12NPT/0.25 TUBE	2
17	4082 PLATE SWITCH MTG 3214		1	40 D1810 TBE AIR SAEJ844 TYPE A .25	1
18	D1728 GUARD TTB 2120 CRANE		1	41 21151 GASKET MOTOR 008-10056-1	1
19	D1453 MOTOR HYD EATON 101-2493		1	52 C1026 CAP SCR 0.63-11X2.50 HHGR8 ZY	1
20	0484 CAP SCR 0.31-18 X 0.50 HHGR5		4	70 9991 WEAR PAD 0.25X2.00 RND NYLATRON	4
21	0343 WASHER 0.31 USS FLAT ZINC		6	71 11692 CAP SCR 0.63-11X3.75 HHGR8	25
22	C5902 WASHER 0.63 SAE FLAT YELLOW GR8		29		

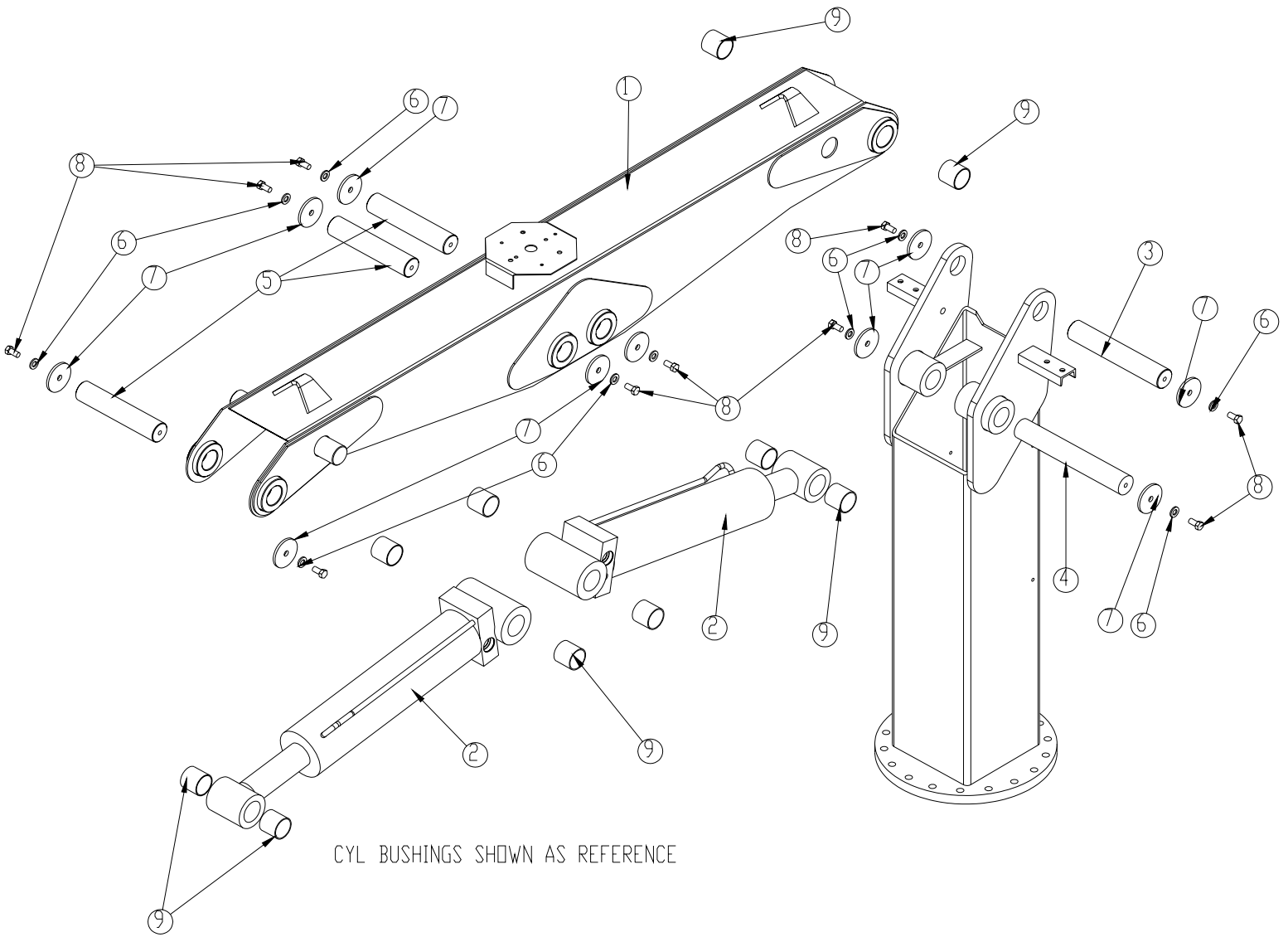
MAST ASSEMBLY P/N 18157



ITEM	PART	DESCRIPTION	QTY.	ITEM	PART	DESCRIPTION	QTY.
1	14174	MAST 3200A	1	6	11847	RADIO RECEIVER	1
2	14185	GUARD VB 3200	1	7	10976	CAP SCR 6MMX12MM HHGR8	4
3	C5902	WASHER 0.63 FLAT GR8	18	8	C1026	CAP SCR 0.63-11X2.50 HHGR8 ZY	18
4	0343	WASHER 0.31 FLAT	4	9	C0930	CAP SCR 0.31-18X3.00 HHGR5	2
5	0420	CAP SCR 0.31-18X0.75 HHGR	4	10	24690	VB 4 SECT ELECT W/PROP STERLING4GPM	1

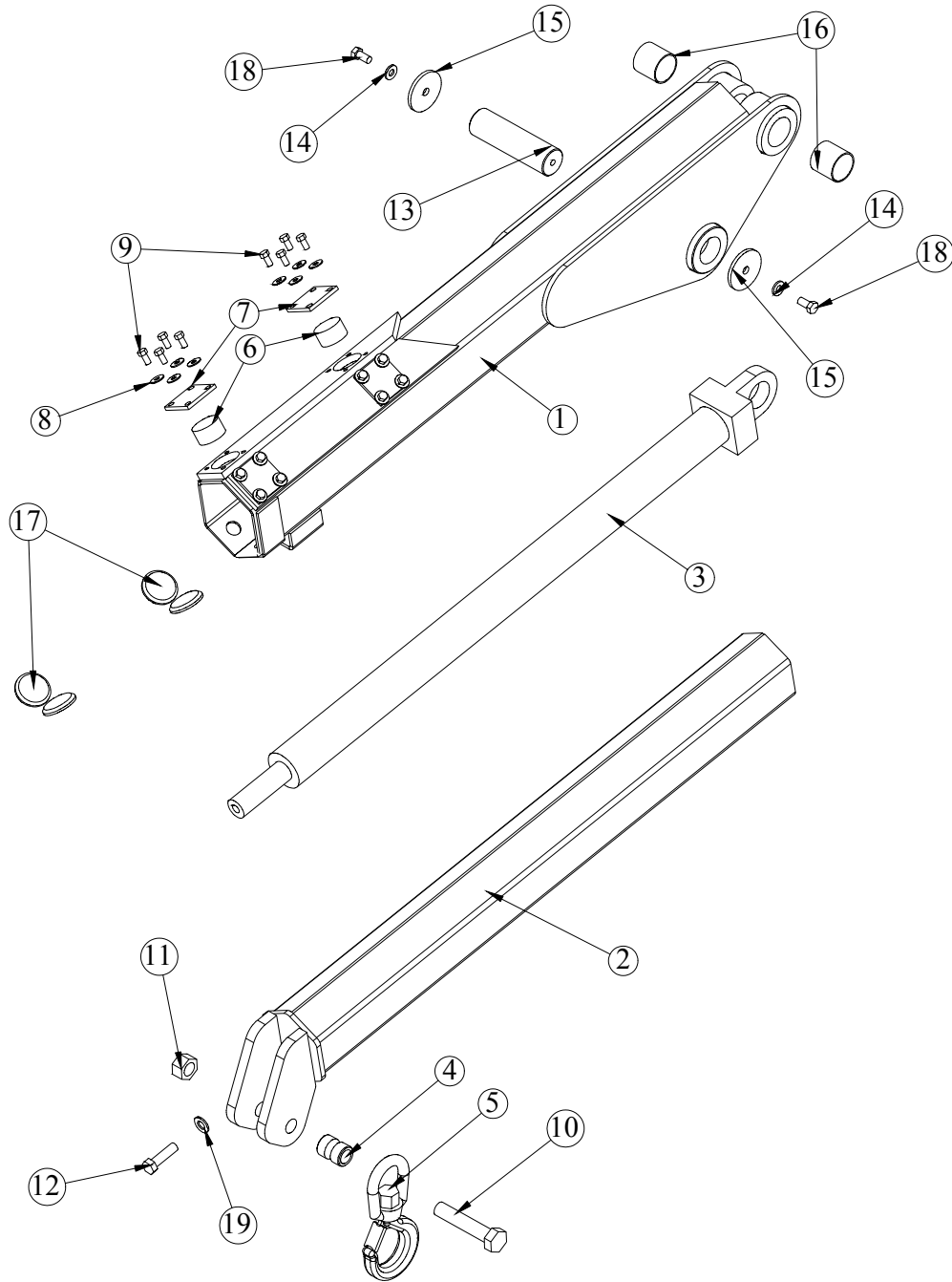
MAIN BOOM ASSEMBLY

P/N 18158



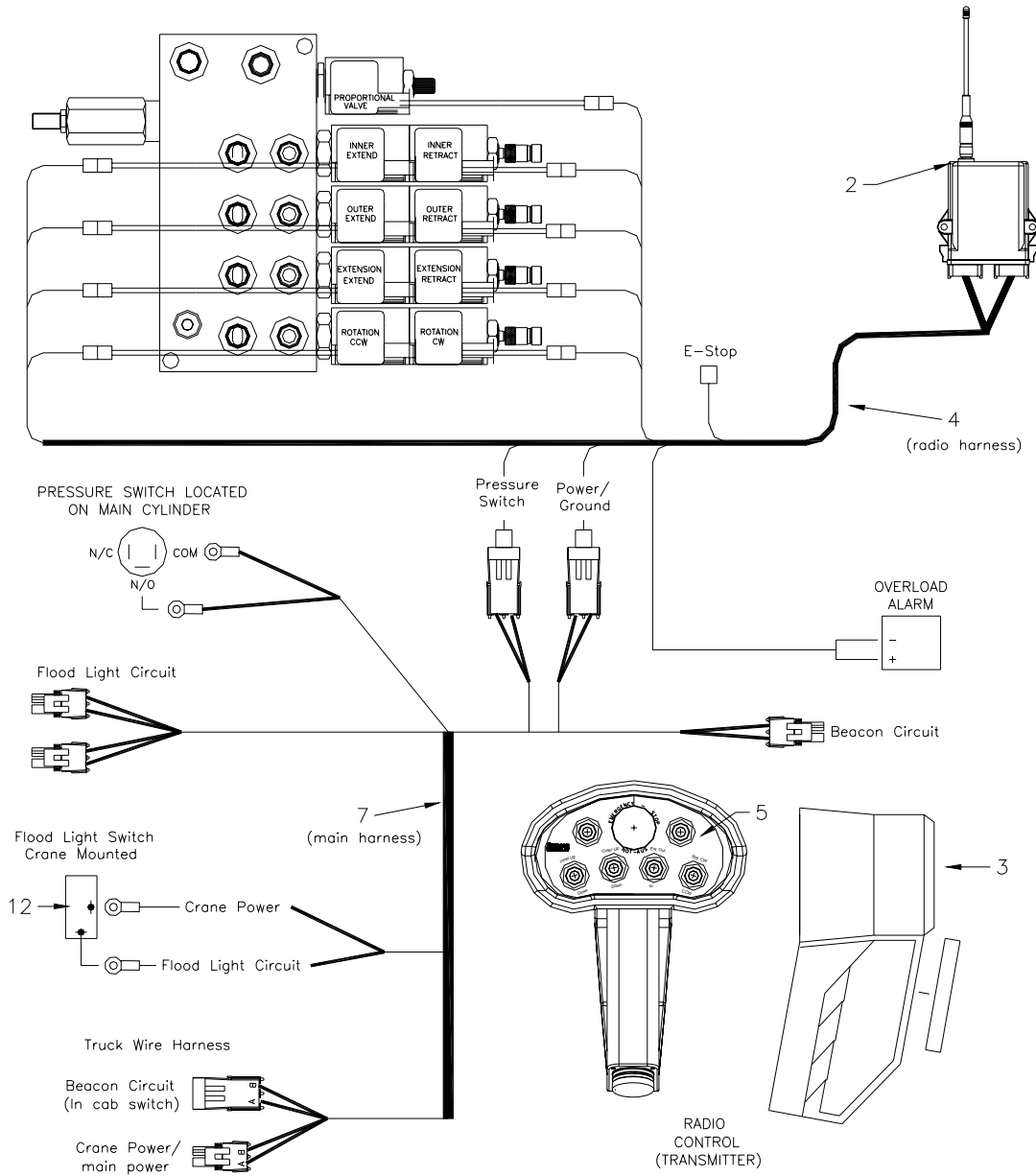
ITEM	PART	DESCRIPTION	QTY.
1	14177	INNER BOOM 3200 CRANE	1
2	D0771	CYLINDER 3200 INNER	2
3	9710	PIN 2.00X11.69 D&T	1
4	11849	PIN 2.00X13.50 D&T	1
5	14189	PIN 2.00X10.00 D&T	3
6	D0790	WASHER 0.50 FLAT GR8	10
7	5145	PIN CAP 0.56X3.00X.25	10
8	10172	CAP SCR 0.50-13X1.00 HHGR8 ZY	10
9	4381	BUSHING 32DXR32 2.00X2.00 GARLOCK	10

EXTENSION BOOM ASSEMBLY P/N 18159



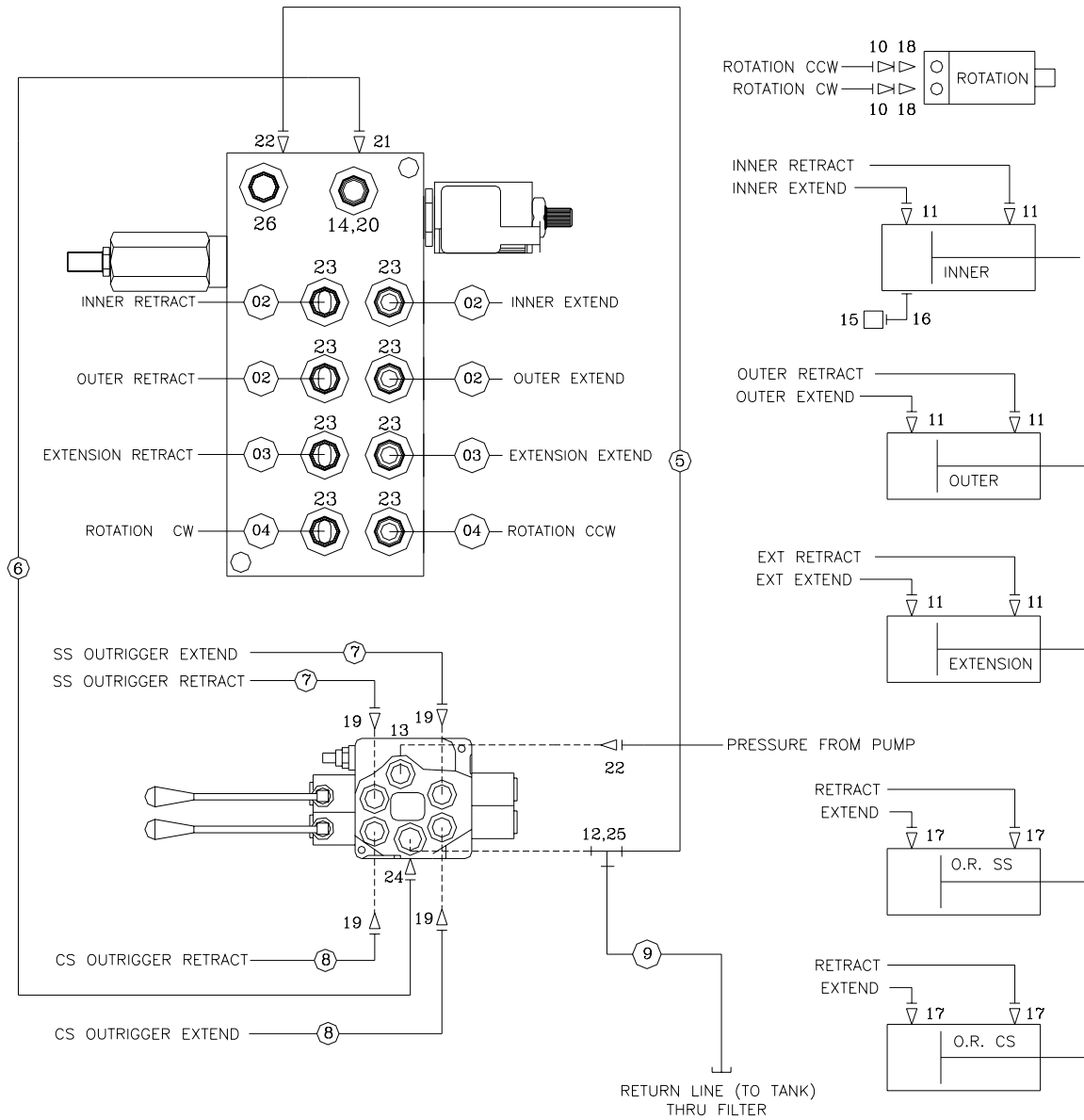
ITEM	PART	DESCRIPTION	QTY.	ITEM	PART	DESCRIPTION	QTY.
1	14179	OUTER BOOM 3200	1	11	0991	NUT 1.00 HH NYLOC	1
2	D0583	EXTENSION BOOM 3200	1	12	0509	CAP SCR 0.63-11X1.75 HH Z	1
3	D0770	CYLINDER EXT 3200	1	13	14190	PIN 2.00X7.00 D&T	1
4	4485	BUSHING HOOK 3200	1	14	D0790	WASHER 0.50 FLAT GR8	2
5	3863	HOOK 5 TON	1	15	5145	PIN CAP 0.56X3.00X.25	2
6	9363	WEAR PAD 1.12X2.00 RND NYLATRON	4	16	4381	BUSHING 32DXR32 2.00X2.00 GARLOCK	2
7	9361	PLATE WEAR PAD COVER 3200	4	17	9991	WEAR PAD 0.25X2.50 RND NYLATRON	4
8	C6353	WASHER 0.38 FLAT GR8	16	18	10172	CAP SCR 0.50-13X1.00 HHGR8 ZY	2
9	9843	CAP SCR 0.38-16X0.75 HHGR8	16	19	C5902	WASHER 0.63 FLAT GR8	1
10	4541	CAP SCR 1.00-8X5.00 HHGR5	1				

CONTROL KIT P/N 12484



12	C4815	SWITCH TOGGLE ON/OFF	1
11	16255	BATTERY CHARGER W/BTRY 110-3.6V	1
10			
09			
08			
07	19076	WIRE HARNESS - CRANE	1
06	34111	DECAL CONTROL HANDLE H2 6FCTN TS	1
05	D0045	OVERLOAD ALARM	1
04	34043	WIRE HARNESS - RADIO	1
03	34102	TRANSMITTER (PART OF 1)	1
02	34103	RECEIVER (PART OF 1)	1
01	34101	RADIO SYSTEM 4 FUNCTION	1
ITEM	PART No.	DESCRIPTION	QTY

HYDRAULIC KIT P/N 13283



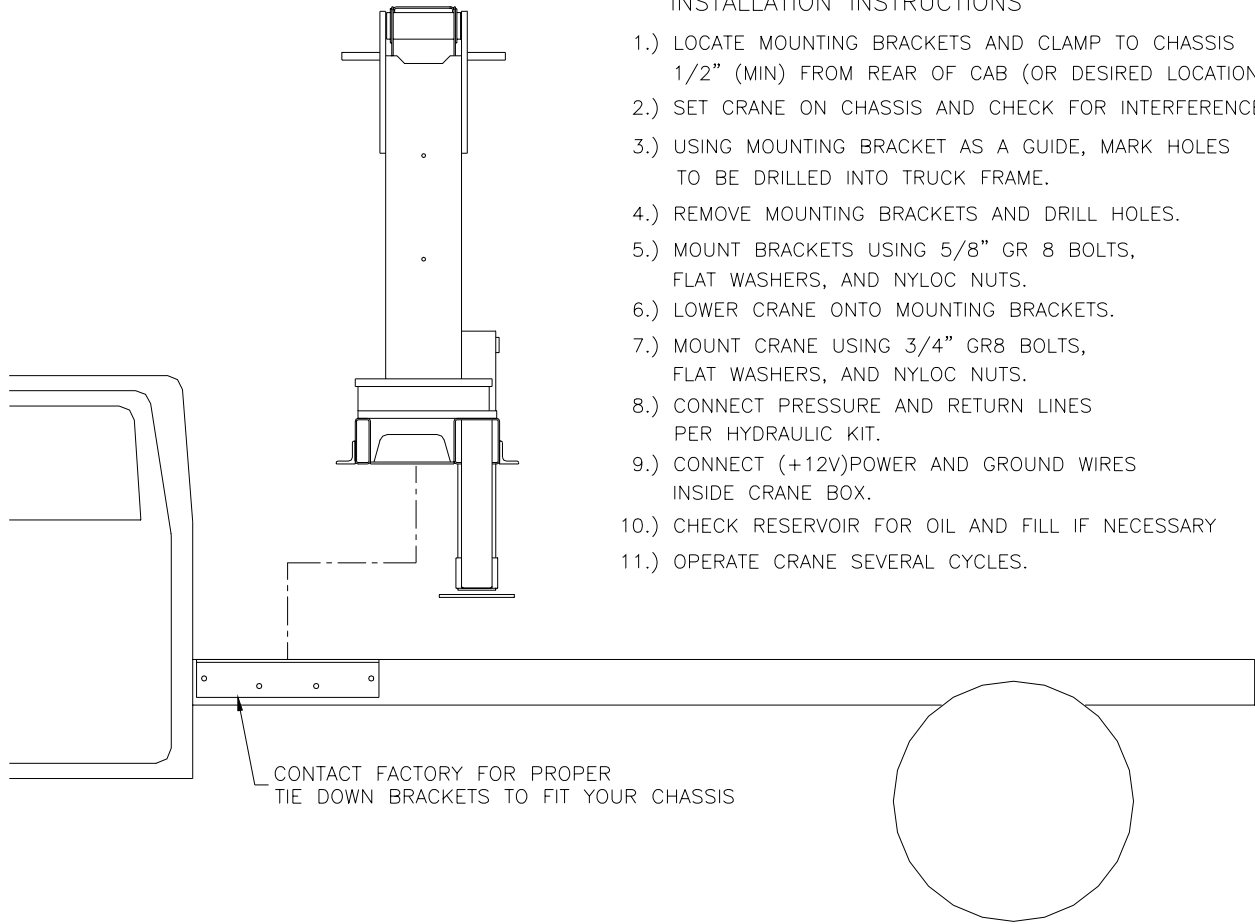
13	D1535	PLUG STR HOLLOW HEX 0.50 8-HP50N	1	26	C4961	PLUG STR HOLLOW HEX 0.38 6-HP50N	1
12	7350	FTG ST RUN TEE 8R50LO	1	25	14441	FTG ADAPT MSTR/FSTR 10-8 F50G5	1
11	D1291	FTG ADAPT 4-F50LO-S	6	24	C1854	FTG ADAPT 6-8 F50LO-S	1
10	C4922	FTG ADAPT 4-6 F50LO-S	2	23	3338	FTG ADAPT 4-6C50LO	8
09	13289	HOSE .50 X 76.00	1 REF	22	1554	FTG ADAPT 8-F50LO-S	2
08	13285	HOSE .25 X 90.00	2 REF	21	0279	FTG ADAPT 6-F50LO-S	1
07	13286	HOSE .25 X 102.00	2 REF	20	6397	GAUGE OIL LF 2.5" 0-5000 CBM	1
06	13288	HOSE .50 X 110.00	1 REF	19	12160	FTG ADAPT 4-8 F50LO	4
05	13287	HOSE .38 X 90.00	1 REF	18	C1111	FTG ADAPT MSTR/FSTR 10-6 F50G5	2
04	4536	HOSE .25 X 153.00	2 REF	17	D1314	FTG SWIVEL NUT ELBOW 4-C6LO-S	4
03	13437	HOSE .25 X 118.00	2 REF	16	3861	FTG ML FM O'RING 90 DEG	1
02	4534	HOSE .25 X 68.00	4 REF	15	3862	SWITCH PRES OVERLD	1
01	13284	HOSE KIT 3200	1	14	D1430	FTG ADAPT O'RING FMP 6-1/4 F50G-S	1
ITEM	PART No.	DESCRIPTION	QTY	ITEM	PART No.	DESCRIPTION	QTY

INSTALLATION KIT

P/N 7984

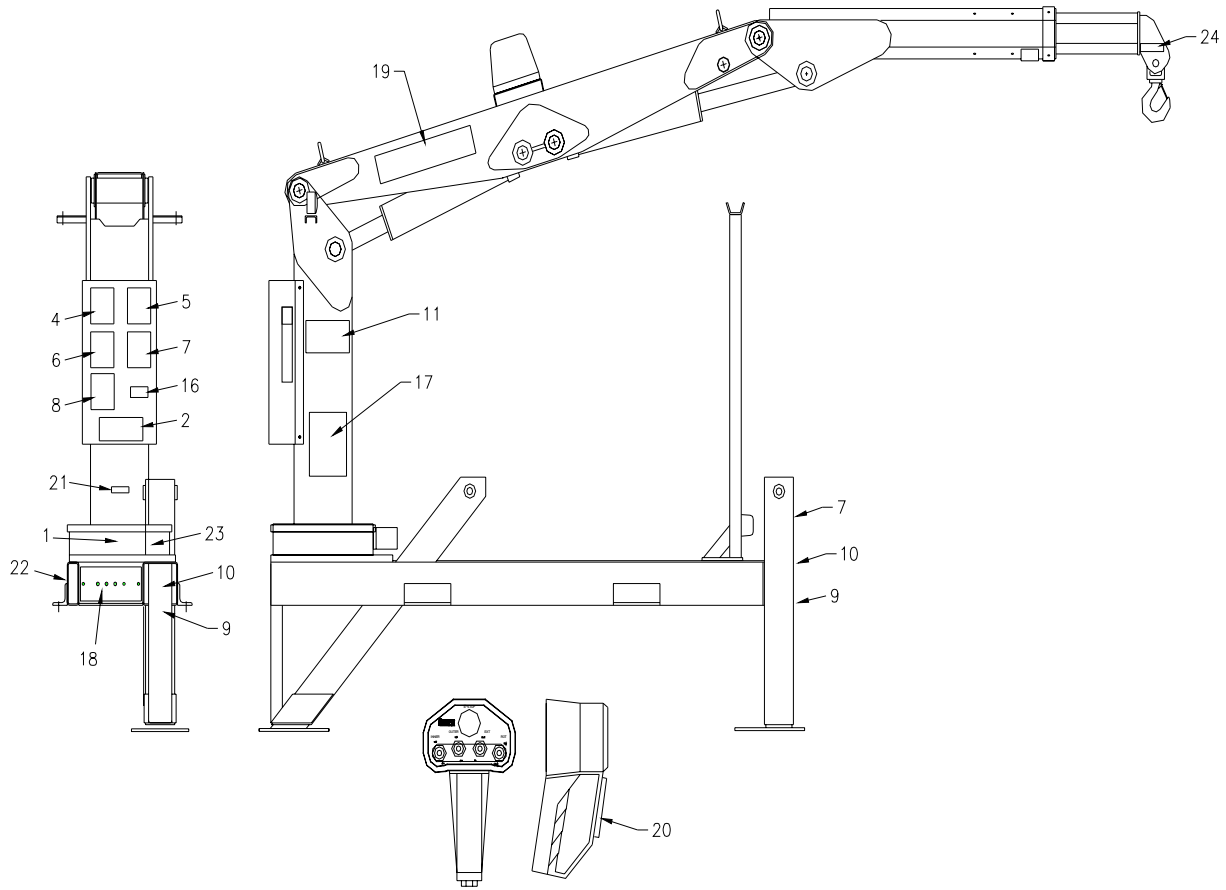
INSTALLATION INSTRUCTIONS

- 1.) LOCATE MOUNTING BRACKETS AND CLAMP TO CHASSIS 1/2" (MIN) FROM REAR OF CAB (OR DESIRED LOCATION).
- 2.) SET CRANE ON CHASSIS AND CHECK FOR INTERFERENCES.
- 3.) USING MOUNTING BRACKET AS A GUIDE, MARK HOLES TO BE DRILLED INTO TRUCK FRAME.
- 4.) REMOVE MOUNTING BRACKETS AND DRILL HOLES.
- 5.) MOUNT BRACKETS USING 5/8" GR 8 BOLTS, FLAT WASHERS, AND NYLOC NUTS.
- 6.) LOWER CRANE ONTO MOUNTING BRACKETS.
- 7.) MOUNT CRANE USING 3/4" GR8 BOLTS, FLAT WASHERS, AND NYLOC NUTS.
- 8.) CONNECT PRESSURE AND RETURN LINES PER HYDRAULIC KIT.
- 9.) CONNECT (+12V)POWER AND GROUND WIRES INSIDE CRANE BOX.
- 10.) CHECK RESERVOIR FOR OIL AND FILL IF NECESSARY
- 11.) OPERATE CRANE SEVERAL CYCLES.



06	C0538	NUT, 0.75-10 NYLOC	4
05	C6219	WASHER, 0.75 FLAT SAE	8
04	4974	CAP SCR, 0.75-10 X 2.50 HHGR8	4
03	2826	NUT, 0.63-11 NYLOC	8
02	C5902	WASHER, 0.63 FLAT SAE	16
01	C1025	CAP SCR, 0.63-11 X 2.00 HHGR8	8
ITEM	PART No.	DESCRIPTION	QTY

DECAL KIT P/N 13290



* THESE DECALS NOT SHOWN
(USE WITH BODY PACKAGE)

ITEM	PART No.	DESCRIPTION	QTY
26			
25			
24	16973	DECAL USE STELLAR APPROVED ATTACHMT	2
23	9188	DECAL WORM GEAR LUBRICATION	1
22	13036	DECAL CRANE OUTRIGGER	1
21	16172	DECAL ASME/ANSI B30.22/B30.5	1
20	6832	DECAL-MAGNET COVER	1
19	4182	DECAL-IDENTIFICATION	2
18	4158	DECAL-OR PANEL	1
17	4161	DECAL-CAPACITY	2
16	4214	DECAL-SERVICE	1
*15	4305	DECAL-FLOOD LIGHT	1
*14	C0568	DECAL-DIESEL FUEL ONLY	2
*13	C5911	DECAL- STELLAR 2x4.5	3
*12	C5910	DECAL- STELLAR 4x9.5	1
11	C1179	DECAL-ELECTROCUTION 4.5x7.5	2
10	C5918	DECAL-DANGER MOVING O.R.	2
09	C4795	DECAL-DANGER O.R.	2
08	4190	DECAL-DANGER	1
07	C4541	DECAL-DANGER STOWING	2
06	4189	DECAL-DANGER	1
05	C4544	DECAL-DANGER	1
04	C4540	DECAL-DANGER	1
*03	C4545	DECAL-ELECTROCUTION 5x13	4
02	4187	DECAL-ELECTROCUTION 3.25x7.5	1
01	4188	DECAL-ALIGNMENT	1

Limited Warranty Statement

for Stellar Tire Service Trucks, Truck-mounted Cranes, Truck-mounted Stellarc Welders & Truck-mounted Compressed Air Systems ONLY

Stellar Industries, Inc. (Stellar) warrants products designed and manufactured by Stellar to be free from defects in material and workmanship under proper use and maintenance. Products must be installed and operated in accordance with Stellar's written instructions and stated lifting capacities. The warranty period shall be Twelve (12) month warranty on all Stellar designed and fabricated parts, and Ninety (90) days repair labor.

The warranty period shall begin from the date recorded by Stellar as the in-service date. This date will be derived from the completed warranty registration card. In the event a warranty registration card is not received by Stellar, the factory ship date will be used. Stellar's obligation under this warranty is limited to, and the sole remedy for any such defect shall be, the repair and/or replacement (at Stellar's option) of the part and/or component in question. Stellar after-sales service personnel must be notified by telephone, fax, e-mail, or mail of any warranty-applicable damage within fourteen (14) days of it's occurrence. If at all possible, Stellar will ship the replacement part within 24-hours of notification by the most economical, yet expedient, means possible. Expedited freight delivery will be at the expense of the owner.

Warranty claims must be submitted and shall be processed in accordance with Stellar's established warranty claim procedure. Stellar Service personnel must be contacted prior to any warranty claim. A return materials authorization (RMA) account number must be issued to the claiming party prior to the return of any warranty parts. Parts returned without prior authorization will not be recognized for warranty consideration. All damaged parts must be returned to Stellar freight prepaid; freight collect returns will be refused.

Warranty service will be performed by any Stellar new equipment distributor, or by any Stellar-recognized service center authorized to service the type of product involved, or at the Stellar factory. At the time of requesting warranty service, the owner must present evidence of date of delivery of the product. The owner shall be obligated to pay for any overtime labor requested of the servicing company by the owner, any field service call charges, and any towing and/or transportation charges associated with moving the equipment to the designated repair/service provider.

All obligations of Stellar and it's authorized dealers and service providers shall be voided if someone other than an authorized Stellar dealer provides other than routine maintenance service without prior written approval from Stellar. In the case repair work is performed on the Stellar-manufactured product, original Stellar parts must be used to keep the warranty in force. The warranty may also be voided if the product is modified or altered in any way not approved, in writing, by Stellar engineering.

The owner/operator is responsible for furnishing proof of the date of original purchase of the Stellar product in question. Warranty registration is the ultimate responsibility of the owner and may be accomplished by the completion and return of the Stellar product registration card provided with the product. If the owner is unsure of registration, he is encouraged to contact Stellar at the address below to confirm registration of the product in question. This warranty covers only defective material and workmanship. It does not cover depreciation or damage caused by normal wear and tear, accident, mishap, untrained operators, or improper or unintended use. The owner has the obligation of performing routine care and maintenance duties as stated in Stellar's written instructions, recommendations, and specifications. Any damage resulting from owner/operator failure to perform such duties shall void the coverage of this warranty. The cost of labor and supplies associated with routine maintenance will be paid by the owner.

The only remedies the owner has in connection with the breach or performance of any warranty on the Stellar product specified are those set above. In no event will Stellar, the Stellar distributor/dealer, or any company affiliated with Stellar be liable for business interruptions, costs of delay, or for any special, indirect, incidental, or consequential costs or damages. Such costs may include, but are not limited to, loss of time, loss of revenue, loss of use, wages, salaries, commissions, lodging, meals, towing, hydraulic fluid, or any other incidental cost.

All products purchased by Stellar from outside vendors shall be covered by the warranty offered by that respective manufacturer only. Stellar does not participate in, or obligate itself to, any such warranty.

Hydraulic cylinders used in Stellar products are subject to the same warranty provisions stated above. Should a cylinder defect develop within the above stated warranty period, notify Stellar immediately. Stellar will ship, freight prepaid, by the most effective, expedient, means a new or re-manufactured cylinder of the same size and type. An authorization for return of the original part will be issued at the time the order is placed. The defective cylinder is to be returned to Stellar freight prepaid by the owner. Cylinders returned freight collect will be refused. Should the defective cylinder not be returned within 30 days of shipping the replacement cylinder, the owner is responsible to pay Stellar the full purchase price of the replacement part.

Stellar reserves the right to make changes in design or improvement upon it's products without imposing upon itself the same upon it's products theretofore manufactured.

This warranty will apply to all Stellar Tire Service Trucks, Truck-mounted Cranes, Truck-mounted Stellarc Welders & Truck-mounted Compressed Air Systems shipped from Stellar's factory after January 1, 1997. The warranty is for the use of the original owner only and is not transferable without prior written permission from Stellar.

THIS WARRANTY IS EXPRESSLY IN LIEU OF ANY OTHER WARRANTIES, EXPRESS OR IMPLIED, INCLUDING ANY WARRANTY OF MERCHANTABILITY OR FITNESS FOR A PARTICULAR PURPOSE. REMEDIES UNDER THIS WARRANTY ARE LIMITED TO THE PROVISION OF MATERIAL AND SERVICES, AS SPECIFIED HEREIN. STELLAR INDUSTRIES, INC. IS NOT RESPONSIBLE FOR INCIDENTAL OR CONSEQUENTIAL DAMAGES.

Stellar Industries, Inc. • 280 West Third Street • Garner, Iowa 50438 • U.S.A.

E-Mail • sales@stellar-industries.com

Telephone: 800/321-3741; 641/923-3741 • Fax: 641/923-2812; 641/923-2811

Revised 10/05/2000