



CRANE MODEL 3200

280 W. 3rd St., Box 169 • Garner, IA 50438 • Phone: 515-923-3741 • Fax: 515-923-2812

UPDATED 01/27/03

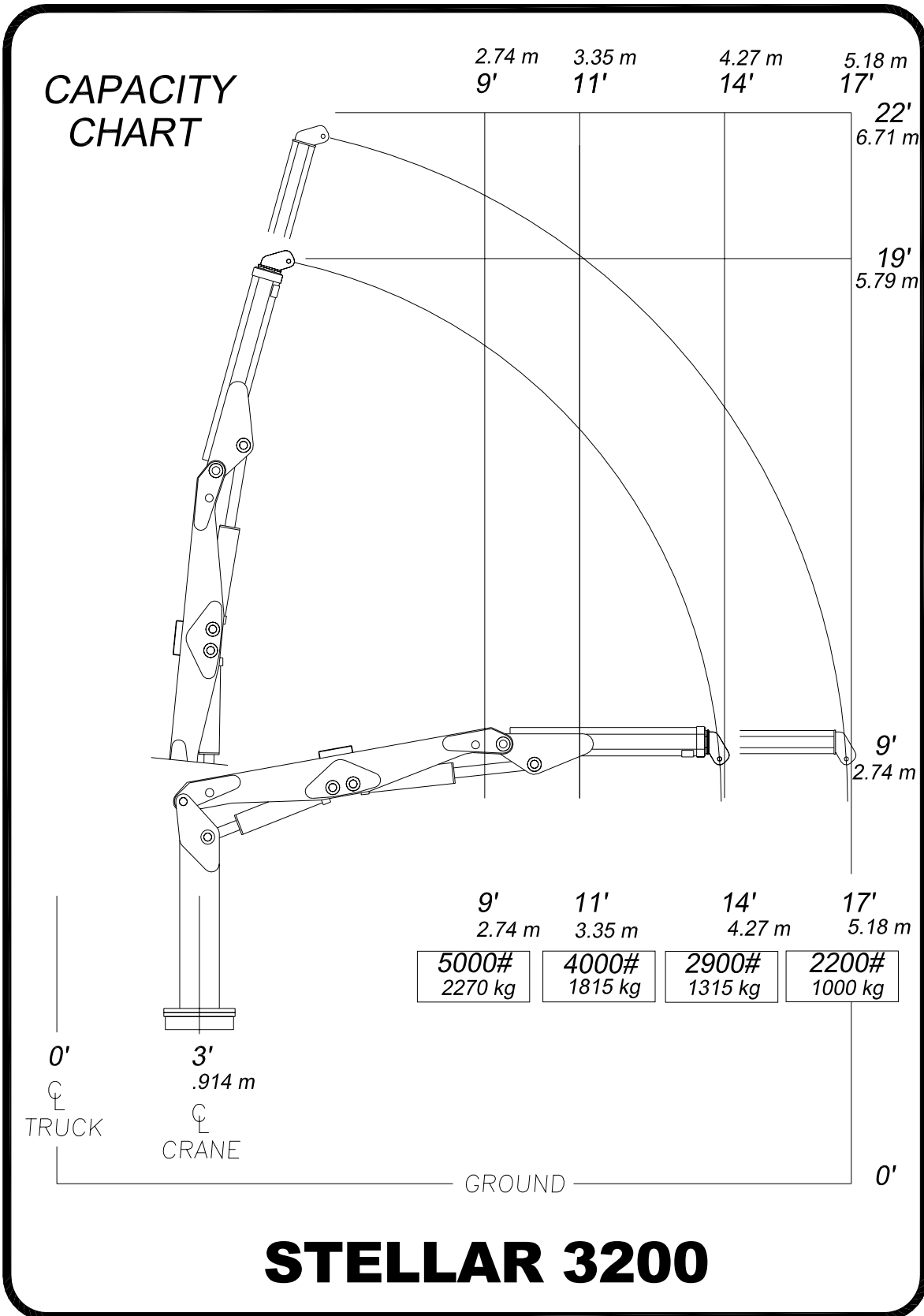
TABLE OF CONTENTS STELLAR CRANE 3200

PAGE	DESCRIPTION
3.)	SPECIFICATION SHEET
4.)	CAPACITY CHART
5.)	CRANE OPERATION
6.)	CRANE PARTS DRAWING
7.)	CONTROL KIT
8.)	HYDRAULIC KIT
9.)	HIGH PRESSURE FILTER
10.)	INSTALLATION KIT
11.)	DECAL KIT
12.)	WARRANTY

SPECIFICATION SHEET

Crane Rating	32,000 ft-lbs (4.42 ton-meters)
Standard Boom Length	11'(3.35 m)-from CL of Crane 14'(4.27 m)-from CL of Truck
Boom Extension	Hydraulic 32"(81.3 cm)
Maximum Horizontal Reach	14'(4.27 m)-from CL of Crane 17'(5.18 m)-from CL of Truck
Maximum Vertical Lift (from truck frame)	18'(5.49 m)
Inner Lift Cylinder	4 ½"(11.4 cm) bore with integral pilot operated counterbalance valves.
Outer Lift Cylinder	4 ½"(11.4 cm) bore with integral pilot operated counterbalance valves.
Extension Cylinder pilot operated counterbalance valves.	2 ½"(6.35 cm) bore with integral
Rotation	290 degree power (hourglass worm gear)
Lifting Capacities	5,000 lbs @ 9'(2270 kg @ 2.74 m) 4,000 lbs @ 11'(1815 kg @ 3.35 m) 2,900 lbs @ 14'(1315 kg @ 4.27 m) 2,200 lbs @ 17' (1000 kg @ 5.18 m)
Power Supply Required	PTO & Pump (4 gpm @ 2800 psi) (15.14 lpm @ 193 bars)
Controls	Proportional Radio Controls standard for all functions
Stowed Height (above truck frame)	60 inches (152.4 cm)
Mounting Space Required	24 inches (61.0 cm)
Approximate Shipping Weight	1900 pounds (860 kg)

CAPACITY CHART



CRANE OPERATION

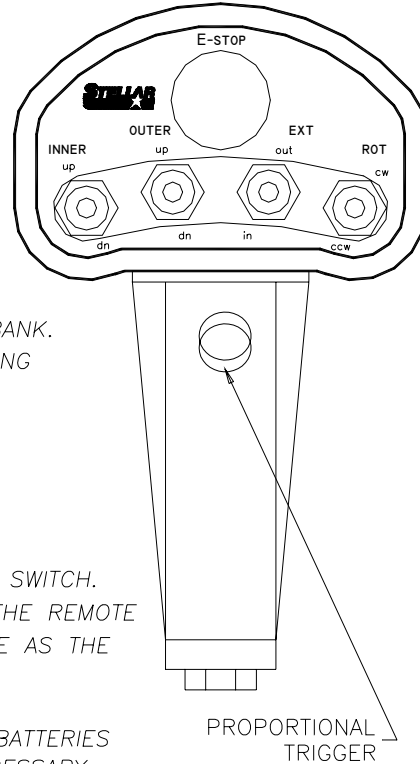
CRANE OPERATION

THIS CRANE IS OPERATED BY A RADIO CONTROL SYSTEM WHICH OPERATES AN ELECTRONIC VALVE BANK. THE CONTROLLER (AS SHOWN) OPERATES THE FOLLOWING FUNCTIONS:

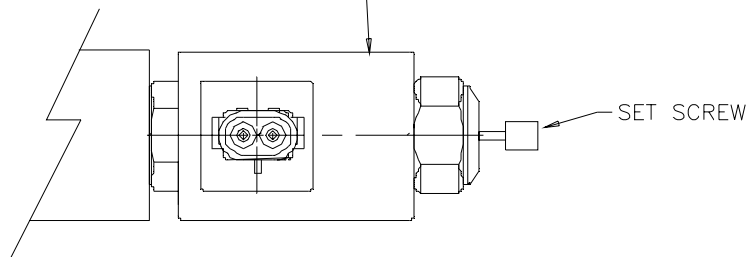
- INNER BOOM UP & DOWN
- OUTER BOOM UP & DOWN
- EXTENSION BOOM IN & OUT
- ROTATION CW & CCW

TO OPERATE THE CRANE ACTIVATE THE DESIRED TOGGLE SWITCH. THE CRANE WILL NOT FUNCTION UNTIL THE TRIGGER ON THE REMOTE HANDLE IS ACTIVATED. THE CRANE SPEED WILL CHANGE AS THE TRIGGER IS PULLED OR RELEASED.

NOTE: IF THE CRANE DOES NOT OPERATE CHECK THE BATTERIES LOCATED IN THE REMOTE HANDLE AND REPLACE IF NECESSARY.



FLOW CONTROL VALVE LOCATED ON BACK OF CRANE MAST



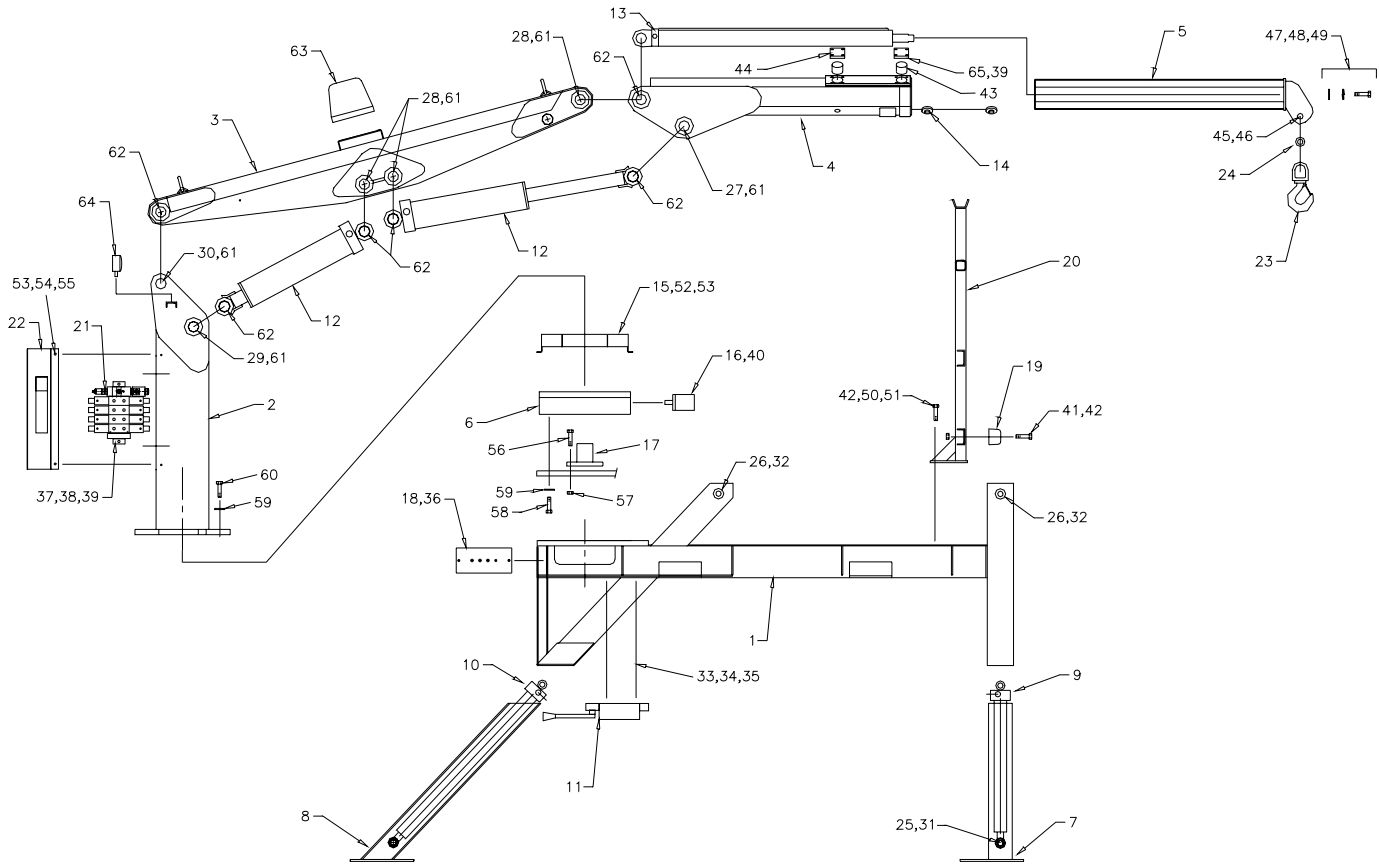
NOTE: IN THE EVENT THAT THE CRANE HYDRAULICS WILL NOT OPERATE WITH THE HANDLE, USE THE MANUAL CONTROLS LOCATED ON THE VALVE BANK.

TO OPERATE CRANE USING MANUAL CONTROLS:

1.) TURN SET SCREW FULLY CLOCKWISE.

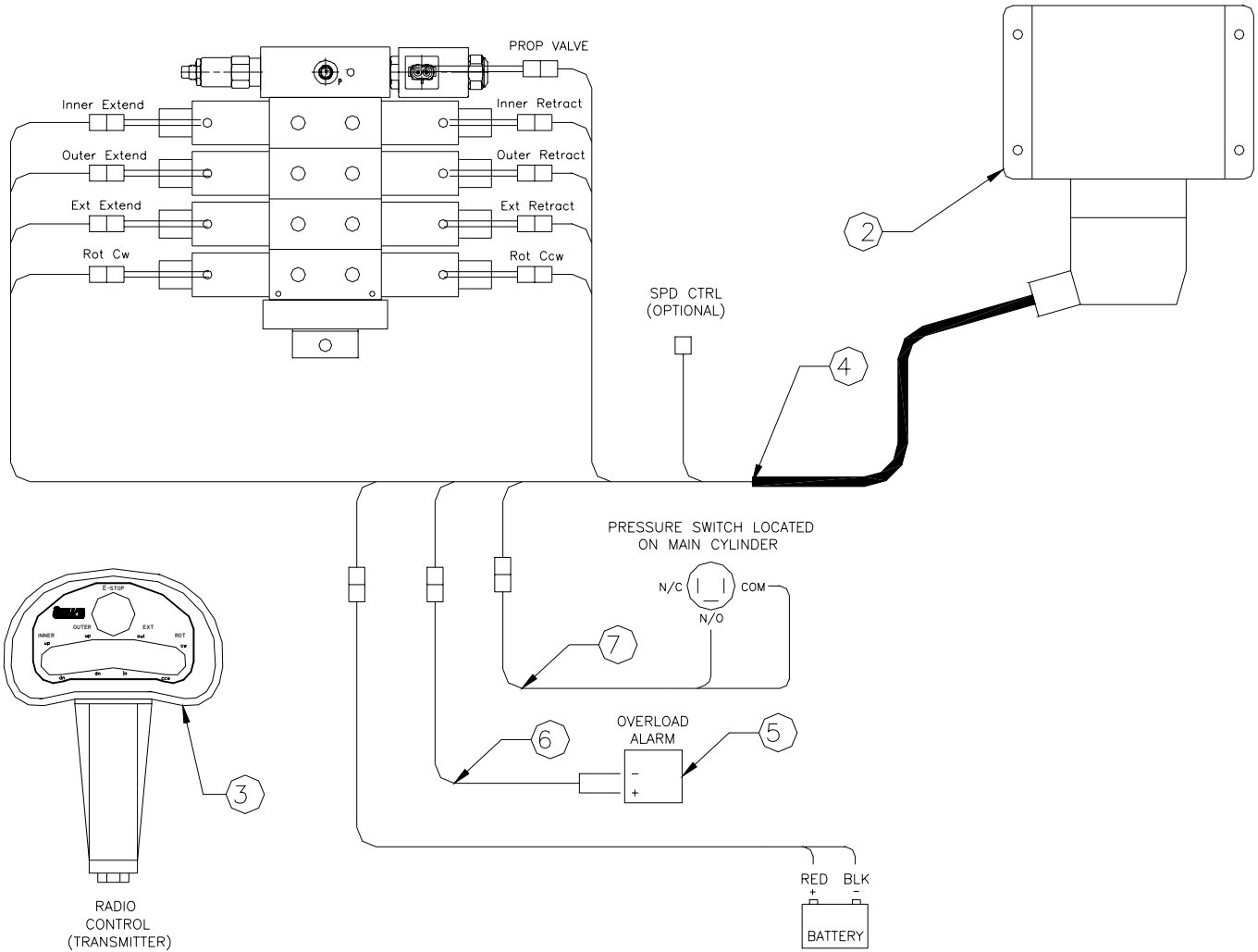
THE CRANE CAN NOW BE OPERATED WITH THE MANUAL OVERRIDES ON THE VALVE BANK.

CRANE PARTS



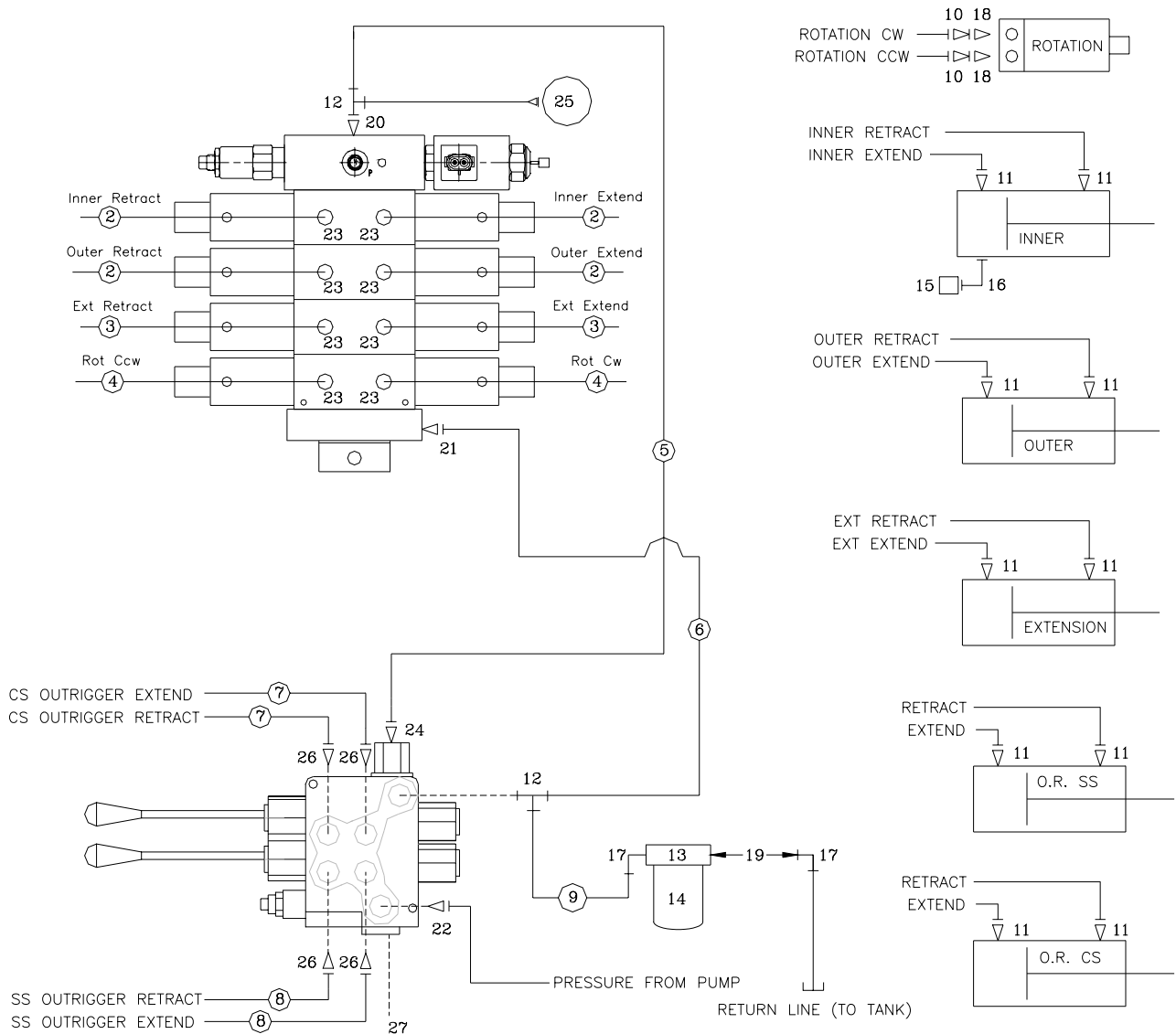
ITEM	PART No.	DESCRIPTION	QTY	ITEM	PART No.	DESCRIPTION	QTY
01	D0802	BASE, 3200 CRANE	1	34	O333	NUT, .25-20 NYLOC	2
02	D0745	MAST, 3200 CRANE	1	35	D0917	WASHER .25 FLAT SS	4
03	D0683	INNER BOOM, 3200 CRANE	1	36	D0613	SCREW, #14 X .75 TAPPING	2
04	D0624	OUTER BOOM, 3200 CRANE	1	37	C0942	CAP SCR, .38-16 X 1.25 HH	2
05	D0583	EXTENSION BOOM, 3200 CRANE	1	38	C4776	NUT, .38-16 NYLOC	2
06	D0955	BEARING, SWING DRIVE	1	39	O346	WASHER, .38 FLAT	20
07	3778	OUTRIGGER LEG, CS	1	40	D1307	CAP SCR, .50-13 X 1.25 SH	2
08	D0967	OUTRIGGER LEG, SS	1	41	C0996	CAP SCR, .50-13 X 3.00 HH	2
09	3783	CYLINDER, OUTRIGGER CS	1	42	C1048	NUT, .50-13 NYLOC	6
10	D0773	CYLINDER, OUTRIGGER SS	1	43	9363	WEAR PAD	4
11	10974	VB 2 SECT W/PB BM40/2-FU-MOA1X2	1	44	9361	PLATE- WEAR PAD COVER	4
12	D0771	CYLINDER, INNER & OUTER	2	45	4541	CAP SCR, 1.00-8 X 5.00 HH	1
13	D0770	CYLINDER, EXTENSION	1	46	C1050	NUT, 1.00-8 NYLOC	1
14	6252	WEAR PAD	4	47	C4736	CAP SCR, .62-11 X 2.25 HH Z	1
15	D1728	GUARD, ROTATION DRIVE	1	48	C1038	WASHER, .62 FLAT	1
16	D1453	MOTOR, HYD	1	49	C1045	WASHER, .62 LOCK	1
17	4074	ROTATION STOP	1	50	C0992	CAP SCR, .50-13 X 1.50 HH	4
18	4082	SWITCH MTG PLATE	1	51	O352	WASHER, .50 FLAT	4
19	3945	RUBBER BUMPER	1	52	C0920	CAP SCR, .31-18 X .50	4
20	4045	SADDLE, 3200 CRANE	1	53	O343	WASHER, .31 FLAT	8
21	13001	VALVE BANK, 4 SECTION	1	54	O522	WASHER, .31 LOCK	4
22	13075	VALVEBANK COVER	1	55	C0948	CAP SCR, .31-18 X .75 HH	4
23	3863	HOOK	1	56	D1034	CAP SCR, .62-11 X 3.00 HHGR8	2
24	4485	BUSHING	1	57	C1049	NUT, .62-11 NYLOC	2
25	D0977	PIN, 1.00 X 3.75	2	58	D1312	CAP SCR, .62-11 X 3.50 HHGR8	24
26	3796	PIN, 1.00 X 6.50	2	59	C5902	WASHER, .62 GR8	42
27	D0936	PIN, 2.00 X 7.62	1	60	C1026	CAP SCR, .62-11 X 2.50 HHGR8	18
28	D0937	PIN, 2.00 X 10.75	3	61	O108	RETAINING RING, 2.00 EXT	12
29	D0938	PIN, 2.00 X 14.25	1	62	O066	BUSHING, GF-3235-32	12
30	D0966	PIN, 2.00 X 12.50	1	63	C0877	BEACON LIGHT (OPTIONAL EQUIPMENT)	1
31	3875	RETAINING RING, 1.00 INT	4	64	2305	FLOOD LIGHT (OPTIONAL EQUIPMENT)	2
32	O110	RETAINING RING, 1.00 EXT	4	65	O492	CAP SCREW .38-16 X .75 HHGR5	16
33	O339	CAP SCR .25-20 X 2.50 HH	2				

CONTROL KIT



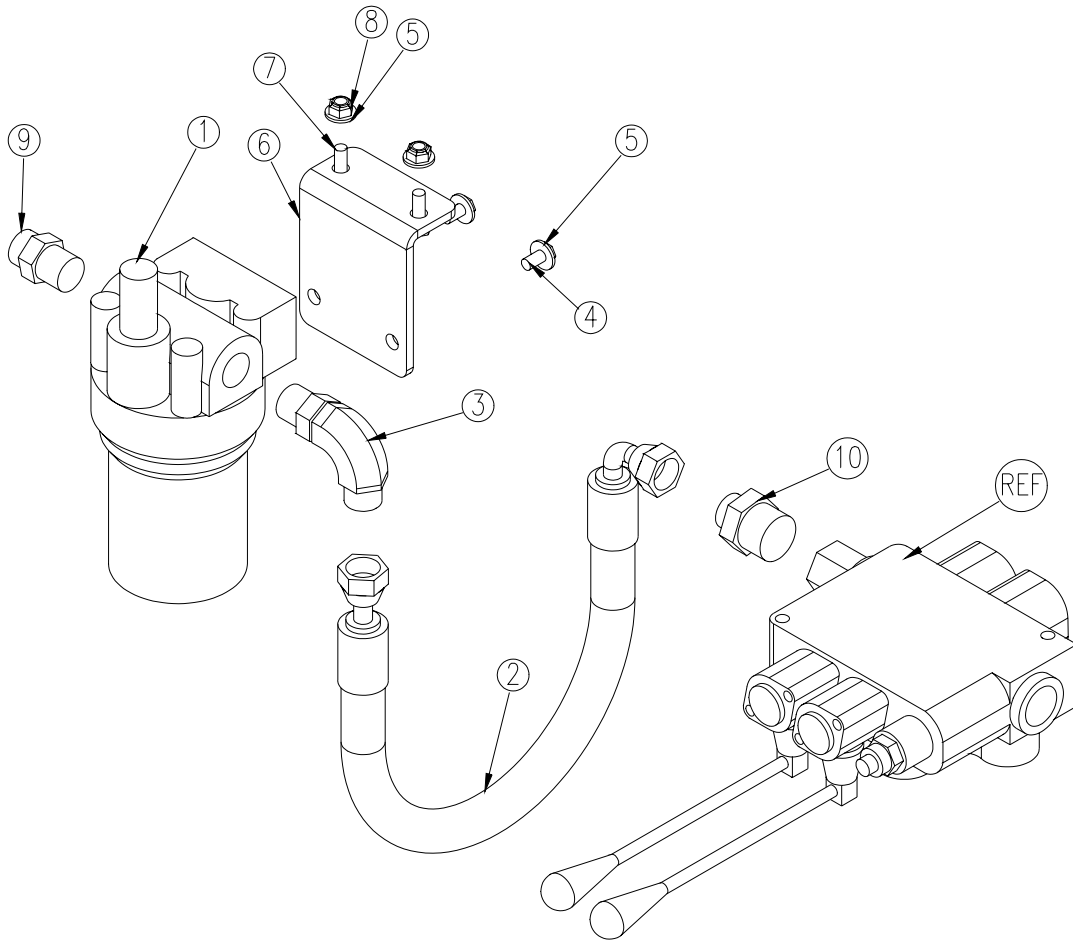
07	12996	WIRE HARNESS PRESSURE SWITCH	1
06	12981	WIRE HARNESS OVERLOAD ALARM	1
05	D0045	OVERLOAD ALARM	1
04	12135	WIRE HARNESS	1
03	11833	TRANSMITTER (PART OF 1)	1
02	11847	RECEIVER (PART OF 1)	1
01	11832	RADIO SYSTEM 4 FUNCTION	1
ITEM	PART No.	DESCRIPTION	QTY

HYDRAULIC KIT



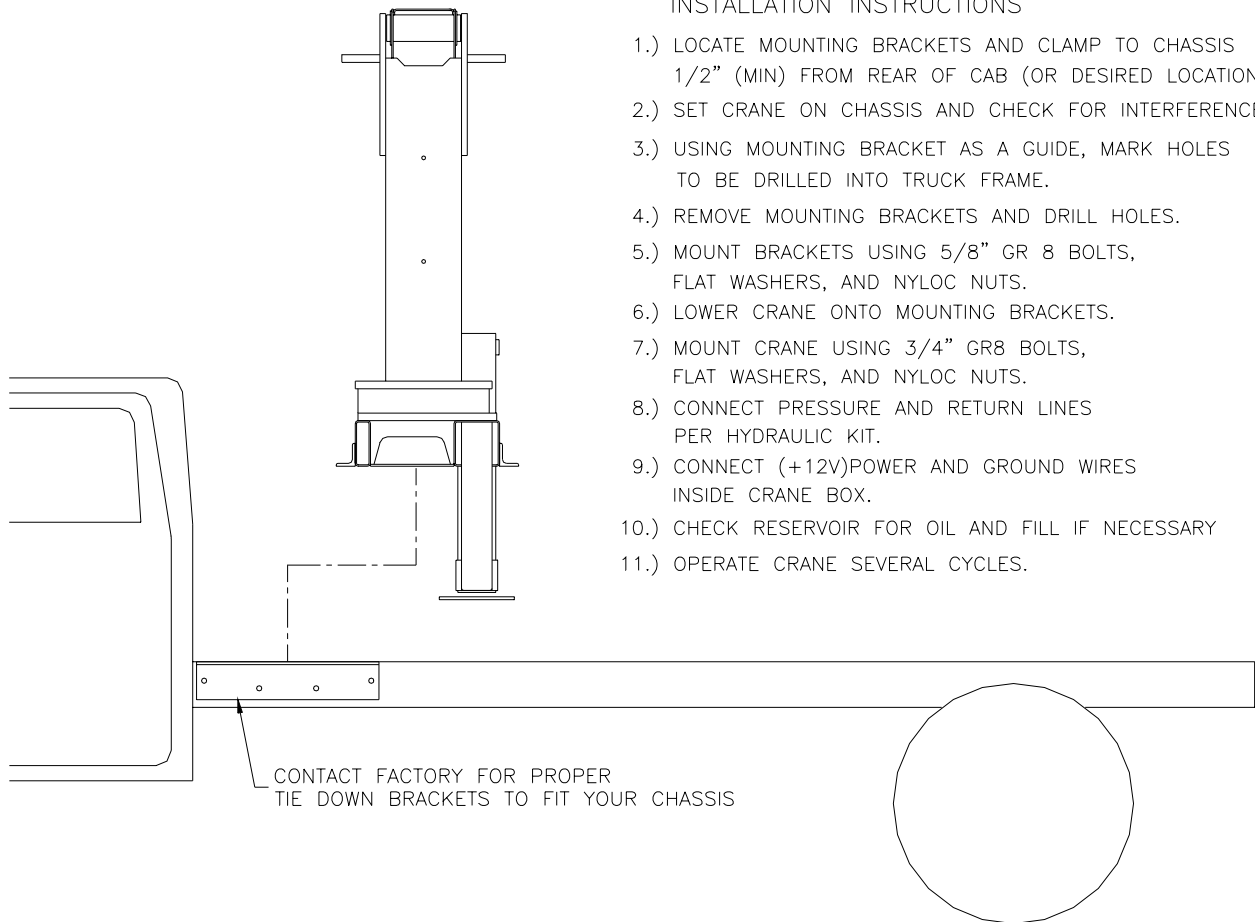
14	C6227	FILTER SHORT	1	28			
13	C6226	FILTER HEAD	1	27	12153	PLUG STR HOLLOW HEX 0.63	
12	7350	FTG ST RUN TEE 8R50LO	2	26	12160	FTG ADAPT 4-8 F50LO	
11	D1291	FTG ADAPT 4-F50LO-S	10	25	6397	GAUGE OIL LF 2.5" 0-5000 CBM	
10	C4922	FTG ADAPT 4-6 F50LO-S	2	24	C1855	FTG ADAPT 6-10	
09	13289	HOSE .50 X 74.00	1REF	23	3338	FTG ADAPT 4-6C50LO	
08	13285	HOSE .25 X 90.00	2REF	22	1554	FTG ADAPT 8-F50LO-S	
07	13286	HOSE .25 X 102.00	2REF	21	C2252	FTG ADAPT SL LOK 8-10-F50LO-S	
06	13288	HOSE .50 X 90.00	1REF	20	12865	FTG ADAPT MSTR/FSTR 6410-L-6-6-1.50	
05	13287	HOSE .38 X 90.00	1REF	19	C1054	NIPPLE 0.75X6.00 BLK PIPE	
04	4536	HOSE .25 X 153.00	2REF	18	C1111	FTG ADAPT MSTR/FSTR 10-6 F50G5	
03	4535	HOSE .25 X 116.00	2REF	17	C2244	FTG ELL 90 DEG	
02	4534	HOSE .25 X 68.00	4REF	16	3861	FTG ML FM O'RING 90 DEG	
01	13284	HOSE KIT 3200	1	15	3862	SWITCH PRES OVERLD	
ITEM	PART No.	DESCRIPTION	QTY	ITEM	PART No.	DESCRIPTION	QTY

HIGH PRESSURE FILTER



ITEM NO.	PART NO.	DESCRIPTION	QTY.
1	10938	FILTER PRESSURE 3200 CRANE MFM	1
2	13187	HOSE 0.38(381-JS-J9-6-6-6-18)	1
3	C5547	FTG STRGHT THRD ELL 6-8-C50LO-S	1
4	10976	CAP SCR 6MMX12MM HHGR8	2
5	5869	WASHER #12 SAE FLAT ZINC	6
6	9684	BRKT HIGH PRESSURE FILTER	1
7	0479	CAP SCR 0.25-20X0.75 HHGR5	2
8	0333	NUT 0.25-20 HHGR5 NYLOC	2
9	C1854	FTG ADAPT 6-8 F50LO-S	1
10	C1855	FTG ADAPT 6-10 F50LO-S	1

INSTALLATION KIT

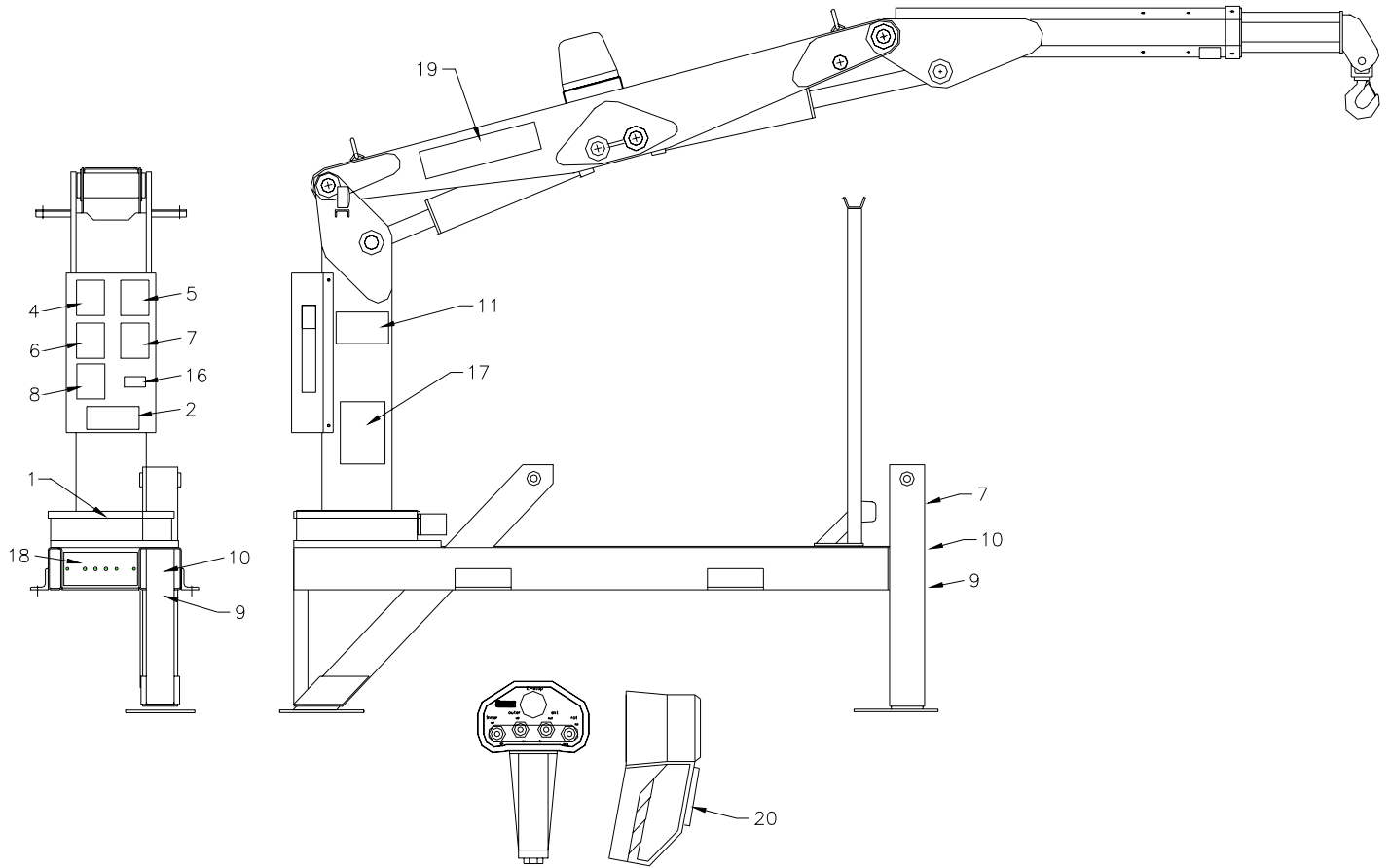


INSTALLATION INSTRUCTIONS

- 1.) LOCATE MOUNTING BRACKETS AND CLAMP TO CHASSIS 1/2" (MIN) FROM REAR OF CAB (OR DESIRED LOCATION).
- 2.) SET CRANE ON CHASSIS AND CHECK FOR INTERFERENCES.
- 3.) USING MOUNTING BRACKET AS A GUIDE, MARK HOLES TO BE DRILLED INTO TRUCK FRAME.
- 4.) REMOVE MOUNTING BRACKETS AND DRILL HOLES.
- 5.) MOUNT BRACKETS USING 5/8" GR 8 BOLTS, FLAT WASHERS, AND NYLOC NUTS.
- 6.) LOWER CRANE ONTO MOUNTING BRACKETS.
- 7.) MOUNT CRANE USING 3/4" GR8 BOLTS, FLAT WASHERS, AND NYLOC NUTS.
- 8.) CONNECT PRESSURE AND RETURN LINES PER HYDRAULIC KIT.
- 9.) CONNECT (+12V)POWER AND GROUND WIRES INSIDE CRANE BOX.
- 10.) CHECK RESERVOIR FOR OIL AND FILL IF NECESSARY
- 11.) OPERATE CRANE SEVERAL CYCLES.

06	C0538	NUT, 0.75-10 NYLOC	4
05	C6219	WASHER, 0.75 FLAT SAE	8
04	4543	CAP SCR, 0.75-10 X 2.00 HHGR8	4
03	2826	NUT, 0.63-11 NYLOC	8
02	C5902	WASHER, 0.63 FLAT SAE	16
01	C1025	CAP SCR, 0.63-11 X 2.00 HHGR8	8
ITEM	PART No.	DESCRIPTION	QTY

DECAL KIT



20	6832	DECAL-MAGNET COVER	1
19	4162	DECAL-IDENTIFICATION	2
18	4158	DECAL-OR PANEL	1
17	4161	DECAL-CAPACITY	2
16	4214	DECAL-SERVICE	1
*15	4305	DECAL-FLOOD LIGHT	1
*14	C0568	DECAL-DIESEL FUEL ONLY	2
*13	C5911	DECAL-STELLAR 2x4.5	3
*12	C5910	DECAL-STELLAR 4x9.5	1
11	C1179	DECAL-ELECTROCUTION 4.5x7.5	2
10	C5918	DECAL-DANGER MOVING O.R.	2
09	C4795	DECAL-DANGER O.R.	2
08	4190	DECAL-DANGER	1
07	C4541	DECAL-DANGER STOWING	2
06	4189	DECAL-DANGER	1
05	C4544	DECAL-DANGER	1
04	C4540	DECAL-DANGER	1
*03	C4545	DECAL-ELECTROCUTION 5x13	4
02	4187	DECAL-ELECTROCUTION 3.25x7.5	1
01	4188	DECAL-ALIGNMENT	1
ITEM	PART No.	DESCRIPTION	QTY

* THESE DECALS NOT SHOWN
(USE WITH BODY PACKAGE)

Limited Warranty Statement

for Stellar Tire Service Trucks, Truck-mounted Cranes, & Truck-mounted Compressed Air Systems ONLY

Stellar Industries, Inc. (Stellar) warrants products designed and manufactured by Stellar to be free from defects in material and workmanship under proper use and maintenance. Products must be installed and operated in accordance with Stellar's written instructions and capacities. The warranty period shall cover the following:

Twelve (12) month warranty on all Stellar designed and fabricated parts, and Ninety (90) days repair labor

The warranty period shall begin from the date recorded by Stellar as the in-service date. This date will be derived from the completed warranty registration card. In the event a warranty registration card is not received by Stellar, the factory ship date will be used. Stellar's obligation under this warranty is limited to, and the sole remedy for any such defect shall be, the repair and/or replacement (at Stellar's option) of the unaltered part and/or component in question. Stellar after-sales service personnel must be notified by telephone, fax, or letter of any warranty-applicable damage within fourteen (14) days of its occurrence. If at all possible, Stellar will ship the replacement part within 24-hours of notification by the most economical, yet expedient, means possible. Expedited freight delivery will be at the expense of the owner.

Warranty claims must be submitted and shall be processed in accordance with Stellar's established warranty claim procedure. Stellar Service personnel must be contacted prior to any warranty claim. A return materials authorization (RMA) account number must be issued to the claiming party prior to the return of any warranty parts. Parts returned without prior authorization will not be recognized for warranty consideration. All damaged parts must be returned to Stellar freight prepaid; freight collect returns will be refused.

Warranty service will be performed by any Stellar new equipment distributor, or by any Stellar-recognized service center authorized to service the type of product involved, or by the Stellar factory in the event of a direct sale. At the time of requesting warranty service, the owner must present evidence of date of delivery of the product. The owner shall be obligated to pay for any overtime labor requested of the servicing company by the owner, any field service call charges, and any towing and/or transportation charges associated with moving the equipment to the designated repair/service provider.

All obligations of Stellar and its authorized dealers and service providers shall be voided if someone other than an authorized Stellar dealer provides other than routine maintenance service without prior written approval from Stellar. In the case repair work is performed on a Stellar-manufactured product, original Stellar parts must be used to keep the warranty in force. The warranty may also be voided if the product is modified or altered in any way not approved, in writing, by Stellar.

The owner/operator is responsible for furnishing proof of the date of original purchase of the Stellar product in question. Warranty registration is the ultimate responsibility of the owner and may be accomplished by the completion and return of the Stellar product registration card provided with the product. If the owner is not sure of registration, he is encouraged to contact Stellar at the address below to confirm registration of the product in question. This warranty covers only defective material and workmanship. It does not cover depreciation or damage caused by normal wear and tear, accident, mishap, untrained operators, or improper or unintended use. The owner has the obligation of performing routine care and maintenance duties as stated in Stellar's written instructions, recommendations, and specifications. Any damage resulting from owner/operator failure to perform such duties shall void the coverage of this warranty. The cost of labor and supplies associated with routine maintenance will be paid by the owner.

The only remedies the owner has in connection with the breach or performance of any warranty on the Stellar product specified are those set above. In no event will Stellar, the Stellar distributor/dealer, or any company affiliated with Stellar be liable for business interruptions, costs of delay, or for any special, indirect, incidental, or consequential costs or damages. Such costs may include, but are not limited to, loss of time, loss of revenue, loss of use, wages, salaries, commissions, lodging, meals, towing, hydraulic fluid, or any other incidental cost.

All products purchased by Stellar from outside vendors shall be covered by the warranty offered by that respective manufacturer only. Stellar does not participate in, or obligate itself to, any such warranty.

Stellar reserves the right to make changes in design or improvement upon its products without imposing upon itself the same upon its products theretofore manufactured.

This warranty will apply to all Stellar Tire Service Trucks, Truck-mounted Cranes, & Truck-mounted Compressed Air Systems shipped from Stellar's factory after January 1, 1997. The warranty is for the use of the original owner only and is not transferable without prior written permission from Stellar.

THIS WARRANTY IS EXPRESSLY IN LIEU OF ANY OTHER WARRANTIES, EXPRESS OR IMPLIED, INCLUDING ANY WARRANTY OF MERCHANTABILITY OR FITNESS FOR A PARTICULAR PURPOSE. REMEDIES UNDER THIS WARRANTY ARE LIMITED TO THE PROVISION OF MATERIAL AND SERVICES, AS SPECIFIED HEREIN. STELLAR INDUSTRIES, INC. IS NOT RESPONSIBLE FOR INCIDENTAL OR CONSEQUENTIAL DAMAGES.

**Stellar Industries, Inc. • 280 West Third Street • Garner, Iowa 50438
U.S.A. Telephone: 800/392-3015; 515/923-3741 • Fax: 515/923-2812; 515/923-2811**

Revised 1/1/97