



CRANE

MODEL 4500

TABLE OF CONTENTS

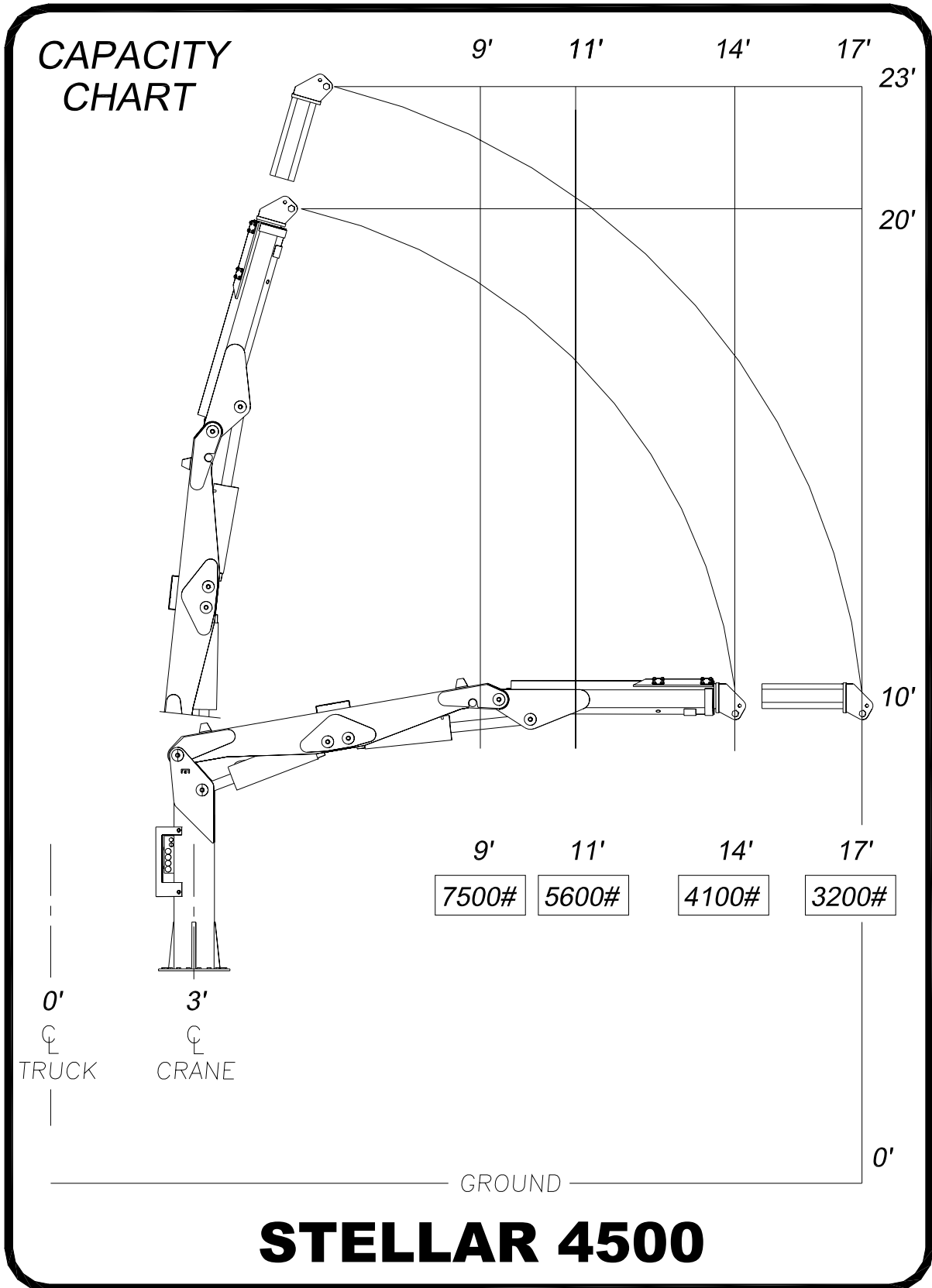
STELLAR CRANE 4500

SPECIFICATION SHEET.....	3
CAPACITY CHART.....	4
CRANE OPERATION	5
MANUAL OPERATION.....	6
BASE ASSEMBLY	7
MAST ASSEMBLY	8
MAIN BOOM ASSEMBLY	9
EXTENSION BOOM ASSEMBLY	10
CONTROL KIT	11
HYDRAULIC KIT.....	12
INSTALLATION KIT	13
DECAL KIT.....	14
LIMITED WARRANTY STATEMENT.....	15

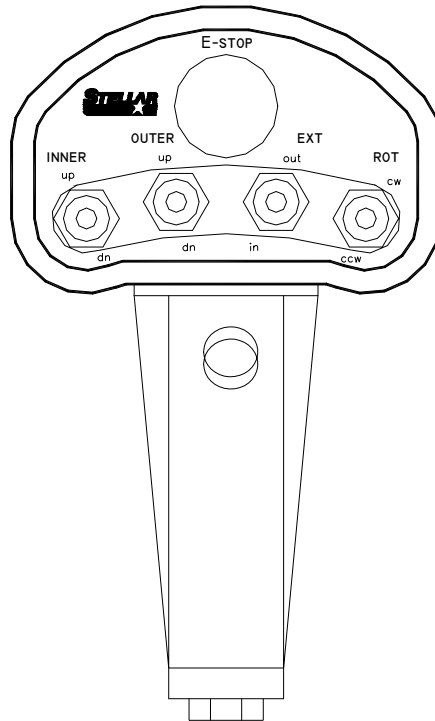
SPECIFICATION SHEET

Crane Rating	45,000 foot/pounds
Standard Boom Length	11 foot-from CL of Crane 14 foot-from CL of Truck
Boom Extension	Hydraulic 32 inches
Maximum Horizontal Reach	14 foot-from CL of Crane 17 foot-from CL of Truck
Maximum Vertical Lift (from truck frame)	20 foot
Inner Lift Cylinder	5 ½ inch bore with integral pilot operated counterbalance valves.
Outer Lift Cylinder	5 ½ inch bore with integral pilot operated counterbalance valves.
Extension Cylinder	3 inch bore with integral pilot operated counterbalance valves.
Rotation	290 degree power (hourglass worm gear)
Lifting Capacities	7,500 pounds @ 9 foot 5,600 pounds @ 11 foot 4,100 pounds @ 14 foot 3,200 pounds @ 17 foot
Power Supply Required	PTO & Pump (5 gpm @ 2800 psi)
Controls	Proportional Radio Controls standard for all functions
Stowed Height (above truck frame)	71 inches
Mounting Space Required	32 inches
Approximate Shipping Weight	2400 pounds

CAPACITY CHART



CRANE OPERATION



CRANE OPERATION

THIS CRANE IS OPERATED BY A RADIO CONTROL SYSTEM WHICH OPERATES AN ELECTRONIC VALVE BANK. THE CONTROLLER (AS SHOWN) OPERATES THE FOLLOWING FUNCTIONS:

- INNER BOOM UP & DOWN
- OUTER BOOM UP & DOWN
- EXTENSION BOOM IN & OUT
- ROTATION CW & CCW

TO OPERATE THE CRANE ACTIVATE THE DESIRED TOGGLE SWITCH. THE CRANE WILL NOT FUNCTION UNTIL THE TRIGGER ON THE REMOTE HANDLE IS ACTIVATED. THE CRANE SPEED WILL CHANGE AS THE TRIGGER IS PULLED OR RELEASED.

NOTE: IF THE CRANE DOES NOT OPERATE CHECK THE BATTERIES LOCATED IN THE REMOTE HANDLE AND REPLACE IF NECESSARY.

MANUAL OPERATION

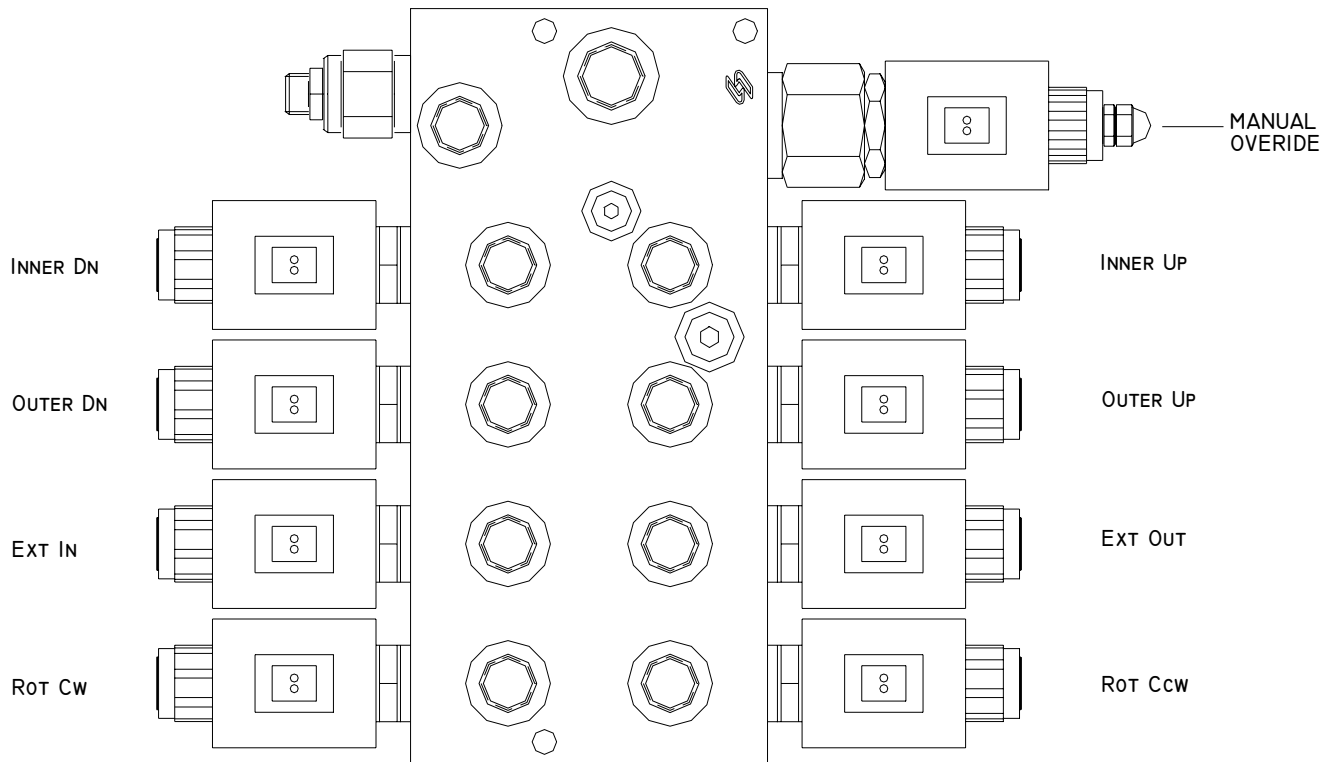
IN CASE OF RADIO FAILURE THE CRANE CAN BE OPERATED USING THE MANUAL OVERRIDES LOCATED ON THE VALVE BANK. USE THE MANUAL OVERRIDES **ONLY** TO GET THE CRANE INTO A STOWED POSITION FOR TRAVEL. HAVE THE EQUIPMENT SERVICED FOR NORMAL RADIO USE.

-WARNING-

PROLONGED MANUAL OPERATION WILL CAUSE SEVERE DAMAGE TO THE HYDRAULIC SYSTEM.

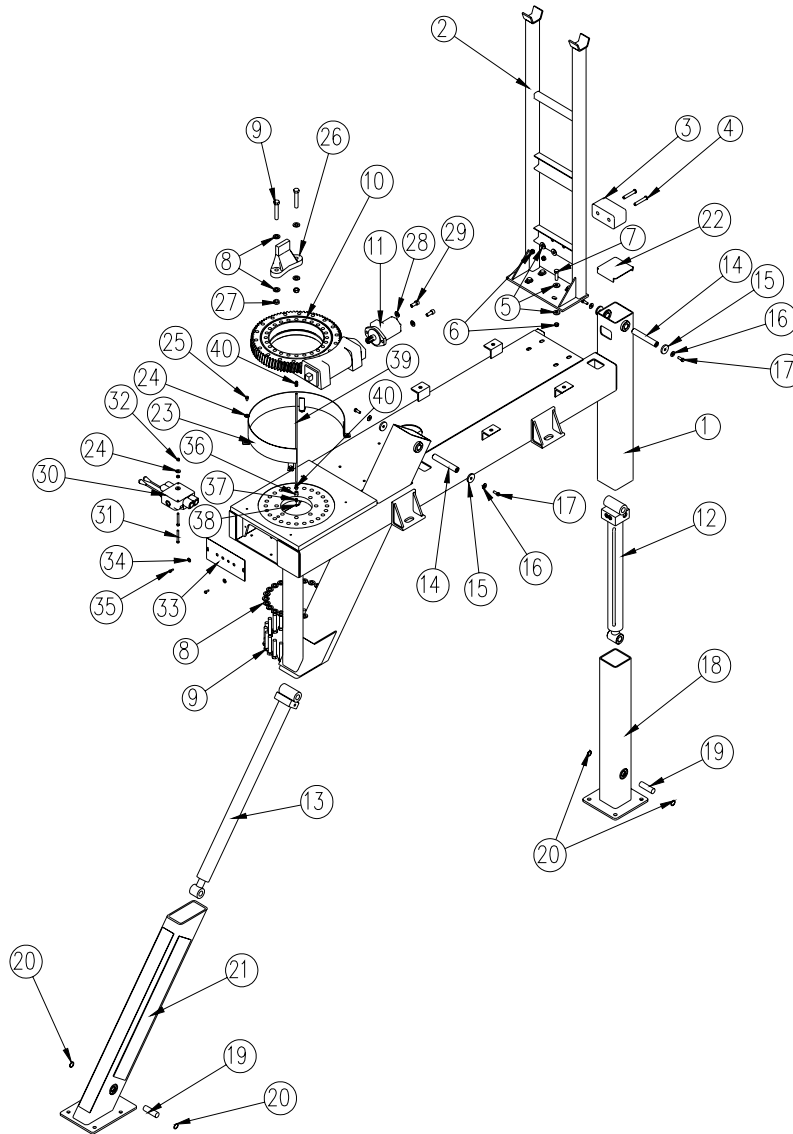
TO OPERATE CRANE MANUALLY:

- 1.) LOOSEN JAM NUT ON FLOW CONTROL.
- 2.) TURN THE SET SCREW FULLY CLOCKWISE.
- 3.) OPERATE FUNCTIONS AS NEEDED TO STOW CRANE BY PUSHING ON THE END OF THE SOLENOID.
- 4.) RESTORE MANUAL OVERRIDE VALVE TO ORIGINAL POSITION.
- 5.) HAVE UNIT SERVICED.



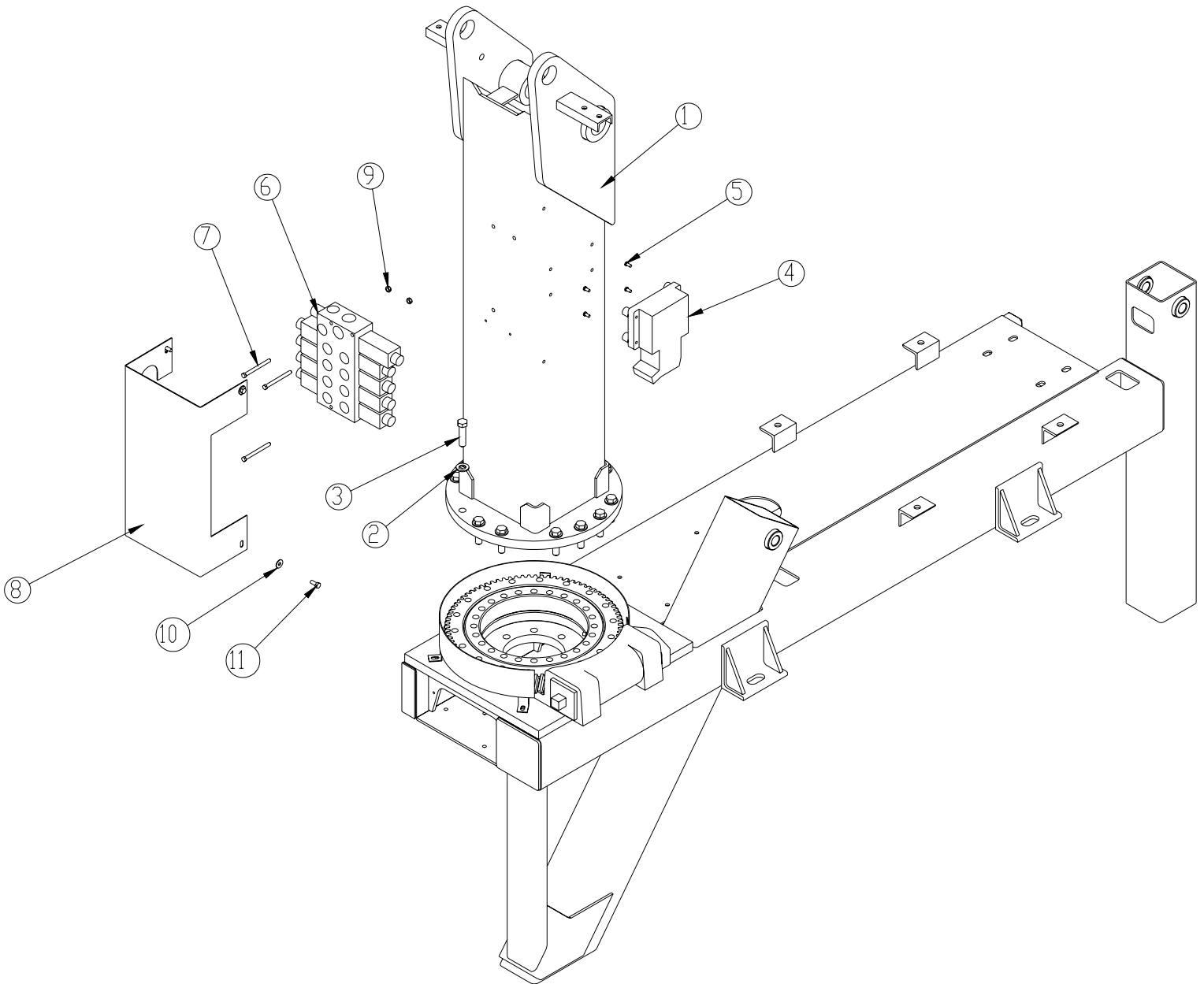
BASE ASSEMBLY

P/N 20049



ITEM NO.	PART NO.	DESCRIPTION	QTY.	ITEM NO.	PART NO.	DESCRIPTION	QTY.
1	19894	BASE 4500	1	21	4817	OUTRIGGER LEG SS 6000	1
2	12648	SADDLE, 2200 NON ADJUSTABLE	1	22	19248	OUTRIGGER CAP ASM	1
3	3945	BUMPER DOCK 3X3.38X6	1	23	D1728	GUARD TTB 2120 CRANE	1
4	0504	CAP SCR 0.50-13X3.00 HHGR5	2	24	0343	WASHER 0.31 FLAT	6
5	0352	WASHER 0.50 USS FLAT ZINC	10	25	0484	CAP SCR 0.31-18 X 0.50 HHGR5	4
6	C6106	NUT 0.50-13 HHGR5 NYLOC	6	26	4074	STOP ROTATION 3200	1
7	0500	CAP SCR 0.50-13X1.75 HHGR5	4	27	2826	NUT 0.63-11 HH NYLOC	2
8	C5902	WASHER 0.63 FLAT GR8	28	28	D0790	WASHER 0.50 FLAT GR8	2
9	D1312	CAP SCR 0.63-11X3.50 HHGR8	26	29	D1307	CAP SCR 0.50-13X1.25 SH	2
10	D0955	BEARING SWING DRIVE S-SW-65-85-A-R	1	30	10974	VB 2 SECT W/PB BM40/2-FU-MOA1X2	1
11	D1453	MOTOR HYD ROSS MK080613AAAB	1	31	0489	CAP SCR 0.31-18X2.50 HHGR5	2
12	3783	CYLINDER 2.00X18.75	1	32	0342	NUT 0.31-18 HH NYLOC	2
13	D0773	CYLINDER 2.00X25.50	1	33	4082	PLATE SWITCH MTG 3214	1
14	11688	PIN 1.00X6.25D&T	2	34	0340	WASHER 0.25 FLAT	2
15	9320	PIN CAP 0.44X1.75X0.25 SS	4	35	0479	CAP SCR 0.25-20X0.75 HHGR5	2
16	C6353	WASHER 0.38 FLAT GR8	4	36	C2256	FTG COUPLER PIPE 0.13	1
17	13573	CAP SCR 0.38-16X1.00 HHGR8	4	37	c1592	ZERK 1/8 NPT STRAIGHT	1
18	4816	OUTRIGGER LEG CS 6000	1	38	C4808	CAP PLASTIC (RED)	1
19	4912	PIN 1.00X3.25	2	39	D1810	TBE AIR SAEJ844 TYPE A .25	1
20	3875	SNAP RING 1.00 INTERNAL	4	40	D1345	FTG CPRSN 0.12NPT/0.25 TUBE	2

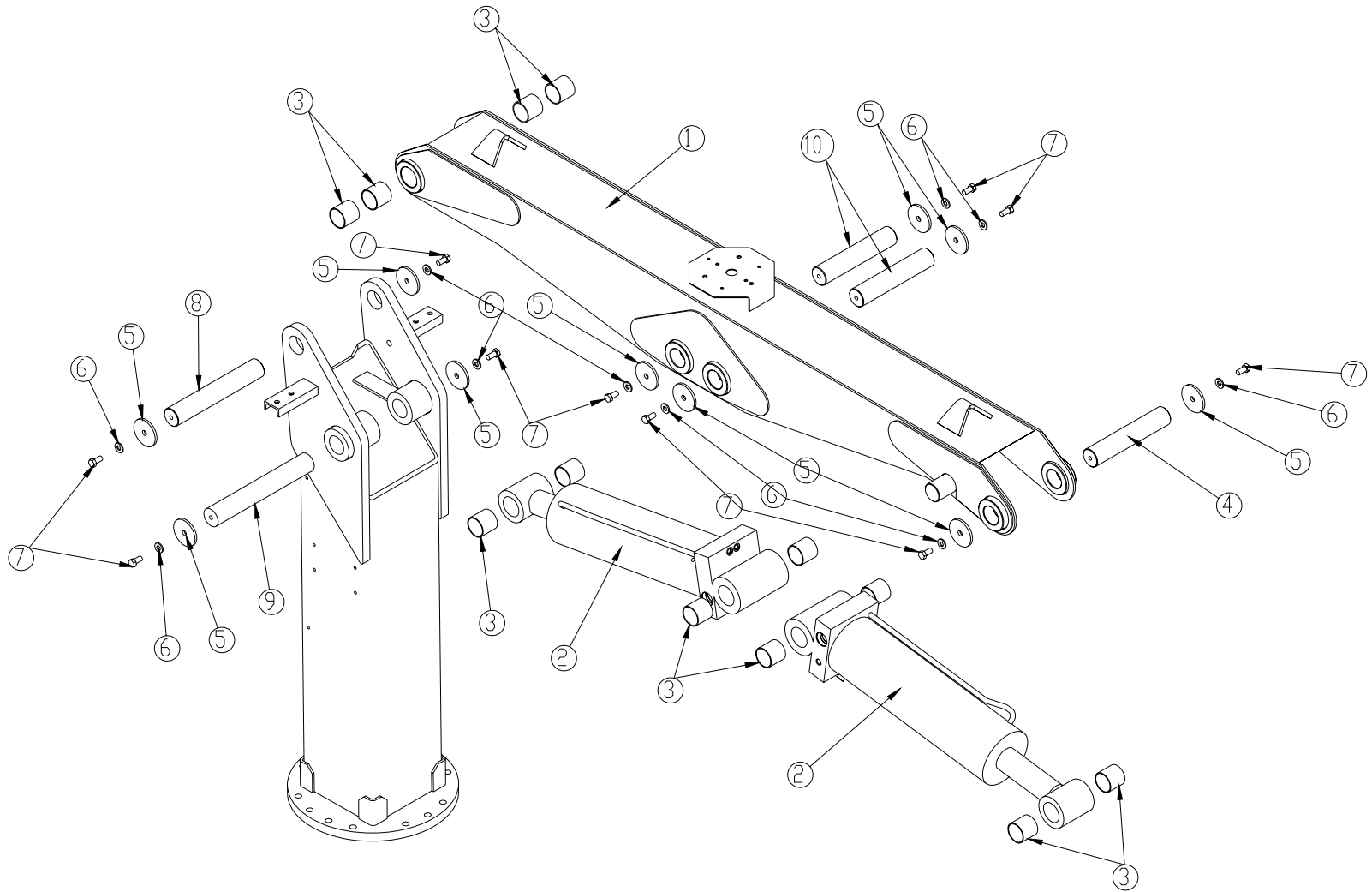
MAST ASSEMBLY P/N 20050



ITEM	PART	DESCRIPTION	QTY.	ITEM	PART	DESCRIPTION	QTY.
1	19889	MAST 4500	1	7	0490	CAP SCR 0.31-18X3.50 HHGR5	3
2	C5902	WASHER 0.63 FLAT GR8	14	8	20437	GUARD VB 4500	1
3	C1026	CAP SCR 0.63-11X2.50 HHGR8 ZY	14	9	0342	NUT 0.31-18 HH NYLOC	3
4	11847	RADIO RECEIVER	1	10	0343	WASHER 0.31 FLAT	4
5	10976	CAP SCR 6MMX12MM HHGR8	4	11	0420	CAP SCR 0.31-18X0.75 HHGR5	4
6	11761	VB 4 SECT ELECT W/PROP VLV COMMAND	1				

MAIN BOOM ASSEMBLY

P/N 20051

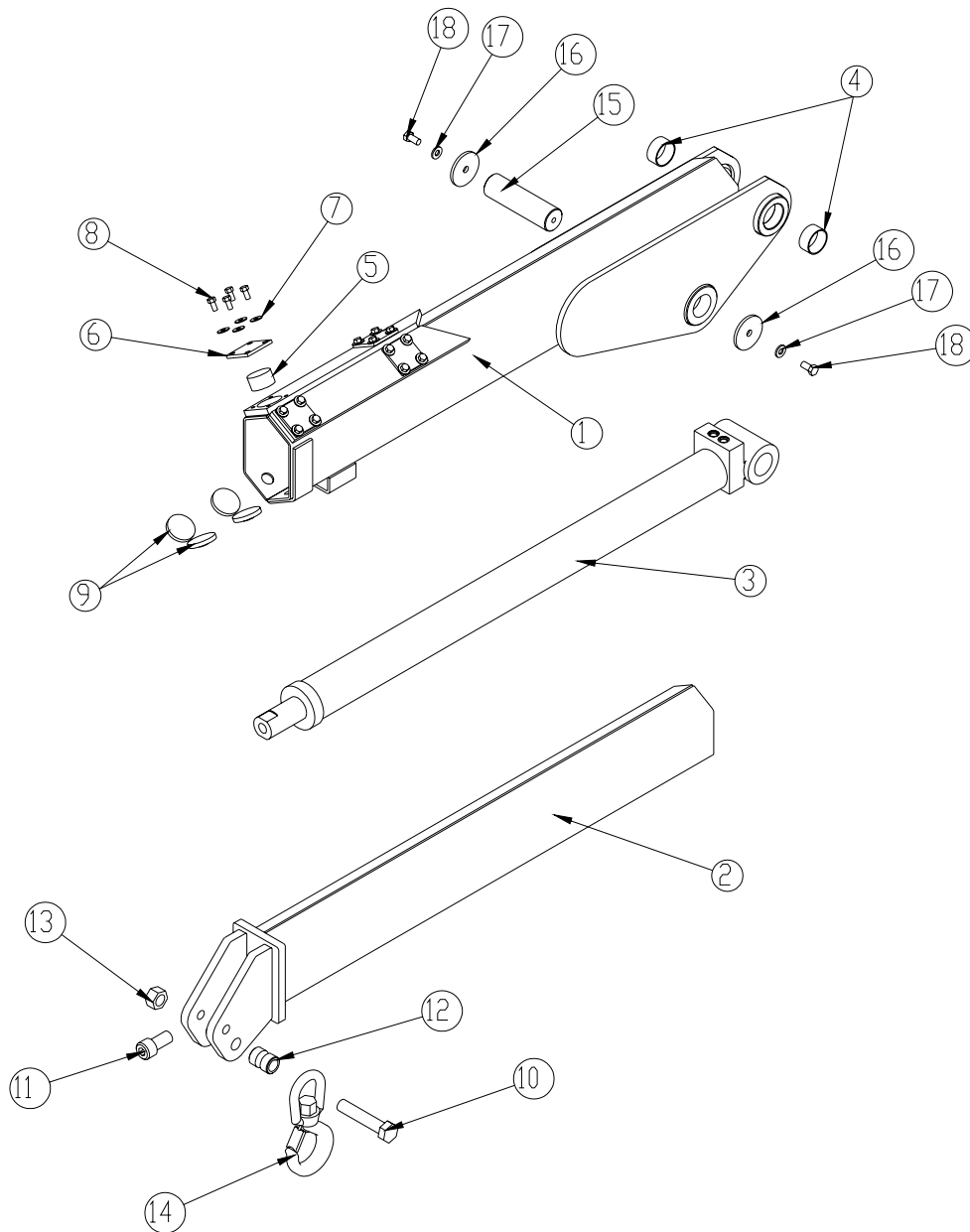


NOTE: CYLINDER BUSHING FOR REFERENCE ONLY

ITEM	PART	DESCRIPTION	QTY.	ITEM	PART	DESCRIPTION	QTY.
1	19887	INNER BOOM 4500 CRANE	1	6	D0790	WASHER 0.50 FLAT GR8	10
2	20047	CYLINDER 5.50x16.00	2	7	10172	CAP SCR 0.50-13x1.00 HHGR8 ZY	10
3	0066	BUSHING QSI-3235-32	4	8	20042	PIN 2.00x12.13 D&T	1
4	20043	PIN 2.00x10.38 D&T	1	9	11849	PIN 2.00x13.50 D&T	1
5	5145	PIN CAP 0.56x3.00x.25	10	10	14189	PIN 2.00x10.00 D&T	2

EXTENSION BOOM ASSEMBLY

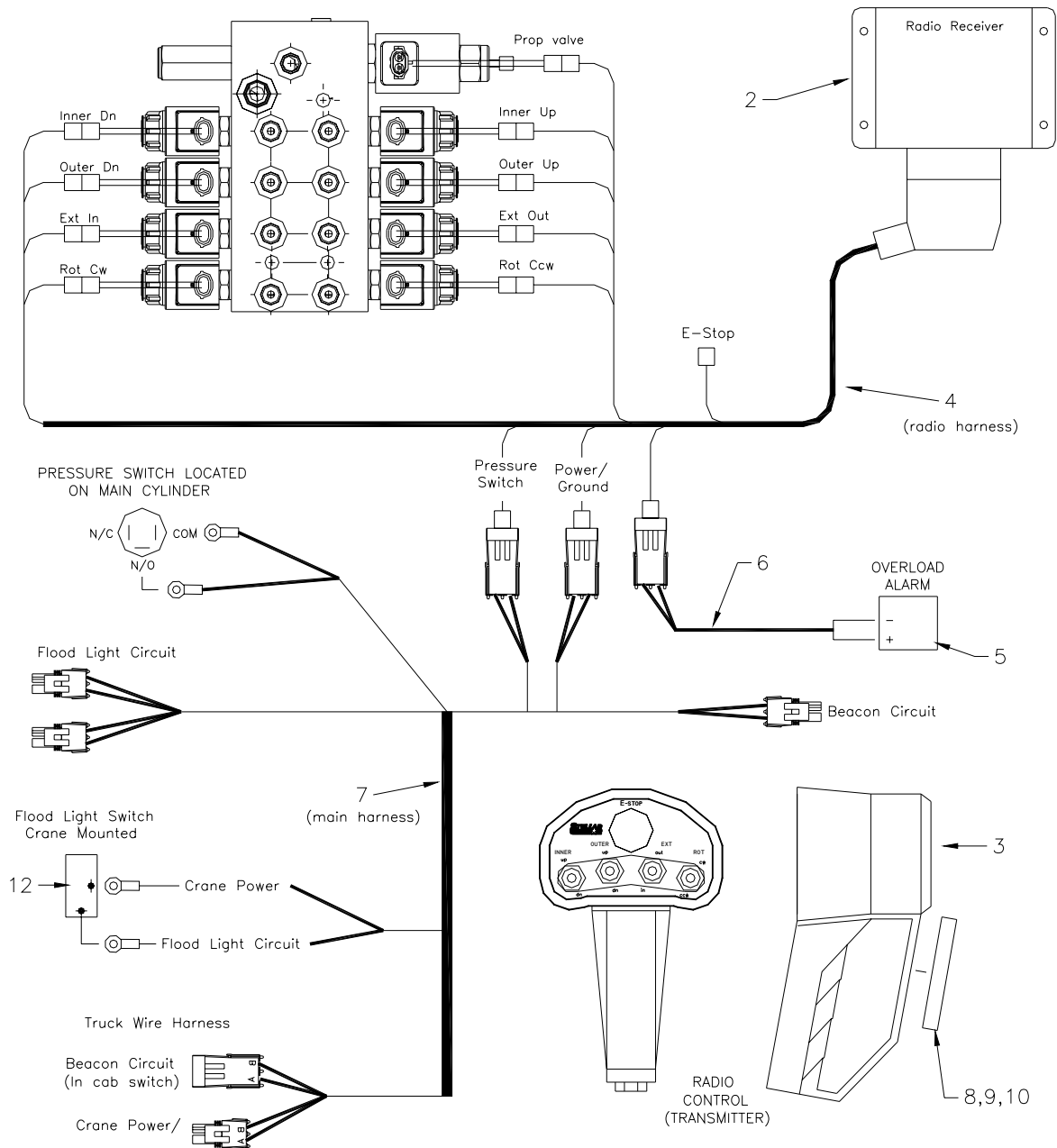
P/N 20052



ITEM	PART	DESCRIPTION	QTY.	ITEM	PART	DESCRIPTION	QTY.
1	19882	OUTER BOOM 4500	1	10	4541	CAP SCR 1.00-8X5.00 HHGR5	1
2	19876	EXT BOOM 4500	1	11	21154	CAP SCR 1.00-8X2.00 SHGR8 ZY	1
3	4658	CYLINDER EXT 60 SERIES	1	12	4485	BUSHING HOOK 3200	1
4	8819	BUSHING QSI-3235-16	2	13	0991	NUT 1.00 HH NYLOC	1
5	9363	WEAR PAD 1.12X2.00 RND NYLATRON	4	14	3863	HOOK 5 TON	1
6	9361	PLATE WEAR PAD COVER 3200	4	15	14190	PIN 2.00X7.00 D&T	1
7	C6353	WASHER 0.38 FLAT GR8	16	16	5145	PIN CAP 0.56X3.00X.25	2
8	9843	CAP SCR 0.38-16X0.75 HHGR8	16	17	D0790	WASHER 0.50 FLAT GR8	2
9	6252	WEAR PAD 0.34X2.50 RND NYLATRON	4	18	10172	CAP SCR 0.50-13X1.00 HHGR8 ZY	2

CONTROL KIT

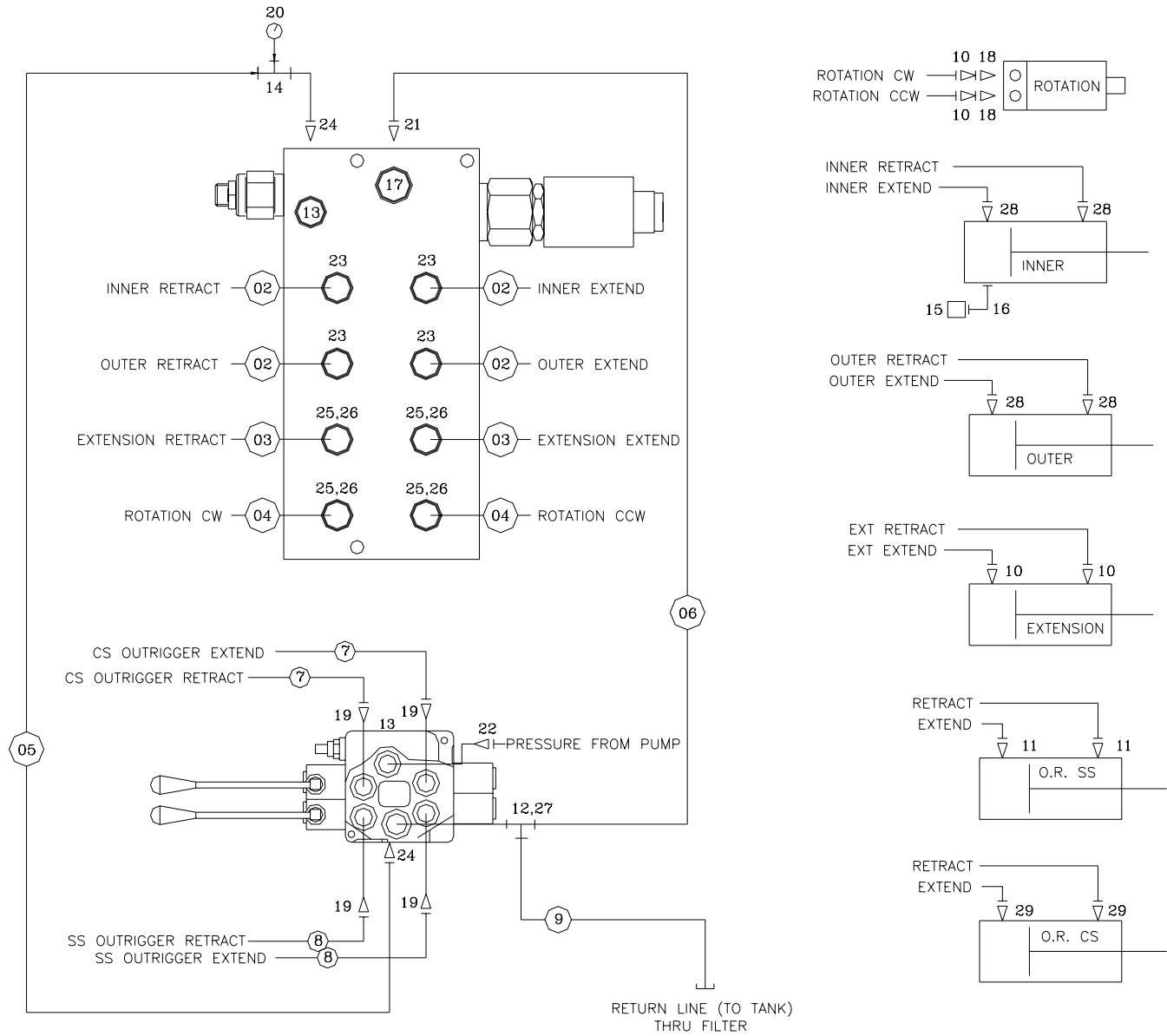
P/N 12484



1	11832	RADIO SYSTEM 4 FUNCTION	1
2	11847	RECEIVER (PART OF 1)	1
3	11833	TRANSMITTER (PART OF 1)	1
4	12135	WIRE HARNESS - RADIO	1
5	D0045	OVERLOAD ALARM	1
6	12981	WIRE HARNESS - OVERLOAD ALARM	1
7	19076	WIRE HARNESS - CRANE	1
8	6629	MAGNET	1
9	D1711	CAP SCR #10-24X0.50 BTNHD SS	1
10	C4956	NUT #10-24 HH NYLOC SS	1
11	16255	BATTERY CHARGER W/BTRY 110-3.6V B&D	1
12	C4815	SWITCH TOGGLE ON/OFF	1

HYDRAULIC KIT

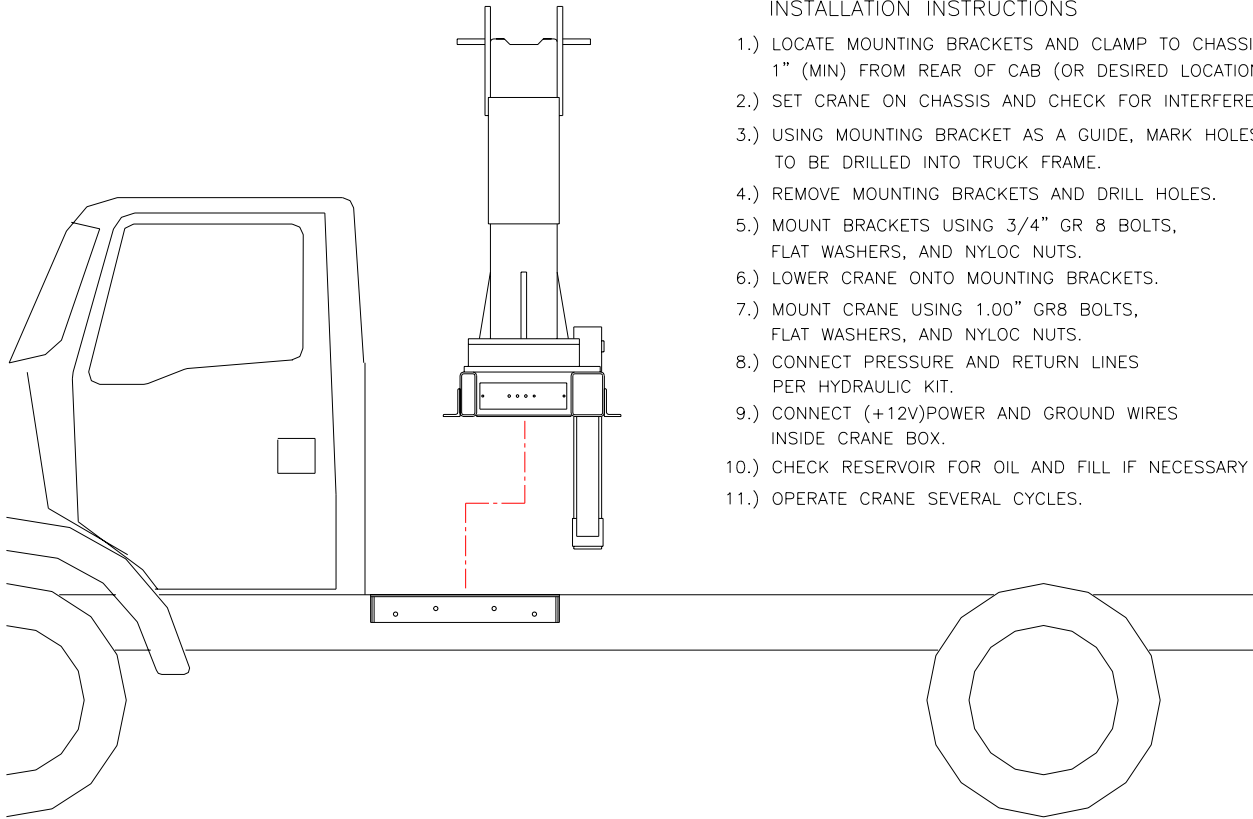
P/N 20441



ITEM	PART No.	DESCRIPTION	QTY	ITEM	PART No.	DESCRIPTION	QTY
15	3862	SWITCH PRES OVERLID	1	29	C5572	FTG ORFS/OBR 45 DG ELL 4-V50LO	2
14	C0885	FTG ADAPT MSTR/FSTR 8-6 F50G5	1	28	0279	FTG ADAPT 6-F50LO-S	4
13	D1535	PLUG STR HOLLOW HEX 0.50 8-HP50N	1	27	14441	FTG ADAPT MSTR/FSTR 10-8 F50G5	1
12	7350	FTG ST RUN TEE 8R50LO	1	26	10980	FTG ADAPT MSTR/FSTR 6410-8-4	4
11	D1291	FTG ADAPT 4-F50LO-S	2	25	C1198	FTG ADAPT 4-C50LO-S	4
10	C4922	FTG ADAPT 4-6 F50LO-S	4	24	C1854	FTG ADAPT 6-8 F50LO-S	2
09	13289	HOSE .50 X 76.00	1 REF	23	C5547	FTG MF/MSTR 90 6-8 C50LO-S	4
08	13022	HOSE .25 X 73.00	2 REF	22	1554	FTG ADAPT 8-F50LO-S	1
07	13286	HOSE .25 X 102.00	2 REF	21	C2252	FTG ADAPT SL LOK 8-10-F50LO-S	1
06	13288	HOSE .50 X 91.00	1 REF	20	6397	GAUGE OIL LF 2.5" 0-5000 CBM	1
05	13287	HOSE .38 X 90.00	1 REF	19	12160	FTG ADAPT 4-8 F50LO	4
04	4536	HOSE .25 X 153.00	2 REF	18	C1111	FTG ADAPT MSTR/FSTR 10-6 F50G5	2
03	20444	HOSE .25 X 124.00	2 REF	17	12153	PLUG STR HOLLOW HEX 0.63	1
02	12999	HOSE .38 X 72.00	4 REF	16	3861	FTG ML FM O-RING 90 DEG	1
01	20443	HOSE KIT 4500	1				

INSTALLATION KIT

P/N 5195



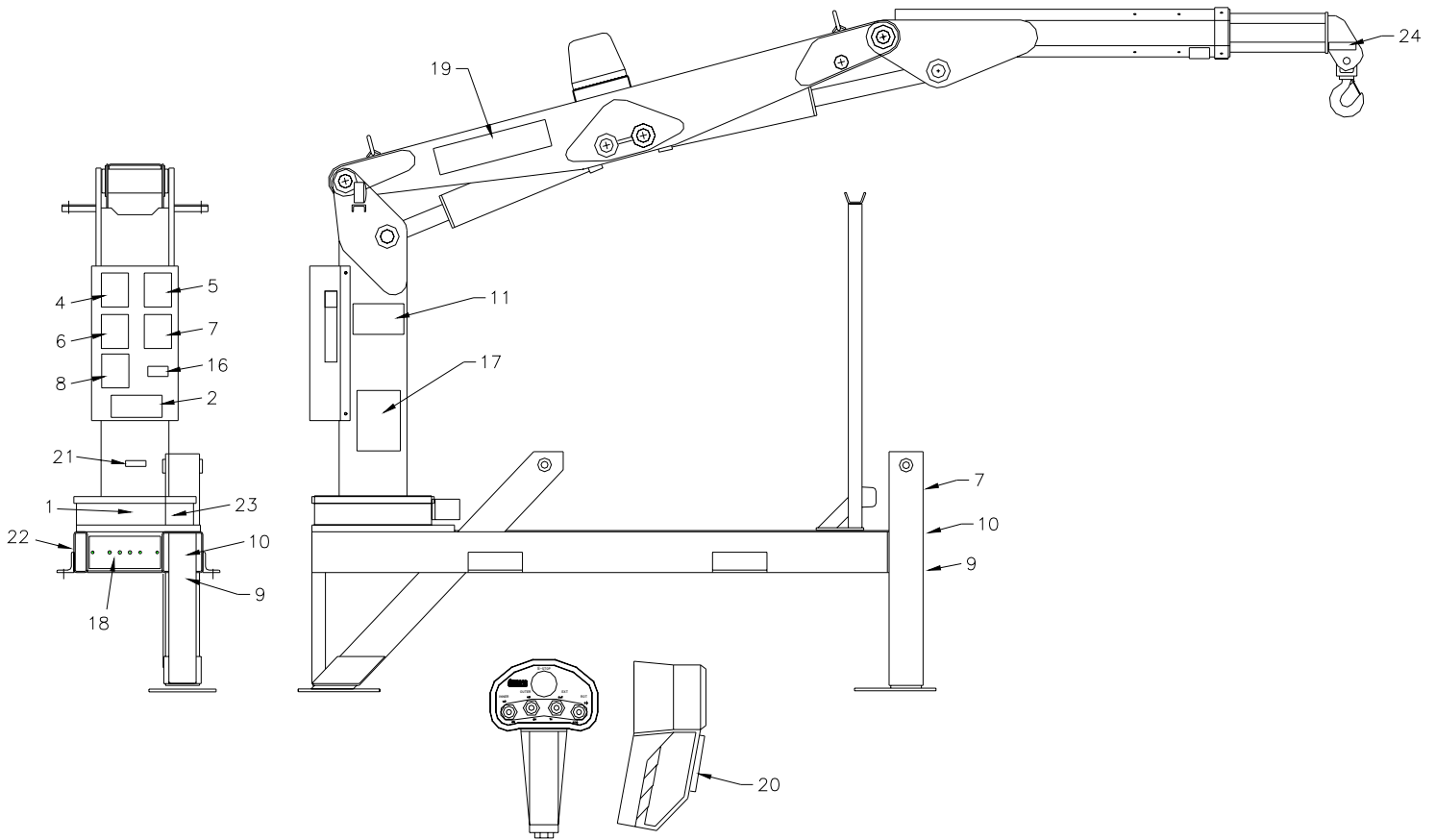
INSTALLATION INSTRUCTIONS

- 1.) LOCATE MOUNTING BRACKETS AND CLAMP TO CHASSIS 1" (MIN) FROM REAR OF CAB (OR DESIRED LOCATION).
- 2.) SET CRANE ON CHASSIS AND CHECK FOR INTERFERENCES.
- 3.) USING MOUNTING BRACKET AS A GUIDE, MARK HOLES TO BE DRILLED INTO TRUCK FRAME.
- 4.) REMOVE MOUNTING BRACKETS AND DRILL HOLES.
- 5.) MOUNT BRACKETS USING 3/4" GR 8 BOLTS, FLAT WASHERS, AND NYLOC NUTS.
- 6.) LOWER CRANE ONTO MOUNTING BRACKETS.
- 7.) MOUNT CRANE USING 1.00" GR8 BOLTS, FLAT WASHERS, AND NYLOC NUTS.
- 8.) CONNECT PRESSURE AND RETURN LINES PER HYDRAULIC KIT.
- 9.) CONNECT (+12V)POWER AND GROUND WIRES INSIDE CRANE BOX.
- 10.) CHECK RESERVOIR FOR OIL AND FILL IF NECESSARY
- 11.) OPERATE CRANE SEVERAL CYCLES.

ITEM	PART	DESCRIPTION	QTY.
1	5138	TIE DOWN, 6000 CRANE	2
2	C1028	CAP SCR 0.75-10 X 3.00 HHGR8	8
3	C6219	WASHER FLAT 0.75 SAE	16
4	C0538	NUT 0.75-10 NYLOC	8
5	5199	CAP SCR 1.00-8 X 3.00 HHGR8	4
6	6538	WASHER 1.00 FLAT SAE	8
7	6294	NUT 1.00-8 NYLOC	4

DECAL KIT

P/N 20054



* THESE DECALS NOT SHOWN
(USE WITH BODY PACKAGE)

ITEM	PART	DESCRIPTION	QTY.	ITEM	PART	DESCRIPTION	QTY.
1	4188	DECAL ROTATIONAL ALIGNMENT	1	13	C5911	DECAL STELLAR LOGO 2.00X4.50	3
2	4187	DECAL DANGER REMT ELECTROCUTN LARGE	1	14	C0568	DECAL DIESEL ONLY	2
3	C4545	DECAL DANGER ELECTROCUTION	4	15	4305	DECAL FLOOD LIGHTS 1.13X0.88	1
4	C4540	DECAL DANGER	1	16	4214	DECAL CONTACT STELLAR	1
5	C4544	DECAL CAUTION	1	17	20038	DECAL CAPACITY 4500	2
6	4189	DECAL DANGER OPERATION RESTRICTION	1	18	4158	DECAL 3200 PANEL	1
7	C4541	DECAL WARNING	2	19	20055	DECAL IDENTIFICATION 4500	2
8	4190	DECAL DANGER OPERATION CONDITION	1	20	6832	DECAL MAGNET COVER-2.94DIA	1
9	C4795	DECAL DANGER FOOT	2	21	15172	DECAL ASME/ANSI B30.22/B30.5	1
10	C5918	DECAL CAUTION STAND CLEAR	2	22	8996	DECAL OUTRIGGER UP & DOWN	1
11	C1179	DECAL DANGER ELECTROCUTION HORTL	2	23	9188	DECAL WORM GEAR LUBRICATION	1
12	C5910	DECAL STELLAR LOGO 4.00X9.50	1	24	16973	DECAL USE STELLAR APPROVED ATTACHMT	2

Limited Warranty Statement

for Stellar Tire Service Trucks, Truck-mounted Cranes, Truck-mounted Stellarc Welders & Truck-mounted Compressed Air Systems ONLY

Stellar Industries, Inc. (Stellar) warrants products designed and manufactured by Stellar to be free from defects in material and workmanship under proper use and maintenance. Products must be installed and operated in accordance with Stellar's written instructions and stated lifting capacities. The warranty period shall be Twelve (12) month warranty on all Stellar designed and fabricated parts, and Ninety (90) days repair labor.

The warranty period shall begin from the date recorded by Stellar as the in-service date. This date will be derived from the completed warranty registration card. In the event a warranty registration card is not received by Stellar, the factory ship date will be used. Stellar's obligation under this warranty is limited to, and the sole remedy for any such defect shall be, the repair and/or replacement (at Stellar's option) of the part and/or component in question. Stellar after-sales service personnel must be notified by telephone, fax, e-mail, or mail of any warranty-applicable damage within fourteen (14) days of its occurrence. If at all possible, Stellar will ship the replacement part within 24-hours of notification by the most economical, yet expedient, means possible. Expedited freight delivery will be at the expense of the owner.

Warranty claims must be submitted and shall be processed in accordance with Stellar's established warranty claim procedure. Stellar Service personnel must be contacted prior to any warranty claim. A return materials authorization (RMA) account number must be issued to the claiming party prior to the return of any warranty parts. Parts returned without prior authorization will not be recognized for warranty consideration. All damaged parts must be returned to Stellar freight prepaid; freight collect returns will be refused.

Warranty service will be performed by any Stellar new equipment distributor, or by any Stellar-recognized service center authorized to service the type of product involved, or at the Stellar factory. At the time of requesting warranty service, the owner must present evidence of date of delivery of the product. The owner shall be obligated to pay for any overtime labor requested of the servicing company by the owner, any field service call charges, and any towing and/or transportation charges associated with moving the equipment to the designated repair/service provider.

All obligations of Stellar and its authorized dealers and service providers shall be voided if someone other than an authorized Stellar dealer provides other than routine maintenance service without prior written approval from Stellar. In the case repair work is performed on the Stellar-manufactured product, original Stellar parts must be used to keep the warranty in force. The warranty may also be voided if the product is modified or altered in any way not approved, in writing, by Stellar engineering.

The owner/operator is responsible for furnishing proof of the date of original purchase of the Stellar product in question. Warranty registration is the ultimate responsibility of the owner and may be accomplished by the completion and return of the Stellar product registration card provided with the product. If the owner is unsure of registration, he is encouraged to contact Stellar at the address below to confirm registration of the product in question. This warranty covers only defective material and workmanship. It does not cover depreciation or damage caused by normal wear and tear, accident, mishap, untrained operators, or improper or unintended use. The owner has the obligation of performing routine care and maintenance duties as stated in Stellar's written instructions, recommendations, and specifications. Any damage resulting from owner/operator failure to perform such duties shall void the coverage of this warranty. The cost of labor and supplies associated with routine maintenance will be paid by the owner.

The only remedies the owner has in connection with the breach or performance of any warranty on the Stellar product specified are those set above. In no event will Stellar, the Stellar distributor/dealer, or any company affiliated with Stellar be liable for business interruptions, costs of delay, or for any special, indirect, incidental, or consequential costs or damages. Such costs may include, but are not limited to, loss of time, loss of revenue, loss of use, wages, salaries, commissions, lodging, meals, towing, hydraulic fluid, or any other incidental cost.

All products purchased by Stellar from outside vendors shall be covered by the warranty offered by that respective manufacturer only. Stellar does not participate in, or obligate itself to, any such warranty.

Hydraulic cylinders used in Stellar products are subject to the same warranty provisions stated above. Should a cylinder defect develop within the above stated warranty period, notify Stellar immediately. Stellar will ship, freight prepaid, by the most effective, expedient, means a new or re-manufactured cylinder of the same size and type. An authorization for return of the original part will be issued at the time the order is placed. The defective cylinder is to be returned to Stellar freight prepaid by the owner. Cylinders returned freight collect will be refused. Should the defective cylinder not be returned within 30 days of shipping the replacement cylinder, the owner is responsible to pay Stellar the full purchase price of the replacement part.

Stellar reserves the right to make changes in design or improvement upon its products without imposing upon itself the same upon its products theretofore manufactured.

This warranty will apply to all Stellar Tire Service Trucks, Truck-mounted Cranes, Truck-mounted Stellarc Welders & Truck-mounted Compressed Air Systems shipped from Stellar's factory after January 1, 1997. The warranty is for the use of the original owner only and is not transferable without prior written permission from Stellar.

THIS WARRANTY IS EXPRESSLY IN LIEU OF ANY OTHER WARRANTIES, EXPRESS OR IMPLIED, INCLUDING ANY WARRANTY OF MERCHANTABILITY OR FITNESS FOR A PARTICULAR PURPOSE. REMEDIES UNDER THIS WARRANTY ARE LIMITED TO THE PROVISION OF MATERIAL AND SERVICES, AS SPECIFIED HEREIN. STELLAR INDUSTRIES, INC. IS NOT RESPONSIBLE FOR INCIDENTAL OR CONSEQUENTIAL DAMAGES.

Stellar Industries, Inc. • 280 West Third Street • Garner, Iowa 50438 • U.S.A.
E-Mail • sales@stellar-industries.com
Telephone: 800/321-3741; 641/923-3741 • Fax: 641/923-2812; 641/923-2811

Revised 10/05/2000