



CRANE MODEL 6000

280 W. 3rd St., Box 169 • Garner, IA 50438 • Phone: 641-923-3741 • Fax: 641-923-2812

UPDATED 01/23/03

TABLE OF CONTENTS

STELLAR CRANE 6000

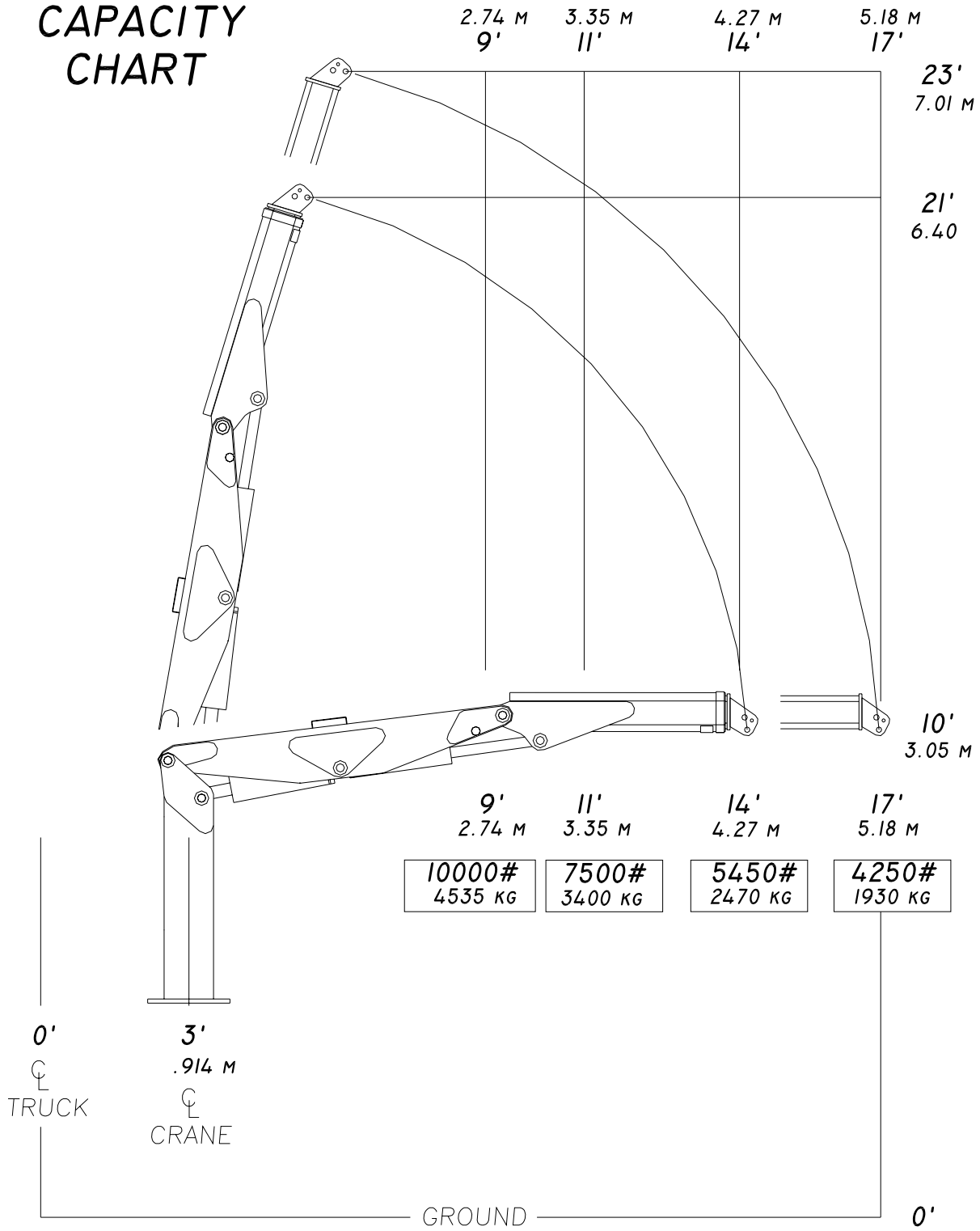
PAGE	DESCRIPTION
3.)	SPECIFICATION SHEET
4.)	CAPACITY CHART
5.)	CRANE OPERATION
6.)	MANUAL OPERATION
7.)	BASE ASSEMBLY
8.)	MAST ASSEMBLY
9.)	MAIN BOOM ASSEMBLY
10.)	EXTENSION BOOM ASSEMBLY
11.)	CONTROL KIT
12.)	HYDRAULIC KIT
13.)	INSTALLATION KIT
14.)	DECAL KIT
15.)	WARRANTY

SPECIFICATION SHEET

Crane Rating	60,000 ft-lbs (8.30 ton-meters)
Standard Boom Length	11'(3.35 m) -from CL of Crane 14'(4.27 m)-from CL of Truck
Boom Extension	Hydraulic 32" (81.3 cm)
Maximum Horizontal Reach	14'(4.27 m)-from CL of Crane 17'(5.18 m)-from CL of Truck
Maximum Vertical Lift (From truck frame)	20'(6.10 m)
Inner Lift Cylinder	6"(15.24 cm) bore with integral pilot operated counterbalance valves.
Outer Lift Cylinder	5"(12.70 cm) bore with integral pilot operated counterbalance valves.
Extension Cylinder	3"(7.62 cm) bore with integral pilot operated counterbalance valves.
Rotation	290 degree power (worm gear drive)
Lifting Capacities (From CL of Truck)	10,000 lbs @ 9'(4535 kg @ 2.74 m) 7,500 lbs @ 11'(3400 kg @ 3.35 m) 5,450 lbs @ 14'(2470 kg @ 4.27 m) 4,250 lbs @ 17'(1930 kg @ 5.18 m)
Power Supply Required	PTO & Pump (6 gpm @ 2850 psi) (22.7 lpm @ 197 bars)
Controls	Proportional Radio Controls standard for all functions.
Stowed Height (Above truck frame)	75 inches (190.5 cm)
Mounting Space required	32 inches (81.3 cm)
Approximate Shipping Weight	3150 pounds (1430 kg)

CAPACITY CHART

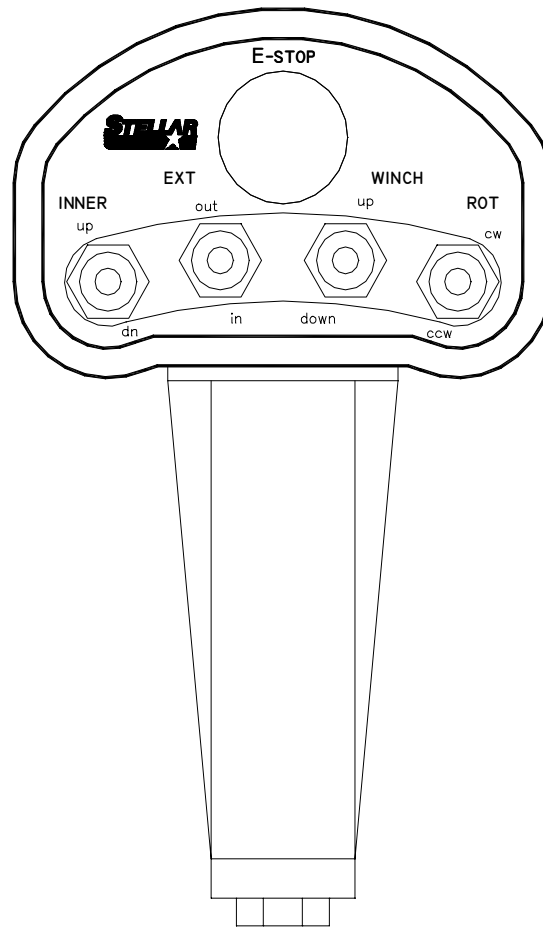
CAPACITY CHART



STELLAR 6000

5165

CRANE OPERATION



This crane is operated by a radio control system which operates an electronic valve bank. The controller (as shown) operates the following functions:

- main boom up and down
- extension boom in and out
- winch up and down
- rotation cw and ccw

To operate crane, activate the desired toggle switch. The crane will not function until the trigger on the remote handle is activated. The crane speed will change as the trigger is pulled or released.

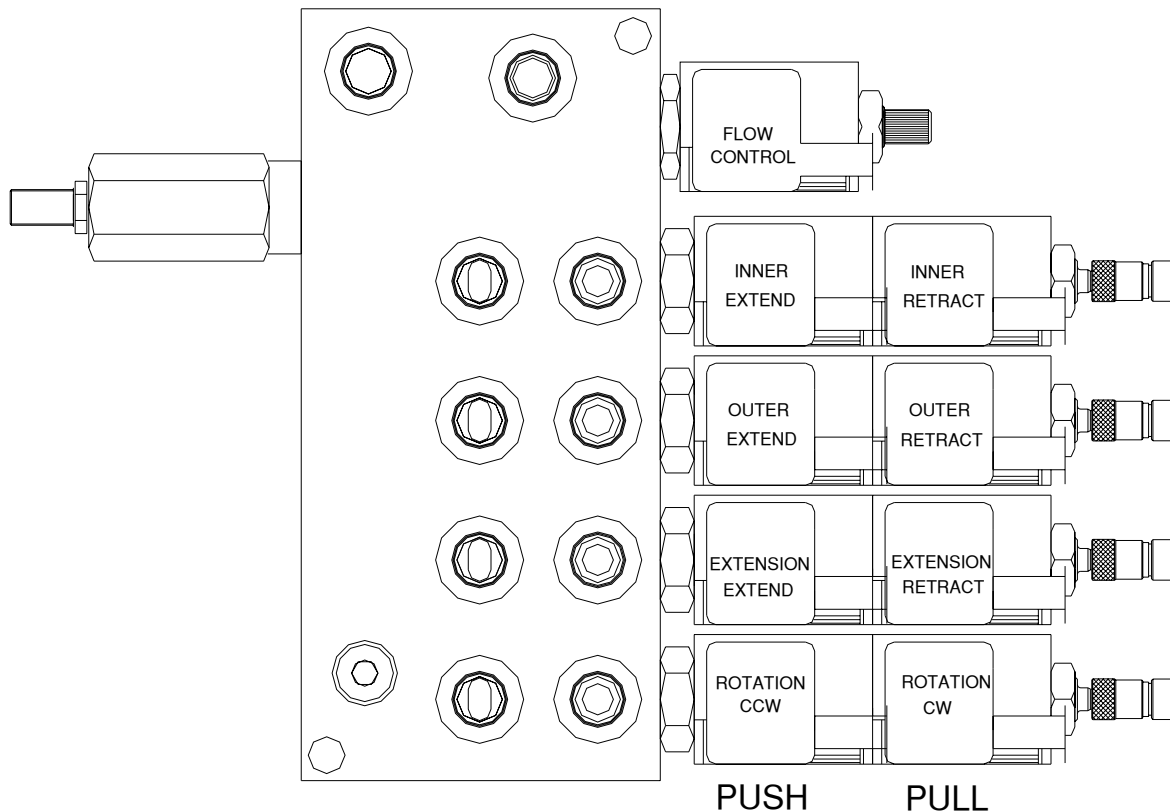
NOTE: If the crane does not operate, check the batteries located in the remote handle and replace if necessary.

MANUAL OPERATION

IN CASE OF RADIO FAILURE THE CRANE CAN BE OPERATED USING MANUAL OVERRIDES LOCATED ON THE VALVE BANK.

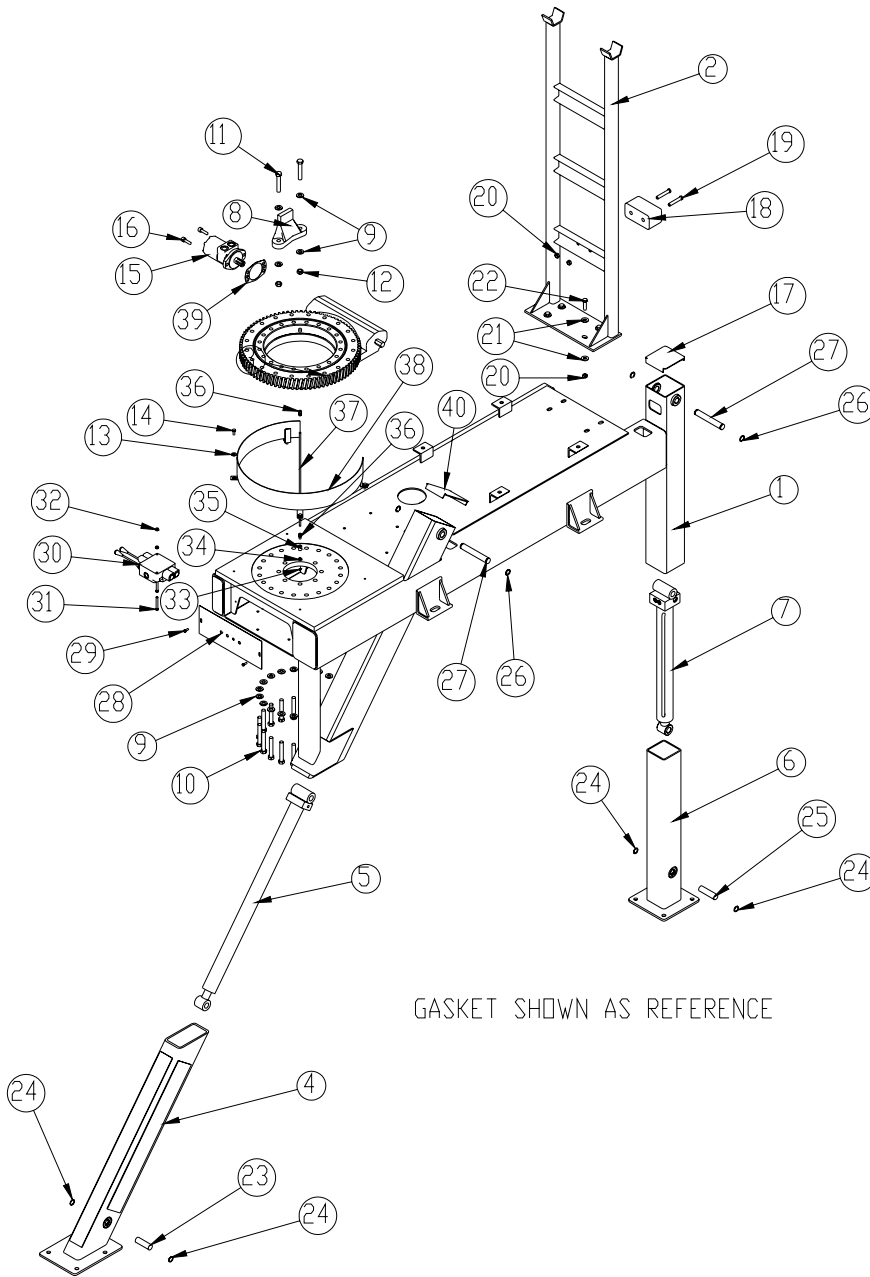
VALVE MANUAL OVERRIDE OPERATION

1. **ACTIVATE FLOW CONTROL**
TURN OVERRIDE SCREW ON FLOW CONTROL OUT.
2. **OPERATE SOLENOIDS**
UNLATCH THEN PUSH OR PULL TO OPERATE.
3. **DEACTIVATE FLOW CONTROL**
TURN OVERRIDE SCREW ON FLOW CONTROL IN.
4. **HAVE UNIT SERVICED**



BASE ASSEMBLY

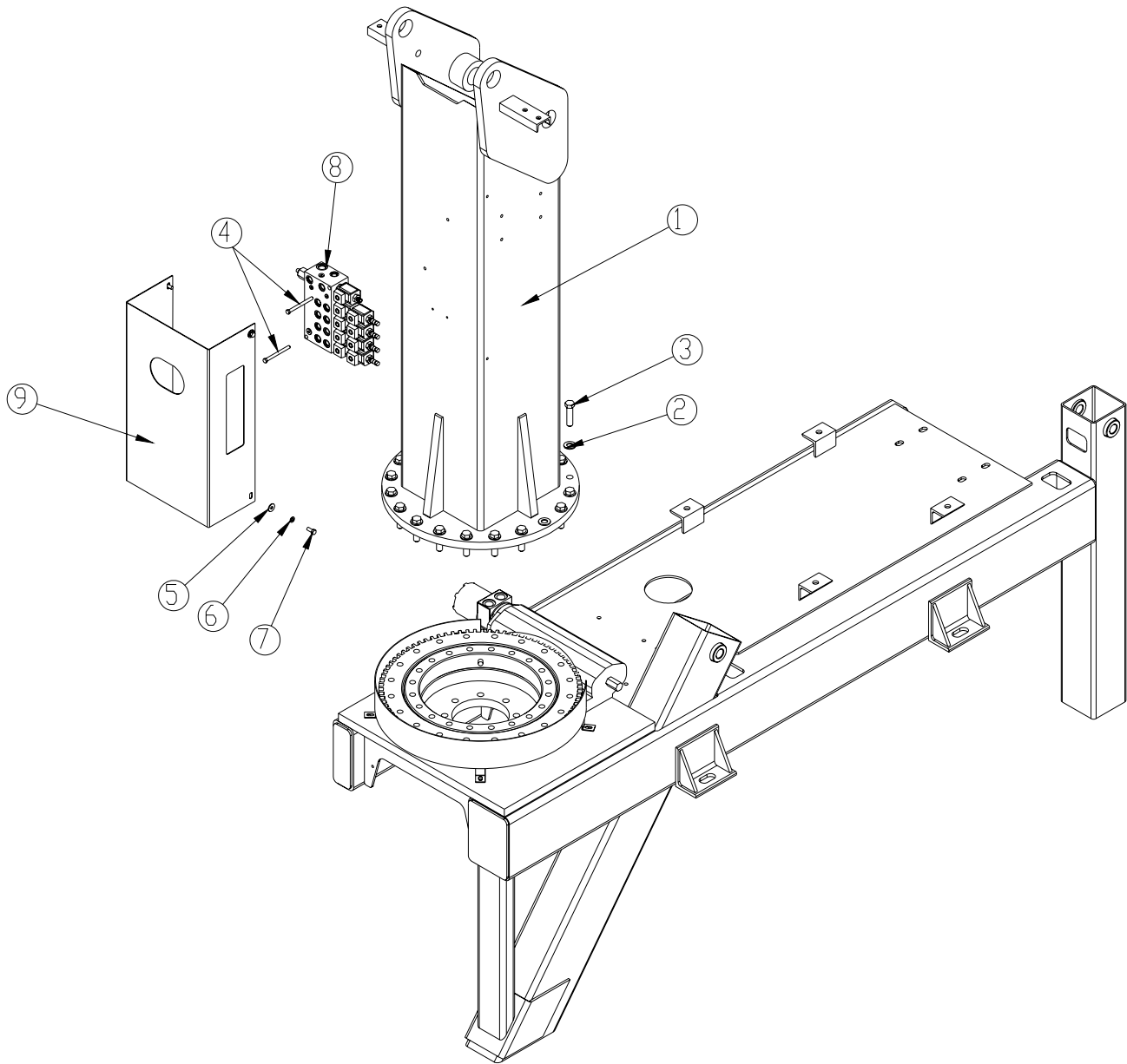
P/N 22140



GASKET SHOWN AS REFERENCE

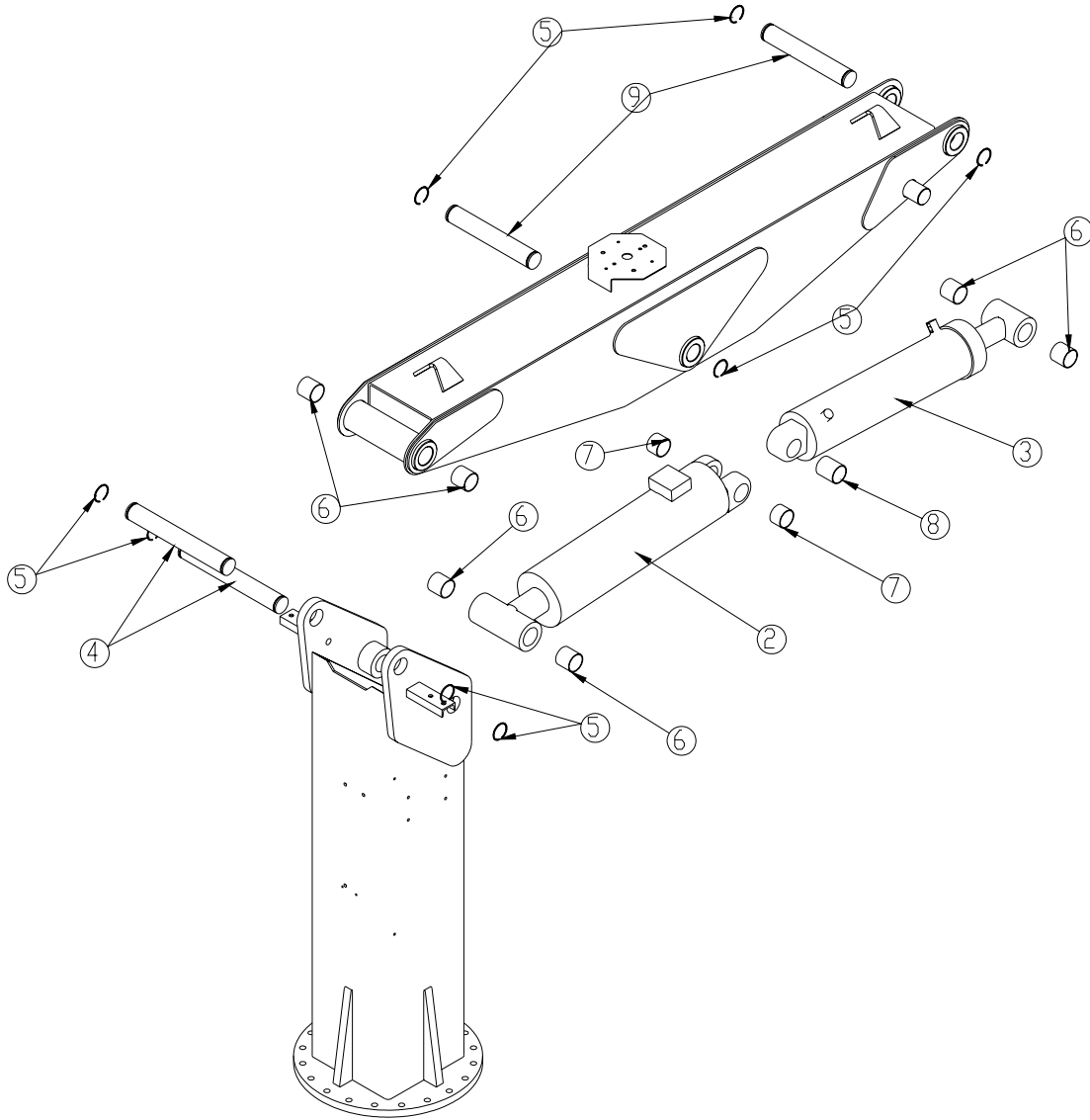
ITEM	PART	DESCRIPTION	QTY.	ITEM	PART	DESCRIPTION	QTY.
1	4789	BASE 6000 CRANE	1	21	0352	WASHER 0.50 USS FLAT ZINC	8
2	4792	SADDLE 6000	1	22	0500	CAP SCR 0.50-13X1.75 HHGR5	4
3	4032	BEARING SWING DRIVE S-HG-80-101-B-X	1	23	4912	PIN 1.00X3.25	1
4	4817	OUTRIGGER LEG SS 6000	1	24	3875	SNAP RING 1.00 INTERNAL	4
5	D0773	CYLINDER 2.00X25.50	1	25	D0977	PIN 1.00X3.75	1
6	4816	OUTRIGGER LEG CS 6000	1	26	0110	SNAP RING 1.00 ID 7200-100	4
7	3783	CYLINDER 2.00X18.75	1	27	3796	PIN 1.00X6.50	2
8	4074	STOP ROTATION 3200	1	28	4876	PLATE SWITCH MTG 6000	1
9	C5902	WASHER 0.63 SAE FLAT YELLOW GR8	24	29	0479	CAP SCR 0.25-20X0.75 HHGR5	2
10	D1313	CAP SCR 0.63-11X4.00 HHGR8 ZY	20	30	10974	VB 2 SECT W/PB VDM6-4-4-YE-HP	1
11	D1312	CAP SCR 0.63-11X3.50 HHGR8	2	31	0489	CAP SCR 0.31-18X2.50 HHGR5	2
12	2826	NUT 0.63-11 HH NYLOC	2	32	0342	NUT 0.31-18 HH NYLOC	2
13	0343	WASHER 0.31 USS FLAT ZINC	4	33	C4808	CAP PLASTIC (RED)	1
14	0420	CAP SCR 0.31-18X0.75 HHGR5	4	34	c1592	ZERK 1/8 NPT STRAIGHT	1
15	11458	MOTOR HYD ROSS MG100611AAAB	1	35	C2256	FTG COUPLER PIPE 0.13	1
16	D1295	CAP SCR 0.50-13X1.50 SH GR5	2	36	D1345	FTG CPRSN 0.12NPT/0.25 TUBE	2
17	19248	OUTRIGGER CAP ASM	1	37	D1810	TBE AIR SAEJ844 TYPE A .25	1
18	3945	BUMPER DOCK 3X3.38X6	1	38	26766	GUARD TTB 6000 GP BEARING	1
19	0504	CAP SCR 0.50-13X3.00 HHGR5	2	39	21151	GASKET MOTOR 008-10056-1	1
20	C6106	NUT 0.50-13 HHGR5 NYLOC	6	40	30490	CAP ASM OUTRIGGER SLANT	1

MAST ASSEMBLY P/N 22141



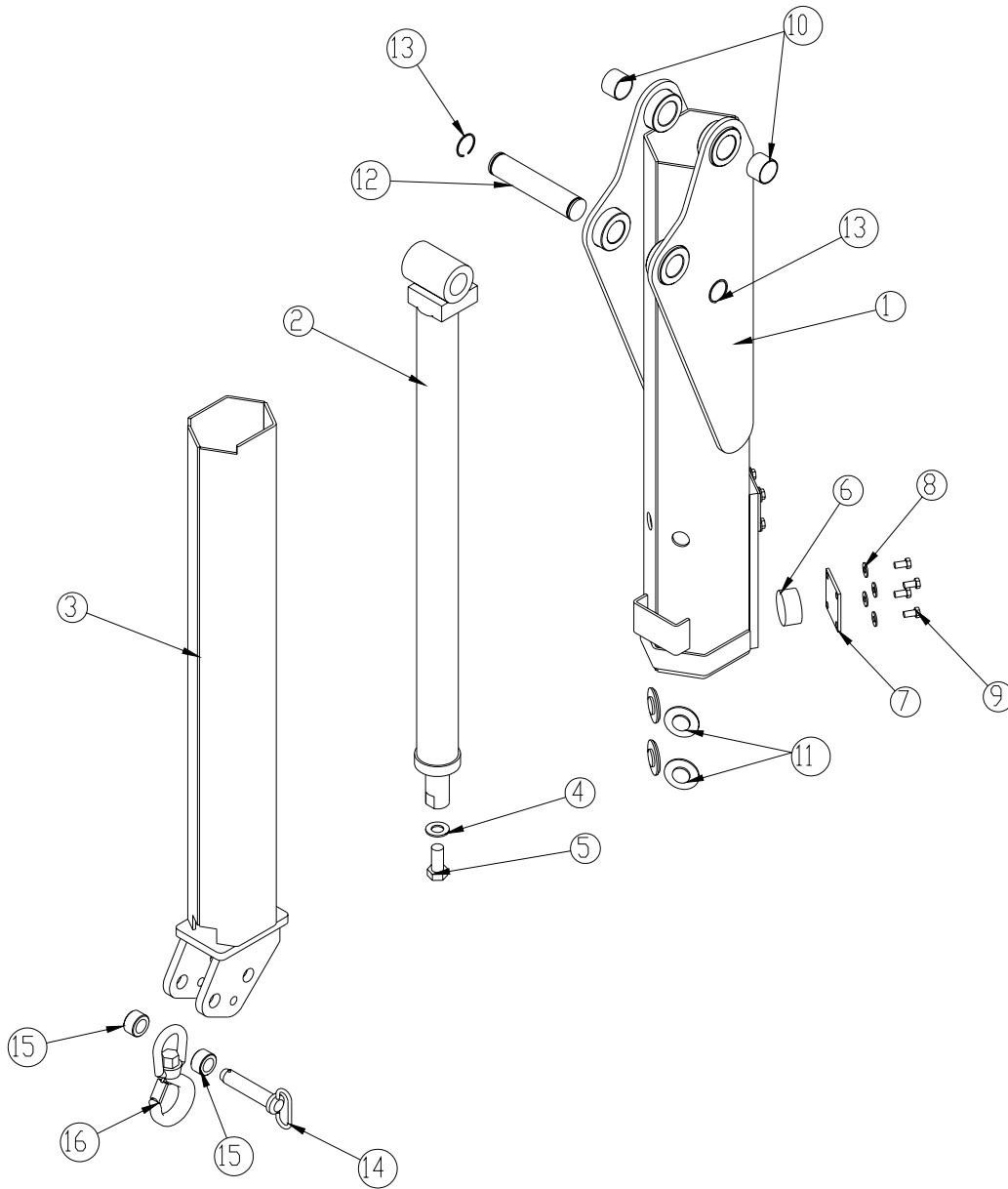
ITEM	PART	DESCRIPTION	QTY.	ITEM	PART	DESCRIPTION	QTY.
1	4486	MAST 6000 SERIES CRANE	1	6	0522	WASHER 0.31 LOCK	4
2	C5902	WASHER 0.63 FLAT GR8	20	7	0420	CAP SCR 0.31-18X0.75 HHGR5	4
3	C1026	CAP SCR 0.63-11X2.50 HHGR8 ZY	20	8	24685	VB 4 SECT ELECT W/PROP STERLING8GPM	1
4	0490	CAP SCR 0.31-18X3.50 HHGR5	2	9	26765	GUARD VB 6000 RADIO STERLING VB	1
5	0343	WASHER 0.31 USS FLAT ZINC	4				

MAIN BOOM ASSEMBLY P/N 22142



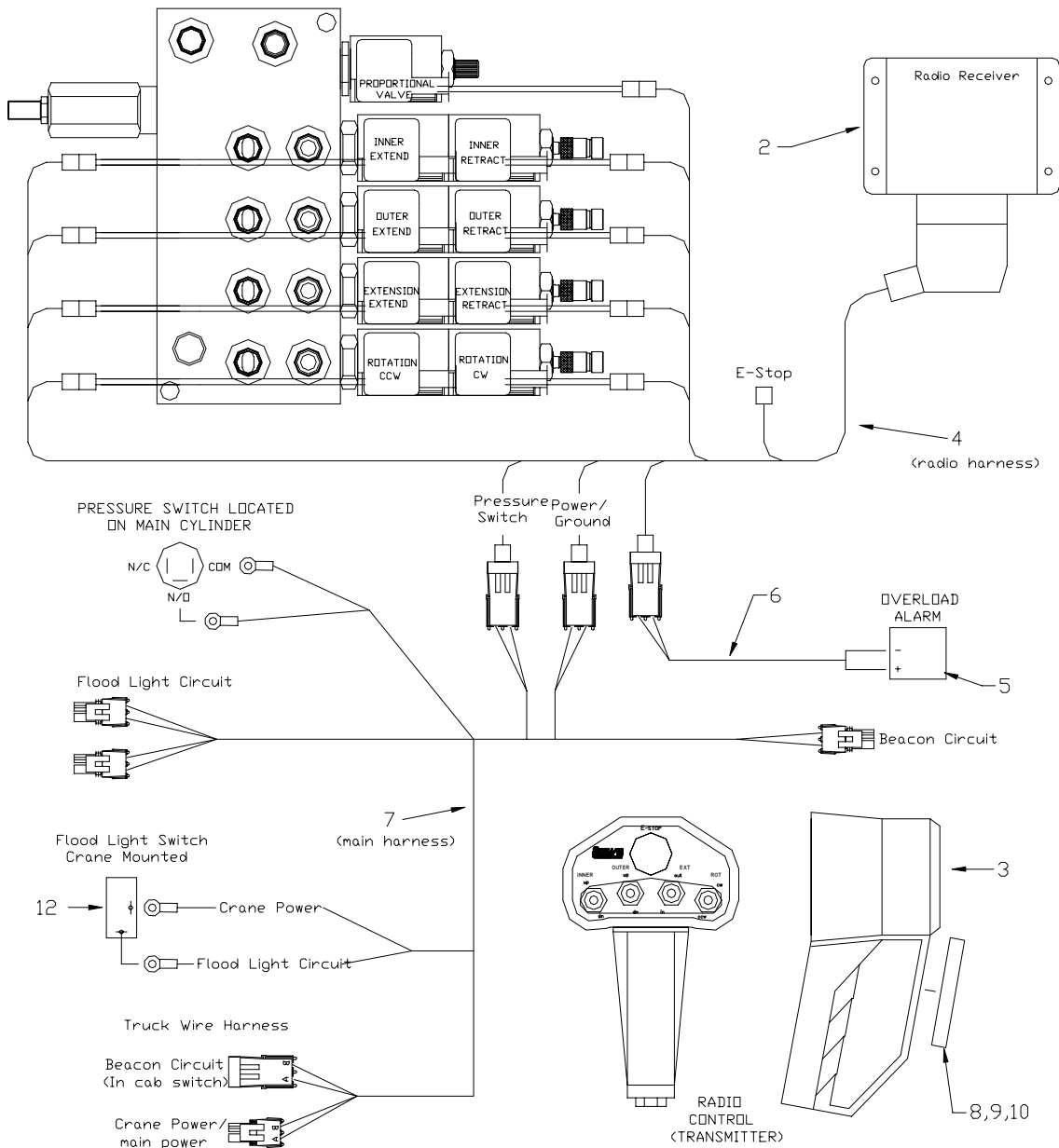
ITEM	PART	DESCRIPTION	QTY.	ITEM	PART	DESCRIPTION	QTY.
1	4626	INNER BOOM 6000 SERIES CRANE	1	6	4381	BUSHING 32DXR32 2.00X2.00 GARLOCK	6
2	4656	CYLINDER 60 SERIES INNER	1	7	4380	BUSHING 32DXR32 2.00X2.00 GARLOCK	2
3	4657	CYLINDER 60 SERIES OUTER	1	8	4379	BUSHING 32DXR40 2.00X2.50 GARLOCK	1
4	2451	PIN 2.00X15.00	2	9	4797	PIN 2.00X12.75	2
5	0108	SNAP RING 2.00 7200-200	8				

EXTENSION BOOM ASSEMBLY P/N 22143



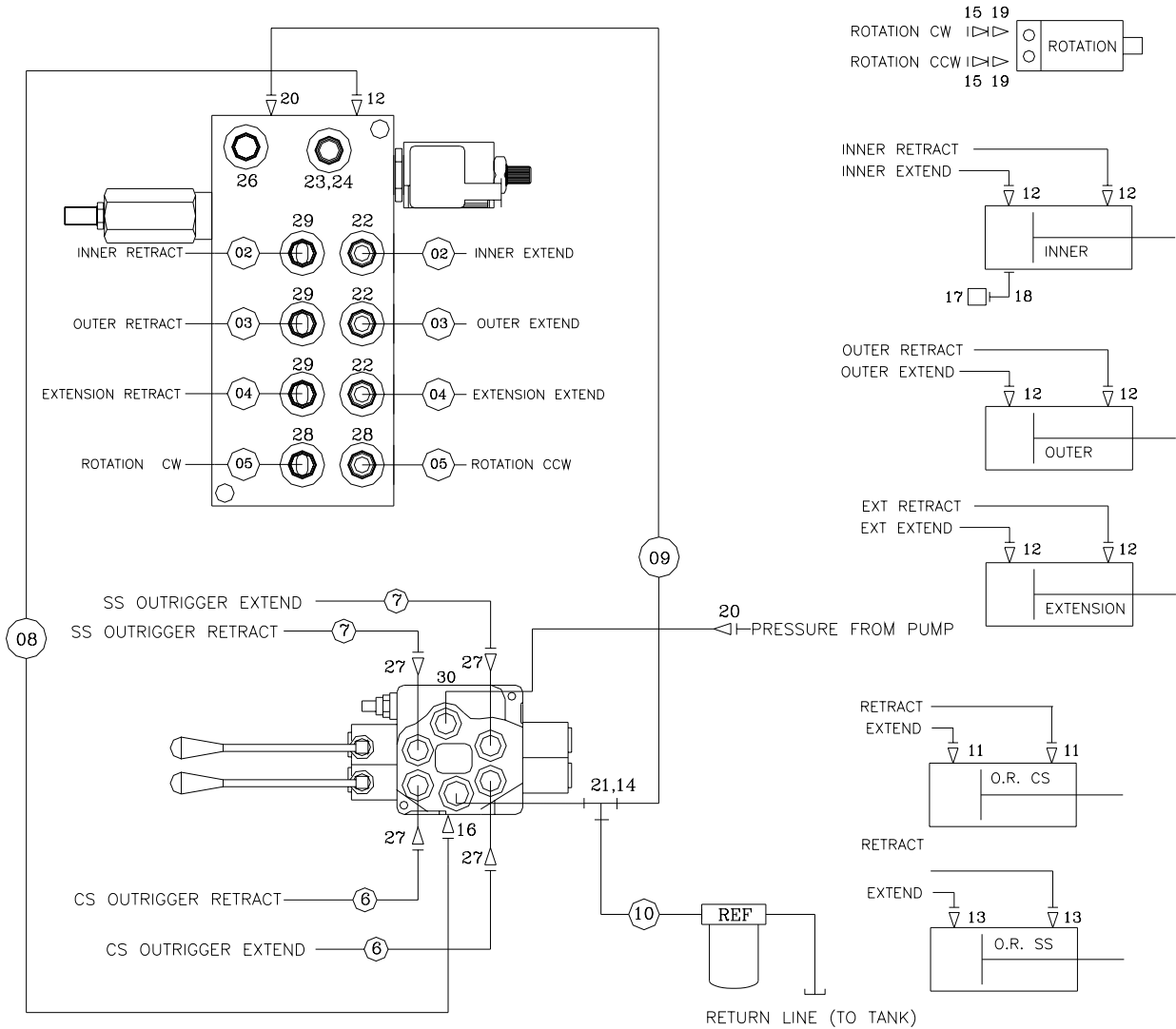
ITEM	PART	DESCRIPTION	QTY.	ITEM	PART	DESCRIPTION	QTY.
1	4607	OUTER BOOM 6000 SERIES CRANE	1	9	10172	CAP SCR 0.50-13X1.00 HHGR8 ZY	16
2	4658	CYLINDER EXT 60 SERIES	1	10	4380	BUSHING 32DXR32 2.00X2.00 GARLOCK	2
3	4528	EXT BOOM 6000 SERIES CRANE	1	11	9364	WEAR PAD 0.34X3.00 RND NYLATRON	4
4	6538	WASHER 1.00 SAE FLAT YELLOW GR8	1	12	4910	PIN 2.00X10.50	1
5	5191	CAP SCR 1.00-8X2.25 HHGR5	1	13	0108	SNAP RING 2.00 7200-200	2
6	9435	WEAR PAD 1.44X3.00 RND NYLATRON	4	14	5192	PIN HITCH 1.25X5.13	1
7	9434	PLATE WEAR PAD COVER 6000	4	15	5440	COLLAR 2.00X1.13	2
8	0352	WASHER 0.50 USS FLAT ZINC	16	16	3863	HOOK 5 TON	1

CONTROL KIT P/N 12133



12	C4815	SWITCH TOGGLE ON/OFF	1
11	16255	BATTERY CHARGER W/BTRY 110-3.6V	1
10	C4956	NUT #10-24 HH NYLOC SS	1
09	D1711	CAP SCR #10-24X0.50 BTNHD SS	1
08	6629	MAGNET	1
07	19076	WIRE HARNESS - CRANE	1
06	12981	WIRE HARNESS OVERLOAD ALARM	1
05	D0045	OVERLOAD ALARM	1
04	12135	WIRE HARNESS - RADIO	1
03	11833	TRANSMITTER (PART OF 1)	1
02	11847	RECEIVER (PART OF 1)	1
01	11832	RADIO SYSTEM 4 FUNCTION	1
ITEM	PART No.	DESCRIPTION	QTY

HYDRAULIC KIT P/N 13040

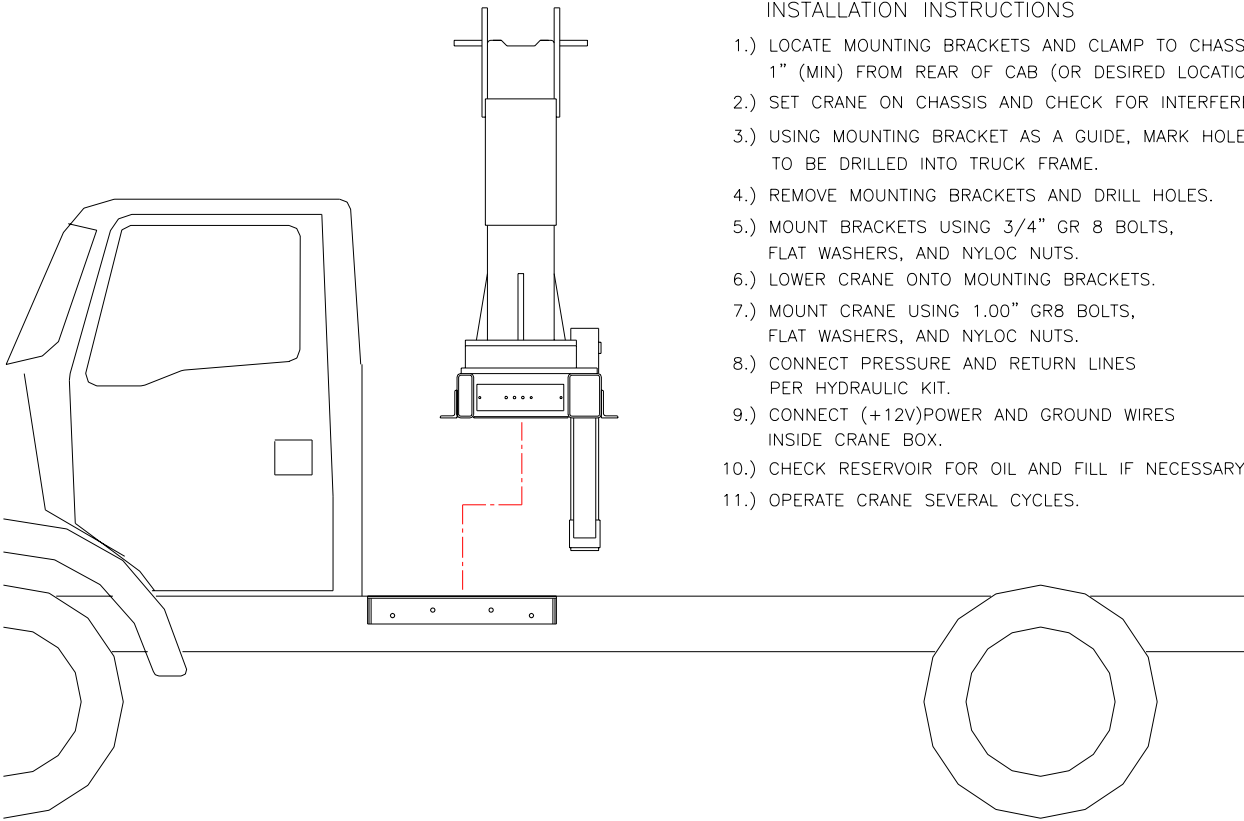


15	C4922	FTG ADAPT 4-6 F50LO-S	2	30	D1535	PLUG HOLLOW HEX	1
14	7350	FTG ST RUN TEE 8R5OLO	1	29	25361	FTG MF/MSTR LONG 90 6-CC50LO-S	3
13	D1291	FTG ADAPT 4-F50LO-S	2	28	3338	FTG MF/MSTR 90 4-6 C50LO-S	2
12	0279	FTG ADAPT 6-F50LO-S	7	27	12160	FTG ADAPT 4-8 F50LO	4
11	C5572	FTG ORFS/OBR 45 DEG ILL 4-V50LO	2	26	C4961	PLUG STR HOLLOW HEX 0.38 6-HP50N	1
10	13289	HOSE-HYD .50 X 76	1ref	25			
09	13023	HOSE-HYD .50 X 120	1ref	24	6397	PRESSURE GAUGE	1
08	13024	HOSE-HYD .38 X 110	1ref	23	D1430	FTG ADAPT O-RING FMP 6-1/4 F50G-S	1
07	13022	HOSE-HYD .25 X 73	2ref	22	C0338	FTG MF/MSTR 90 6-C50LO-S	3
06	7767	HOSE-HYD .25 X 93	2ref	21	14441	FTG ADAPT MSTR/FSTR 10-8 F50G5	1
05	5359	HOSE-HYD .25 X 180	2ref	20	1554	FTG ADAPT 8-F50LO-S	2
04	26768	HOSE-HYD .38 X 120	2ref	19	C1111	FTG ADAPT MSTR/FSTR 10-6 F50G5	2
03	12999	HOSE-HYD .38 X 72	2ref	18	3861	FTG ML FM O-RING 90 DEG	1
02	12998	HOSE-HYD .38 X 54	2ref	17	3862	SWITCH PRESSURE OVERLOAD	1
01	13321	HOSE KIT,6000 CRANE (incl:2-10)	1	16	C1854	FTG ADAPT 6-8 F50LO-S	1
ITEM	PART No.	DESCRIPTION	QTY	ITEM	PART No.	DESCRIPTION	QTY

INSTALLATION KIT P/N 5195

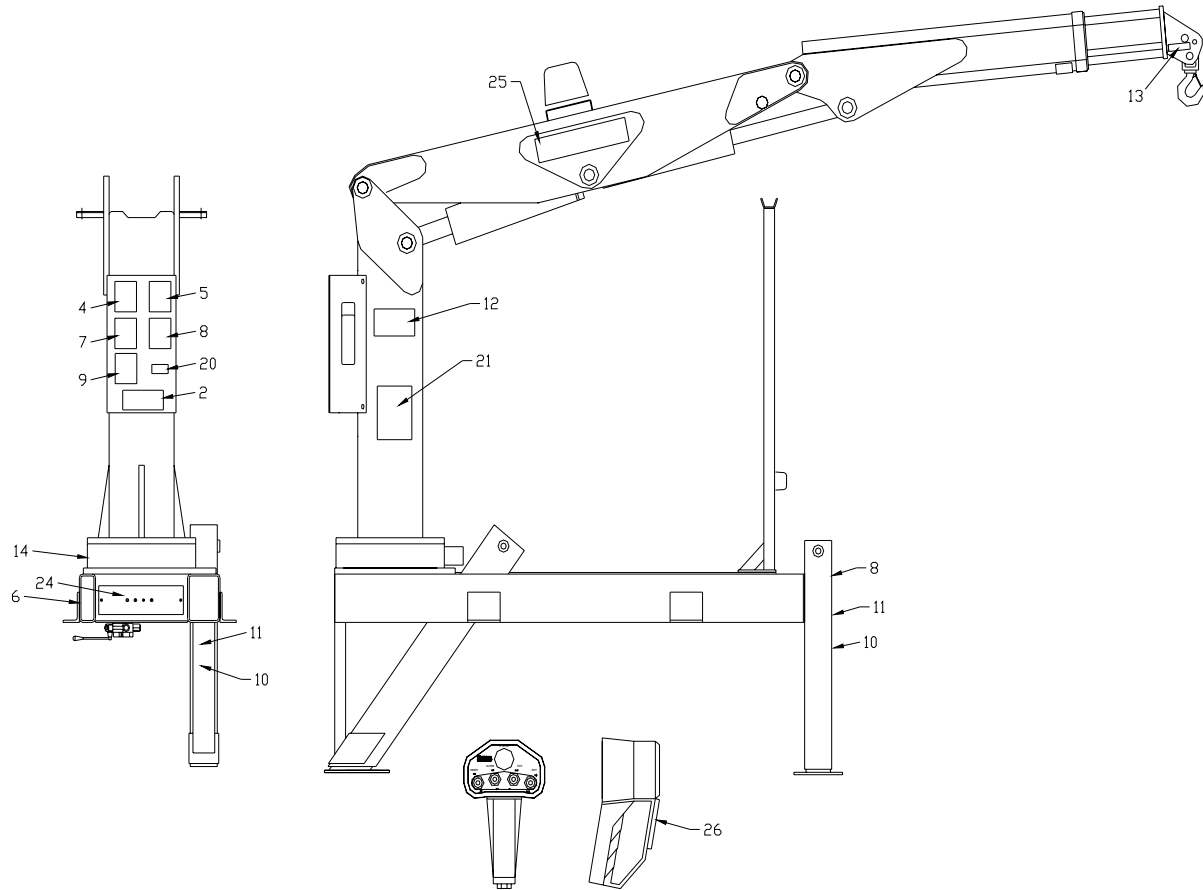
INSTALLATION INSTRUCTIONS

- 1.) LOCATE MOUNTING BRACKETS AND CLAMP TO CHASSIS 1" (MIN) FROM REAR OF CAB (OR DESIRED LOCATION).
- 2.) SET CRANE ON CHASSIS AND CHECK FOR INTERFERENCES.
- 3.) USING MOUNTING BRACKET AS A GUIDE, MARK HOLES TO BE DRILLED INTO TRUCK FRAME.
- 4.) REMOVE MOUNTING BRACKETS AND DRILL HOLES.
- 5.) MOUNT BRACKETS USING 3/4" GR 8 BOLTS, FLAT WASHERS, AND NYLOC NUTS.
- 6.) LOWER CRANE ONTO MOUNTING BRACKETS.
- 7.) MOUNT CRANE USING 1.00" GR8 BOLTS, FLAT WASHERS, AND NYLOC NUTS.
- 8.) CONNECT PRESSURE AND RETURN LINES PER HYDRAULIC KIT.
- 9.) CONNECT (+12V)POWER AND GROUND WIRES INSIDE CRANE BOX.
- 10.) CHECK RESERVOIR FOR OIL AND FILL IF NECESSARY
- 11.) OPERATE CRANE SEVERAL CYCLES.



07	6294	NUT, 1.00-8 NYLOC	4
06	6538	WASHER, 1.00 FLAT SAE	8
05	5199	CAP SCR, 1.00-8 X 3.00 HHGR8	4
04	C0538	NUT, 0.75-10 NYLOC	8
03	C6219	WASHER, FLAT .75 SAE	16
02	C1028	CAP SCR, 0.75-10 X 3.00 HHGR8	8
01	5138	TIE DOWN, 6000 CRANE	2
ITEM	PART No.	DESCRIPTION	QTY

DECAL KIT P/N 5163



26	6832	DECAL-MAGNET COVER	1
25	5164	DECAL-IDENTIFICATION	2
24	4158	DECAL-DR PANEL	1
23	.	.	.
22	.	.	.
21	5165	DECAL-CAPACITY	2
20	4214	DECAL-SERVICE	1
19	4305	DECAL-FLOOD LIGHT	1
18	C0568	DECAL-DIESEL FUEL ONLY	2
17	C5911	DECAL-STELLAR 2x4.5	3
16	C5910	DECAL-STELLAR 4x9.5	1
15	.	.	.
14	9188	DECAL WORM GEAR LUBRICATION	1
13	16973	DECAL-STELLAR APPROVED ATTACHMT	2
12	C1179	DECAL-ELECTROCUTION 4.5x7.5	2
11	C5918	DECAL-DANGER MOVING D.R.	2
10	C4795	DECAL-DANGER D.R.	2
09	4190	DECAL-DANGER	1
08	C4541	DECAL-DANGER STOWING	2
07	4189	DECAL-DANGER	1
06	13036	DECAL-CRANE OUTRIGGER	1
05	C4544	DECAL-DANGER	1
04	C4540	DECAL-DANGER	1
03	C4545	DECAL-ELECTROCUTION 5x13	4
02	4187	DECAL-ELECTROCUTION 3.25x7.5	1
01	4188	DECAL-ALIGNMENT	1
ITEM	PART No.	DESCRIPTION	QTY

THESE DECALS NOT SHOWN
(USE WITH BODY PACKAGE)

Limited Warranty Statement

for Stellar Tire Service Trucks, Truck-mounted Cranes, Truck-mounted Stellarc Welders & Truck-mounted Compressed Air Systems ONLY

Stellar Industries, Inc. (Stellar) warrants products designed and manufactured by Stellar to be free from defects in material and workmanship under proper use and maintenance. Products must be installed and operated in accordance with Stellar's written instructions and stated lifting capacities. The warranty period shall be Twelve (12) month warranty on all Stellar designed and fabricated parts, and Ninety (90) days repair labor.

The warranty period shall begin from the date recorded by Stellar as the in-service date. This date will be derived from the completed warranty registration card. In the event a warranty registration card is not received by Stellar, the factory ship date will be used. Stellar's obligation under this warranty is limited to, and the sole remedy for any such defect shall be, the repair and/or replacement (at Stellar's option) of the part and/or component in question. Stellar after-sales service personnel must be notified by telephone, fax, e-mail, or mail of any warranty-applicable damage within fourteen (14) days of its occurrence. If at all possible, Stellar will ship the replacement part within 24-hours of notification by the most economical, yet expedient, means possible. Expedited freight delivery will be at the expense of the owner.

Warranty claims must be submitted and shall be processed in accordance with Stellar's established warranty claim procedure. Stellar Service personnel must be contacted prior to any warranty claim. A return materials authorization (RMA) account number must be issued to the claiming party prior to the return of any warranty parts. Parts returned without prior authorization will not be recognized for warranty consideration. All damaged parts must be returned to Stellar freight prepaid; freight collect returns will be refused.

Warranty service will be performed by any Stellar new equipment distributor, or by any Stellar-recognized service center authorized to service the type of product involved, or at the Stellar factory. At the time of requesting warranty service, the owner must present evidence of date of delivery of the product. The owner shall be obligated to pay for any overtime labor requested of the servicing company by the owner, any field service call charges, and any towing and/or transportation charges associated with moving the equipment to the designated repair/service provider.

All obligations of Stellar and its authorized dealers and service providers shall be voided if someone other than an authorized Stellar dealer provides other than routine maintenance service without prior written approval from Stellar. In the case repair work is performed on the Stellar-manufactured product, original Stellar parts must be used to keep the warranty in force. The warranty may also be voided if the product is modified or altered in any way not approved, in writing, by Stellar engineering.

The owner/operator is responsible for furnishing proof of the date of original purchase of the Stellar product in question. Warranty registration is the ultimate responsibility of the owner and may be accomplished by the completion and return of the Stellar product registration card provided with the product. If the owner is unsure of registration, he is encouraged to contact Stellar at the address below to confirm registration of the product in question. This warranty covers only defective material and workmanship. It does not cover depreciation or damage caused by normal wear and tear, accident, mishap, untrained operators, or improper or unintended use. The owner has the obligation of performing routine care and maintenance duties as stated in Stellar's written instructions, recommendations, and specifications. Any damage resulting from owner/operator failure to perform such duties shall void the coverage of this warranty. The cost of labor and supplies associated with routine maintenance will be paid by the owner.

The only remedies the owner has in connection with the breach or performance of any warranty on the Stellar product specified are those set above. In no event will Stellar, the Stellar distributor/dealer, or any company affiliated with Stellar be liable for business interruptions, costs of delay, or for any special, indirect, incidental, or consequential costs or damages. Such costs may include, but are not limited to, loss of time, loss of revenue, loss of use, wages, salaries, commissions, lodging, meals, towing, hydraulic fluid, or any other incidental cost.

All products purchased by Stellar from outside vendors shall be covered by the warranty offered by that respective manufacturer only. Stellar does not participate in, or obligate itself to, any such warranty.

Hydraulic cylinders used in Stellar products are subject to the same warranty provisions stated above. Should a cylinder defect develop within the above stated warranty period, notify Stellar immediately. Stellar will ship, freight prepaid, by the most effective, expedient, means a new or re-manufactured cylinder of the same size and type. An authorization for return of the original part will be issued at the time the order is placed. The defective cylinder is to be returned to Stellar freight prepaid by the owner. Cylinders returned freight collect will be refused. Should the defective cylinder not be returned within 30 days of shipping the replacement cylinder, the owner is responsible to pay Stellar the full purchase price of the replacement part.

Stellar reserves the right to make changes in design or improvement upon its products without imposing upon itself the same upon its products theretofore manufactured.

This warranty will apply to all Stellar Tire Service Trucks, Truck-mounted Cranes, Truck-mounted Stellarc Welders & Truck-mounted Compressed Air Systems shipped from Stellar's factory after January 1, 1997. The warranty is for the use of the original owner only and is not transferable without prior written permission from Stellar.

THIS WARRANTY IS EXPRESSLY IN LIEU OF ANY OTHER WARRANTIES, EXPRESS OR IMPLIED, INCLUDING ANY WARRANTY OF MERCHANTABILITY OR FITNESS FOR A PARTICULAR PURPOSE. REMEDIES UNDER THIS WARRANTY ARE LIMITED TO THE PROVISION OF MATERIAL AND SERVICES, AS SPECIFIED HEREIN. STELLAR INDUSTRIES, INC. IS NOT RESPONSIBLE FOR INCIDENTAL OR CONSEQUENTIAL DAMAGES.

Stellar Industries, Inc. • 280 West Third Street • Garner, Iowa 50438 • U.S.A.

E-Mail • sales@stellar-industries.com

Telephone: 800/321-3741; 641/923-3741 • Fax: 641/923-2812; 641/923-2811

Revised 10/05/2000