



CRANE MODEL 6000

280 W. 3rd St., Box 169 • Garner, IA 50438 • Phone: 641-923-3741 • Fax: 641-923-2812

UPDATED 08/01/01

TABLE OF CONTENTS

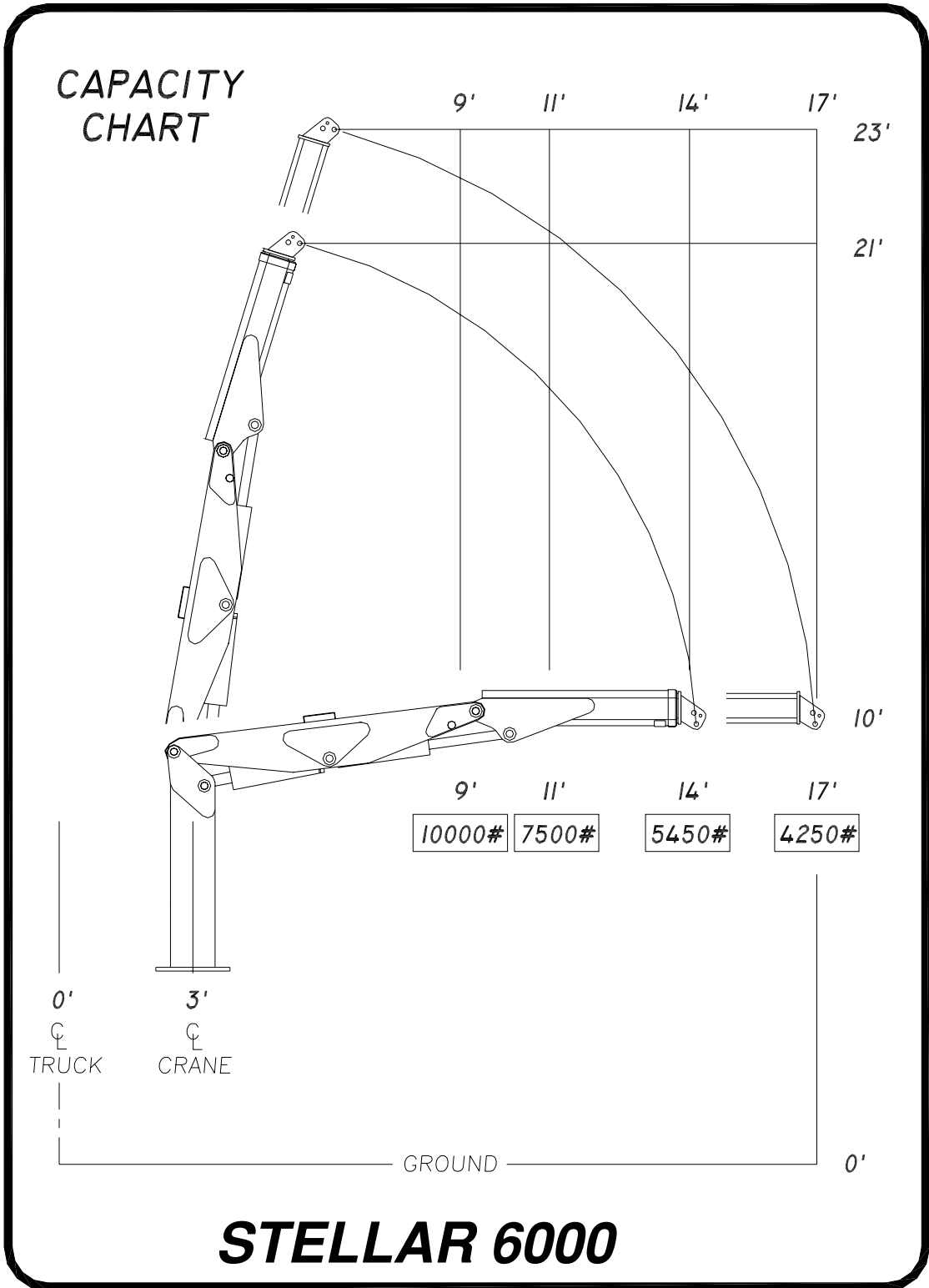
STELLAR CRANE 6000

PAGE	DESCRIPTION
3.)	SPECIFICATION SHEET
4.)	CAPACITY CHART
5.)	CRANE OPERATION
6.)	MANUAL OPERATION
7.)	CRANE PARTS DRAWING
8.)	CONTROL KIT
9.)	HYDRAULIC KIT
10.)	INSTALLATION KIT
11.)	DECAL KIT
12.)	WARRANTY

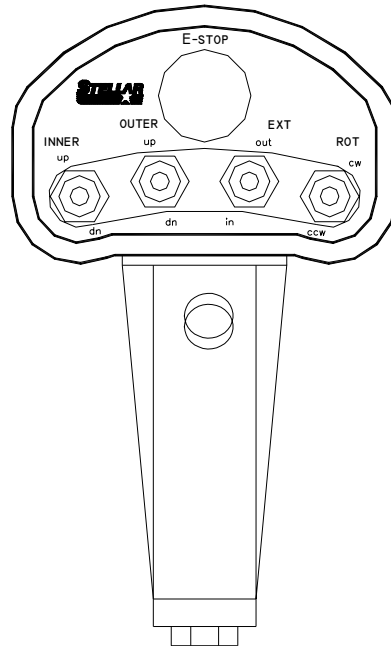
SPECIFICATION SHEET

Crane Rating	60,000 foot/pounds
Standard Boom Length	11 foot-from CL of Crane 14 foot-from CL of Truck
Boom Extension	Hydraulic 32 inches
Maximum Horizontal Reach	14 foot-from CL of Crane 17 foot-from CL of Truck
Maximum Vertical Lift (From truck frame)	20 foot
Inner Lift Cylinder	6 inch bore with integral pilot operated counterbalance valves.
Outer Lift Cylinder	5 inch bore with integral pilot operated counterbalance valves.
Extension Cylinder	3 inch bore with integral pilot operated counterbalance valves.
Rotation	290 degree power (Hourglass worm gear)
Lifting Capacities (From CL of Truck)	10,000 pounds @ 9 foot 7,500 pounds @ 11 foot 5,450 pounds @ 14 foot 4,250 pounds @ 17 foot
Power Supply Required	PTO & Pump (6 gpm @ 2850 psi)
Controls	Proportional Radio Controls standard for all functions.
Stowed Height (Above truck frame)	75 inches
Mounting Space required	32 inches
Approximate Shipping Weight	3150 pounds

CAPACITY CHART



CRANE OPERATION



CRANE OPERATION

THIS CRANE IS OPERATED BY A RADIO CONTROL SYSTEM WHICH OPERATES AN ELECTRONIC VALVE BANK. THE CONTROLLER (AS SHOWN) OPERATES THE FOLLOWING FUNCTIONS:

- INNER BOOM UP & DOWN
- OUTER BOOM UP & DOWN
- EXTENSION BOOM IN & OUT
- ROTATION CW & CCW

TO OPERATE THE CRANE ACTIVATE THE DESIRED TOGGLE SWITCH. THE CRANE WILL NOT FUNCTION UNTIL THE TRIGGER ON THE REMOTE HANDLE IS ACTIVATED. THE CRANE SPEED WILL CHANGE AS THE TRIGGER IS PULLED OR RELEASED.

NOTE: IF THE CRANE DOES NOT OPERATE CHECK THE BATTERIES LOCATED IN THE REMOTE HANDLE AND REPLACE IF NECESSARY.

MANUAL OPERATION

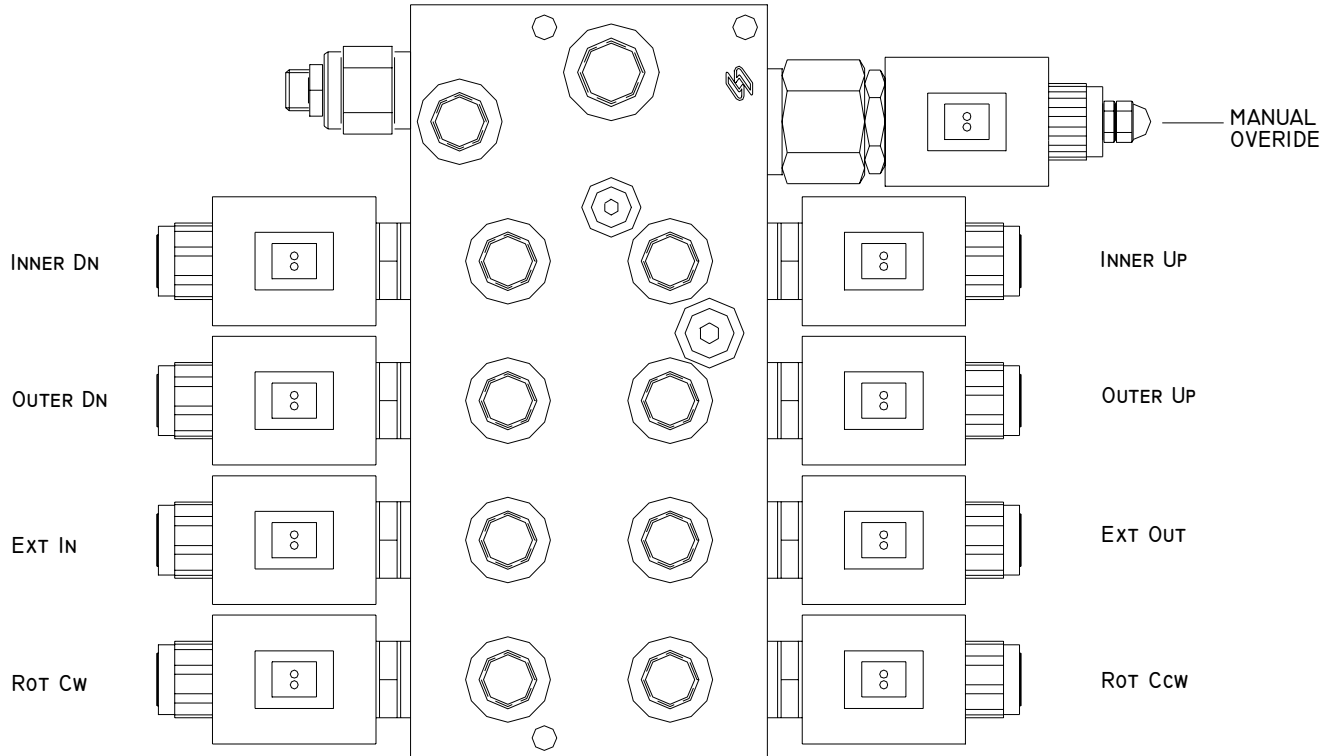
IN CASE OF RADIO FAILURE THE CRANE CAN BE OPERATED USING THE MANUAL OVERRIDES LOCATED ON THE VALVE BANK. USE THE MANUAL OVERRIDES **ONLY** TO GET THE CRANE INTO A STOWED POSITION FOR TRAVEL. HAVE THE EQUIPMENT SERVICED FOR NORMAL RADIO USE.

-WARNING-

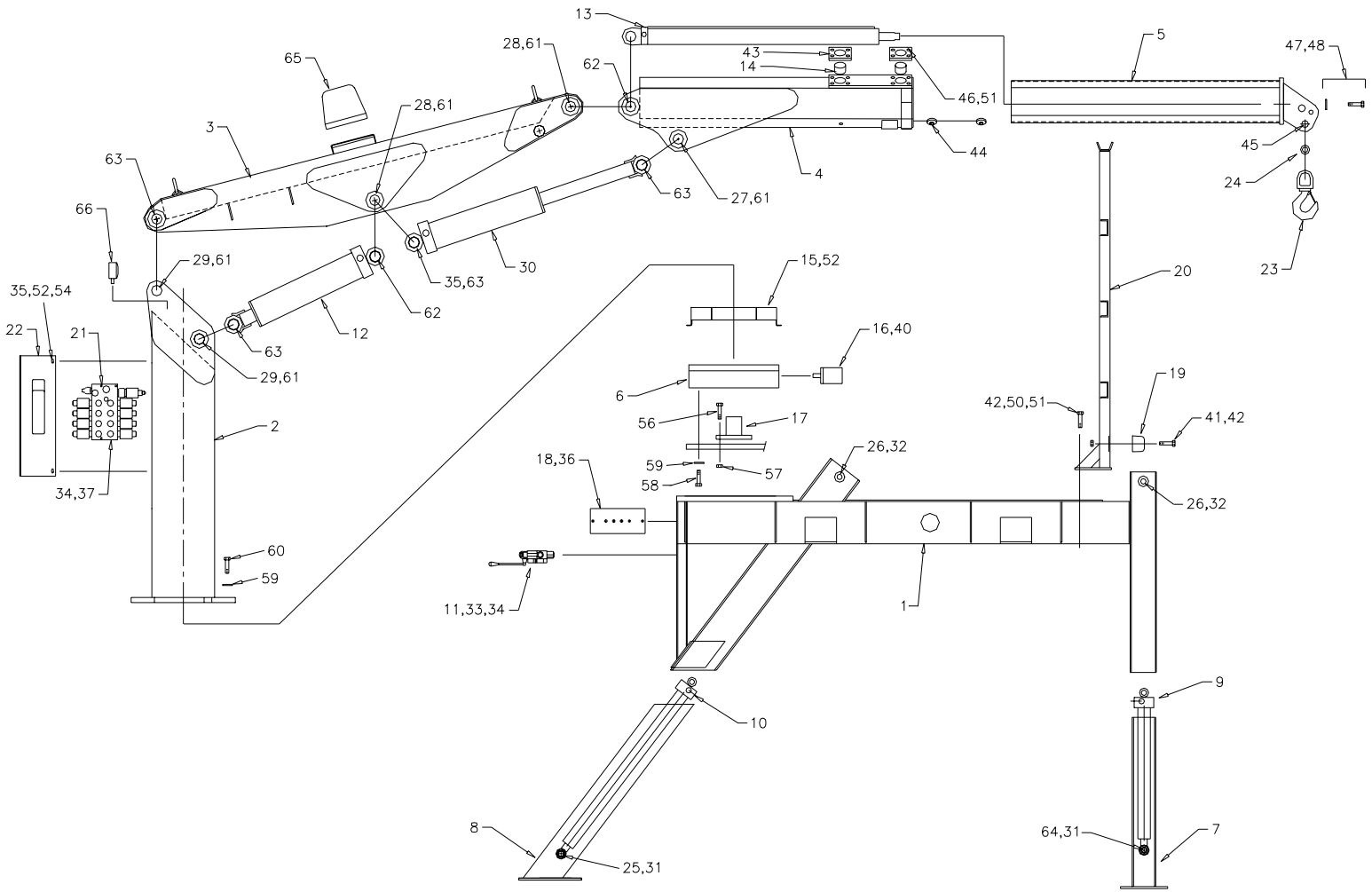
PROLONGED MANUAL OPERATION WILL CAUSE SEVERE DAMAGE TO THE HYDRAULIC SYSTEM.

TO OPERATE CRANE MANUALLY:

- 1.) LOOSEN JAM NUT ON FLOW CONTROL.
- 2.) TURN THE SET SCREW FULLY CLOCKWISE.
- 3.) OPERATE FUNCTIONS AS NEEDED TO STOW CRANE BY PUSHING ON THE END OF THE SOLENOID.
- 4.) RESTORE MANUAL OVERRIDE VALVE TO ORIGINAL POSITION.
- 5.) HAVE UNIT SERVICED.

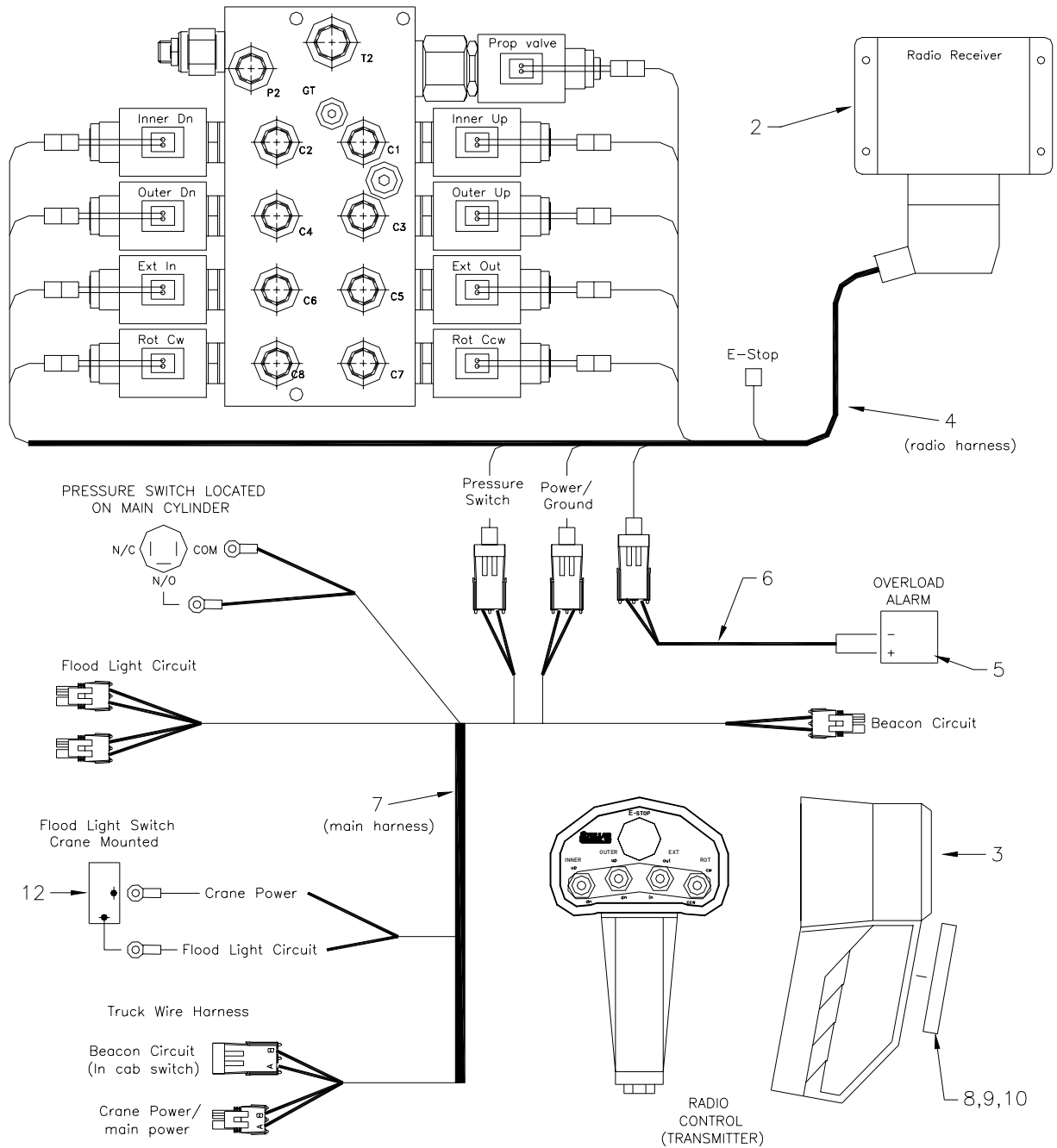


CRANE ASSEMBLY



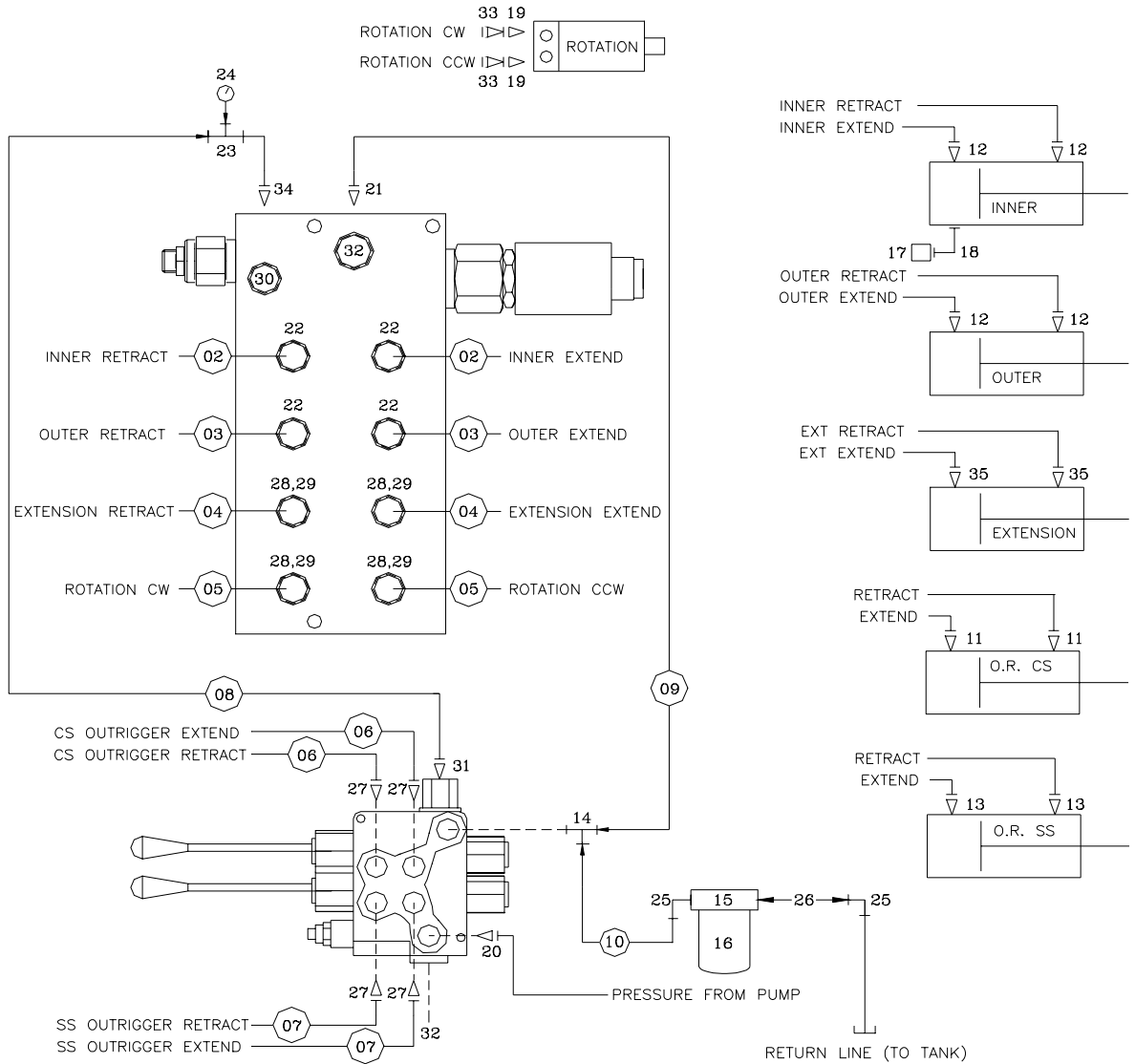
ITEM	PART No.	DESCRIPTION	QTY	ITEM	PART No.	DESCRIPTION	QTY	ITEM	PART No.	DESCRIPTION	QTY
01	4789	BASE, 6000 CRANE	1	23	3863	HOOK	1	45	5192	PIN, 1.25 X 7.00	1
02	4486	MAST, 6000 CRANE	1	24	5440	BUSHING	2	46	10172	CAP SCR .50 - 13 X 1.00 HHGR5	16
03	4626	INNER BOOM, 6000 CRANE	1	25	4912	PIN, 1.00 X 3.25	1	47	5191	CAP SCR, 1.00-8 X 2.25 HH GR5	1
04	4607	OUTER BOOM, 6000 CRANE	1	26	3796	PIN, 1.00 X 6.50	2	48	C1040	WASHER, 1.00 FLAT	1
05	4528	EXTENSION BOOM, 6000 CRANE	1	27	4910	PIN, 2.00 X 9.75	1	49	.	.	.
06	4032	BEARING, SWING DRIVE	1	28	4797	PIN, 2.00 X 12.75	2	50	0359	CAP SCR, .50-13 X 1.50 HH	4
07	4816	OUTRIGGER LEG, CS	1	29	2451	PIN, 2.00 X 15.00	2	51	0352	WASHER, .50 FLAT	10
08	4817	OUTRIGGER LEG, SS	1	30	4657	CYLINDER, OUTER	1	52	0420	CAP SCR, .31-18 X .75	8
09	3783	CYLINDER, OUTRIGGER CS	1	31	3875	RETAINING RING, 1.00 INT	4	53	.	.	.
10	D0773	CYLINDER, OUTRIGGER SS	1	32	0110	RETAINING RING, 1.00 EXT	4	54	0522	WASHER, .31 LOCK	4
11	10974	COMPARTMENT ASM, VALVE BANK 2 SECTION	1	33	0489	CAP SCR, .31-18 X 2.50 HH	2	55	.	.	.
12	4656	CYLINDER, INNER	1	34	0342	NUT, .31-18 NYLOC	5	56	D1312	CAP SCR,.62-11 X 3.50 HHGR8	2
13	4658	CYLINDER, EXTENSION	1	35	4379	BUSHING 32DXR40 2.00X2.50 GARLOCK	1	57	C1049	NUT, .62-11 NYLOC	2
14	9435	WEAR PAD	4	36	0479	CAP SCR 0.25-20X0.75 HHGR5	2	58	D1313	CAP SCR, .62-11 X 4.00 HHGR8	20
15	4874	GUARD, ROTATION DRIVE	1	37	0490	CAP SCR, .31-18 X 3.50 HH	3	59	C5902	WASHER, .62 GR8	40
16	11458	MOTOR, HYD	1	38	.	.	.	60	C1026	CAP SCR, .62-11 X 2.50 HHGR8	20
17	4074	ROTATION STOP	1	39	.	.	.	61	0108	RETAINING RING, 2.00 EXT	10
18	4876	SWITCH MTC PLATE	1	40	D1295	CAP SCR, .50-13 X 1.50 SH	2	62	4380	BUSHING, 32DXR24	4
19	3945	RUBBER BUMPER	1	41	C0996	CAP SCR, .50-13 X 3.00 HH	2	63	4381	BUSHING, 32DXR32	6
20	4792	SADDLE, 3200 CRANE	1	42	C6106	NUT, .50-13 NYLOC	7	64	D0977	PIN, 1.00 X 3.75	1
21	11761	VALVE BANK, 4 SECTION	1	43	9434	COVER - TOP WEAR PAD	4	65	C0877	BEACON LIGHT (OPTIONAL EQUIPMENT)	1
22	12297	VALVEBANK COVER	1	44	9364	WEAR PAD	4	66	2305	FLOOD LIGHT (OPTIONAL EQUIPMENT)	2

CONTROL KIT



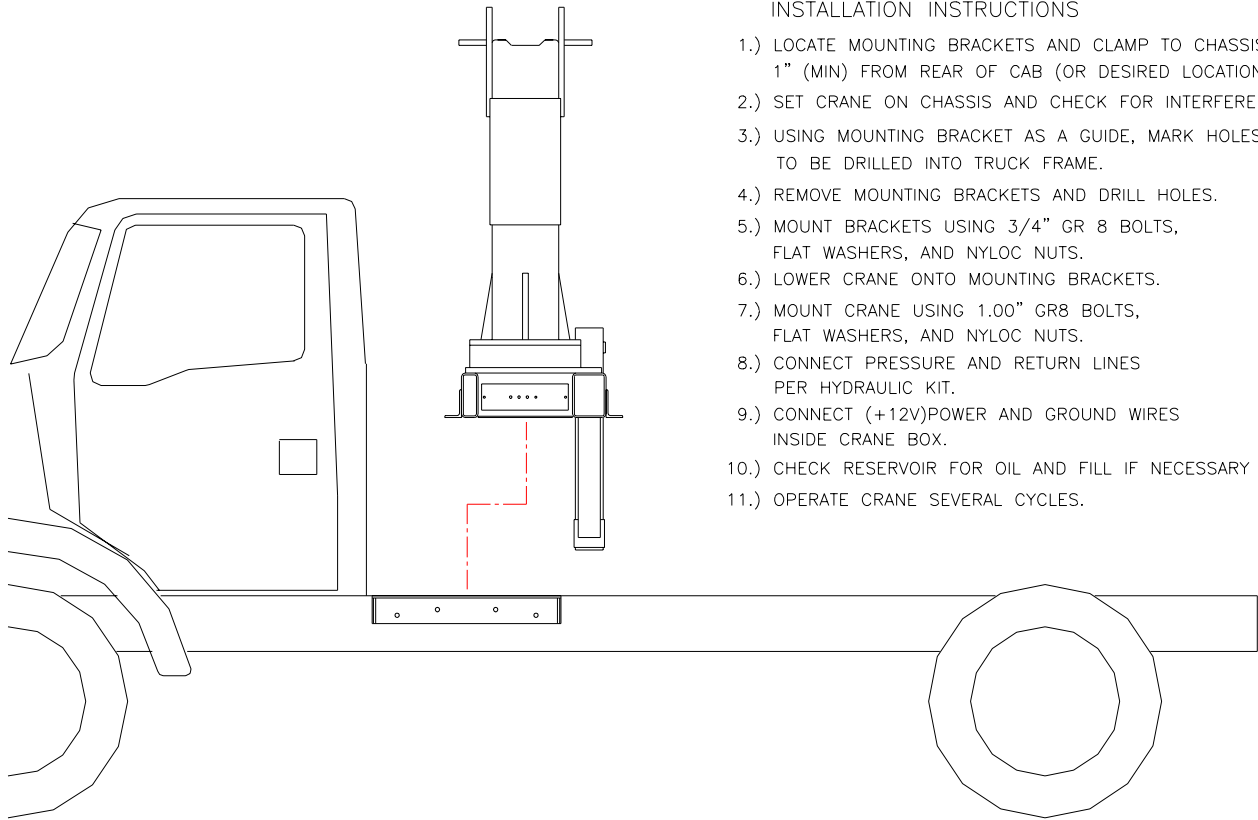
12	C4815	SWITCH TOGGLE ON/OFF	1
11	16255	BATTERY CHARGER W/BTRY 110-3.6V	1
10	C4956	NUT #10-24 HH NYLOC SS	1
09	D1711	CAP SCR #10-24X0.50 BTNHD SS	1
08	6629	MAGNET	1
07	19076	WIRE HARNESS - CRANE	1
06	12981	WIRE HARNESS OVERLOAD ALARM	1
05	D0045	OVERLOAD ALARM	1
04	12135	WIRE HARNESS - RADIO	1
03	11833	TRANSMITTER (PART OF 1)	1
02	11847	RECEIVER (PART OF 1)	1
01	11832	RADIO SYSTEM 4 FUNCTION	1
ITEM	PART No.	DESCRIPTION	QTY

HYDRAULIC KIT



				35	C4922	FTG ADAPT 4-6 F50LO-S	2
17	3862	SWITCH PRESSURE OVERLOAD	1	34	C1854	FTG ADAPT 6-8 F50LO-S	1
16	C6227	FILTER SHORT	1	33	C4935	FTG ADAPT 4-6 C50LO	2
15	C6226	FILTER HEAD	1	32	12153	PLUG HOLLOW HEX 0.63 10HP50N	2
14	7350	FTG ST RUN TEE 8R50LO	1	31	C1855	FTG ADAPT 6-10 F50LO-S	1
13	D1291	FTG ADAPT 4-F50LO-S	2	30	D1535	PLUG HOLLOW HEX	1
12	0279	FTG ADAPT 6-F50LO-S	4	29	10980	FTG ADAPT MSTR/FSTR 6410-8-4	4
11	C5572	FTG ORFS/OBR 45 DEG ILL 4-V50LO	2	28	C1198	FTG SL LOK ELL 4-C50LO-S	4
10	13289	HOSE-HYD .50 X 74	1ref	27	12160	FTG ADAPT 4-8 F50LO	4
09	13023	HOSE-HYD .50 X 122	2ref	26	C1054	NIPPLE, 0.75X6.00	1
08	13024	HOSE-HYD .38 X 122	1ref	25	C2244	ELBOW, 90'	2
07	13010	HOSE-HYD .25 X 99	2ref	24	6397	PRESSURE GAUGE	1
06	5358	HOSE-HYD .25 X 122	2ref	23	6834	FTG TEE MODIFIED C2343	1
05	13021	HOSE-HYD .25 X 158	2ref	22	C5547	FTG STRGHT THRD ELL 6-8-C50LO-S	4
04	13000	HOSE-HYD .25 X 132	2ref	21	C2252	FTG ADAPT SL LOK 8-10-F50LO-S	1
03	12999	HOSE-HYD .38 X 73	2ref	20	1554	FTG ADAPT 8-F50LO-S	1
02	12998	HOSE-HYD .38 X 55	2ref	19	C1111	FTG ADAPT MSTR/FSTR 10-6 F50G5	2
01	13321	HOSE KIT,6000 CRANE (incl:2-11)	1	18	3861	FTG ML FM O'RING 90 DEG	1
ITEM	PART No.	DESCRIPTION	QTY	ITEM	PART No.	DESCRIPTION	QTY

INSTALLATION KIT

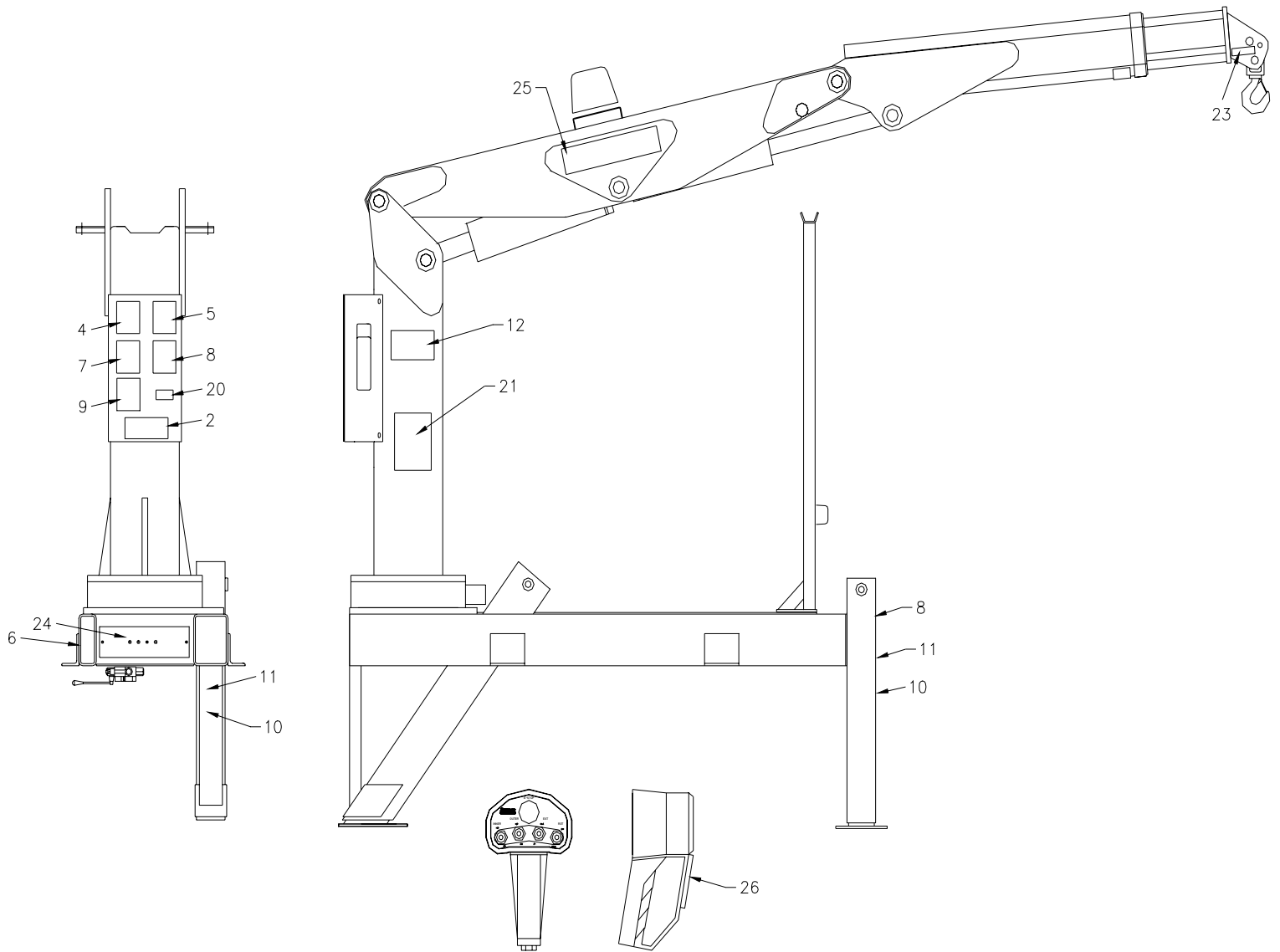


INSTALLATION INSTRUCTIONS

- 1.) LOCATE MOUNTING BRACKETS AND CLAMP TO CHASSIS 1" (MIN) FROM REAR OF CAB (OR DESIRED LOCATION).
- 2.) SET CRANE ON CHASSIS AND CHECK FOR INTERFERENCES.
- 3.) USING MOUNTING BRACKET AS A GUIDE, MARK HOLES TO BE DRILLED INTO TRUCK FRAME.
- 4.) REMOVE MOUNTING BRACKETS AND DRILL HOLES.
- 5.) MOUNT BRACKETS USING 3/4" GR 8 BOLTS, FLAT WASHERS, AND NYLOC NUTS.
- 6.) LOWER CRANE ONTO MOUNTING BRACKETS.
- 7.) MOUNT CRANE USING 1.00" GR8 BOLTS, FLAT WASHERS, AND NYLOC NUTS.
- 8.) CONNECT PRESSURE AND RETURN LINES PER HYDRAULIC KIT.
- 9.) CONNECT (+12V)POWER AND GROUND WIRES INSIDE CRANE BOX.
- 10.) CHECK RESERVOIR FOR OIL AND FILL IF NECESSARY
- 11.) OPERATE CRANE SEVERAL CYCLES.

07	6294	NUT, 1.00-8 NYLOC	4
06	6538	WASHER, 1.00 FLAT SAE	8
05	5199	CAP SCR, 1.00-8 X 3.00 HHGR8	4
04	C0538	NUT, 0.75-10 NYLOC	8
03	C6219	WASHER, FLAT .75 SAE	16
02	C1028	CAP SCR, 0.75-10 X 3.00 HHGR8	8
01	5138	TIE DOWN, 6000 CRANE	2
ITEM	PART No.	DESCRIPTION	QTY

DECAL KIT



13	.	.	.
12	C1179	DECAL-ELECTROCUTION 4.5x7.5	2
11	C5918	DECAL-DANGER MOVING O.R.	2
10	C4795	DECAL-DANGER O.R.	2
09	4190	DECAL-DANGER	1
08	C4541	DECAL-DANGER STOWING	2
07	4189	DECAL-DANGER	1
06	13036	DECAL-CRANE OUTRIGGER	1
05	C4544	DECAL-DANGER	1
04	C4540	DECAL-DANGER	1
03	*C4545	DECAL-ELECTROCUTION 5x13	4
02	4187	DECAL-ELECTROCUTION 3.25x7.5	1
01	4188	DECAL-ALIGNMENT	1
ITEM	PART No.	DESCRIPTION	QTY

26	6832	DECAL-MAGNET COVER	1
25	5164	DECAL-IDENTIFICATION	2
24	4158	DECAL-OR PANEL	1
23	16973	DECAL-STELLAR ATTACHMT	2
22	.	.	.
21	5165	DECAL-CAPACITY	2
20	4214	DECAL-SERVICE	1
19	*4305	DECAL-FLOOD LIGHT	1
18	*C0568	DECAL-DIESEL FUEL ONLY	2
17	*C5911	DECAL-STELLAR 2x4.5	3
16	*C5910	DECAL-STELLAR 4x9.5	1
15	.	.	.
14	.	.	.
ITEM	PART No.	DESCRIPTION	QTY

*THESE DECALS NOT SHOWN
(USE WITH BODY PACKAGE)

Limited Warranty Statement

for Stellar Tire Service Trucks, Truck-mounted Cranes, Truck-mounted Stellarc Welders & Truck-mounted Compressed Air Systems ONLY

Stellar Industries, Inc. (Stellar) warrants products designed and manufactured by Stellar to be free from defects in material and workmanship under proper use and maintenance. Products must be installed and operated in accordance with Stellar's written instructions and stated lifting capacities. The warranty period shall be Twelve (12) month warranty on all Stellar designed and fabricated parts, and Ninety (90) days repair labor.

The warranty period shall begin from the date recorded by Stellar as the in-service date. This date will be derived from the completed warranty registration card. In the event a warranty registration card is not received by Stellar, the factory ship date will be used. Stellar's obligation under this warranty is limited to, and the sole remedy for any such defect shall be, the repair and/or replacement (at Stellar's option) of the part and/or component in question. Stellar after-sales service personnel must be notified by telephone, fax, e-mail, or mail of any warranty-applicable damage within fourteen (14) days of its occurrence. If at all possible, Stellar will ship the replacement part within 24-hours of notification by the most economical, yet expedient, means possible. Expedited freight delivery will be at the expense of the owner.

Warranty claims must be submitted and shall be processed in accordance with Stellar's established warranty claim procedure. Stellar Service personnel must be contacted prior to any warranty claim. A return materials authorization (RMA) account number must be issued to the claiming party prior to the return of any warranty parts. Parts returned without prior authorization will not be recognized for warranty consideration. All damaged parts must be returned to Stellar freight prepaid; freight collect returns will be refused.

Warranty service will be performed by any Stellar new equipment distributor, or by any Stellar-recognized service center authorized to service the type of product involved, or at the Stellar factory. At the time of requesting warranty service, the owner must present evidence of date of delivery of the product. The owner shall be obligated to pay for any overtime labor requested of the servicing company by the owner, any field service call charges, and any towing and/or transportation charges associated with moving the equipment to the designated repair/service provider.

All obligations of Stellar and its authorized dealers and service providers shall be voided if someone other than an authorized Stellar dealer provides other than routine maintenance service without prior written approval from Stellar. In the case repair work is performed on the Stellar-manufactured product, original Stellar parts must be used to keep the warranty in force. The warranty may also be voided if the product is modified or altered in any way not approved, in writing, by Stellar engineering.

The owner/operator is responsible for furnishing proof of the date of original purchase of the Stellar product in question. Warranty registration is the ultimate responsibility of the owner and may be accomplished by the completion and return of the Stellar product registration card provided with the product. If the owner is unsure of registration, he is encouraged to contact Stellar at the address below to confirm registration of the product in question. This warranty covers only defective material and workmanship. It does not cover depreciation or damage caused by normal wear and tear, accident, mishap, untrained operators, or improper or unintended use. The owner has the obligation of performing routine care and maintenance duties as stated in Stellar's written instructions, recommendations, and specifications. Any damage resulting from owner/operator failure to perform such duties shall void the coverage of this warranty. The cost of labor and supplies associated with routine maintenance will be paid by the owner.

The only remedies the owner has in connection with the breach or performance of any warranty on the Stellar product specified are those set above. In no event will Stellar, the Stellar distributor/dealer, or any company affiliated with Stellar be liable for business interruptions, costs of delay, or for any special, indirect, incidental, or consequential costs or damages. Such costs may include, but are not limited to, loss of time, loss of revenue, loss of use, wages, salaries, commissions, lodging, meals, towing, hydraulic fluid, or any other incidental cost.

All products purchased by Stellar from outside vendors shall be covered by the warranty offered by that respective manufacturer only. Stellar does not participate in, or obligate itself to, any such warranty.

Hydraulic cylinders used in Stellar products are subject to the same warranty provisions stated above. Should a cylinder defect develop within the above stated warranty period, notify Stellar immediately. Stellar will ship, freight prepaid, by the most effective, expedient, means a new or re-manufactured cylinder of the same size and type. An authorization for return of the original part will be issued at the time the order is placed. The defective cylinder is to be returned to Stellar freight prepaid by the owner. Cylinders returned freight collect will be refused. Should the defective cylinder not be returned within 30 days of shipping the replacement cylinder, the owner is responsible to pay Stellar the full purchase price of the replacement part.

Stellar reserves the right to make changes in design or improvement upon its products without imposing upon itself the same upon its products theretofore manufactured.

This warranty will apply to all Stellar Tire Service Trucks, Truck-mounted Cranes, Truck-mounted Stellarc Welders & Truck-mounted Compressed Air Systems shipped from Stellar's factory after January 1, 1997. The warranty is for the use of the original owner only and is not transferable without prior written permission from Stellar.

THIS WARRANTY IS EXPRESSLY IN LIEU OF ANY OTHER WARRANTIES, EXPRESS OR IMPLIED, INCLUDING ANY WARRANTY OF MERCHANTABILITY OR FITNESS FOR A PARTICULAR PURPOSE. REMEDIES UNDER THIS WARRANTY ARE LIMITED TO THE PROVISION OF MATERIAL AND SERVICES, AS SPECIFIED HEREIN. STELLAR INDUSTRIES, INC. IS NOT RESPONSIBLE FOR INCIDENTAL OR CONSEQUENTIAL DAMAGES.

Stellar Industries, Inc. • 280 West Third Street • Garner, Iowa 50438 • U.S.A.

E-Mail • sales@stellar-industries.com

Telephone: 800/321-3741; 641/923-3741 • Fax: 641/923-2812; 641/923-2811

Revised 10/05/2000