



# CRANE MODEL 9000

280 W. 3<sup>rd</sup> St., Box 169 • Garner, IA 50438 • Phone: 515-923-3741 • Fax: 515-923-2812

UPDATED 01/24/04

# TABLE OF CONTENTS

## STELLAR CRANE 9000

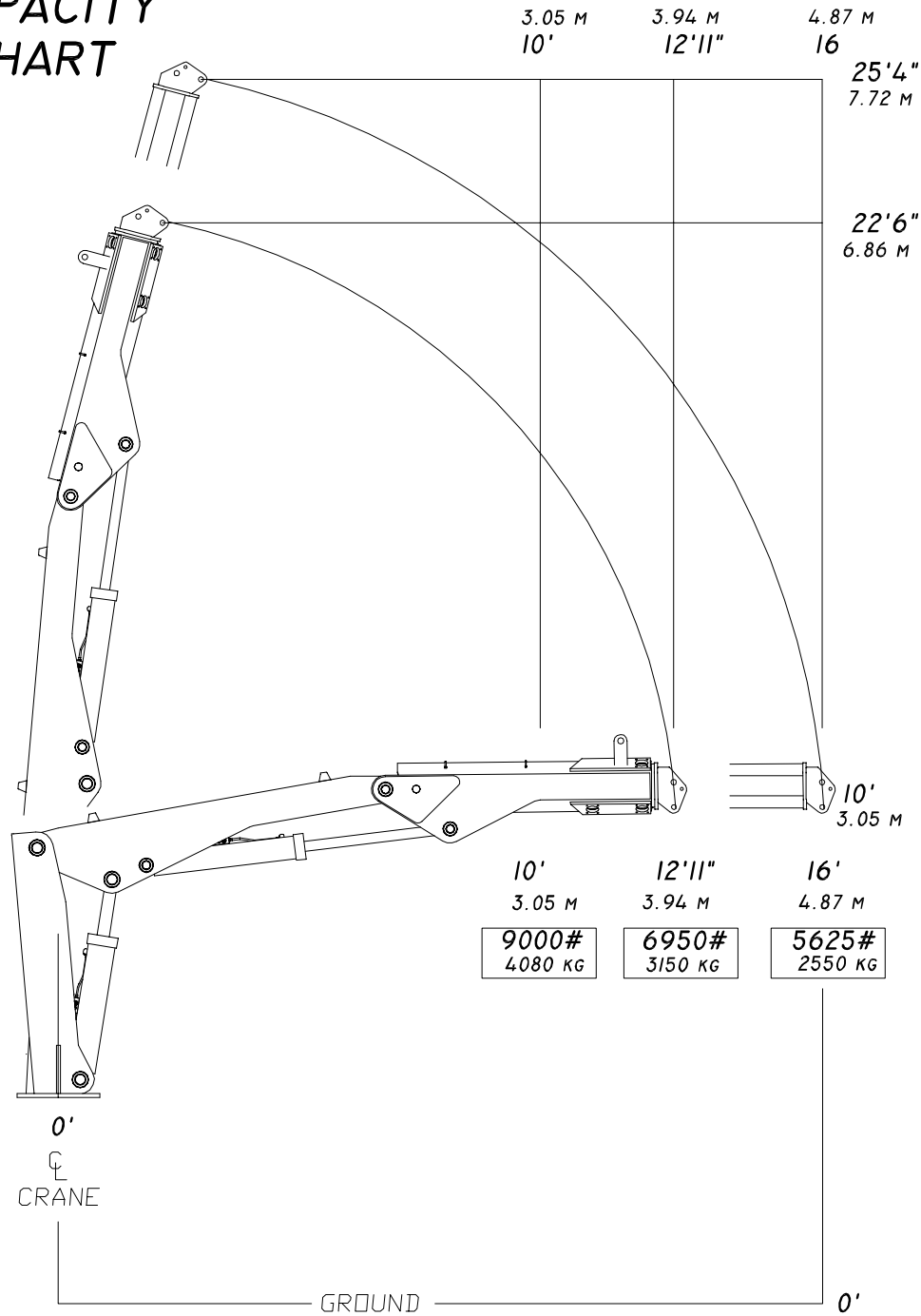
SPECIFICATION SHEET .....	3
CAPACITY CHART .....	4
CRANE OPERATION .....	5
MANUAL OPERATION .....	5
MANUAL OPERATION .....	6
BASE ASSEMBLY .....	7
BASE ASSEMBLY .....	8
MAST ASSEMBLY .....	9
CYLINDER ASSEMBLY .....	10
MAIN BOOM ASSEMBLY .....	11
CYLINDER ASSEMBLY .....	12
EXTENSION BOOM ASSEMBLY .....	13
CONTROL KIT .....	14
HYDRAULIC KIT .....	15
INSTALLATION KIT .....	16
DECAL KIT .....	17

## SPECIFICATION SHEET

Crane Rating	90,000 ft-lbs (12.44 ton-meters)
Standard Boom Length	12'11"(3.94 m)-from CL of Crane
Boom Extension	Hydraulic 37"(94 cm)
Maximum Horizontal Reach	16'(4.87 m)-from CL of Crane
Maximum Vertical Lift (from truck frame)	22'(6.71 m)
Inner Lift Cylinder	6"(15.24 cm) bore with integral pilot operated counterbalance valves.
Outer Lift Cylinder	5"(12.70 cm) bore with integral pilot operated counterbalance valves.
Extension Cylinder	3.50"(8.89 cm) bore with integral pilot operated counterbalance valves.
Rotation	290 degree power (worm gear drive)
Lifting Capacities	9,000lbs @ 10'(4080 kg @ 3.03m) 6,950 lbs @ 12'11"(3150 kg @ 3.94 m) 5,625 lbs @ 16'(2550 kg @ 4.87 m)
Power Supply Required	PTO & Pump (8 gpm @ 3000 psi) (30.3 lpm @ 206 bars)
Controls	(Radio control standard)
Stowed Height (above truck frame)	84 inches (213.4 cm)
Mounting Space Required	32 inches (81.3 cm)
Approximate Shipping Weight	4000 pounds (1590 kg)

# CAPACITY CHART

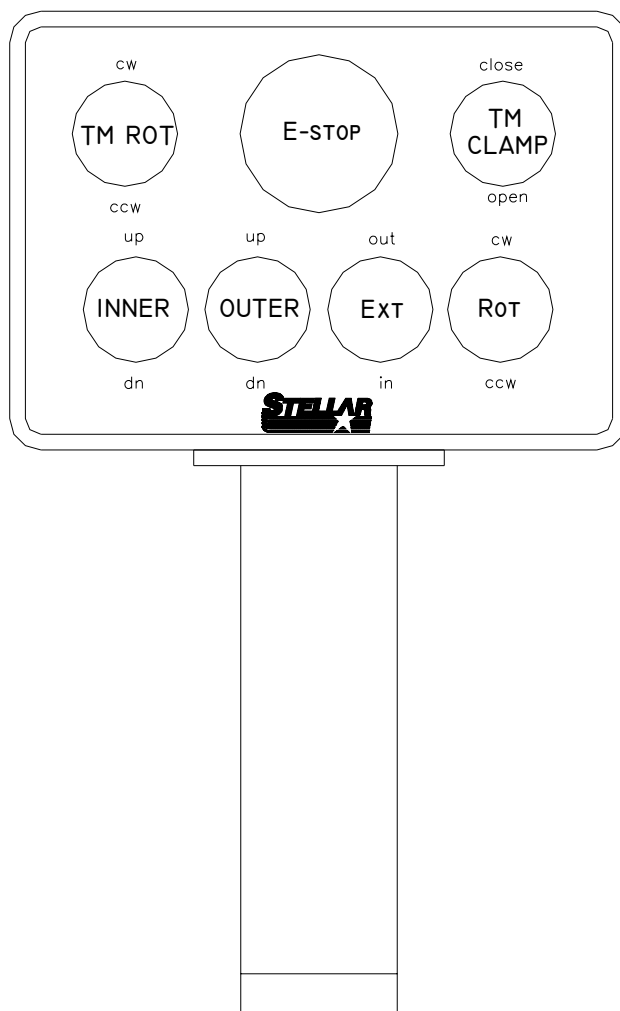
## CAPACITY CHART



# STELLAR 9000

29559

# CRANE OPERATION



This crane is operated by a radio control system which operates an electronic valve bank. The controller (as shown) operates the following functions:

- inner boom up and down
- outer boom up and down
- extension boom in and out
- rotation cw and ccw
- tireman rotation cw and ccw
- tireman clamp open and close

# MANUAL OPERATION

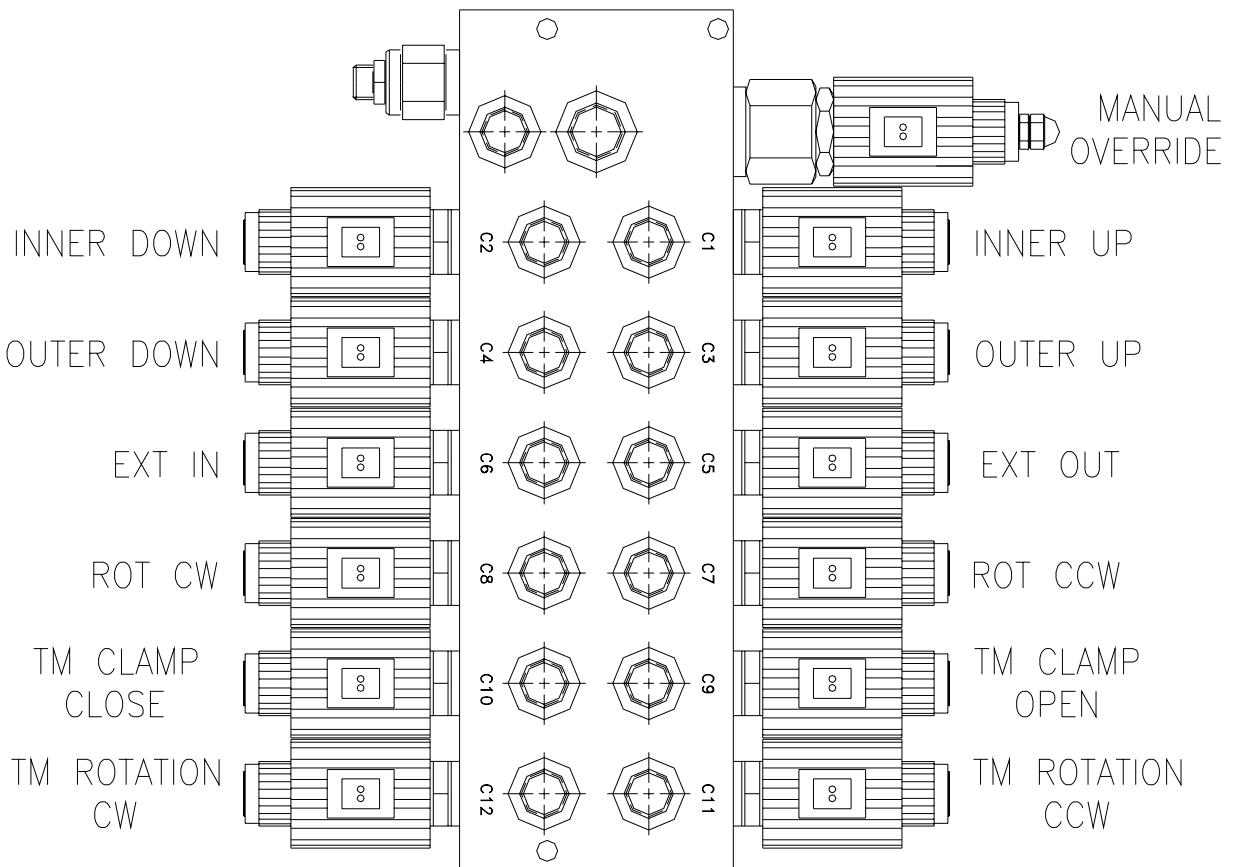
IN CASE OF RADIO FAILURE THE CRANE CAN BE OPERATED USING MANUAL OVERRIDES LOCATED ON THE VALVE BANK. USE THE MANUAL OVERRIDES **ONLY** TO GET HE CRANE INTO A STOWED POSITION FOR TRAVEL. HAVE THE EQUIPMENT SERVICED FOR NORMAL RADIO USE.

## WARNING

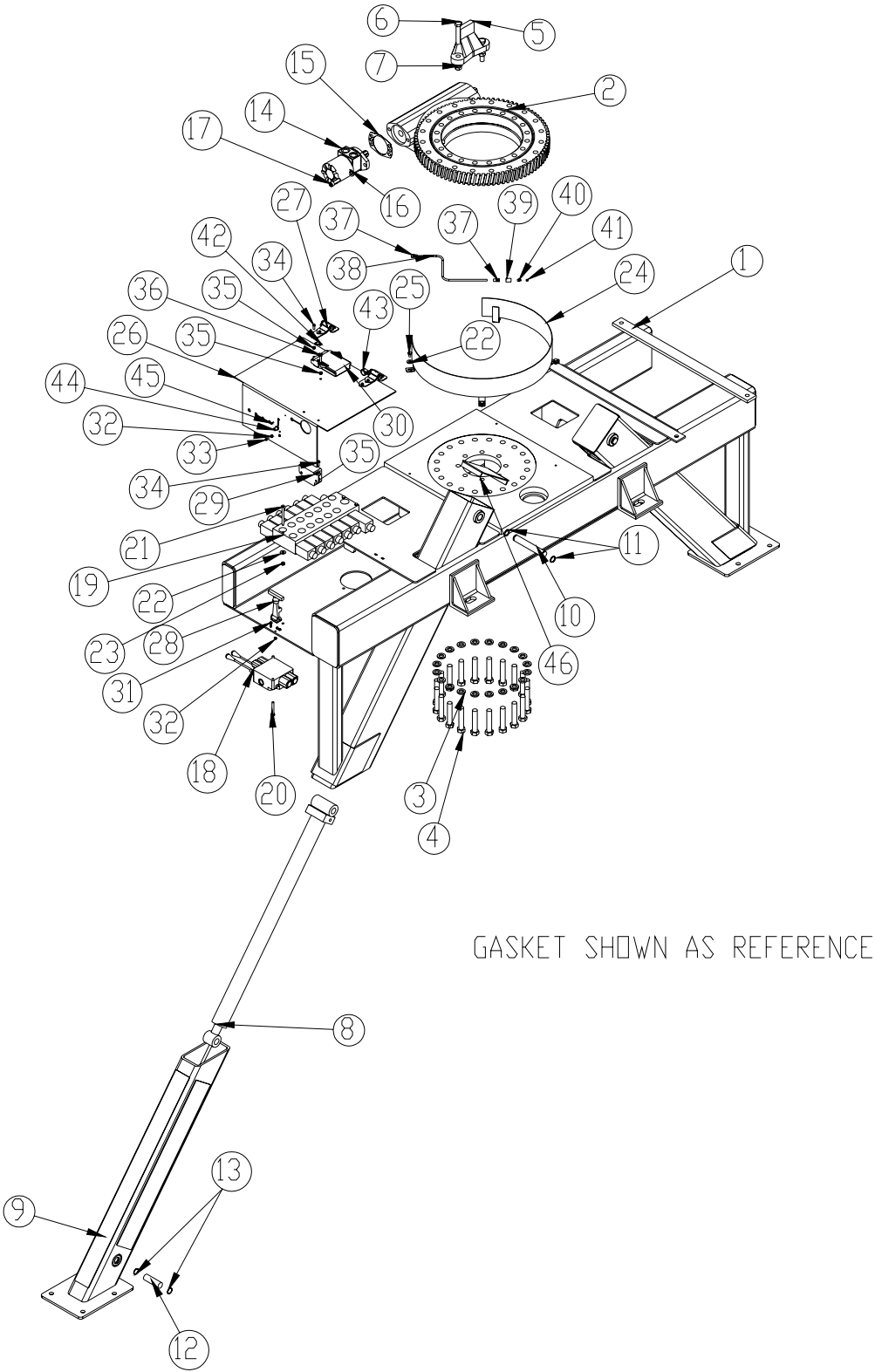
PROLONGED MANUAL OPERATION WILL CAUSE SEVERE DAMAGE TO THE HYDRAULIC SYSTEM

### TO OPERATE CRANE MANUALLY

1. LOOSEN JAM NUT ON FLOW CONTROL
2. TURN THE SET SCREW FULLY CLOCKWISE
3. OPERATE FUNCTIONS AS NEEDED OT STOW CRANE
4. TURN THE SET SCREW FULLY COUNTER CLOCKWISE
5. HAVE UNIT SERVICED



**BASE ASSEMBLY**  
**P/N 29349**

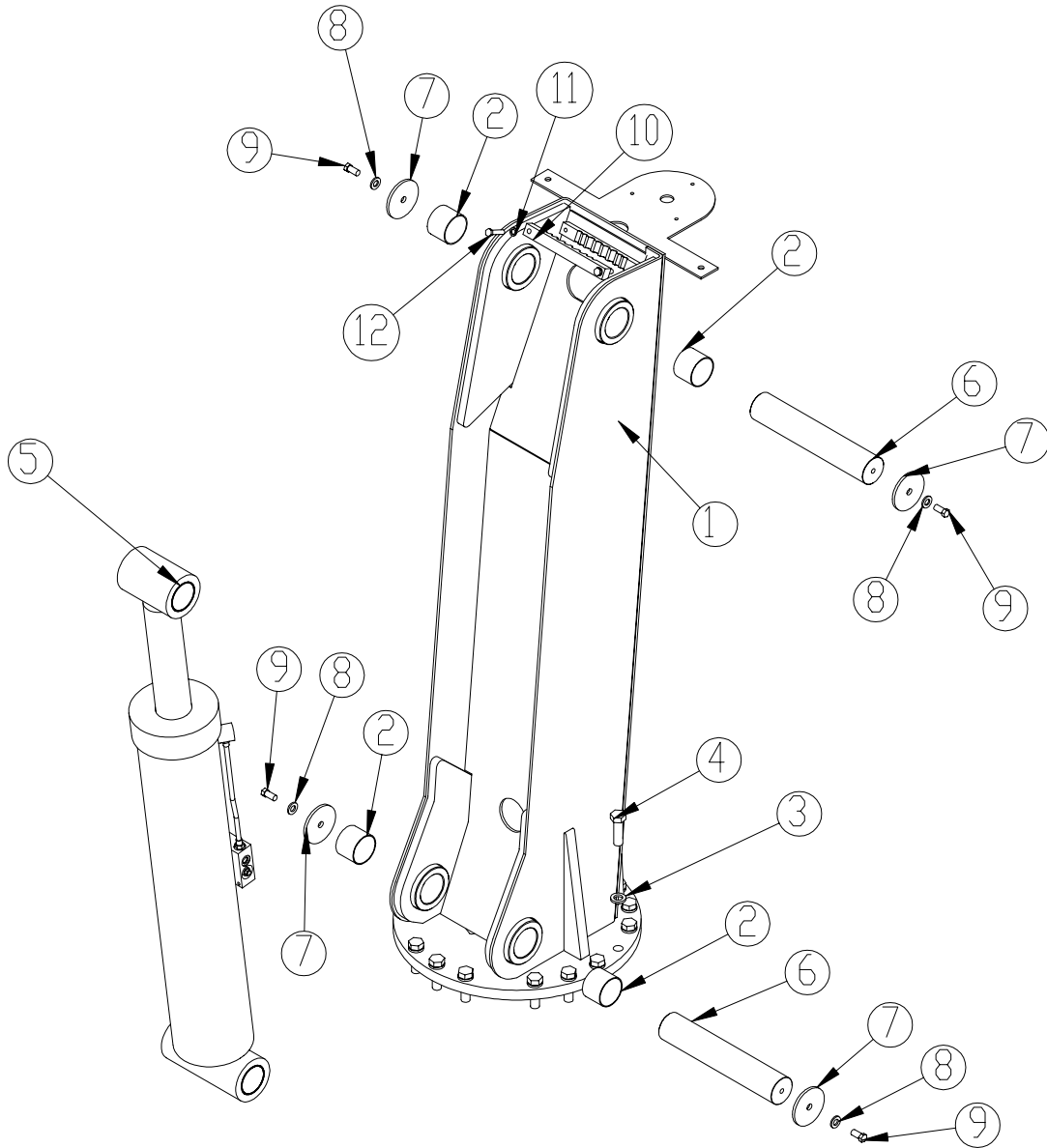


# BASE ASSEMBLY

## P/N 29349

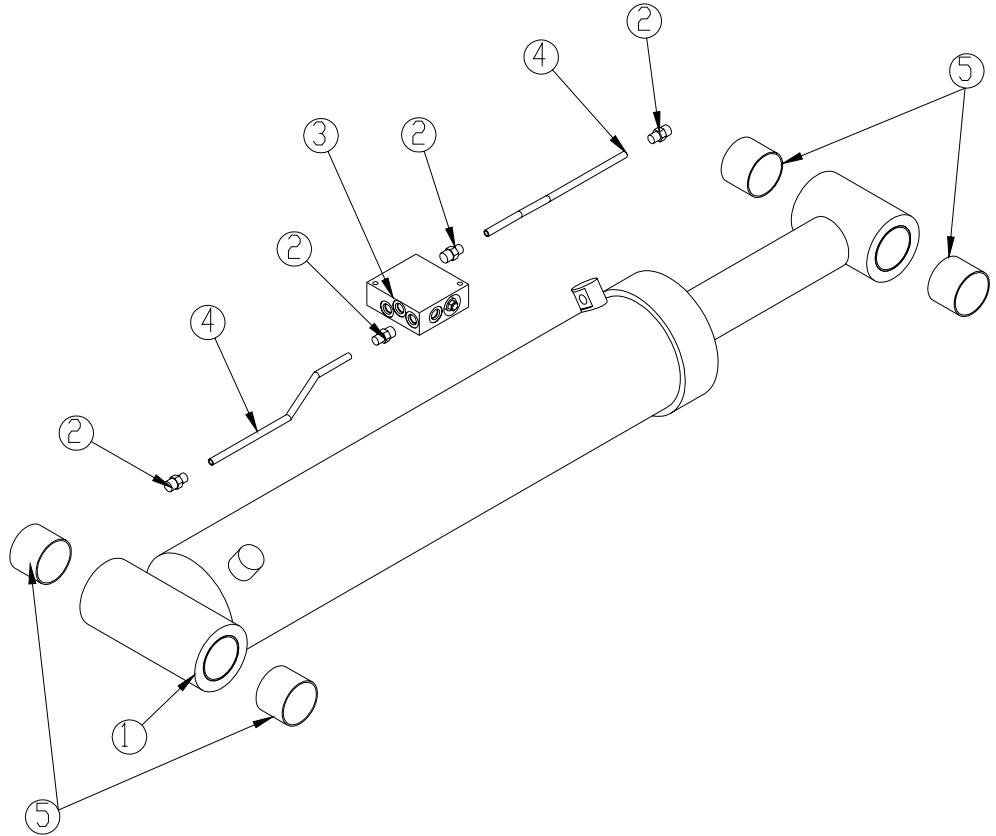
ITEM	PART	DESCRIPTION	QTY.	ITEM	PART	DESCRIPTION	QTY.
1	28844	BASE 9000	1	24	26766	GUARD TTB 6000 GP BEARING	1
2	29348	BEARING SWING DRIVE 9000	1	25	0484	CAP SCR 0.31-18 X 0.50 HHGR5	4
3	C6219	WASHER 0.75 SAE FLAT YELLOW GR8	20	26	30005	COVER BASE 9000	1
4	C6218	CAP SCR 0.75-10X4.00 HHGR8 ZY	20	27	C6001	HINGE SS FLUSH	2
5	4074	STOP ROTATION 3200	1	28	C4816	LATCH RUBBER (T) ZINC	1
6	D1312	CAP SCR 0.63-11X3.50 HHGR8	2	29	D0045	BACKUP ALARM .97 DECIBAL	1ref
7	2826	NUT 0.63-11 HH NYLOC	2	30	28836	RECEIVER RADIO CONTROL 6 FCTN OMNEX	1ref
8	D0773	CYLINDER 2.00X25.50	2	31	D0894	SCREW #10-24X0.75 BTN HD SS	3
9	4817	OUTRIGGER LEG SS 6000	2	32	C4956	NUT #10-24 HH NYLOC SS	5
10	3796	PIN 1.00X6.50	2	33	D1711	CAP SCR #10-24X0.50 BTNHD SS	2
11	0110	SNAP RING 1.00 ID 7200-100	4	34	C6021	CAP SCR 0.25-20X0.75 BTNHD SS	10
12	4912	PIN 1.00X3.25	2	35	0333	NUT 0.25-20 HHGR5 NYLOC	12
13	3875	SNAP RING 1.00 INTERNAL	4	36	D0528	CAP SCR 0.25-20X1.25 BTNHD SS	2
14	11458	MOTOR HYD ROSS MK080613AAAB	1	37	D1345	FTG CPRSN 0.12NPT/0.25 TUBE	2
15	21151	GASKET MOTOR 008-10056-1	1	38	D1810	TBE AIR SAEJ844 TYPE A .25	53"
16	D0790	WASHER 0.50 FLAT GR8	2	39	C2256	FTG COUPLER PIPE 0.13	1
17	D1295	CAP SCR 0.50-13X1.50 SH GR5	2	40	c1592	ZERK 1/8 NPT STRAIGHT	1
18	10974	VB 2 SECT W/PB VDM6-4-4-YE-HP	1	41	C4808	CAP PLASTIC (RED)	1
19	19020	VB 6 SECT ELECT W/PROP VLV COMMAND	1	42	C5606	CLAMP 0.25 BLK VINYL	1
20	C0927	CAP SCR 0.31-18X2.25 HHGR5	2	43	C5946	HOSE CLAMP #8 RUBBER COATED	1
21	0490	CAP SCR 0.31-18X3.50 HHGR5	3	44	30489	CAP CORDED BACKUP OMNEX	1
22	0343	WASHER 0.31 USS FLAT ZINC	7	45	18611	SCREW #6-32X0.38 HH MACH SELF TAP	1
23	0342	NUT 0.31-18 HH NYLOC	3	46	30490	CAP ASM OUTRIGGER SLANT	2

# MAST ASSEMBLY P/N 29350



ITEM	PART	DESCRIPTION	QTY.	ITEM	PART	DESCRIPTION	QTY.
1	27981	MAST 9000	1	7	8377	PIN CAP 0.56X3.50X.25	4
2	0635	BUSHING 40DXR32 GARLOCK	4	8	D0790	WASHER 0.50 FLAT GR8	4
3	C6219	WASHER 0.75 SAE FLAT YELLOW GR8	18	9	10172	CAP SCR 0.50-13X1.00 HHGR8	4
4	4974	CAP SCR 0.75-10X2.50 HHGR8 ZY	18	10	30009	HOSE CLAMP 9000	1
5	29352	CYLINDER ASM 6.00X28.63	1	11	0523	WASHER 0.38 LOCK	2
6	9730	PIN 2.50X13.25 D&T	2	12	C0944	CAP SCR 0.38-16X1.75 HHGR5	2

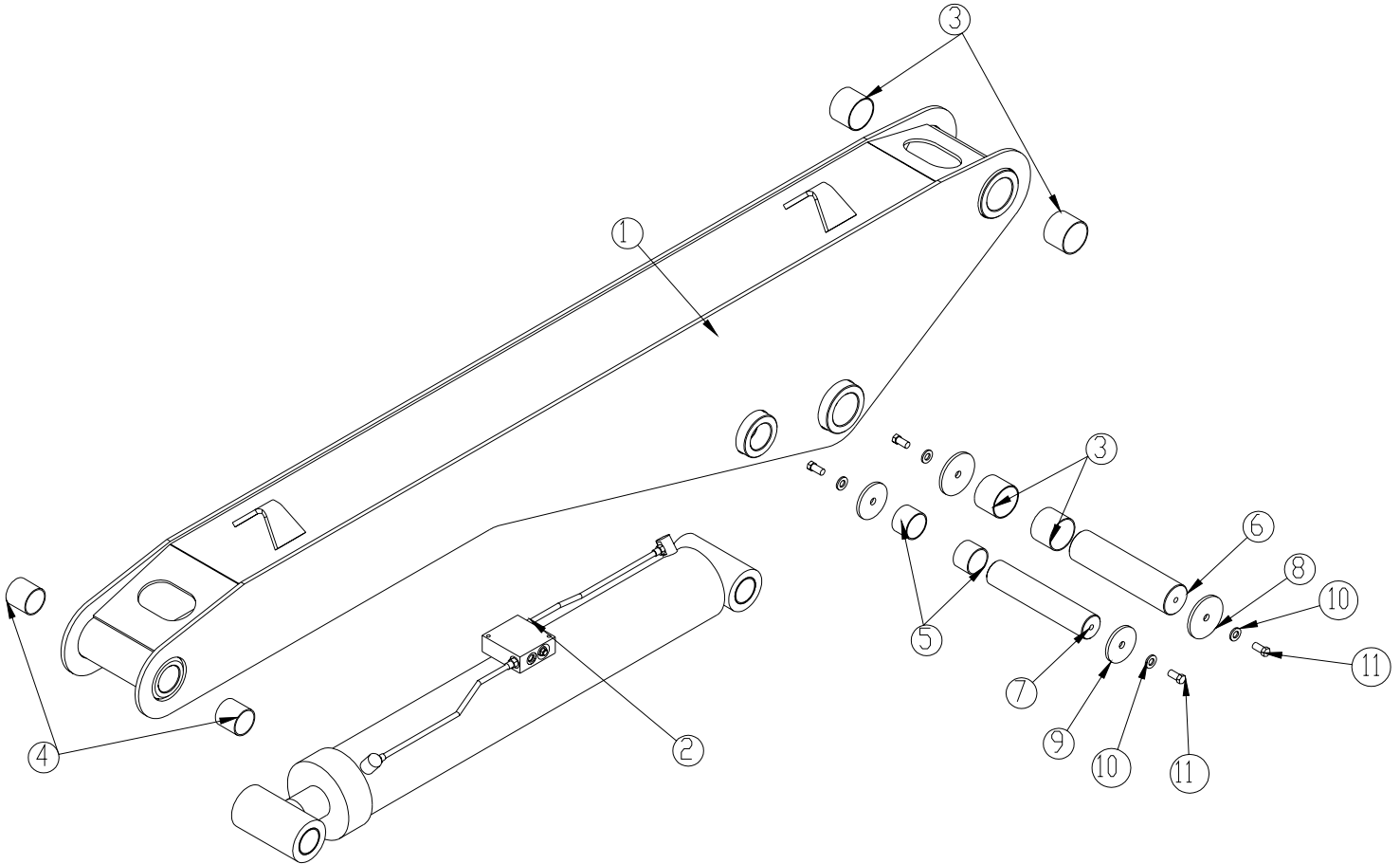
# CYLINDER ASSEMBLY P/N 29354



NOTE: BUSHINGS SHOWN FOR REFERENCE

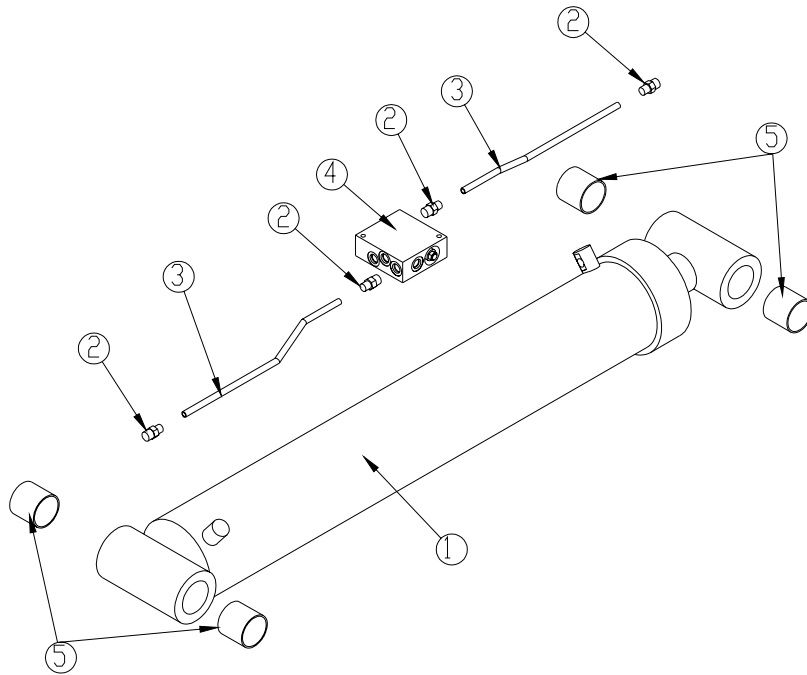
ITEM	PART	DESCRIPTION	QTY.
1	29351P	CYLINDER 6.00X28.63	1
2	0279	FTG ADAPT 6-F5OLO-S	4
3	16154	MANIFOLD DOUBLE T11A 3500 PSI	1
4	29353	TUBE ASM 0.38X11.39	2
5	0635	BUSHING 40DXR32 GARLOCK	4

# MAIN BOOM ASSEMBLY P/N 29354



ITEM	PART	DESCRIPTION	QTY.	ITEM	PART	DESCRIPTION	QTY.
1	28366	INNER BOOM 9000	1	7	9709	PIN 2.00X10.19 D&T	1
2	29356	CYLINDER ASM 5.00X30.00	1	8	8377	PIN CAP 0.56X3.50X.25	2
3	0635	BUSHING 40DXR32 GARLOCK	4	9	5145	PIN CAP 0.56X3.00X.25	2
4	4381	BUSHING 32DXR32 2.00X2.00 GARLOCK	2	10	D0790	WASHER 0.50 FLAT GR8	4
5	4380	BUSHING 32DXR24 2.00X1.50 GARLOCK	2	11	10172	CAP SCR 0.50-13X1.00 HHGR8	4
6	29358	PIN, 2.50X10.13 D&T	1				

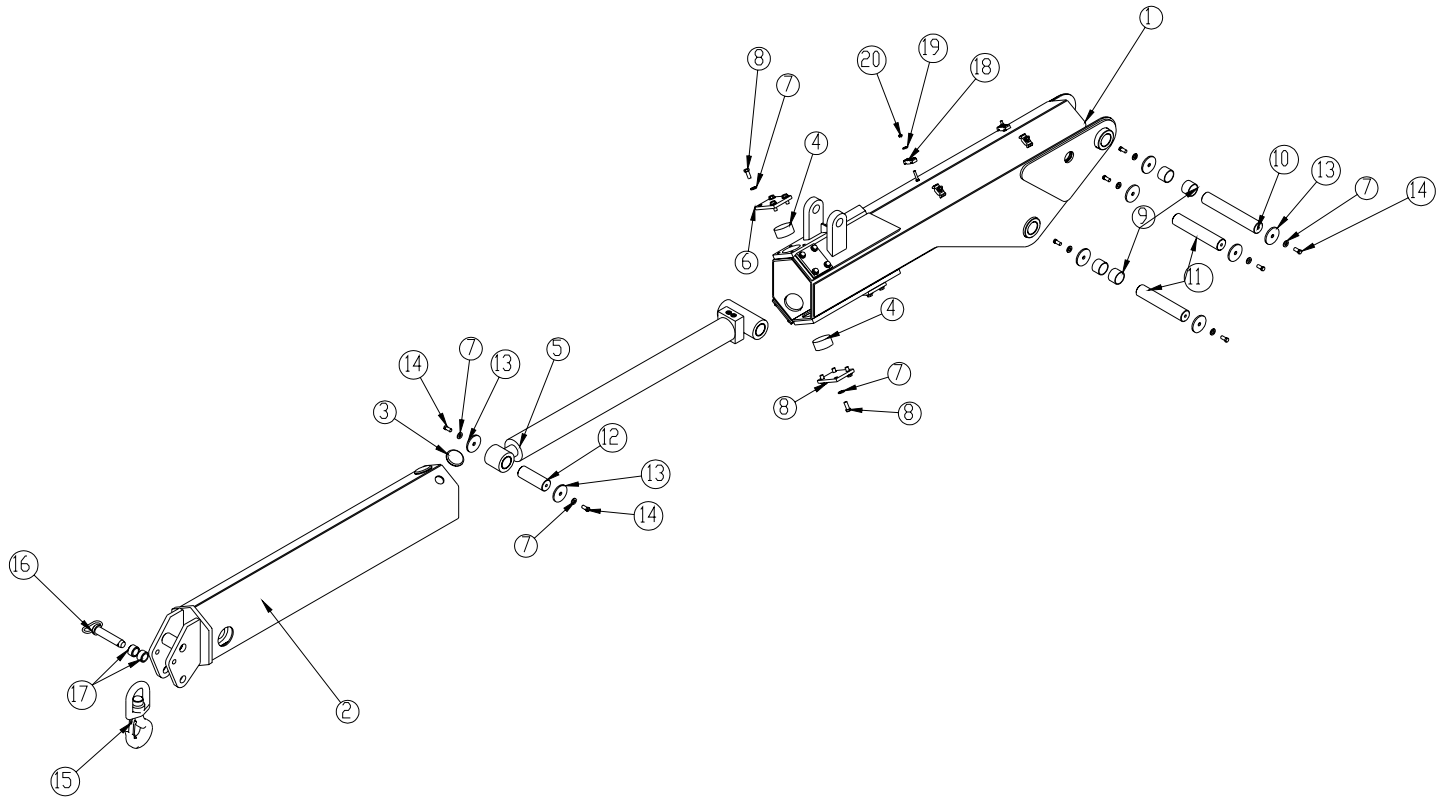
# CYLINDER ASSEMBLY P/N 29356



NOTE: BUSHINGS SHOWN FOR REFERENCE

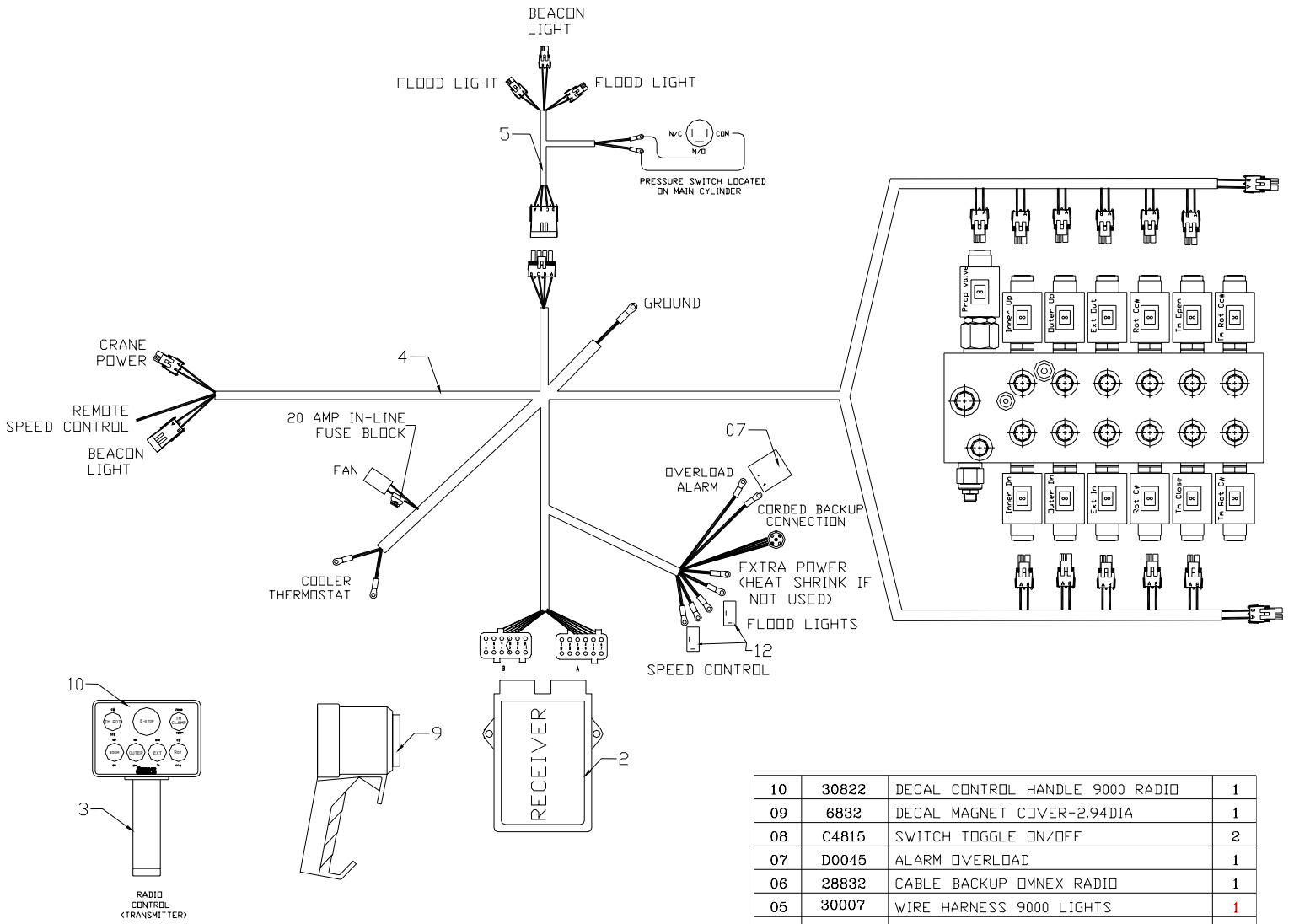
ITEM	PART	DESCRIPTION	QTY.
1	29355P	CYLINDER 5.00X30.00	1
2	0279	FTG ADAPT 6-F5OLO-S	4
3	29357	TUBE ASM 0.38X13.89	2
4	16154	MANIFOLD DOUBLE T11A 3500 PSI	1
5	4381	BUSHING 32DXR32 2.00X2.00 GARLOCK	4

# EXTENSION BOOM ASSEMBLY P/N 29359



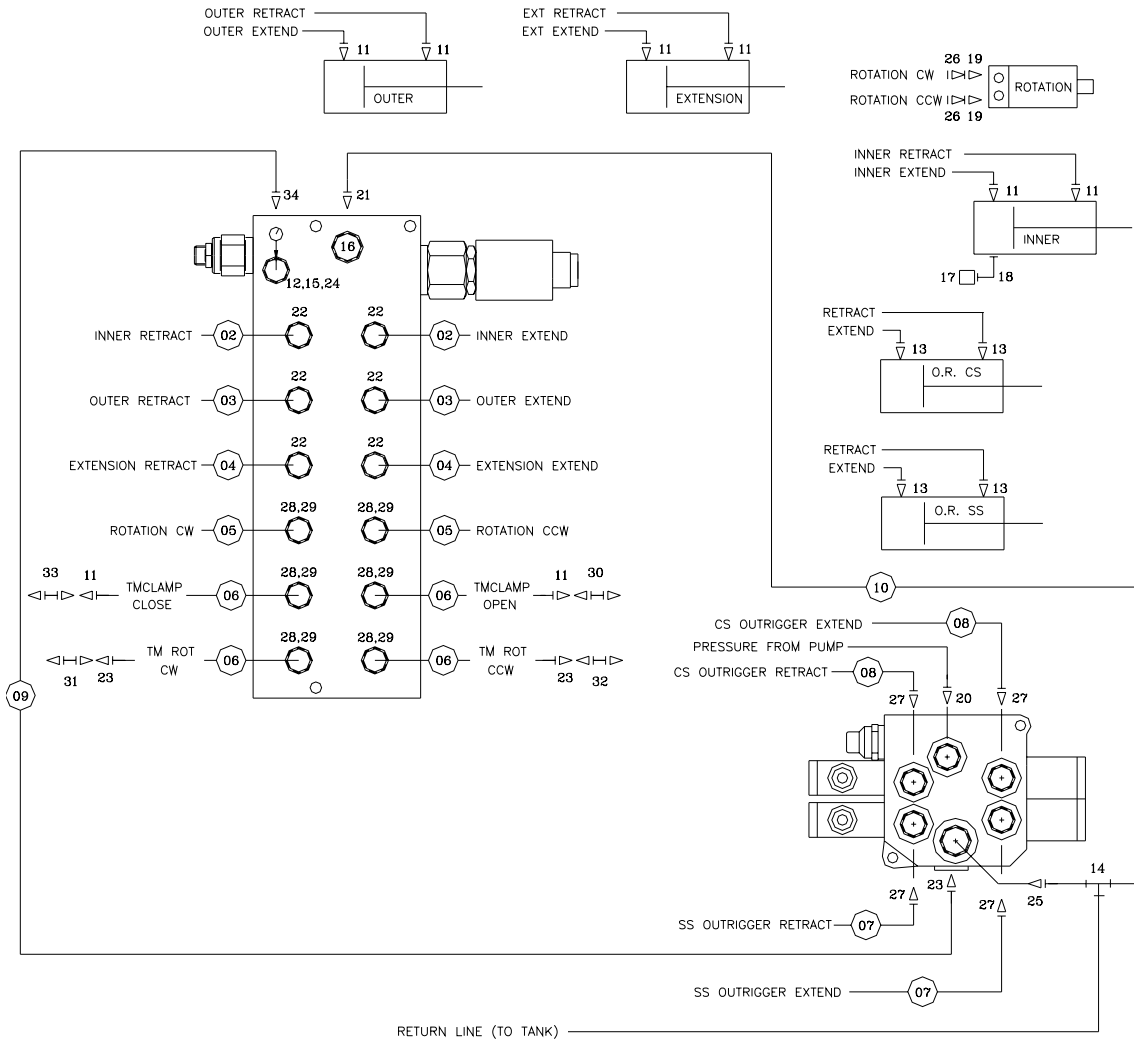
ITEM	PART	DESCRIPTION	QTY.	ITEM	PART	DESCRIPTION	QTY.
1	28375	OUTER BOOM 9000	1	11	20043	PIN 2.00X10.38 D&T	2
2	29231	EXT BOOM 9000	1	12	29552	PIN 2.00X5.63 D&T	1
3	30483	WEAR PAD 0.44X3.00 RND NYLATRON	2	13	5145	PIN CAP 0.56X3.00X.25	8
4	9435	WEAR PAD 1.44X3.00 RND NYLATRON	6	14	10172	CAP SCR 0.50-13X1.00 HHGR5	8
5	29360	CYLINDER 3.50X37.00	1	15	26762	HOOK 7 TON SWIVEL CROSBY 1028632	1
6	29551	COVER WEAR PAD 9000	6	16	5192	PIN HITCH 1.25X5.13	1
7	D0790	WASHER 0.50 FLAT GR8	32	17	28496	COLLAR 1.28x1.75x1.00	2
8	10666	CAP SCR 0.50-13X1.25 HHGR8	24	18	8622	CLAMP HOSE/TUBE AG-2	4
9	4380	BUSHING 32DXR24 2.00X1.50 GARLOCK	4	19	0343	WASHER 0.31 USS FLAT ZINC	4
10	20042	PIN 2.00X12.13 D&T	1	20	0342	NUT 0.31-18 HH NYLOC	4

# CONTROL KIT P/N 29556



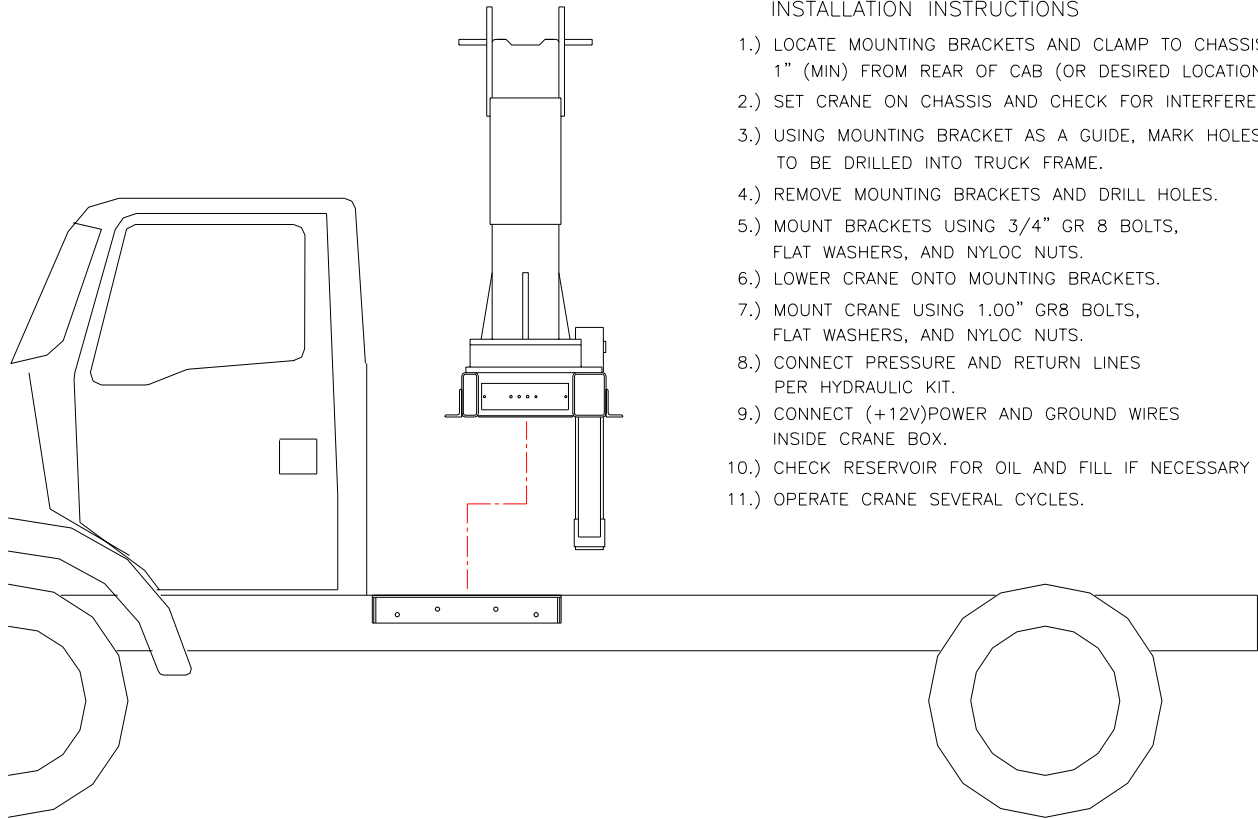
10	30822	DECAL CONTROL HANDLE 9000 RADIO	1
09	6832	DECAL MAGNET COVER-2.94DIA	1
08	C4815	SWITCH TOGGLE ON/OFF	2
07	D0045	ALARM OVERLOAD	1
06	28832	CABLE BACKUP OMNEX RADIO	1
05	30007	WIRE HARNESS 9000 LIGHTS	1
04	30006	WIRE HARNESS 9000	1
03	28837	TRANSMITTER (PART OF 1)	1
02	28836	RECEIVER (PART OF 1)	1
01	28831	RADIO CONTROLLER ASM 6 FCTN OMNEX	1

# HYDRAULIC KIT P/N 29557



17	7649	SWITCH PRESSURE OVERLOAD	1	34			
16	12153	PLUG HOLLOW HEX 0.63 10HP50N	1	33	13554	QUICK COUPLER 2FF114-38SAE-F	1
15	D1430	FTG ADAPT O'RING FMP 6-1/4 F50G-S	1	32	13557	QUICK COUPLER 2FFN38-12SAE-M	1
14	7350	FTG ST RUN TEE 8R50LO	1	31	13556	QUICK COUPLER 2FFN38-12SAE-F	1
13	C5572	FTG ADAPT MSTR/MFS 4-V50LO 45 DEG	4	30	13555	QUICK COUPLER 2FF114-38SAE-M	1
12	C0885	FTG ADAPT MSTR/FSTR 8-6 F50G5	1	29	10980	FTG ADAPT MSTR/FSTR 6410-8-4	8
11	0279	FTG ADAPT 6-F50LO-S	8	28	C1198	FTG SL LOK ELL 4-C50LO-S	8
10	30481	HOSE-HYD .50 X 17	1ref	27	12160	FTG ADAPT 4-8 F50LO	4
09	14637	HOSE-HYD .38 X 14	1ref	26	C4922	FTG ADAPT 4-6 C50LO	2
08	30480	HOSE-HYD .25 X65	2ref	25	14441	FTG ADAPT MSTR/FSTR 10-8 F50G5	1
07	30479	HOSE-HYD .25 X 65	2ref	24	6397	PRESSURE GAUGE	1
06	30478	HOSE-HYD .25 X 264	4ref	23	C1854	FTG ADAPT 6-8 F50LO-S	3
05	30477	HOSE-HYD .25 X 40	2ref	22	C5547	FTG STRGHT THRD ELL 6-8-C50LO-S	4
04	30476	HOSE-HYD .38 X 228	2ref	21	C2252	FTG ADAPT SL LOK 8-10-F50LO-S	1
03	30015	HOSE-HYD .38 X 184	2ref	20	1654	FTG ADAPT 8-F50LO-S	1
02	30014	HOSE-HYD .38 X 66	2ref	19	C1111	FTG ADAPT MSTR/FSTR 10-6 F50G5	2
01	29558	HOSE KIT,9000CRANE (incl:2-12)	1	18	3861	FTG ML FM O'RING 90 DEG	1
ITEM	PART No.	DESCRIPTION	QTY	ITEM	PART No.	DESCRIPTION	QTY

# INSTALLATION KIT P/N 29557

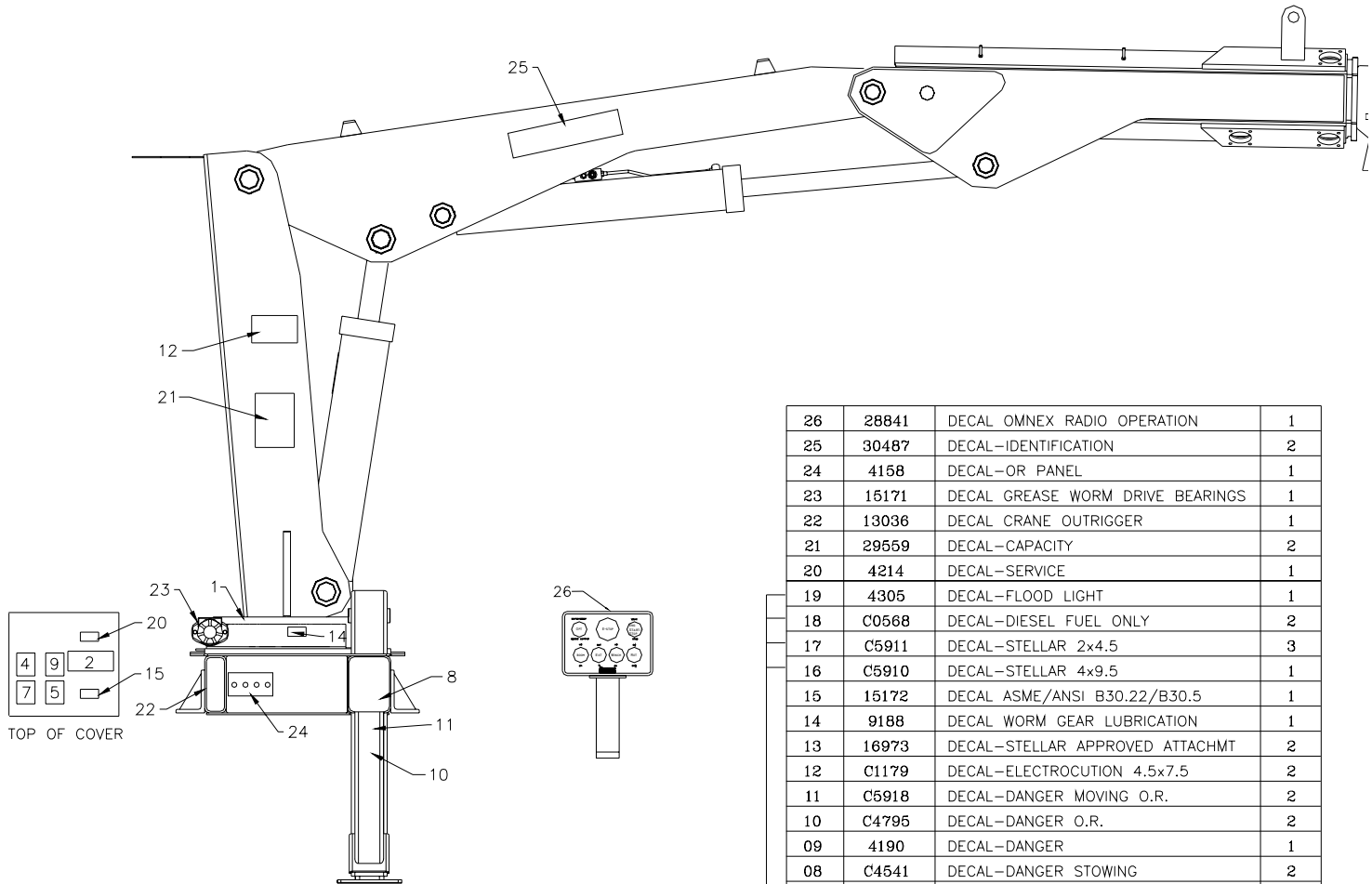


### INSTALLATION INSTRUCTIONS

- 1.) LOCATE MOUNTING BRACKETS AND CLAMP TO CHASSIS 1" (MIN) FROM REAR OF CAB (OR DESIRED LOCATION).
- 2.) SET CRANE ON CHASSIS AND CHECK FOR INTERFERENCES.
- 3.) USING MOUNTING BRACKET AS A GUIDE, MARK HOLES TO BE DRILLED INTO TRUCK FRAME.
- 4.) REMOVE MOUNTING BRACKETS AND DRILL HOLES.
- 5.) MOUNT BRACKETS USING 3/4" GR 8 BOLTS, FLAT WASHERS, AND NYLOC NUTS.
- 6.) LOWER CRANE ONTO MOUNTING BRACKETS.
- 7.) MOUNT CRANE USING 1.00" GR8 BOLTS, FLAT WASHERS, AND NYLOC NUTS.
- 8.) CONNECT PRESSURE AND RETURN LINES PER HYDRAULIC KIT.
- 9.) CONNECT (+12V)POWER AND GROUND WIRES INSIDE CRANE BOX.
- 10.) CHECK RESERVOIR FOR OIL AND FILL IF NECESSARY
- 11.) OPERATE CRANE SEVERAL CYCLES.

08	8919	TIE DOWN PLATE	4
07	6294	NUT, 1.00-8 NYLOC	4
06	6538	WASHER, 1.00 FLAT SAE	8
05	5199	CAP SCR, 1.00-8 X 3.00 HHGR8	4
04	C0538	NUT, 0.75-10 NYLOC	8
03	C6219	WASHER, FLAT .75 SAE	16
02	C1028	CAP SCR, 0.75-10 X 3.00 HHGR8	8
01	5138	TIE DOWN BRACKET	2
ITEM	PART No.	DESCRIPTION	QTY

# DECAL KIT P/N 30488



TOP OF COVER

THESE DECALS NOT SHOWN  
(USE WITH BODY PACKAGE)

26	28841	DECAL OMNEX RADIO OPERATION	1
25	30487	DECAL-IDENTIFICATION	2
24	4158	DECAL-OR PANEL	1
23	15171	DECAL GREASE WORM DRIVE BEARINGS	1
22	13036	DECAL CRANE OUTRIGGER	1
21	29559	DECAL-CAPACITY	2
20	4214	DECAL-SERVICE	1
19	4305	DECAL-FLOOD LIGHT	1
18	C0568	DECAL-DIESEL FUEL ONLY	2
17	C5911	DECAL-STELLAR 2x4.5	3
16	C5910	DECAL-STELLAR 4x9.5	1
15	15172	DECAL ASME/ANSI B30.22/B30.5	1
14	9188	DECAL WORM GEAR LUBRICATION	1
13	16973	DECAL-STELLAR APPROVED ATTACHMT	2
12	C1179	DECAL-ELECTROCUTION 4.5x7.5	2
11	C5918	DECAL-DANGER MOVING O.R.	2
10	C4795	DECAL-DANGER O.R.	2
09	4190	DECAL-DANGER	1
08	C4541	DECAL-DANGER STOWING	2
07	4189	DECAL-DANGER	1
06	4186	DECAL-ELECTROCUTION 2x2.75	1
05	C4544	DECAL-DANGER	1
04	C4540	DECAL-DANGER	1
03	C4545	DECAL-ELECTROCUTION 5x13	4
02	4187	DECAL-ELECTROCUTION 3.25x7.5	1
01	4188	DECAL-ALIGNMENT	1
ITEM	PART No.	DESCRIPTION	QTY

## **Limited Warranty Statement**

### **for Stellar Tire Service Trucks, Truck-mounted Cranes, Truck-mounted Stellarc Welders & Truck-mounted Compressed Air Systems ONLY**

Stellar Industries, Inc. (Stellar) warrants products designed and manufactured by Stellar to be free from defects in material and workmanship under proper use and maintenance. Products must be installed and operated in accordance with Stellar's written instructions and stated lifting capacities. The warranty period shall be Twelve (12) month warranty on all Stellar designed and fabricated parts, and Ninety (90) days repair labor.

The warranty period shall begin from the date recorded by Stellar as the in-service date. This date will be derived from the completed warranty registration card. In the event a warranty registration card is not received by Stellar, the factory ship date will be used. Stellar's obligation under this warranty is limited to, and the sole remedy for any such defect shall be, the repair and/or replacement (at Stellar's option) of the part and/or component in question. Stellar after-sales service personnel must be notified by telephone, fax, e-mail, or mail of any warranty-applicable damage within fourteen (14) days of its occurrence. If at all possible, Stellar will ship the replacement part within 24-hours of notification by the most economical, yet expedient, means possible. Expedited freight delivery will be at the expense of the owner.

Warranty claims must be submitted and shall be processed in accordance with Stellar's established warranty claim procedure. Stellar Service personnel must be contacted prior to any warranty claim. A return materials authorization (RMA) account number must be issued to the claiming party prior to the return of any warranty parts. Parts returned without prior authorization will not be recognized for warranty consideration. All damaged parts must be returned to Stellar freight prepaid; freight collect returns will be refused.

Warranty service will be performed by any Stellar new equipment distributor, or by any Stellar-recognized service center authorized to service the type of product involved, or at the Stellar factory. At the time of requesting warranty service, the owner must present evidence of date of delivery of the product. The owner shall be obligated to pay for any overtime labor requested of the servicing company by the owner, any field service call charges, and any towing and/or transportation charges associated with moving the equipment to the designated repair/service provider. All obligations of Stellar and its authorized dealers and service providers shall be voided if someone other than an authorized Stellar dealer provides other than routine maintenance service without prior written approval from Stellar. In the case repair work is performed on the Stellar-manufactured product, original Stellar parts must be used to keep the warranty in force. The warranty may also be voided if the product is modified or altered in any way not approved, in writing, by Stellar engineering.

The owner/operator is responsible for furnishing proof of the date of original purchase of the Stellar product in question. Warranty registration is the ultimate responsibility of the owner and may be accomplished by the completion and return of the Stellar product registration card provided with the product. If the owner is unsure of registration, he is encouraged to contact Stellar at the address below to confirm registration of the product in question. This warranty covers only defective material and workmanship. It does not cover depreciation or damage caused by normal wear and tear, accident, mishap, untrained operators, or improper or unintended use. The owner has the obligation of performing routine care and maintenance duties as stated in Stellar's written instructions, recommendations, and specifications. Any damage resulting from owner/operator failure to perform such duties shall void the coverage of this warranty. The cost of labor and supplies associated with routine maintenance will be paid by the owner.

The only remedies the owner has in connection with the breach or performance of any warranty on the Stellar product specified are those set above. In no event will Stellar, the Stellar distributor/dealer, or any company affiliated with Stellar be liable for business interruptions, costs of delay, or for any special, indirect, incidental, or consequential costs or damages. Such costs may include, but are not limited to, loss of time, loss of revenue, loss of use, wages, salaries, commissions, lodging, meals, towing, hydraulic fluid, or any other incidental cost.

All products purchased by Stellar from outside vendors shall be covered by the warranty offered by that respective manufacturer only. Stellar does not participate in, or obligate itself to, any such warranty.

Hydraulic cylinders used in Stellar products are subject to the same warranty provisions stated above. Should a cylinder defect develop within the above stated warranty period, notify Stellar immediately. Stellar will ship, freight prepaid, by the most effective, expedient, means a new or re-manufactured cylinder of the same size and type. An authorization for return of the original part will be issued at the time the order is placed. The defective cylinder is to be returned to Stellar freight prepaid by the owner. Cylinders returned freight collect will be refused. Should the defective cylinder not be returned within 30 days of shipping the replacement cylinder, the owner is responsible to pay Stellar the full purchase price of the replacement part.

Stellar reserves the right to make changes in design or improvement upon its products without imposing upon itself the same upon its products theretofore manufactured.

This warranty will apply to all Stellar Tire Service Trucks, Truck-mounted Cranes, Truck-mounted Stellarc Welders & Truck-mounted Compressed Air Systems shipped from Stellar's factory after January 1, 1997. The warranty is for the use of the original owner only and is not transferable without prior written permission from Stellar.

THIS WARRANTY IS EXPRESSLY IN LIEU OF ANY OTHER WARRANTIES, EXPRESS OR IMPLIED, INCLUDING ANY WARRANTY OF MERCHANTABILITY OR FITNESS FOR A PARTICULAR PURPOSE. REMEDIES UNDER THIS WARRANTY ARE LIMITED TO THE PROVISION OF MATERIAL AND SERVICES, AS SPECIFIED HEREIN. STELLAR INDUSTRIES, INC. IS NOT RESPONSIBLE FOR INCIDENTAL OR CONSEQUENTIAL DAMAGES.

**Stellar Industries, Inc. • 280 West Third Street • Garner, Iowa 50438 • U.S.A.**

**E-Mail • sales@stellar-industries.com**

**Telephone: 800/321-3741; 641/923-3741 • Fax: 641/923-2812; 641/923-2811**

Revised 10/05/2000